

# LOT 3 WEST VIEW NEON KERRA

# 000068019787

Born: 09-03-2007 Tattoo LE W10  
 Breeder & Owner: DAN & ADRIENNE NELSON  
 W1681 ST RT 86  
 OGEMA WI 54459  
 715-564-2527

SELLING OPEN

## LANG HAVEN LUXURY NEON 00000604188 (007GU00381)

01/08 USDA PTA +1085M -0.14% +24F +202NM\$ 63NM%ile  
 -0.08% +22P +177CM\$ 81% Rel  
 AGA 01/08 PTAT +1.3 77% Rel PTI +129  
 ST SR BD DF RA TW RL FA  
 +1.9 -0.6 +0.0 +2.1 H0.3 +0.2 P1.4 S0.6  
 FU RH RW UC UD TP TL  
 +1.0 +2.9 +1.7 +0.5 S1.2 C1.2 -1.7

## GR-WEST VIEW VILTER HELLEN 000068019786

Appraisal: 79 @ 3-06 (82/77)  
 ST SR BD DF RA TW RL FA FU RH RW UC UD TP TL  
 6 35 30 13 17 35 34 23 24 26 22 39 21 32 19  
 2-01 305D 2X 13336M 4.7% 630F 3.3% 440P DHI  
 3-05 129D 2X 7799M 4.3% 333F 3.2% 247P RIP  
 305D 15036M 683F 524P PROJ ACT

## TROTACRE JAY MR LUXURY-ET 602751 (007GU00339)

01/08 USDA PTA +1005M -0.12% +24F +198NM\$ 63NM%ile  
 -0.03% +28P +191CM\$ 97% Rel  
 AGA 01/08 PTAT +1.0 95% Rel PTI +110

## LANG HAVEN FORTRESS NATALIE 000003046706

01/08 USDA PTA +1417M -0.05% +53F +379NM\$ 99NM%ile  
 -0.07% +34P +358CM\$ 64% Rel  
 2 Rec YDev: +3862M +172F +103P  
 2 App 01/08 PTAT +1.7 61% Rel CPI +197  
 Appraisal: 91 @ 4-00  
 2-08 305D 2X 20130M 4.6% 920F 3.3% 659P DHIA

## LANTZ FARM ENHANCER VILTER-ET 603214 (007GU00358)

01/08 USDA PTA +304M +0.06% +24F -39NM\$ 9NM%ile  
 -0.03% +4P -51CM\$ 91% Rel  
 AGA 01/08 PTAT +1.5 88% Rel PTI +64

## PR-WEST VIEW TRUMPET ELLEN 000068019785

2-06 305D 2X 15753M 4.5% 710F 3.1% 486P DHI  
 3-01 305D 2X 18696M 4.6% 863F 3.0% 552P DHI  
 4-03 305D 2X 14455M 3.2% 468F 3.0% 437P DHI

## THIRD DAM: GT-WEST VIEW LUCAS LISA 000068019783

1-11 348D 2X 17652M 4.7% 830F 3.2% 564P DHI  
 3-00 299D 2X 17209M 4.5% 779F 3.1% 536P DHI  
 4-00 305D 2X 19369M 4.8% 927F 3.1% 592P DHI  
 5-02 305D 2X 19685M 4.1% 814F 2.9% 576P DHI  
 6-06 305D 2X 21672M 4.6% 1002F 2.9% 630P DHI



**GR-West View Vilter Hellen**  
 Dam of Lot 3

# LOT 4 IDLE GOLD BRYANT FERN

# 000068019656

Born: 10-09-2007 Tattoo LE I415  
 Breeder & Owner: NEIL & JANICE JENSEN  
 IDLE GOLD GUERNSEYS  
 1938 25TH ST  
 COMSTOCK WI 54826  
 715-822-5338

SELLING OPEN  
 JOHNES VACCINATE

PA: +360M -0.07% +5F -0.01% +10P +126CM\$ +130NM\$  
 PTAT +0.8 PTI +54  
 ST SR BD DF RA TW RL FA  
 +0.3 +0.3 +0.0 +0.6 H0.8 -0.3 P0.4 0.0  
 FU RH RW UC UD TP TL  
 +0.7 +0.5 +0.4 +0.6 S0.8 C0.2 -0.4

### RIPLEY FARMS HOT SHOT BRYANT-ET 604274 (014GU00291)

01/08 USDA PTA +91M -0.03% -1F +205NM\$ 68NM%ile  
 +0.04% +9P +218CM\$ 82% Rel  
 AGA 01/08 PTAT +0.3 77% Rel PTI +46  
 ST SR BD DF RA TW RL FA  
 -0.3 +0.0 -0.7 -0.2 H1.6 -1.2 P0.4 S0.1  
 FU RH RW UC UD TP TL  
 +0.3 -0.8 -0.8 +0.4 S1.2 C0.3 -1.0

### IDLE GOLD JRZ FLORA 000068008496

01/08 USDA PTA +629M -0.10% +10F +54NM\$ 49NM%ile  
 -0.06% +10P +34CM\$ 34% Rel  
 1 Rec YDev: +3135M -27F +45P



**Idle Gold JRZ Flora**  
 Dam of Lot 4

### MYRTLEDALES MAGIC HOT SHOT-ET 602097 (001GU00381)

01/08 USDA PTA +754M -0.09% +17F +248NM\$ 95NM%ile  
 -0.02% +21P +243CM\$ 98% Rel  
 AGA 01/08 PTAT -0.5 97% Rel PTI +63

### LAESCHLAND PERFECT BLISS-ET 000003024141

01/08 USDA PTA +644M +0.03% +33F +226NM\$ 92NM%ile  
 +0.08% +34P +257CM\$ 80% Rel  
 2 Rec YDev: +4875M +216F +208P  
 3 App 01/08 PTAT +1.2 78% Rel CPI +135  
 Appraisal: 92 @ 4-07  
 3-08 365D 2X 35220M\* 3.9% 1382F\* 3.6% 1253P\* DHIA

### JENS GOLD REGIS Z SPECIAL-ET 604915 (007GU00406)

PA: +678M +0.03% +35F -0.05% +14P +78CM\$ +95N  
 PTAT +1.6 PTI +102

### TWIN L FARMS J FREELA-TW 000068001713

01/08 USDA PTA +176M -0.08% -5F -44NM\$ 21NM%ile  
 -0.03% +0P -55CM\$ 50% Rel  
 2 Rec YDev: -98M -16F +0P  
 2 App 01/08 PTAT +1.0 45% Rel CPI +6  
 Appraisal: 87 @ 3-09 (85/82)

### THIRD DAM: TWIN L FARMS BILLY FOXIE 000003059948

2-01 352D 2X 16330M 4.5% 738F 3.3% 531P 93

### FOURTH DAM: TWIN L FARMS SENOR FROSTY 000003036271

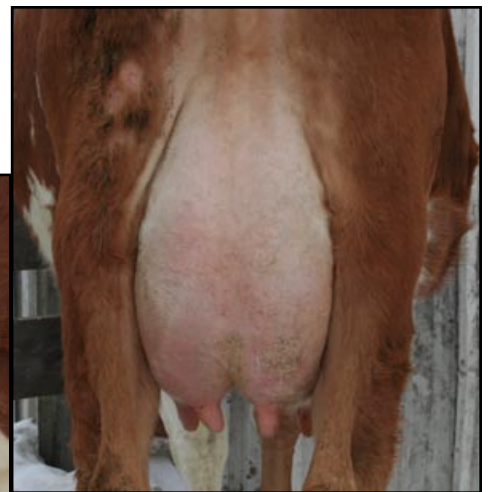
3-10 305D 2X 25470M 3.5% 903F 3.1% 789P DHIR  
 5-02 305D 2X 30530M 3.7% 1130F 2.8% 849P DHIA

### FIFTH DAM: TWIN L FARMS FRENCHY 3006063

Appraisal: 80 @ 4-01  
 2-02 324D 2X 16990M 4.2% 715F 3.1% 523P DHIA

### SIXTH DAM: TWIN L FARMS FLAMIGO 000002977239

Appraisal: 89 @ 4-04  
 2-01 365D 2X 17900M 4.1% 739F 3.3% 596P DHIA



**Jens Gold Grumpy Today**  
 Maternal Sister to Lot 5

## LOT 5 JENS GOLD SAMSON TOOLIGI 000068030103

Born: 09-28-07 Tag # 2228  
Breeder & Owner: JENS GOLD FARMS  
DALE & LYLE JENSEN  
1308 80TH ST  
AMERY WI 54001  
715-268-8711

SELLING OPEN  
JOHNES VACCINATE

### MY DAY BLISS BANGER-ET 00000603872 (007GU00379)

01/08 USDA PTA +673M -0.09% +15F +22NM\$ 18NM%ile  
-0.04% +15P +10CM\$ 94% Rel  
AGA 01/08 PTAT +1.2 93% Rel PTI +83

### SOUTHERN JUSTICE BANGER SAMSON (007GU00420)

PA: +803M -0.09% +22F -0.06% +17P +24CM\$ +42N  
PTAT +1.7 PTI +100  
ST SR BD DF RA TW RL FA  
+1.9 +1.8 +2.6 +1.7 H0.5 +1.9 P0.6 0.0  
FU RH RW UC UD TP TL  
+0.7 +1.5 +1.8 +1.0 D0.4 C1.1 +0.1

### COULEE CREST TILLER SERENA 000068000670

01/08 USDA PTA +933M -0.08% +28F +61NM\$ 51NM%ile  
-0.07% +18P +37CM\$ 52% Rel  
3 Rec YDev: +3120M +75F +63P  
2 App 01/08 PTAT +2.1 51% Rel CPI +114  
ppraisal: 90 @ 3-07 (90/87)  
3-02 365D 2X 25010M 4.1% 1013F 3.4% 854P 91

### JENS GOLD EMAIL TOOME 000003082854

01/08 USDA PTA +423M +0.05% +28F +25NM\$ 40NM%ile  
+0.01% +15P +30CM\$ 38% Rel  
1 Rec YDev: +2002M +96F +80P  
2 App 01/08 PTAT -0.2 43% Rel CPI +46  
Appraisal: 81 @ 3-02 (79/82)  
ST SR BD DF RA TW RL FA FU RH RW UC UD TP TL  
29 36 34 27 32 34 27 22 19 32 45 37 21 34 30  
2-04 365D 2X 20122M 4.5% 927F 3.4% 587P 91

### JENS GOLD OPTION EMAIL 00000604446

PA: +576M +0.06% +34F -0.03% +14P -31CM\$ -22N  
PTAT -0.1 PTI +56

### JENS GOLD SABER TOOTIE 000003070161

01/08 USDA PTA +38M +0.08% +15F +57NM\$ 50NM%ile  
+0.02% +4P +63CM\$ 54% Rel  
2 Rec YDev: +31M +42F +8P  
2 App 01/08 PTAT -0.6 53% Rel CPI +4  
Appraisal: 79 @ 4-05 (79/78)  
2-07 326D 2X 13230M 5.1% 678F 3.5% 469P 99  
3-08 365D 2X 21170M 4.8% 1020F 3.4% 727P DHIA

### THIRD DAM: JENS GOLD TRUMPET TOOT 000003058549

Appraisal: 82 @ 2-09  
2-01 305D 2X 14790M 4.6% 675F 3.4% 500P DHIA

## LOT 6 ROLLING PRAIRIE GOLDEN FANCY 000068018860

Born: 12-10-2007 Tattoo LE H68 RE H68  
Breeder & Owner: ROLLING PRAIRIE FARMS INC  
28112 215TH ST  
GARNAVILLO IA 52049  
563-964-2552

SELLING OPEN  
JOHNES VACCINATE

### MAPLEHURST HOPEFULS GOLDEN 000010032764

01/08 USDA PTA -603M +0.08% -14F +135NM\$ 50NM%ile  
+0.05% -12P +149CM\$ 79% Rel  
AGA 01/08 PTAT +0.0 46% Rel  
ST SR BD DF RA TW RL FA  
-2.2 -1.1 -1.6 -1.3 H1.5 -1.6 S0.3 S0.1  
FU RH RW UC UD TP TL  
+1.4 +1.4 +1.1 -0.2 S2.4 W0.3 -0.7

### ROZELYN PAT MAR P GOLIATH-ET 600974 (007GU00302)

01/08 USDA PTA -195M +0.21% +25F +446NM\$ 99NM%ile  
+0.03% -2P +456CM\$ 99% Rel  
AGA 01/08 PTAT -0.3 98% Rel PTI +74

### MAPLEHURST HOPEFUL 000040199758

APPRAISAL: EX-95 (CAN)

### ROLLING PRAIRIE VERSATILE FATE 000068003955

01/08 USDA PTA -324M +0.06% -5F -56NM\$ 18NM%ile  
-0.01% -12P -61CM\$ 36% Rel  
1 Rec YDev: +34M -24F -11P  
1 App 01/08 PTAT +0.3 37% Rel CPI -6  
Appraisal: 81 @ 2-10 (79/82)  
ST SR BD DF RA TW RL FA FU RH RW UC UD TP TL  
36 24 32 21 23 34 23 35 27 27 20 27 33 32 42  
1-11 297D 2X 15620M 4.0% 628F 3.2% 500P 98

### ROLLING PRAIRIE T VERSATILE 00000604595

PA: +63M +0.03% +8F -0.02% +0P -22CM\$ -18N  
PTAT +1.5 PTI +53  
SIRE: TROTACRE LORAL TILLER-ET

### GR-LAUFENBERG P KING FAITH 000003072677

01/08 USDA PTA -760M +0.14% -11F -71NM\$ 14NM%ile  
+0.02% -22P -69CM\$ 35% Rel  
0 Rec YDev: M F P  
2 App 01/08 PTAT -0.9 50% Rel CPI -58  
Appraisal: 71 @ 6-01  
5-08 365D 2X 22235M 4.7% 1054F 3.4% 747P DHI  
7-08 325D 2X 13990M 5.1% 710F 3.2% 453P 29  
8-09 310D 2X 13990M 4.3% 603F 3.2% 443P 99