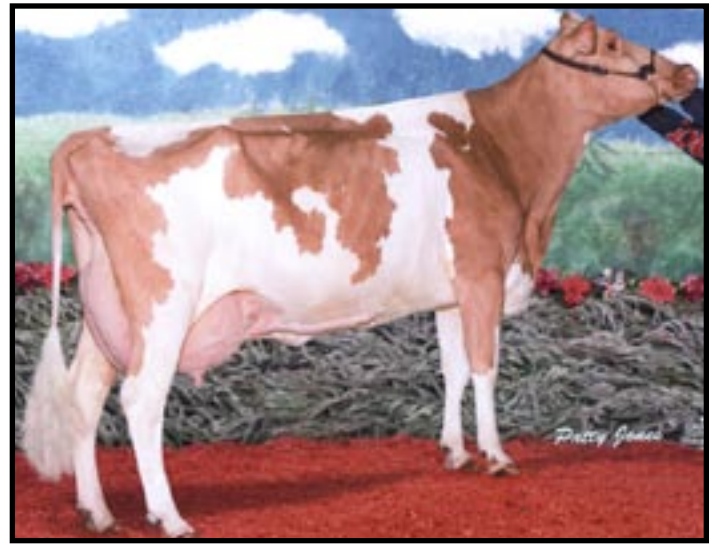




Marodore Jay Lana EX-91

6-06 365D 42,310M 5.3% 2,250F 3.3% 1380P
 Life: 233,960M 5.3% 12,351F 3.6% 8,477P
 Maternal Family Member of Lot 7



Marodore Logic Lainey EX-91

Daughter of Jay Lana
 Maternal Family Member of Lot 7

LOT 7 MARODORE CHILLER LOLLY

000068013988

Born: 09-04-2006 Tattoo LE M95 RE M95

Breeder & Owner: JEREMY KOHLER
 MARODORE FARM
 5745 BURCHEY RD
 BALTIMORE OH 43105
 740-756-4533

SELLING OPEN

PA: +202M +0.04% +16F +0.02% +10P +27CM\$ +20NM\$
 PTAT +0.7 PTI +55
 ST SR BD DF RA TW RL FA
 +1.3 +0.6 +1.3 +1.5 H2.1 +1.4 S0.1 S0.2
 FU RH RW UC UD TP TL
 +1.0 +1.3 +1.1 +0.8 S0.5 C0.9 +0.5

SPRING WALK ICY CHILLER-ET 00000605084 (007GU00410)

PA: +1134M +0.03% +55F +0.01% +38P +180CM\$ +172NM\$
 PTAT +1.4 PTI +157
 ST SR BD DF RA TW RL FA
 +1.9 +0.6 +1.8 +3.0 H1.2 +1.6 S0.1 S0.2
 FU RH RW UC UD TP TL
 -0.2 +2.4 +2.7 +1.0 D0.9 C1.5 -0.1

MARODORE RIKKIS LIFESAVER 000003073366

02/07 USDA PTA -731M +0.05% -24F -133NM\$ 7NM%ile
 +0.03% -19P -126CM\$ 50% Rel
 3 Rec YDev: -2068M -66F -54P
 3 App 02/07 PTAT +0.0 48% Rel CPI -52
 Appraisal: 84 @ 4-11 (85/80)
 ST SR BD DF RA TW RL FA FU RH RW UC UD TP TL
 37 43 43 27 7 44 16 29 41 33 18 31 27 28 36
 2-02 327D 2X 10340M 5.1% 527F 3.5% 360P 95
 3-02 365D 2X 11160M 5.2% 584F 3.4% 383P 93
 5-00 165D 2X 6370M 4.8% 305F 3.6% 227P RIP

THIRD DAM: MARODORE FAYETTE LIFE 000002922656

Appraisal: 85 @ 4-10
 DAUGHTER: MARODORE FRANKS LONI 90 @ 4-05
 3-07 305D 2X 19820M 4.9% 964F 3.5% 685P DHIA

FOURTH DAM: MARODORE SATEL LICORISH 000002766913

Appraisal: 90 @ 9-07
 2497D 113520M 4.8% 5428F 3.6% 4068P LIFE
 DAUGHTERS: MARODORE BIG T LOLLY 90 @ 7-03
 6-02 305D 2X 18770M 4.9% 924F 3.3% 627P DHIA
 MARODORE FAYETTE LIFE 85 @ 4-10
 MARODORE BIG T LOLLY 90 @ 7-03
 6-02 305D 2X 18770M 4.9% 924F 3.3% 627P DHIA

FIFTH DAM: MARODORE CHALLENGER LOLLIPOP 2664382

Appraisal: 85 @ 6-06

ROYAL ACRES ENHANCER JB 00000603423 (001GU00405)

02/07 USDA PTA +870M -0.05% +29F -4NM\$ 13NM%ile
 -0.01% +27P -3CM\$ 92% Rel
 AGA 02/07 PTAT +0.8 90% Rel PTI +76

LANTZ FARM TILLER ICY 000003065440

02/07 USDA PTA +1398M +0.11% +81F +348NM\$ 99NM%ile
 +0.02% +49P +362CM\$ 61% Rel
 3 Rec YDev: +4601M +283F +179P
 3 App 02/07 PTAT +2.0 55% Rel CPI +239
 Appraisal: 91 @ 3-05 (91/88)
 Gold Star Dam - 2005
 3-03 365D 2X 39160M* 5.4% 2117F* 3.5% 1387P* 92

MARODORE LORALS RIKKI 00000603838

PA: +535M -0.04% +17F +0.00% +18P +48CM\$ +45N
 PTAT +0.2 PTI +49
 ST SR BD DF RA TW RL FA
 +0.3 +0.8 +0.6 -0.3 L0.4 +1.1 P0.3 L0.1
 FU RH RW UC UD TP TL
 +0.2 -0.1 +0.2 -0.6 D0.8 W0.6 +0.8

MARODORE IDEALS LIFESAVER 000002977211

02/07 USDA PTA -822M +0.10% -20F -63NM\$ 17NM%ile
 +0.05% -18P -48CM\$ 69% Rel
 5 Rec YDev: -1193M -8F -16P
 2 App 02/07 PTAT -0.5 58% Rel CPI -57
 Appraisal: 87 @ 4-00
 2-01 305D 2X 9810M 5.4% 529F 3.8% 368P DHIA
 3-00 305D 2X 15070M 5.1% 771F 3.7% 557P DHIA
 4-05 305D 2X 17970M 5.4% 969F 3.7% 662P DHIA
 5-07 297D 2X 15790M 5.0% 796F 3.7% 583P DHIA
 6-06 295D 2X 14090M 4.7% 666F 3.6% 512P DHIA
 7-06 305D 2X 14050M 4.9% 695F 3.6% 501P DHIA
 8-08 305D 2X 13620M 4.8% 658F 3.8% 517P DHIA
 9-08 305D 2X 15740M 4.6% 727F 3.7% 586P DHIA
 10-09 305D 2X 12180M 4.4% 535F 3.5% 432P DHIA
 2872D 132,760M 4.9% 6,567F 3.7% 4,891P LIFE
 MARODORE JAYS LICORISH 81 @ 2-04
 MARODORE FANCY LIBERTY 86 @ 3-04
 3-09 365D 2X 19920M 3.9% 772F 3.3% 660P 95
 MARODORE BILLYS LEAH 83 @ 2-11
 2-03 360D 2X 16250M 4.7% 764F 3.3% 544P 95

SIXTH DAM: COGNIACS IDEAL LOTTIE 000002474054

Appraisal: 83 @ 4-07
 3-11 336D 2X 13710M 5.6% 772F DHIA
 DAUGHTER: MARODORE DYNAMIC LILLY 85 @ 7-01
 7-02 365D 2X 17420M 4.9% 850F 3.5% 603P DHIA