



Dix Lee Tyler Izzy
Jr. All-American Fall Calf 2005
3/4 Sister to Lot 14a
LOT 14 EMBRYOS - TILLER X JIZZY

Breeder: TRAVIS DIXON
 15823 MERCHANT DR
 PHILLIPSBURG MO 65722
 417-589-2906 - KEITH

SELLING 4 #1 DIRECT TRANSFER EMBRYOS 10a & 10b AS ONE PACKAGE.
 TWO BY TILLER OUT OF JIZZY & TWO BY MENTOR OUT OF JOKE. BUYER RESPONSIBLE FOR COST AND LIABILITY OF SHIPPING IF REQUIRED.

14a

TROTACRE LORAL TILLER-ET 000000603341 (007GU00360)

08/06 USDA PTA +909M -0.01% +38F +76NM\$ 31NM%ile
 -0.04% +22P +63CM\$ 95% Rel
 AGA 08/06 PTAT +2.9 94% Rel PTI +184
 ST SR BD DF RA TW RL FA
 +4.0 +2.4 +3.0 +3.0 H1.4 +3.3 P0.5 S0.9
 FU RH RW UC UD TP TL
 +1.7 +2.9 +2.9 +1.3 S0.1 C2.0 +0.3

GR-DIX LEE JIFFY JIZZY 000003066339

08/06 USDA PTA -73M +0.07% +9F +25NM\$ 41NM%ile
 +0.06% +8P +48CM\$ 52% Rel
 4 Rec YDev: +706M +57F +50P
 2 App 08/06 PTAT +0.3 45% Rel CPI +39
 Appraisal: 90 @ 3-10 (90/81)
 ST SR BD DF RA TW RL FA FU RH RW UC UD TP TL
 34 25 35 36 20 29 25 32 17 22 21 31 30 20 15
 1-10 365D 2X 18660M 4.6% 866F 3.3% 617P DHIA
 3-03 305D 2X 17950M 4.5% 813F 3.5% 624P 92
 4-09 365D 2X 21110M 4.6% 978F 3.6% 761P DHIA
 6-00 244D 2X 18767M 3.8% 707F 3.4% 642P RIP
 HM JR ALL-AMERICAN WINTER YEARLING 2001

DIX LEE TYLER IZZY
 JR ALL-AMERICAN FALL CALF 2005
 NOM. ALL-AMERICAN FALL CALF 2005
 SUPREME JR CHAMPION HEIFER KENTUCKY KOW-A-RAMA 2006
 RES. JR CHAMPION OZARK EMPIRE FAIR 2006
 JR CHAMPION MISSOURI STATE FAIR 2006
 JR CHAMPION NJS-LOUISVILLE 2005

TROTACRE MERCURY LORAL-ET 602121 (007GU00322)

08/06 USDA PTA -99M -0.01% -7F -181NM\$ 0NM%ile
 -0.01% -5P -185CM\$ 97% Rel
 AGA 08/06 PTAT +1.5 96% Rel PTI +18
 ST SR BD DF RA TW RL FA
 +2.4 +2.3 +2.2 -0.1 L0.1 +2.0 P0.4 S0.3
 FU RH RW UC UD TP TL
 +2.0 +0.6 +0.5 -0.2 S0.6 C0.9 +0.5

GREENWOOD M TILLIE-ET 000003013942

08/06 USDA PTA +864M -0.09% +23F +40NM\$ 46NM%ile
 -0.05% +19P +23CM\$ 72% Rel
 2 Rec YDev: +3951M +116F +103P
 2 App 08/06 PTAT +1.4 64% Rel CPI +114
 Appraisal: 90 @ 3-03
 2-01 365D 2X 31730M* 4.1% 1290F* 3.1% 980P* DHIA

DIX LEE PRINCE JIFFY (PRINCE JAY x FAWNA) 603478

AGA 08/06 PTAT +0.1 57% Rel

PR-DIX LEE JUSTINO BIZZIE 000376009896

08/06 USDA PTA -472M +0.00% -21F -102NM\$ 12NM%ile
 +0.03% -11P -94CM\$ 63% Rel
 4 Rec YDev: -292M -29F +0P
 4 App 08/06 PTAT +0.3 58% Rel CPI -49
 Appraisal: 82 @ 5-06
 2-05 305D 2X 17190M 4.0% 680F 3.5% 609P DHIR
 3-08 305D 2X 19910M 4.0% 794F 3.6% 718P DHIA
 5-00 365D 2X 25600M 3.8% 976F 3.3% 857P DHIA

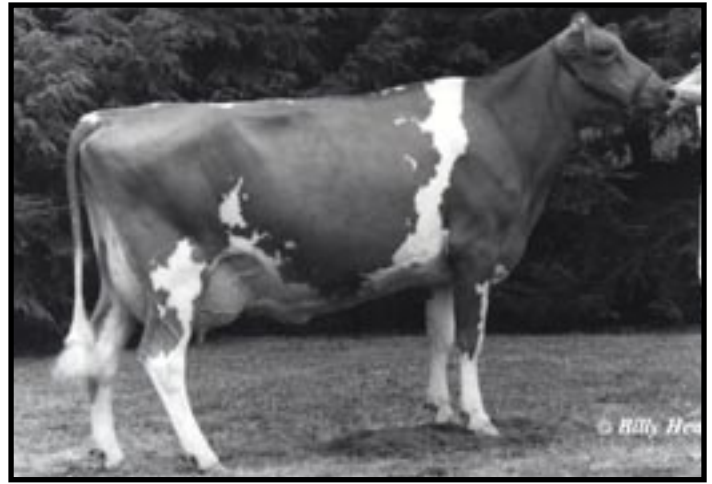
GR-DIX LEE DYNASTY DIZZIE 84 @ 4-09 (85/76)
 3-05 365D 2X 16570M 4.5% 747F 3.6% 591P DHIA

THIRD DAM: GT-DIX LEE THUNDER LIZZIE 000365009844

Appraisal: 94 @ 10-11 (96/89)
 5-10 317D 2X 23330M 4.0% 934F 3.4% 788P 90



Dix Lee Perfecto Fawna EX-93
Res. All-American Aged Cow 1999
Maternal Family Member of Lot 14b



Dix Lee Fayette Jingo EX-90
Grand Champion Maryland Jr. Show 1994
Fifth Dam of Lot 14b

LOT 14b EMBRYOS - MENTOR x JOKE

14b

MAR RAL ROYAL MENTOR 00000604702 (031GU00612)

PA: -169M +0.10% +9F +0.05% +2P +34CM\$ +18NM\$
PTAT +1.4 PTI +56
ST SR BD DF RA TW RL FA
+3.6 +1.3 +1.4 +1.1 L1.6 +1.5 P0.2 S0.5
FU RH RW UC UD TP TL
+1.5 +1.4 +0.9 +0.9 S1.9 C0.8 +0.6

DIX LEE TILLER JOKE 000068001932

08/06 USDA PTA +584M +0.01% +28F +78NM\$ 58NM%ile
+0.00% +18P +78CM\$ 45% Rel
1 Rec YDev: +3093M +115F +102P
2-00 PROJ ME 16922M 764F 587P

RES GRAND CHAMPION MISSOURI STATE FAIR 2006
1ST JR 2-YEAR-OLD MISSOURI STATE FAIR 2006



Dix Lee Jiffy Jipsy
Granddam of Lot 14b

JENSGOLDEN PROKING ROYAL OAK 602216 (007GU00330)

08/06 USDA PTA +607M +0.10% +44F +112NM\$ 31NM%ile
+0.02% +23P +121CM\$ 95% Rel
AGA 08/06 PTAT +2.0 94% Rel PTI +172

RAEMELTON PRIME MAJESTIC 000002982131

08/06 USDA PTA -944M +0.10% -26F -76NM\$ 16NM%ile
+0.07% -19P -54CM\$ 69% Rel
3 Rec YDev: -484M +15F +16P
3 App 08/06 PTAT +0.8 59% Rel CPI -61
Appraisal: 94 @ 10-05
7-09 365D 2X 26670M 3.8% 1010F 3.4% 920P DHIA

TROTACRE LORAL TILLER-ET 00000603341 (007GU00360)

08/06 USDA PTA +909M -0.01% +38F +76NM\$ 31NM%ile
-0.04% +22P +63CM\$ 95% Rel
AGA 08/06 PTAT +2.9 94% Rel PTI +184

DIX LEE JIFFY JIPSY 000003066162

08/06 USDA PTA +49M +0.06% +12F +27NM\$ 42NM%ile
+0.04% +8P +41CM\$ 57% Rel
4 Rec YDev: +1305M +86F +62P
4 App 08/06 PTAT +0.0 53% Rel CPI +36
Appraisal: 90 @ 5-01 (88/90)
2-02 365D 2X 20650M 4.4% 900F 3.3% 682P DHIA
3-08 307D 2X 21870M 4.4% 965F 3.3% 731P 92
4-08 365D 2X 25080M 4.6% 1142F 3.4% 852P DHIA
5-11 268D 2X 17060M 4.1% 704F 3.3% 568P 90
1ST SPRING CALF MID-SOUTH FAIR 2004

THIRD DAM: DIX LEE SMOKEY BEAR JIGGER 000003036554

Appraisal: 84 @ 4-06
6-00 350D 2X 18990M 3.8% 728F 3.3% 618P DHIA

FOURTH DAM: DIX LEE BRETTS BIONIC JINGLE 3004382

Appraisal: 86 @ 5-06

FIFTH DAM: DIX LEE FAYETTE JINGO 000002984299

Appraisal: 90 @ 3-11
4-02 305D 2X 21510M 4.6% 992F 3.6% 768P DHIR
3RD AGED COW NJS-HARRISBURG 1994
GRAND CHAMPION MARYLAND JR SHOW 1994
HER DTR: DIX LEE PERFECTO FAWNA-TW 93 @ 6-07
6-04 305D 2X 21590M 4.1% 880F 3.6% 773P DHIA
NOM ALL-AMERICAN 4-YEAR-OLD 1997
HM ALL-AMERICAN AGED COW 1998
RES ALL-AMERICAN AGED COW 1999
RES JR ALL-AMERICAN AGED COW 2000
HM JR ALL-AMERICAN AGED COW 2001

SIXTH DAM: DIX LEE RON JINGER 000002919129

Appraisal: 84 @ 3-07
2-01 305D 2X 15510M 4.3% 663F 3.4% 525P DHIR

SEVENTH DAM: ROMELLAS PATRICIAN JINGLE 000002860737

Appraisal: 85 @ 5-08
3-06 324D 2X 18480M 4.4% 804F 3.5% 640P DHIA