



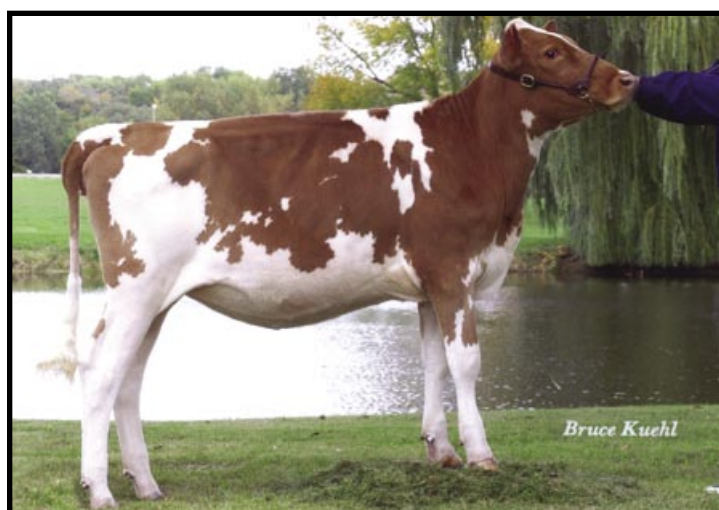
Lang Haven Tiller Nirvana-ET VG-89

Twice All-American ~ Grand Champion NGS-Sacramento 2007
Dam of Lot 2



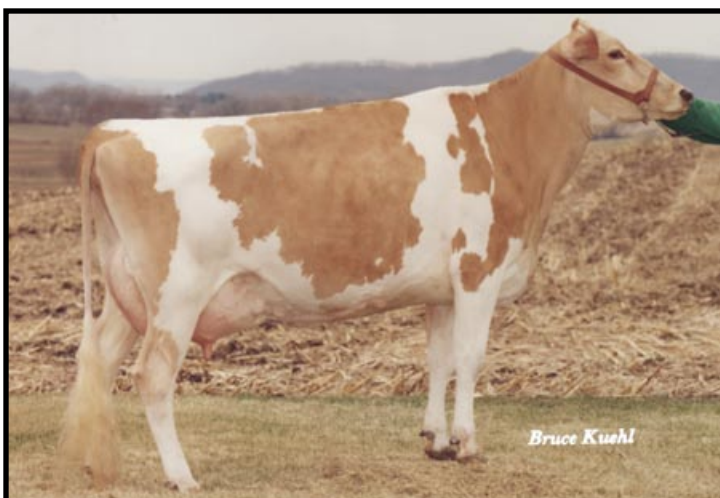
Lang Haven Tiller Nevada-ET

HM All-American Fall Yearling 2006
Full Sister to Dam of Lot 2



Lang Haven Decision Nestle

3rd Winter Calf NGS-Madison 2005
Maternal Family Member of Lot 2



Lang Haven Perfecto Nicole EX-90

5-03 305D 22,490M 4.3% 960F 3.3% 732P
4th Dam of Lot 2



Lang Haven Luxury Noelle VG-87

3-09 365D 29,205M 3.6% 1,039F 3.0% 886P
Maternal Family Member of Lot 2



Lang Haven Option Nadia EX-90

3-04 365D 37,270M 5.9% 2,205F 3.3% 1,212P
 Former #1 CPI Cow
 Granddam of Lot 2

LOT 2 FIRST CHOICE FEMALE FROM LANG HAVEN TILLER NIRVANA-ET

Owner: FRANK & PATTI FARIA
 ESCALON CA 95320
 209-838-2342

IDLE GOLD E CHALLENGE-ET 000000604268 (001GU00418)

08/07 USDA PTA +270M +0.14% +36F +353NM\$ 95NM%ile
 +0.07% +21P +381CM\$ 74% Rel
 AGA 08/07 PTAT +1.3 70% Rel PTI +154
 ST SR BD DF RA TW RL FA
 +0.2 -0.2 -0.3 +0.7 L0.6 -0.4 P1.0 S0.4
 FU RH RW UC UD TP TL
 +2.6 +2.3 +1.3 +0.3 S2.2 C0.5 -0.5

LANG HAVEN TILLER NIRVANA-ET 000068003934

08/07 USDA PTA +1086M +0.03% +54F +141NM\$ 77NM%ile
 -0.04% +29P +131CM\$ 47% Rel
 1 Rec YDev: +2105M +123F +53P
 1 App 08/07 PTAT +2.6 47% Rel CPI +189
 Appraisal: 89 @ 2-05 (88/90)
 ST SR BD DF RA TW RL FA FU RH RW UC UD TP TL
 48 28 30 40 25 36 28 30 25 35 33 30 36 30 22
 2-01 179D 2X 12160M 4.3% 521F 3.1% 374P RIP
 305D 23180M 974F 721P PROJ ME
#7 ON THE AUGUST 2007 CPI LIST
ALL-AMERICAN FALL CALF 2005
ALL-AMERICAN FALL YEARLING 2006
GRAND CHAMPION NGS-SACRAMENTO 2007
JR CHAMPION NGS-SACRAMENTO 2005 & 2006
RES JR CHAMPION NGS-MADISON 2006
HM JR CHAMPION NGS-MADISON 2005

3RD DAM: LANG HAVEN FORTRESS NATALIE 000003046706

Appraisal: 91 @ 4-00
 3-10 305D 2X 19730M 4.9% 972F 3.1% 619P DHIA
 DAM OF LANG HAVEN LUXURY NEON PTI +118

4TH DAM: LANG HAVEN PERFECTO NICOLE 3021234

Appraisal: 90 @ 4-03 Gold Star Dam - 1999
 5-03 305D 2X 22490M 4.3% 960F 3.3% 732P DHIA
 1693D 101,780M 4.2% 4,298F 3.3% 3,317P LIFE
 DAM OF LANG HAVEN HOT SHOT NATASHA 90 @ 4-05 (90/85)
 3-07 305D 2X 26630M 4.6% 1236F 3.3% 889P 94
 LANG HAVEN DECISION NIAGARA-ET 85 @ 4-03 (85/74)
 3-03 365D 2X 32820M* 5.1% 1687F* 3.1% 1026P DHIA



Lang Haven Fortress Natalie EX-91

2-08 305D 20,130M 4.6% 920F 3.3% 659P
 Former #1 CPI Cow
 Third Dam of Lot 2

SELLING FIRST CHOICE FEMALE FROM 2 PREGNANCIES BY

CHALLENGE DUE IN DECEMBER 2007 AND 2 PREGNANCIES BY
SILVERADO DUE THE END OF JANUARY 2008. SELECTION TO
BE MADE BY 3 MONTHS OF AGE.
 TERMS: 50% DUE SALE DAY & 50% DUE AT SELECTION

COULEE CREST R O SILVERADO-ET 604520 (200GU00110)

08/07 USDA PTA +248M +0.12% +31F +62NM\$ 25NM%ile
 -0.02% +5P +56CM\$ 86% Rel
 AGA 08/07 PTAT +2.1 65% Rel PTI +127
 ST SR BD DF RA TW RL FA
 +4.0 +2.8 +2.7 +2.3 L0.2 +2.3 P0.8 S0.7
 FU RH RW UC UD TP TL
 +1.5 +2.3 +2.5 +1.1 S0.3 C0.9 +0.8

TROTACRE LORAL TILLER-ET 000000603341 (007GU00360)

08/07 USDA PTA +731M +0.01% +34F -8NM\$ 20NM%ile
 -0.05% +16P -23CM\$ 97% Rel
 AGA 08/07 PTAT +2.8 96% Rel PTI +132

LANG HAVEN OPTION NADIA-ET 000003073416

08/07 USDA PTA +1418M +0.03% +68F +296NM\$ 97NM%ile
 -0.02% +43P +294CM\$ 58% Rel
 3 Rec YDev: +3701M +184F +123P
 3 App 08/07 PTAT +1.7 55% Rel CPI +200
 Appraisal: 90 @ 3-07 (90/91)
 2-01 305D 2X 25100M 5.9% 1485F* 3.2% 800P 96
 3-04 365D 2X 37270M* 5.9% 2205F* 3.3% 1212P* DHIA
FORMER #1 CPI COW
TARBELL TROPHY WINNER - HIGH FAT RECORD 2005
 DAM OF: LANG HAVEN TILLER NASH-ET @ SELECT SIRES
 LANG HAVEN TILLER NICK-ET @ ACCELERATED
 LANG HAVEN TILLER NEVADA-ET
 HM ALL-AMERICAN FALL YEARLING 2006

5TH DAM: DAIRYMAN FRANK NORMA 000002990719

Appraisal: 87 @ 4-11
 4-10 305D 2X 16820M 3.9% 660F 3.2% 541P DHIA

6TH DAM: DAIRYMAN PATRICIAN NORA 2880402

Appraisal: 90 @ 3-11
 3-02 362D 2X 21250M 4.2% 884F 3.4% 719P DHIA