

INTERNATIONAL GUERNSEY CLASSIC

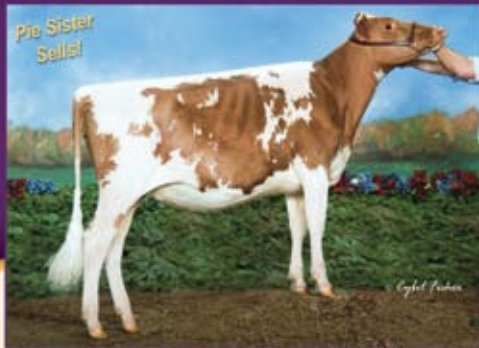
7PM, SEPTEMBER 30 | WORLD DAIRY EXPO, MADISON, WISCONSIN



~SCHEDULE OF EVENTS~

THURSDAY, SEPTEMBER 30: 1PM, NGS-MADISON HEIFERS - 6PM, PRE-SALE SOCIAL - 7PM, INTERNATIONAL GUERNSEY CLASSIC
FRIDAY, OCTOBER 1: 7:30AM, NGS-MADISON COWS

AN OUTSTANDING LINEUP AS HAS BECOME EXPECTED!



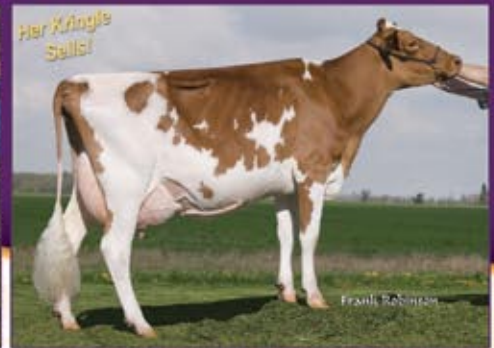
Coulee Crest Chall Jeanie-ET

All-American Fall Calf 2009. Jeanie is a close approximation of the ideal Guernsey heifer. She is from an EX-90 Skipper. Her Pie sister sells along with full sibling embryos! Coulee Crest, WI



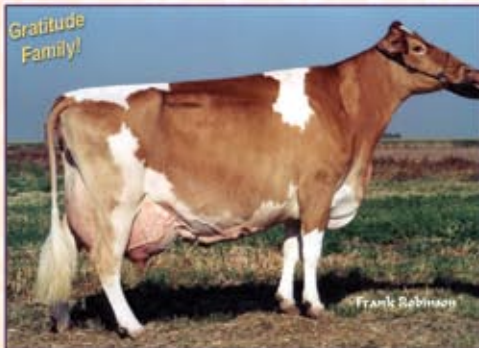
PAFarms Tiller Charger-Tw VG-88

3-06 365D 21,530M 4.3% 918F 3.4% 722P
Charger was Int. Champion at the '08 MN State Fair, is #78 on the CPI List and hails from the maternal line that produced Challenge. Her Aaron sells! Faria Farm, CA



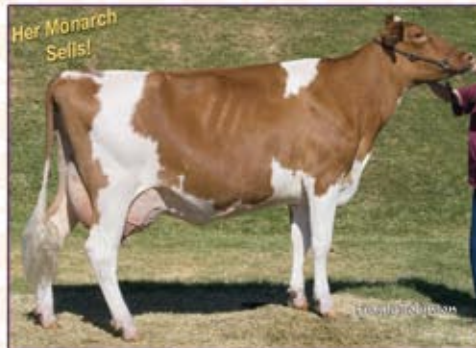
Lang Haven Tiller Nirvana VG-89

2-01 365D 23890M 4.6% 1103F 3.4% 806P
A two-time All-American and a third generation bull mother, Nirvana represents the complete package. Her Feb. '10 Kringle sells! Faria Farm, CA



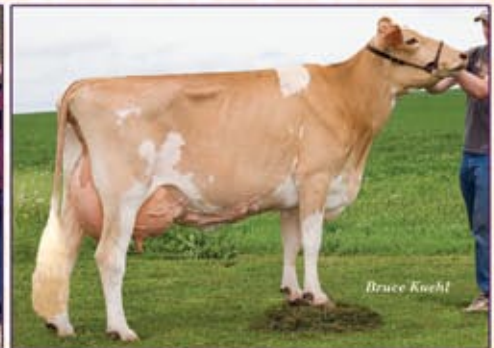
Land of Living P Gratitude EX-94

6-01 365D 29,300M 4.4% 1282F 3.2% 942P
Gratitude has truly done it all. The gold standard for width and power, she is a Res. AA with two popular sons - Gavin and Monte. A June '09 Faria Farms Messenger sells from a VG-86 Luxury from a Regis out of Gratitude with over 25,000M and 1,100F. Faria Farm, CA



Ludlow Acres Tiller Kayla VG-88

3-03 365D 24,960M 4.2% 1057F 3.3% 827P
Res. Grand Champion NGS-Sacramento '07. Kayla is from an EX-90 Goliath, then an EX-91 Frank, both with over 24,000M. Faria Farm, CA



Valley Gem Hulks Faith EX-94

4-07 305D 30370M 3.3% 989F 2.7% 819P
#5 CPI Cow April '10. A Fall Calf sells from her VG Mentor sister. Next dam is VG-88 w/1,200F. Outcross with performance! Valley Gem, WI

Tune in on sale day - you never know what will go right from the show ring to the sale ring!



INTERNATIONAL GUERNSEY CLASSIC

7PM, SEPTEMBER 30 | WORLD DAIRY EXPO, MADISON, WISCONSIN



~SCHEDULE OF EVENTS~

THURSDAY, SEPTEMBER 30: 1PM, NGS-MADISON HEIFERS - 6PM, PRE-SALE SOCIAL - 7PM, INT'L GUERNSEY CLASSIC

FRIDAY, OCTOBER 1: 7:30AM, NGS-MADISON COWS

AN OUTSTANDING LINEUP AS HAS BECOME EXPECTED!



Shady View DF Strawberry EX-93

Life: 103,700M 4.5% 4,679F 3.6% 3,751P

Strawberry, a sister to Magicman's dam, is the 3rd dam of a VG-89 @ 2 yrs. Tiller selling along with her Pie Spring Yearling. What an opportunity. *Estes & Viller, WI*



Lone Acres Tiller Cherry VG-87

Nom. All-American Summer Yearling '04.

Cherry's granddam is EX-91 Perfecto Catie. Cherry's EX-90 Super Lux sells. Wait 'til you see her EX-92 udder! *Four Winds, WI*



Knapps Enhancer Adeline EX-90

4-03 365D 36,100M 5.4% 1943F 3.1% 1115P

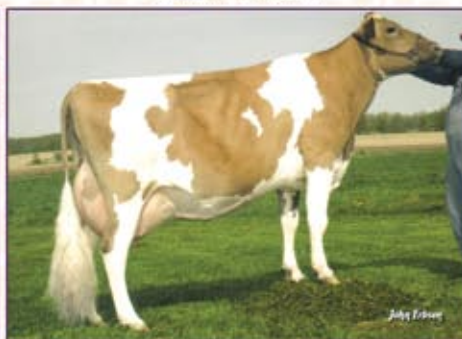
Adeline is a 4th Gen 1,000F cow going back to the great Andora EX-95. Her VG-85 Fayette 4-Year-Old sells just fresh and looks great! *Chupps / Hillpoint, WI*



Misty Meadows Perfecto Icecube EX-94

Life: 127,900M 4.0% 5,136F 3.3% 4,188P

Icecube is a 3-Time Jr. All-American Nominee and her dam is EX. Her VG-85 Spider sells! *Four Winds / Hillpoint, WI*



Pinecrest Acres Charles Lesti EX-90

6-06 365D 18,830M 5.3% 997F 3.7% 694P

Lesti is among the very best in the breed for NMS and PL. Her VG-88 EX MS Natural sells! *Golden I Assoc, IA & WI*



Whirlwind Acres Perfect Tiffany EX-94

5-00 305D 22590M 4.8% 1075F 3.6% 805P

A Glacier sells from an EX-90 dam with 1,600F and 1,100P, then Tiffany's VG-89 Royal Oak with over 1,100F and 800P. *Lantz Farm, WI*



Knapps Ace Tamera EX-90

3-08 365D 24,510M 4.3% 1,044F 3.2% 786P

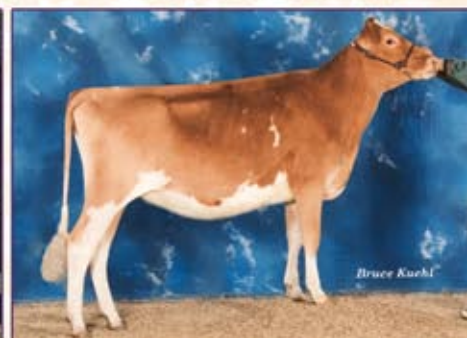
Tamera's EX-93 dam Tami is churning out the AA Nominees. Watch for more sisters on the colored shavings this fall. Adacka embryos sell from Tamera! *Knapps, IA*



Westlynn Tom Dee EX-96

9-08 365D 25,890M 4.5% 1,172F 3.5% 905P

"The" show ring standard. A Family Member will sell! *Four Winds, WI*



Molehill BF Deemand Thunder VG-87

Nom. All-American Summer Yrlg. '08

Her dam is an EX-90 Valiant with two records over 31,000M. Full sibling embryos sell! *David Croshaw, KY*

Tune in on sale day – you never know what will go right from the show ring to the sale ring!

www.usguernsey.com



ph: 614.864.2409