



Monument View Loco Regan EX-94
 Supreme Champion Premier National Junior Show 2010
 Dam of Lot 12

LOT 12 ADACKA X REGAN HEIFER CALF

Breeder & Owner: DUVAL HUNTER R
 3126 CO RT 113
 GREENWICH NY 12834

**SELLING AN UNBORN HEIFER CALF DUE ON OCTOBER 31, 2011
 Sired by Adacka and out of Regan. Terms are 25% due
 at sale time and the balance is due at the time calf is
 picked up. Calf is to be picked up by the time she reach-
 es 3 months of age.**

SNIDERS DEEMAND ADACKA-ET USA000068003052 76GU805

08/11 USDA PTA +274M +0.04% +19F -0.01% +7P
 -0.9DPR -0.1PL -4NM\$ 26NM%ile -8CM\$ 84% Rel
 AGA 08/11 PTAT +1.1 +0.6UDC +2.8FLC 83%Rel PTI +83
 ST SR BD DF RA TW RV RL FA
 +3.6 +2.2 +2.2 +1.8 L0.9 +1.9 H1.3 0.0 S0.8
 FU RH RW UC UD TP TL
 +1.1 +0.5 +0.5 +1.2 S0.2 C0.1 +3.3

FOUR WINDS DEEMAND-ET USA00000604375 7GU389

08/11 USDA PTA -862M +0.20% -5F +0.09% -14P
 -0.8DPR +0.5PL -131NM\$ 13NM%ile -85CM\$ 94% Rel
 AGA 08/11 PTAT +0.6 +0.3UDC +1.2FLC 94%Rel PTI -8

MONUMENT VIEW LOCO REGAN USA000068007962

Appraisal: 94 @ 5-01 (94/94)
 ST SR BD DF RA TW RV RL FA FU RH RW UC UD TP TL
 41 44 42 47 19 33 45 30 29 41 47 43 25 29 25 25
JR ALL-AMERICAN 4-YEAR-OLD 2010
RESERVE ALL-AMERICAN 4-YEAR-OLD 2010
SUPREME CHAMPION NJS-HARRISBURG 2010
GRAND CHAMPION NJS-HARRISBURG & MADISON 2010
GRAND CHAMPION NGS-HARRISBURG 2010
1ST 4-YEAR-OLD NJS-HARRISBURG & MADISON 2010
1ST 4-YEAR-OLD NGS-HARRISBURG 2010
2ND 4-YEAR-OLD NGS-MADISON & LOUISVILLE 2010
GRAND CHAMPION VT STATE FAIR 2010

CEDAR FRINGED ALTANN USA000003045188

08/11 USDA PTA +891M +0.04% +46F -0.08% +15P
 +0.7DPR +2.8PL +302NM\$ 94NM%ile +257CM\$ 84% Rel
 4 Rec YDev: +2398M +129F +54P
 5 App 08/11 PTAT +1.1 +0.9UDR +0.8FLC 83%Rel CPI +125
 Appraisal: 95 @ 6-11 (95/93) Gold Star Dam - 2001
 6-04 365D 2X 31150M 4.8% 1486F 3.0% 941P 94

MONUMENT VIEW L LOCO TILLER USA000003082868

PA: -114M +0.04% +2F +0.00% -4P -161CM\$ -158NM\$
 +0.8PTAT +0.2UDC +1.1FLC -2.2DPR -1.5PL +8PTI

MONUMENT VIEW MMHERALD RACHEL USA000003082869

3RD DAM: MONUMENT VIEW ROSIE LANE USA000003024475

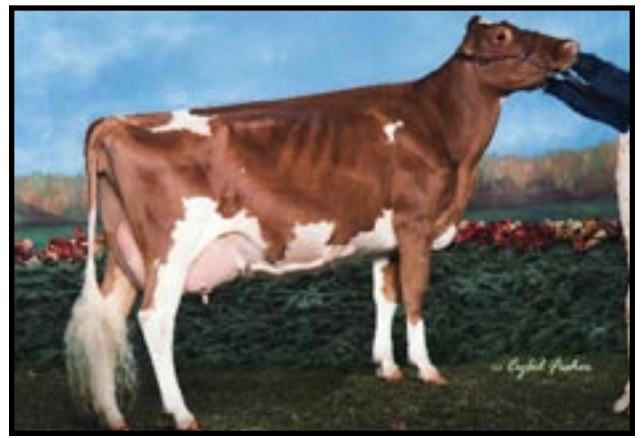
Appraisal: 85 @ 11-06 (80/85)

4TH DAM: MONUMENT VIEW HERALD ROXY USA000002996674

Appraisal: 87 @ 11-01
 6-07 305D 2X 16150M 5.0% 809F 3.3% 541P DHIA
 7-11 305D 2X 16350M 4.9% 802F 3.5% 578P DHIR
 HER DAUGHTER: MONUMENT VIEW HUNTERESS 90 @ 4-06



Sunny Mead Lewis Princess EX-90
Nominated All-American Sr. 3-year-old 2007
Dam of Lot 13



Walnut Corner Valiant Sam Kris EX-91
Reserve Grand Champion IL State Fair 2011
Maternal Sister to Lot 13

LOT 13 WALNUT CORNER CHALLENGE PIXEY USA000068027761

Born: 07-04-2009
Breeder: WALNUT CORNER FARM
BISMARCK IL 61814
Owner: PISKOROWSKI JOSEPH H DDS
26 BARR RD
ITHACA NY 14850

DUE: 10/04/11 TO FOUR WINDS SHOWTIME-ET

PA: +84M +0.08% +17F +0.04% +10P +363CM\$ +335NM\$
+0.5PTAT +0.8UDC +1.8FLC +1.7DPR +3.9PL +93PTI
ST SR BD DF RA TW RV RL FA
-0.8 -1.0 -0.4 +0.8 L0.3 -0.8 H0.8 P0.5 S0.4
FU RH RW UC UD TP TL
+1.5 +1.3 +0.3 -0.2 S1.0 C0.3 +0.1

ROZELYN PATMAR EL GATO USA000000602230 1GU382
08/11 USDA PTA -1027M +0.12% -26F +0.14% -11P
+2.2DPR +5.7PL +299NM\$ 73NM%ile +377CM\$ 80% Rel
AGA 08/11 PTAT -0.5 +0.9UDC -0.1FLC 81%Rel PTI -17

IDLE GOLD E CHALLENGE-ET USA000000604268 1GU418
08/11 USDA PTA -261M +0.20% +22F +0.09% +7P
+1.2DPR +3.2PL +310NM\$ 73NM%ile +369CM\$ 97% Rel
AGA 08/11 PTAT +0.6 +1.0UDC +2.0FLC 96%Rel PTI +91
ST SR BD DF RA TW RV RL FA
-1.3 -1.7 -1.0 +1.0 L0.6 -1.6 H1.0 P0.9 S0.3
FU RH RW UC UD TP TL
+1.9 +2.1 +0.5 -0.2 S1.5 W0.5 +0.2

PAFARMS FORTRESS CASSANDRA USA000003042855
08/11 USDA PTA +1580M -0.12% +47F -0.06% +41P
-0.1DPR +0.0PL +219NM\$ 84NM%ile +198CM\$ 71% Rel
2 Rec YDev: +5366M +186F +152P
3 App 08/11 PTAT +1.0 -0.2UDR +1.7FLC 70%Rel CPI +157
Appraisal: 89 @ 3-07
2-01 365D 2X 30530M*3.9% 1203F 3.4% 1052P* DHIA

SUNNY MEAD LEWIS PRINCESS USA000003083530
08/11 USDA PTA +429M -0.04% +12F -0.01% +12P
+2.1DPR +4.5PL +359NM\$ 97NM%ile +357CM\$ 58% Rel
3 Rec YDev: +1232M +20F +34P
3 App 08/11 PTAT +0.3 +0.6UDR +1.5FLC 59%Rel CPI +90
Appraisal: 90 @ 4-10 (88/91)
ST SR BD DF RA TW RV RL FA FU RH RW UC UD TP TL
37 21 34 50 27 34 38 19 32 34 34 39 26 22 31 26
2-05 292D 2X 15550M 4.2% 656F 3.1% 485P 63
3-05 365D 2X 21020M 4.3% 896F 3.3% 699P DHIA
4-07 305D 2X 20600M 4.3% 876F 3.3% 677P 78
NOM ALL-AMERICAN SR 3-YR-OLD 2007
5th 4-YEAR-OLD NGS-HARRISBURG 2008
2nd SR 3-YR-OLD NGS-HARRISBURG 2007
1st SR 3-YR-OLD IL STATE FAIR OPEN SHOW 2007
RES GRAND CHAMPION IL STATE FAIR OPEN SHOW 2007
WALNUT CORNER VALIANT SAM KRIS 91 @ 4-02 (91/90)
3-11 365D 2X 24910M 4.0% 1006F 3.4% 847P DHIA
NOM. ALL-AMERICAN JUNIOR CALF 2006
NOM. ALL-AMERICAN JR 3-YR-OLD 2009
5th JR 3-YR-OLD NGS-HARRISBURG 2009
2nd JR 3-YR-OLD NGS-MADISON 2009
5th JR 2-YR-OLD NGS-HARRISBURG 2008
5th JR 2-YR-OLD FIGHT BAC FUTURITY 2008
5th JUNIOR CALF NGS-MADISON 2006
5th JUNIOR CALF NGS-HARRISBURG 2006
RESERVE GRAND CHAMPION IL STATE FAIR 2011
GRAND CHAMPION IL STATE FAIR 2009
WALNUT CORNER ADACKA KYM 80 @ 3-07 (79/75)
WALNUT CORNER ADACKA KENDY 84 @ 3-02 (82/87)

TROTACRE ENHANCER LEWIS-ET USA000000603342 7GU366
08/11 USDA PTA +701M -0.04% +24F -0.03% +18P
+0.4DPR +3.1PL +333NM\$ 78NM%ile +324CM\$ 98% Rel
AGA 08/11 PTAT +0.3 +0.3UDC +2.0FLC 97%Rel PTI +103

SUNNY MEAD G PENELOPE USA000003052269
08/11 USDA PTA -541M +0.08% -10F +0.02% -14P
+3.6DPR +5.5PL +279NM\$ 92NM%ile +286CM\$ 53% Rel
3 App 08/11 PTAT -0.2 +0.5UDR +0.0FLC 62%Rel CPI +1
Appraisal: 84 @ 5-04 (84/80)
3-00 322D 2X 12070M 4.6% 561F 3.4% 416P 99
4-00 352D 2X 13830M 4.6% 643F 3.6% 493P DHIA
5-01 299D 2X 13640M 4.7% 637F 3.4% 468P 99
SUNNY MEAD L PRUDY 87 @ 5-01 (87/84)
4-02 365D 2X 20490M 4.5% 912F 3.3% 681P 100
SUNNY MEAD JULES PRIMROSE 86 @ 4-09 (86/85)
4-00 327D 2X 21440M 4.4% 952F 3.0% 649P 100

3RD DAM: SUNNY MEAD H PEPITA USA000002983734
Appraisal: 88 @ 8-11
7-04 305D 2X 17060M 4.5% 762F 3.5% 593P DHIR
2435D 111200M 4.5% 5010F 3.5% 3906P LIFE

4TH DAM: SUNNY MEAD PRISSY USA000002869203
Appraisal: 85 @ 5-10
4-03 305D 2X 16810M 4.6% 770F 3.6% 608P DHIA

5TH DAM: SUNNY MEAD PAULETTE USA000002772587
Appraisal: 84 @ 5-04
5-11 305D 2X 14810M 5.1% 752F 3.8% 564P DHIA

LOT 14 WALNUT CORNER TILLER NASH SPEC USA000068042958

Born: 09-02-2010 Tattoo LE WCF37
Breeder & Owner: WALNUT CORNER FARM - KNIGHT LOGAN
24689 N 1970 E RD
BISMARCK IL 61814

SELLING OPEN

3RD FALL CALF IL STATE FAIR 2011

LANG HAVEN TILLER NASH-ET USA000068003916 7GU414

08/11 USDA PTA +125M -0.06% -5F -0.07% -8P
-1.6DPR -1.5PL -180NM\$ 8NM%ile -228CM\$ 85% Rel
AGA 08/11 PTAT +0.6 +0.3UDC -0.7FLC 82%Rel PTI -34
ST SR BD DF RA TW RV RL FA
-0.2 -0.1 -0.3 +0.1 H1.9 +0.6 S0.5 S0.6 S0.1
FU RH RW UC UD TP TL
+0.4 +0.2 +0.2 -0.1 S1.0 W0.8 -1.4

FISH CREEK VC ETHAN SPECK USA000068024928

TROTACRE LORAL TILLER-ET USA00000603341 7GU360

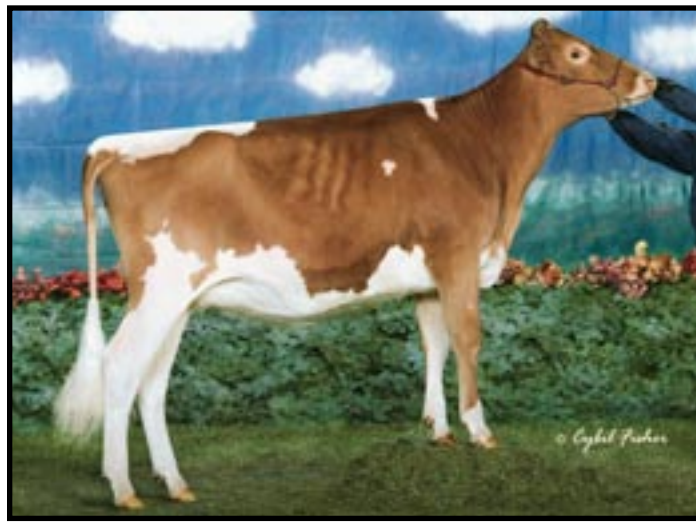
08/11 USDA PTA +421M +0.00% +19F -0.04% +7P
-2.9DPR -2.4PL -135NM\$ 13NM%ile -157CM\$ 98% Rel
AGA 08/11 PTAT +2.0 +1.0UDC +2.0FLC 98%Rel PTI +72

LANG HAVEN OPTION NADIA-ET USA000003073416

08/11 USDA PTA +822M +0.04% +43F -0.01% +25P
-1.2DPR -0.2PL +154NM\$ 72NM%ile +158CM\$ 73% Rel
3 Rec YDev: +2550M +140F +87P
3 App 08/11 PTAT +1.1 +0.3UDR +0.5FLC 69%Rel CPI +118
Appraisal: 90 @ 3-07 (90/91)
3-04 365D 2X 37270M*5.9% 2205F*3.3% 1212P* DHIA

VILLA CREST ETHAN USA000068021157

FISH CREEK POKERS ICE SCARLET USA000068005513



Hershys Spider Chloe Sweeti
 All-American & Jr. All-American Winter Calf 2007
 All-American & Jr. All-American Winter Yearling 2008
 Maternal Family Member of Lot 15

LOT 15 HERSHEY'S DOUGH DONUT USA000068041704

Born: 09-28-2010
 Breeder: HERSHBERGER JONATHAN
 MILLERSBURG OH 44654
 Owner: LIGGETT ANDREW
 367 TROTTER RD
 BESSEMER PA 16112

SELLING OPEN

PA: +409M -0.04% +12F -0.04% +7P +107CM\$ +129NM\$
 +0.2PTAT +0.2UDC -0.8FLC -0.4DPR +1.6PL +32PTI
 ST SR BD DF RA TW RV RL FA
 -0.7 -0.4 -0.3 -0.6 L0.6 -0.8 S0.5 P0.5 L0.3
 FU RH RW UC UD TP TL
 +0.5 +0.5 -0.2 -0.2 S0.5 W0.5 -0.8

SHERMA VICTORY ELLAS ENHANCER USA000000600510 29GU918

08/11 USDA PTA +466M -0.03% +16F -0.07% +2P
 -1.1DPR -1.4PL -20NM\$ 21NM%ile -68CM\$ 97% Rel
 AGA 08/11 PTAT +0.8 +0.8UDC +0.1FLC 97%Rel PTI +26

KNAPPS PERFECTO ALFINA USA000003021761

08/11 USDA PTA -542M +0.06% -14F -0.02% -21P
 +1.0DPR +2.2PL +44NM\$ 44NM%ile +23CM\$ 74% Rel
 4 App 08/11 PTAT +0.2 +0.0UDR +0.9FLC 74%Rel CPI -24
 Appraisal: 92 @ 4-00
 3-03 365D 2X 34130M*4.7% 1614F*3.4% 1176P* DHIA

KNAPPS MR AMERICA-ET USA000000603603 200GU102

08/11 USDA PTA +740M -0.04% +25F -0.07% +12P
 -1.2DPR +1.5PL +184NM\$ 52NM%ile +145CM\$ 88% Rel
 AGA 08/11 PTAT +1.0 +0.9UDC +0.5FLC 89%Rel PTI +85
 ST SR BD DF RA TW RV RL FA
 +1.6 -0.6 -0.4 +1.3 L1.2 -0.5 0.0 P0.9 S0.1
 FU RH RW UC UD TP TL
 +0.7 +1.4 +0.9 +0.7 S0.5 C0.7 -0.9

BAY MEADOW BANGER DALLAS-ET USA000068008568 7GU424

08/11 USDA PTA -498M +0.14% +2F +0.02% -13P
 -0.7DPR +0.6PL -46NM\$ 17NM%ile -39CM\$ 79% Rel
 AGA 08/11 PTAT -0.4 +0.7UDC -2.7FLC 74%Rel PTI -46

HERSHYS LAURA DOUGH USA000068019411

08/11 USDA PTA +77M -0.03% -2F -0.01% +1P
 +0.5DPR +1.6PL +73NM\$ 52NM%ile +68CM\$ 49% Rel
 2 Rec YDev: +562M -6F +18P
 2 App 08/11 PTAT -0.7 -0.6UDR -2.1FLC 48%Rel CPI -26
 Appraisal: 79 @ 3-03 (77/82)
 ST SR BD DF RA TW RV RL FA FU RH RW UC UD TP TL
 22 25 32 18 25 23 31 30 29 25 25 28 23 40 13 30
 1-11 298D 2X 12450M 4.3% 540F 3.4% 424P 96

HERSHYS LEGACY LAURA CINDY USA000068008699

08/11 USDA PTA +441M -0.14% -5F -0.04% +8P
 +1.7DPR +2.2PL +135NM\$ 68NM%ile +115CM\$ 57% Rel
 3 App 08/11 PTAT -1.0 -1.0UDR -1.8FLC 56%Rel CPI -15
 Appraisal: 80 @ 5-06 (80/82)
 2-02 312D 2X 12130M 4.7% 567F 3.4% 409P DHIA
 3-03 365D 2X 19500M 4.3% 840F 3.3% 636P DHIA
 4-05 276D 2X 15100M 4.3% 645F 3.3% 500P 97

3RD DAM: FELLER FARMS LORRY CINDY USA000003067344

Appraisal: 80 @ 4-08 (78/86)
 2-02 278D 2X 11700M 4.6% 537F 3.2% 377P DHIA
 3-01 345D 2X 16400M 4.6% 759F 3.5% 568P 98
 4-02 303D 2X 15660M 4.8% 753F 3.7% 577P 94
 5-02 365D 2X 19120M 5.0% 947F 3.5% 671P 94
 HERSHYS FF CHLOE CINDY 85 @ 5-00 (85/83)
 4-02 365D 2X 17340M 4.8% 828F 3.3% 579P DHIA
 DTR: HERSHYS SPIDER CHLOE SWEETI 84 @ 3-10 (78/84)
 3-03 365D 2X 23250M 4.9% 1139F 3.8% 883P DHIA
 ALL-AMERICAN & JR ALL-AMERICAN WTR YEARLING 2008
 ALL-AMERICAN & JR ALL-AMERICAN WTR CALF 2007
 JUNIOR CHAMPION NJS-LOUISVILLE & HARRISBURG 2007
 JUNIOR CHAMPION NJS-HARRISBURG,LOUISVILLE & MADISON '08
 RES JR CHAMPION 2007 NGS-HARRISBURG
 RES JR CHAMPION 2008 NGS-HARRISBURG

LOT 16 THREE BROOKS GARY JEWELL USA000068043061

Born: 01-30-2011 Tattoo LE 33
Breeder & Owner: HAWKER G EDGAR JR & HAWKER DAVID E
THREE BROOKS FARM
4722 HAWKER RD
FREDERICK MD 21701

SELLING OPEN

COULEE CREST LUXURY SKIPPER-ET USA00000604230 200GU108

08/11 USDA PTA +66M -0.09% -12F -0.02% -1P
-1.0DPR -2.0PL -191NM\$ 8NM%ile -202CM\$ 93% Rel
AGA 08/11 PTAT +0.8 +1.0UDC -1.3FLC 88%Rel PTI -32

PA: +386M +0.05% +26F +0.02% +17P +278CM\$ +257NM\$
+0.9PTAT +1.0UDC +1.1FLC -0.1DPR +2.8PL +107PTI
ST SR BD DF RA TW RV RL FA
+0.6 -0.3 -0.4 +0.8 L1.1 -0.1 H0.3 P0.6 S0.4
FU RH RW UC UD TP TL
+1.3 +1.7 +0.8 -0.1 S1.2 C0.3 -0.6

GOLDEN J OAK GRINCH USA000003070844

08/11 USDA PTA +767M +0.05% +42F +0.00% +25P
-1.8DPR +3.7PL +356NM\$ 97NM%ile +367CM\$ 70% Rel
4 App 08/11 PTAT +2.0 +1.8UDR +2.6FLC 68%Rel CPI +188
Appraisal: 90 @ 6-06 (90/90)
4-03 365D 2X 26240M 4.7% 1223F 3.2% 835P DHIA

GOLDEN J SKIPPER GARY USA000068013855 7GU428

08/11 USDA PTA +593M -0.06% +16F -0.02% +16P
-1.3DPR +1.8PL +154NM\$ 43NM%ile +148CM\$ 58% Rel
AGA 08/11 PTAT +1.6 +1.7UDC +1.2FLC 49%Rel PTI +104
ST SR BD DF RA TW RV RL FA
+2.3 +0.7 +0.6 +1.0 L1.6 +1.0 H0.5 P0.5 S0.3
FU RH RW UC UD TP TL
+1.8 +2.4 +1.3 +0.2 S1.9 C1.3 -0.8

IDLE GOLD E CHALLENGE-ET USA000000604268 1GU418

-08/11 USDA PTA -261M +0.20% +22F +0.09% +7P
+1.2DPR +3.2PL +310NM\$ 73NM%ile +369CM\$ 97% Rel
AGA 08/11 PTAT +0.6 +1.0UDC +2.0FLC 96%Rel PTI +91

THREE BROOKS CHALLENGE CORIE USA000068024203

08/11 USDA PTA +179M +0.15% +35F +0.06% +17P
+1.2DPR +3.8PL +359NM\$ 97NM%ile +407CM\$ 45% Rel
1 Rec YDev: +2467M +193F +95P
2-09 305D 2X 16269M 4.7% 767F 3.2% 514P PROJ ME

THREE BROOKS FRITZ CADI USA000068003579

08/11 USDA PTA +236M +0.09% +26F +0.05% +16P
+1.9DPR +2.8PL +276NM\$ 91NM%ile +313CM\$ 53% Rel
2 App 08/11 PTAT -0.5 -0.6UDR -0.1FLC 45%Rel CPI +63
Appraisal: 82 @ 3-10 (80/86)
2-05 365D 2X 11870M 5.1% 607F 3.8% 447P 100
3-06 365D 2X 24630M 5.4% 1329F 3.7% 910P 72
4-08 316D 2X 20700M 5.4% 1122F 3.6% 735P 95

3RD DAM: THREE BROOKS HOT SHOT CODY USA000003079028

Appraisal: 82 @ 7-09 (78/86)
2-05 365D 2X 13280M 5.1% 676F 3.9% 517P 99
4-01 365D 2X 16120M 4.8% 771F 3.6% 586P 100
5-02 365D 2X 11240M 4.7% 525F 3.7% 415P 100
6-06 282D 2X 15960M 5.0% 801F 3.5% 553P 92
7-05 334D 2X 16580M 4.4% 722F 3.5% 576P 95

LOT 17 DEN BE BRT MINNIE-TW**USA000068043460**

Born: 03-01-2011 Tattoo LE B165 RE B165

Breeder & Owner: MUSSER BETSY A

DEN BE FARM

407 HOPE RD

ENON VALLEY PA 16120

SELLING OPEN

MAPLEHURST BNEON BRIGHT CAN000009594177**DEN BE HAWK MACY USA000068025075**

08/11 USDA PTA +335M +0.15% +40F +0.02% +15P
 -0.2DPR +0.1PL +141NM\$ 69NM%ile +163CM\$ 43% Rel
 1 Rec YDev: +1780M +208F +59P
 1 App 08/11 PTAT +0.7 +0.0UDR +1.6FLC 43%Rel CPI +107
 Appraisal: 85 @ 2-07 (86/84)
 ST SR BD DF RA TW RV RL FA FU RH RW UC UD TP TL
 34 33 26 18 17 25 32 17 22 27 32 29 23 35 34 29
 2-03 305D 2X 17768M 5.4% 955F 3.3% 590P PROJECT

LANG HAVEN LUXURY NEON USA000000604188 7GU381

08/11 USDA PTA +660M -0.25% -16F -0.12% +0P
 +1.5DPR +1.3PL -4NM\$ 26NM%ile -83CM\$ 95% Rel
 AGA 08/11 PTAT +0.5 +0.5UDC +0.8FLC 93%Rel PTI -10

MAPLEHURST WARDEN BIANCA CAN000010000677

Appraisal: 87 @ 3-11 (86/84)
 LIFE: 185,953M 4.5% 8,386F 3.6% 6,665P CAN

JENS GOLD G HAWK-TW USA000000604445 7GU391

08/11 USDA PTA +385M +0.08% +32F +0.04% +20P
 -0.9DPR -2.3PL +21NM\$ 34NM%ile +55CM\$ 92% Rel
 AGA 08/11 PTAT +1.1 -0.1UDC +1.0FLC 86%Rel PTI +95

GR-DEN BE VERN MADISON USA000068004939

08/11 USDA PTA +147M +0.11% +26F +0.01% +7P
 +1.7DPR +0.5PL +116NM\$ 63NM%ile +127CM\$ 49% Rel
 4 Rec YDev: +595M +66F +27P
 3 App 08/11 PTAT -0.1 -0.7UDR +0.4FLC 45%Rel CPI +48
 Appraisal: 86 @ 4-08 (85/81)
 2-02 262D 2X 13100M 4.4% 579F 3.6% 466P 91
 3-03 288D 2X 17940M 5.0% 899F 3.4% 603P DHIA
 4-03 279D 2X 16500M 4.8% 795F 3.4% 556P 95
 5-02 336D 2X 19720M 4.9% 963F 3.4% 663P 97



Sniders Goldust Barclee EX-91

Past Grand Champion PA Farm Show
3rd Dam of Lot 18

LOT 18 SNIDERS ARRINGTON BUXBY USA000068045150

Born: 06-19-2011 Tattoo LE S349 RE S349
Breeder & Owner: GABLE KENDY BETH
2563 BRUMBAUGH RD
NEW ENTERPRISE PA 16664

PA: -193M +0.06% +2F +0.02% -3P -6CM\$ -18NM\$
+0.4PTAT +0.5UDC +0.8FLC +0.0DPR +0.1PL +17PTI
ST SR BD DF RA TW RV RL FA
+1.4 +1.0 +0.5 -0.1 H0.4 +0.8 H0.2 S0.2 S0.5
FU RH RW UC UD TP TL
+1.0 +0.4 +0.1 -0.2 S0.8 C0.1 +0.2

SNIDERS MONEY ARRINGTON USA000068025575

PA: -531M +0.11% -5F +0.05% -10P +62CM\$ +37NM\$
+0.1PTAT +0.7UDC -0.3FLC +0.7DPR +1.9PL -12PTI
ST SR BD DF RA TW RV RL FA
-0.5 +0.0 -1.0 -1.7 H1.1 -0.4 S0.3 S0.3 S0.2
FU RH RW UC UD TP TL
+1.8 +0.1 -1.2 -1.1 S2.0 C0.5 -1.4

SNIDERS BRANDO BARBIE USA000068025891

Appraisal: 81 @ 2-02 (83/83)
ST SR BD DF RA TW RV RL FA FU RH RW UC UD TP TL
42 16 17 33 38 33 36 17 27 18 35 26 19 35 22 27
2-01 305D 2X 19060M 3.6% 684F 3.0% 575P PROJ ME

3RD DAM: SNIDERS GOLDUST BARCLEE USA000068003067

Appraisal: 91 @ 4-09 (91/89)
2-04 279D 2X 15480M 4.7% 720F 3.3% 511P 94
3-03 328D 2X 22370M 4.8% 1080F 3.4% 764P 98
4-03 365D 2X 23320M 4.9% 1146F 3.5% 818P DHIA
5-11 365D 2X 22130M 4.8% 1053F 3.1% 684P DHIA

4TH DAM: SNIDERS LOTTO BLANK-TW USA000003057462

Appraisal: 81 @ 5-07 (79/83)
4-01 332D 2X 19160M 4.3% 819F 3.2% 618P 95
2984D 148770M 4.2% 6188F 3.3% 4908P LIFE

5TH DAM: SNIDERS BIONIC BARBIE USA000002995043

Appraisal: 86 @ 5-04
3-10 303D 2X 18430M 4.0% 746F 3.3% 606P DHIR

6TH DAM: SNIDERS ACTORS BASHFUL USA000002852634

Appraisal: 80 @ 3-04
4032D 152690M 4.5% 6856F 3.5% 5272P LIFE



Sniders Fayette Brett EX-92

Unanimous Jr AA 4-year-old 1995
Maternal Family Member to Lot 18

SELLING OPEN

CHUPPS FARM BOSSMAN MONEY-ET USA000000604440

08/11 USDA PTA -600M +0.06% -16F +0.05% -11P
+0.9DPR -1.7PL -178NM\$ 8NM%ile -151CM\$ 68% Rel
AGA 08/11 PTAT -0.1 +0.0UDC -1.5FLC 69%Rel PTI -64

SNIDERS OMNI AEROLIN USA000003069219

08/11 USDA PTA -462M +0.16% +6F +0.04% -8P
+0.4DPR +5.4PL +252NM\$ 89NM%ile +275CM\$ 59% Rel
4 Rec YDev: -1510M +1F -32P
4 App 08/11 PTAT +0.3 +1.4UDR +1.0FLC 58%Rel CPI +43
Appraisal: 93 @ 8-06 (93/89)
8-03 365D 2X 24440M 4.4% 1076F 3.3% 805P DHIA

SNIDERS ADACKA BRANDO USA000068013014 120GU1281

SNIDERS PISTOL BLINK USA000068014202

08/11 USDA PTA +284M +0.04% +20F -0.02% +6P
-0.9DPR -4.0PL -139NM\$ 9NM%ile -148CM\$ 42% Rel
1 Rec YDev: +2222M +111F +72P
1 App 08/11 PTAT +0.4 -0.6UDR +2.1FLC 42%Rel CPI +45
Appraisal: 77 @ 4-08 (75/78)
2-05 365D 2X 20210M 4.5% 908F 3.3% 657P DHIA

7TH DAM: SNIDERS FAYVORS BEAUTY USA000002793957

Appraisal: 90 @ 5-04
3246D 112640M 5.0% 5669F 3.4% 3851P LIFE
DTRS: SNIDERS CHOICE BEDFORD 90 @ 3-06
4-03 365D 2X 20750M 4.9% 1010F 3.5% 718P DHIA
SNIDERS FAYETTE BRETT 92 @ 7-06
5-02 350D 2X 19390M 5.1% 993F 3.8% 732P DHIA
UNANIMOUS JR AA 4-YEAR-OLD 1995
JR AA JUNIOR YEARLING 1992
ALL AMERICAN JUNIOR YEARLING 1992
RES JR AA JR 3-YEAR-OLD 1994
AA NOMINEE 4-YEAR-OLD 1995
HM AA JR 3-YEAR-OLD 1994

8TH DAM: KATHY C BEAUTIFUL USA000002554679

Appraisal: 82 @ 6-04
7-09 305D 2X 14920M 5.1% 759F DHIR