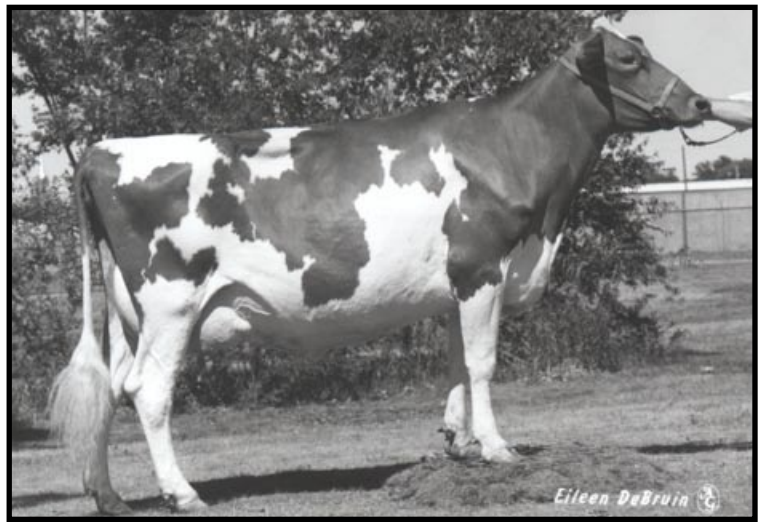


Kenmon Jeeps Joki EX-90

3-11 365D 24,090M 5.5% 1,318F 3.8% 916P
Maternal Sister to Fourth Dam of Lot 18



Kenmon Janes Jenny EX-92

2-07 365D 19,780M 4.6% 905F 3.9% 762P
Maternal Sister to Fifth Dam of Lot 18

LOT 18 IDLE NEER POKER JOKER

000068001805

Born: 10-13-2003 Tattoo LE S270 RE S270
Breeder: DONALD SYWASSINK
LETT S IA
Owner: JAMES & DORIS BOLLECH
ATHENS WI

FRESH: 05-12-06
BRED: 02-12-07 DUE: 11-24-07
COULEE CREST LUXURY SKIPPER-ET 604230 200GU00108

1 App 02/07 PTAT -0.1 44% Rel
Appraisal: 83 @ 2-10 (86/77)
ST SR BD DF RA TW RL FA FU RH RW UC UD TP TL
25 19 13 36 34 28 28 19 31 34 32 34 37 23 35
2-03 361D 2X 13980M 4.2% 592F 3.3% 465P OS

NELLS GLOW ADMIRAL MAGIC 000000598858 (001GU00305)
02/07 USDA PTA +517M -0.07% +11F +11NM\$ 13NM%ile
-0.03% +11P +0CM\$ 99% Rel
AGA 02/07 PTAT +0.3 99% Rel PTI +20

MYOWN MAGIC POKER 000000602889 (001GU00400)
02/07 USDA PTA +653M -0.03% +24F +110NM\$ 30NM%ile
-0.01% +19P +107CM\$ 97% Rel
AGA 02/07 PTAT -0.4 97% Rel PTI +41
ST SR BD DF RA TW RL FA
+2.1 +0.0 -1.1 +1.7 L1.8 +1.2 S0.3 L0.3
FU RH RW UC UD TP TL
-2.2 +0.2 +1.2 +0.2 D1.3 W1.7 -0.3

MYOWN ENHANCER POLKA 000003000603
02/07 USDA PTA +563M -0.03% +20F +80NM\$ 56NM%ile
-0.02% +14P +73CM\$ 69% Rel
3 Rec YDev: +2066M +67F +59P
3 App 02/07 PTAT +0.3 63% Rel CPI +42
Appraisal: 87 @ 5-10
2-01 365D 2X 23910M 4.2% 1009F 3.4% 820P DHIA

IDLE NEER BANGER JO 000003073964
02/07 USDA PTA +209M -0.04% +2F +25NM\$ 39NM%ile
+0.01% +8P +28CM\$ 46% Rel
1 Rec YDev: +156M -14F +4P
1 App 02/07 PTAT +0.2 47% Rel CPI +26
Appraisal: 71 @ 2-07 (68/84)
ST SR BD DF RA TW RL FA FU RH RW UC UD TP TL
24 27 28 18 25 29 23 28 27 21 23 20 32 5 33

MY DAY BLISS BANGER-ET 000000603872 (007GU00379)
02/07 USDA PTA +1230M -0.12% +32F +141NM\$ 34NM%ile
-0.04% +33P +130CM\$ 88% Rel
AGA 02/07 PTAT +1.5 88% Rel PTI +143

THIRD DAM: TAG LANE SHARP JESSIE 000003033063
Appraisal: 90 @ 4-00

IDLE NEER WHITESTAR JOKI 000003047351
02/07 USDA PTA -646M +0.05% -20F -15NM\$ 28NM%ile
+0.07% -10P +6CM\$ 63% Rel
5 Rec YDev: -943M -18F -6P
3 App 02/07 PTAT +0.2 52% Rel CPI -20
Appraisal: 88 @ 4-10
2-04 302D 2X 12750M 4.8% 614F 3.8% 481P DHIA
3-04 305D 2X 16870M 4.6% 771F 3.6% 600P DHIA
4-06 350D 2X 15970M 4.8% 767F 3.5% 562P DHIA
5-08 322D 2X 13240M 4.9% 654F 3.7% 494P 98

FOURTH DAM: TAG LANE FAYETTE JAMIE-TW 002933887
Appraisal: 84 @ 3-03
8-05 365D 2X 17570M 4.3% 751F 3.7% 652P DHIA
2451D 105,440M 4.5% 4,753F 3.7% 3,940P LIFE

IDLE NEER HOTSHOT JUBILEE
5-00 326D 2X 14290M 4.4% 635F 3.5% 501P 94

FIFTH DAM: KENMON JANES JEEP 000002798472
Appraisal: 90 @ 7-08
7-07 365D 2X 20570M 5.0% 1028F 3.9% 803P DHIA
HER DTR: KENMON JEEPS JOKI 92 @ 5-04
3-11 365D 2X 24090M 5.5% 1318F* 3.8% 916P* DHIA
HER SISTER: KENMON JANES JENNY 92 @ 4-06
2-07 365D 2X 19780M 4.6% 905F 3.9% 762P* DHIA

LOT 19 JARIS HILLS NATURAL SANDY**000068013115**

Born: 05-14-2006 Tattoo LE 27JH

SELLING OPEN

Breeder & Owner: JAMES & DORIS BOLLECH
ATHENS WI

PA: +469M +0.09% +36F +0.01% +17P +277CM\$ +272NM\$
 PTAT +0.4 PTI +109
 ST SR BD DF RA TW RL FA
 +1.1 +0.7 +0.8 +0.7 H0.4 -0.1 P0.2 S0.2
 FU RH RW UC UD TP TL
 +0.2 +0.4 +0.5 +0.1 S0.3 C0.1 -0.4

LANG HAVEN DECISIONS NATURAL 000000604878 (007GU00412)

PA: +1254M +0.01% +58F -0.03% +37P +336CM\$ +340NM\$
 PTAT +0.7 PTI +174
 ST SR BD DF RA TW RL FA
 +1.4 +1.3 +1.3 +1.0 H0.3 +0.8 P0.4 S0.1
 FU RH RW UC UD TP TL
 +0.2 +1.0 +1.5 +0.2 D0.2 C0.1 -0.3

JARIS HILLS GOLIATH SPECIAL 000003062529

02/07 USDA PTA -316M +0.17% +14F +204NM\$ 88NM%ile
 +0.04% -3P +218CM\$ 56% Rel
 4 Rec YDev: -212M +57F +13P
 3 App 02/07 PTAT +0.1 54% Rel CPI +44
 Appraisal: 86 @ 5-05 (86/84)
 ST SR BD DF RA TW RL FA FU RH RW UC UD TP TL
 28 27 31 43 14 15 15 27 18 16 34 27 20 26 13
 2-00 288D 2X 10330M 5.2% 539F 3.4% 353P DHIA
 2-11 305D 2X 9690M 5.4% 527F 3.6% 345P 86
 4-02 325D 2X 13460M 5.1% 685F 3.3% 441P 74
 5-02 305D 2X 13820M 5.3% 732F 3.6% 495P 74
 6-07 305D 2X 13380M 4.8% 639F 3.5% 462P 75

LOT 20 JARIS HILLS GOLIATH SPECIAL**000003062529**

Born: 09-23-1999 Tattoo LE J31H

FRESH: 05-14-06

Breeder & Owner: JAMES & DORIS BOLLECH
ATHENS WI

BRED: 10-09-06 DUE: 07-21-07

COULEE CREST LUXURY SKIPPER-ET 604230 200GU00108

DHI Herd # 35371413 Cow Control 00271

02/07 USDA PTA -316M +0.17% +14F +204NM\$ 88NM%ile
 +0.04% -3P +218CM\$ 56% Rel
 4 Rec YDev: -212M +57F +13P
 3 App 02/07 PTAT +0.1 54% Rel CPI +44
 Appraisal: 86 @ 5-05 (86/84)
 ST SR BD DF RA TW RL FA FU RH RW UC UD TP TL
 28 27 31 43 14 15 15 27 18 16 34 27 20 26 13
 2-00 288D 2X 10330M 5.2% 539F 3.4% 353P DHIA
 2-11 305D 2X 9690M 5.4% 527F 3.6% 345P 86
 4-02 325D 2X 13460M 5.1% 685F 3.3% 441P 74
 5-02 305D 2X 13820M 5.3% 732F 3.6% 495P 74
 6-07 352D 2X 14507M 4.9% 708F 3.5% 511P 75

ROZELYN PAT MAR P GOLIATH-ET 00000600974 (007GU00302)

02/07 USDA PTA -245M +0.22% +26F +440NM\$ 99NM%ile
 +0.04% -2P +453CM\$ 99% Rel
 AGA 02/07 PTAT -0.3 98% Rel PTI +76
 ST SR BD DF RA TW RL FA
 -1.6 -0.5 -0.9 -1.0 H2.0 -1.8 S0.1 S0.2
 FU RH RW UC UD TP TL
 +1.3 -1.0 -1.6 -0.6 S2.0 C1.0 -1.8

JARIS HILLS MAGIC SHAWNA 000003013820

02/07 USDA PTA -399M +0.05% -9F -39NM\$ 22NM%ile
 +0.03% -8P -29CM\$ 61% Rel
 5 Rec YDev: -499M +4F -3P
 4 App 02/07 PTAT -0.1 57% Rel CPI -23
 Appraisal: 90 @ 6-03
 ST SR BD DF RA TW RL FA FU RH RW UC UD TP TL
 35 39 41 43 18 33 29 16 38 30 27 40 26 31 31
 2-03 305D 2X 9340M 4.9% 455F 3.5% 324P DHIA
 3-05 305D 2X 11100M 4.8% 528F 3.4% 382P DHIA
 4-07 283D 2X 11760M 4.5% 529F 3.5% 410P DHIR
 5-06 305D 2X 15850M 4.4% 696F 3.5% 551P DHIR
 6-10 292D 2X 13120M 4.7% 619F 3.7% 483P DHIA
 7-10 305D 2X 17680M 4.3% 758F 3.1% 552P DHIA

LANG HAVEN LORRY DECISION 000000603947 (001GU00413)

02/07 USDA PTA +984M +0.03% +49F +192NM\$ 56NM%ile
 -0.03% +27P +185CM\$ 77% Rel
 AGA 02/07 PTAT +0.3 71% Rel PTI +123

LANG HAVEN HOT SHOT NATASHA 000003064890

02/07 USDA PTA +1523M -0.01% +66F +487NM\$ 99NM%ile
 -0.02% +46P +486CM\$ 58% Rel
 3 Rec YDev: +4564M +216F +148P
 2 App 02/07 PTAT +1.1 53% Rel CPI +221
 Appraisal: 90 @ 4-05 (90/85)
 3-07 305D 2X 26630M 4.6% 1236F 3.3% 889P 94

ROZELYN PAT MAR P GOLIATH-ET 00000600974 (007GU00302)

02/07 USDA PTA -245M +0.22% +26F +440NM\$ 99NM%ile
 +0.04% -2P +453CM\$ 99% Rel
 AGA 02/07 PTAT -0.3 98% Rel PTI +76

JARIS HILLS MAGIC SHAWNA 000003013820

02/07 USDA PTA -399M +0.05% -9F -39NM\$ 22NM%ile
 +0.03% -8P -29CM\$ 61% Rel
 5 Rec YDev: -499M +4F -3P
 4 App 02/07 PTAT -0.1 57% Rel CPI -23
 Appraisal: 90 @ 6-03
 2-03 305D 2X 9340M 4.9% 455F 3.5% 324P DHIA
 3-05 305D 2X 11100M 4.8% 528F 3.4% 382P DHIA
 4-07 283D 2X 11760M 4.5% 529F 3.5% 410P DHIR
 5-06 305D 2X 15850M 4.4% 696F 3.5% 551P DHIR
 6-10 292D 2X 13120M 4.7% 619F 3.7% 483P DHIA
 7-10 305D 2X 17680M 4.3% 758F 3.1% 552P DHIA

ROZELYN PATS PRINCE 000000595650

02/07 USDA PTA -174M +0.11% +10F +263NM\$ 91NM%ile
 +0.08% +8P +292CM\$ 88% Rel
 AGA 02/07 PTAT -1.3 83% Rel PTI +24

ROZELYN HONORS GLORIA 000002902962

02/07 USDA PTA -283M +0.29% +35F +377NM\$ 99NM%ile
 +0.09% +6P +409CM\$ 79% Rel
 4 Rec YDev: +975M +144F +68P
 3 App 02/07 PTAT +0.3 69% Rel CPI +114
 Appraisal: 92 @ 5-07 Gold Star Dam - 1990
 4-09 365D 2X 30070M* 5.4% 1611F* 3.8% 1149P* DHIA

NELLS GLOW ADMIRAL MAGIC 000000598858 (001GU00305)

02/07 USDA PTA +517M -0.07% +11F +11NM\$ 13NM%ile
 -0.03% +11P +0CM\$ 99% Rel
 AGA 02/07 PTAT +0.3 99% Rel PTI +20

SUNNY MEAD SPARKLE 000002952963

02/07 USDA PTA -1375M +0.09% -48F -193NM\$ 3NM%ile
 +0.09% -31P -169CM\$ 60% Rel
 3 Rec YDev: -2851M -87F -57P
 2 App 02/07 PTAT -1.0 52% Rel CPI -117
 Appraisal: 82 @ 5-01
 2-07 356D 2X 10420M 4.9% 507F 3.7% 381P DHIA
 3-09 307D 2X 9420M 4.9% 458F 3.9% 363P DHIA
 4-09 296D 2X 11530M 4.7% 538F 3.6% 419P DHIR

LOT 21 JARIS HILLS AMEN FRAN**000003074017**

Born: 07-27-2001 Tattoo LE J51H
 Breeder & Owner: JAMES & DORIS BOLLECH
 ATHENS WI

FRESH: 04-15-07
 SELLING OPEN

DHI Herd # 35371413 Cow Control 00295
 02/07 USDA PTA +34M +0.03% +6F -10NM\$ 29NM%ile
 +0.04% +7P +3CM\$ 53% Rel
 3 Rec YDev: +562M +40F +37P
 3 App 02/07 PTAT -0.2 53% Rel CPI +5
 Appraisal: 85 @ 4-04 (83/81)
 ST SR BD DF RA TW RL FA FU RH RW UC UD TP TL
 26 32 30 22 20 25 25 22 13 33 23 30 21 11 34
 2-04 205D 2X 10224M 4.7% 483F 3.4% 349P DHI
 3-03 297D 2X 12760M 4.7% 595F 3.3% 421P 74
 4-03 305D 2X 13660M 4.5% 616F 3.4% 463P 74

BLACKWATER LORD AMEN 000000602825 (009GU00141)

02/07 USDA PTA +457M +0.03% +26F +21NM\$ 13NM%ile
 +0.05% +23P +41CM\$ 93% Rel
 AGA 02/07 PTAT -0.7 91% Rel PTI +54
 ST SR BD DF RA TW RL FA
 +3.1 +1.0 +1.6 +2.3 L1.3 +1.6 P1.2 S0.6
 FU RH RW UC UD TP TL
 -2.5 +0.3 +0.8 -0.9 D4.0 W0.8 +2.7

JARIS HILLS PRIME FROSTY 000003036815

02/07 USDA PTA -427M +0.00% -19F -69NM\$ 16NM%ile
 +0.01% -12P -66CM\$ 60% Rel
 5 Rec YDev: -522M -20F -6P
 3 App 02/07 PTAT +0.0 55% Rel CPI -50
 Appraisal: 80 @ 6-10
 ST SR BD DF RA TW RL FA FU RH RW UC UD TP TL
 19 18 34 31 19 16 32 27 33 31 21 31 28 26 36
 2-01 280D 2X 7890M 4.3% 341F 3.4% 269P DHIR
 3-00 302D 2X 13280M 4.5% 593F 3.7% 495P DHIR
 4-00 272D 2X 13280M 4.4% 587F 3.6% 484P DHIA
 5-00 305D 2X 14640M 4.2% 617F 3.3% 487P DHIA
 6-02 335D 2X 12940M 4.4% 566F 3.4% 443P 99

JARIS HILLS FORTRESS ICY 78 @ 2-07 (78/76)

TROTACRE MERCURY LORD-ET 000000602119 (009GU00131)

02/07 USDA PTA +298M +0.03% +18F +92NM\$ 30NM%ile
 +0.01% +11P +96CM\$ 97% Rel
 AGA 02/07 PTAT -0.1 96% Rel PTI +54

BLACKWATER P JAY ADDIE 000003001068

02/07 USDA PTA +533M +0.08% +38F +140NM\$ 74NM%ile
 +0.09% +34P +179CM\$ 82% Rel
 4 Rec YDev: +2285M +144F +108P
 3 App 02/07 PTAT -0.6 72% Rel CPI +90
 Appraisal: 86 @ 5-10 Gold Star Dam - 1996
 3-05 333D 2X 21330M 5.0% 1072F 3.7% 798P DHIA

GEO MARS ANDY PRIME 000000600139 (001GU00182)

02/07 USDA PTA -194M -0.10% -26F -203NM\$ 0NM%ile
 -0.04% -13P -218CM\$ 86% Rel
 AGA 02/07 PTAT +2.2 83% Rel PTI -6

SHIMELS FANCYS FAYE 000003025730

02/07 USDA PTA -470M +0.07% -9F -60NM\$ 18NM%ile
 +0.02% -13P -57CM\$ 61% Rel
 3 Rec YDev: -444M +3F -11P
 2 App 02/07 PTAT -1.2 52% Rel CPI -85
 Appraisal: 75 @ 5-02
 2-05 364D 2X 12590M 4.8% 608F 3.2% 403P DHIA
 3-07 305D 2X 11080M 4.6% 507F 3.4% 373P DHIA
 4-07 255D 2X 9550M 4.5% 431F 3.3% 319P DHIA

SHIMELS FAYES FLOSSIE 78 @ 2-00
 1-10 276D 2X 9320M 3.9% 368F 3.4% 321P DHIA

THIRD DAM: SHIMELS FAWN FANCY 000003000987

4-06 305D 2X 17200M 4.3% 745F 3.5% 599P DHIA

LOT 22 PR-JARIS HILLS FORTRESS CINDI 000068014144

Born: 06-07-2004 Tattoo LE J91H
 Breeder & Owner: JAMES & DORIS BOLLECH
 ATHENS WI

FRESH: 07-24-06
 BRED: 09-15-06 DUE: 06-27-07
 MILLBORNE BOLERO 200GU00401 604747

1 App 02/07 PTAT +0.2 36% Rel
 Appraisal: 80 @ 2-02 (77/84)
 ST SR BD DF RA TW RL FA FU RH RW UC UD TP TL
 28 27 25 19 40 19 16 27 17 34 12 24 46 9 23
 2-01 283D 2X 10652M 4.4% 464F 3.4% 362P OS

NELLS GLOW ADMIRAL MAGIC 000000598858 (001GU00305)

02/07 USDA PTA +517M -0.07% +11F +11NM\$ 13NM%ile
 -0.03% +11P +0CM\$ 99% Rel
 AGA 02/07 PTAT +0.3 99% Rel PTI +20

TWIN L FARMS MAGIC FORTRESS-ET 000000602409 (001GU00391)

02/07 USDA PTA +741M -0.18% +0F +128NM\$ 34NM%ile
 -0.08% +11P +103CM\$ 95% Rel
 AGA 02/07 PTAT +0.7 93% Rel PTI +65
 ST SR BD DF RA TW RL FA
 +0.2 +1.1 +1.1 +0.9 L0.1 +0.6 P1.0 S0.8
 FU RH RW UC UD TP TL
 +0.0 +1.1 +0.5 +0.2 0.0 W1.1 -1.0

TWIN L FARMS FAYETTE FARRAH 000002959888

02/07 USDA PTA +371M +0.01% +18F +198NM\$ 87NM%ile
 -0.04% +6P +186CM\$ 80% Rel
 3 App 02/07 PTAT +0.4 70% Rel CPI +74
 Appraisal: 90 @ 5-07 Gold Star Dam - 1993
 3-02 365D 2X 27610M* 4.5% 1236F 3.2% 885P DHIA

PUREBRED GUERNSEY SIRE 00099PGS0002**PUREBRED GUERNSEY DAM 00099PGD0001****GT-JARIS HILLS CRISSY 000068014142**