

Guernsey Gold

The Guernsey Gold Heifer Sale started in 1986 as a small sale of select open heifers for junior members. In 2006, we saw 10 calves sell through 4 different sales that were entered in the Guernsey Gold calf project. These 10 calves sold for an average of \$2,615 to youth in 8 states. The top production winner of this group will be awarded over \$1,550 at the 2009 National Convention.

In 2007, at least five sales are participating in the Guernsey Gold program. The following sales will put monies into the Guernsey Gold pot:

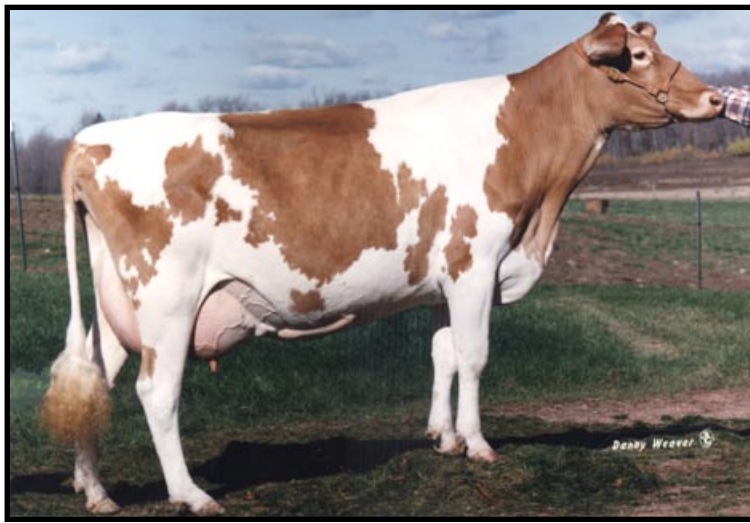
- | | | |
|-----------------------------------|-----------------------------|-----------------------|
| 1. Pennsylvania Blue Halter Sale | 2. Jaris Hill Dispersal | 3. Ozark Jubilee Sale |
| 4. International Guernsey Classic | 5. National Convention Sale | |

We encourage all juniors to participate in this program by bidding on the Guernsey Gold consignments. The production winners from the calves purchased this year will be recognized at the 2010 National Guernsey Convention.

The American Guernsey Association is very appreciative of the breeders who have nominated top-pedigreed heifers for this program. We also extend our thanks to the sale managements who have agreed to donate the monies into the Guernsey Gold pot.

RULES

1. Fifteen percent of the sale gross will be set aside for the production contest.
2. Purchaser must be between six and 19 years of age as of January 1 of the year he or she buys the calf.
3. The heifer must calve before reaching 30 months of age to be eligible to compete in the production contest.
4. The production contest ranking will be based on the animal's 2-year-old mature equivalent pounds of protein. These records must be DHIR or official DHI.
5. All heifers must be tested in a DHIR or DHI herd owned by the purchaser or the purchaser's parents or legal guardian. In the event that this is not possible, a written request may be made to the executive secretary for permission to test the animal in another herd in an adjoining county or area.
6. A junior member may not purchase an animal consigned by his or her immediate family.
7. A junior member may purchase only one Guernsey Gold Heifer Sale consignment per year.
8. Monies in the production contest fund will be divided into four prizes as follows: first - 40 percent; second - 30 percent; third - 20 percent; and fourth - 10 percent.
9. Heifers sold in 2007 will compete in the 2010 production contest. (Sell in 2007; calve in 2008 or early 2009; finish record in 2009 or early 2010.)
10. Loss, death or transfer of ownership of any purchased animal before the record is completed eliminates that entry and owner from the production contest.



GR-Truax Prairie F Wiffette EX-90

5-06 365D 27,820M 4.5% 1,240F 3.6% 1,001P
Fourth Dam of Lot 52 & GG53

LOT GG53 JARIS HILLS SPECIAL WHISPER 000068014193

Born: 05-28-2006 Tattoo LE 28JH
Breeder: EDWARD BOLLECH
PLAIN WI
Owner: JAMES & DORIS BOLLECH
ATHENS WI

PA: +613M +0.01% +29F -0.02% +17P +180CM\$ +184NM\$
PTAT +0.8 PTI +99
ST SR BD DF RA TW RL FA
+1.2 +1.0 +1.3 +0.9 L1.3 +0.6 P0.7 S0.1
FU RH RW UC UD TP TL
+0.7 +1.3 +0.8 +0.8 S0.1 W0.1 +0.2

JENS GOLD REGIS Z SPECIAL-ET 000000604915 (007GU00406)

PA: +913M +0.01% +42F -0.05% +22P +202CM\$ +216NM\$
PTAT +1.5 PTI +139
ST SR BD DF RA TW RL FA
+1.9 +1.1 +1.7 +1.6 L0.7 +1.1 P0.2 L0.1
FU RH RW UC UD TP TL
+2.1 +2.4 +1.7 +1.4 S1.0 C0.4 +0.1

JARIS HILLS GOLIATH WHISKEY 000003062530

02/07 USDA PTA +313M +0.01% +16F +152NM\$ 77NM%ile
+0.01% +12P +157CM\$ 54% Rel
4 Rec YDev: +1609M +71F +58P
3 App 02/07 PTAT +0.0 53% Rel CPI +58
Appraisal: 87 @ 4-08 (84/85)
ST SR BD DF RA TW RL FA FU RH RW UC UD TP TL
37 35 43 44 34 35 26 25 28 32 36 31 30 21 28
2-00 329D 2X 13170M 4.4% 584F 3.2% 419P 98
3-01 328D 2X 14930M 4.3% 644F 3.3% 487P 78
4-02 305D 2X 16150M 4.3% 694F 3.3% 526P 74
5-04 305D 2X 13600M 4.1% 562F 3.1% 423P 74
6-07 305D 2X 16370M 4.2% 689F 3.2% 516P 75



Laeschland Perfecto Wynonna-ET



Laeschland Bid Willow EX-90

2-01 331D 21,840M 4.3% 938F 3.6% 781P
Maternal Sister to Third Dam of Lot 52 & GG53

SELLING OPEN

MARODORE ENHANCER REGIS-ET 000000603223 (014GU00280)

02/07 USDA PTA +1237M -0.11% +35F +130NM\$ 34NM%ile
-0.11% +21P +93CM\$ 95% Rel
AGA 02/07 PTAT +1.4 94% Rel PTI +116

JENS GOLD ROYAL OAK Z SPRUCE 000003052204

02/07 USDA PTA +589M +0.13% +49F +301NM\$ 97NM%ile
+0.02% +23P +311CM\$ 66% Rel
5 Rec YDev: +1891M +138F +72P
5 App 02/07 PTAT +1.6 61% Rel CPI +161
Appraisal: 92 @ 6-01 (91/91) Gold Star Dam - 2002
6-11 365D 2X 22780M 4.7% 1073F 3.2% 736P DHIA

TROTACRE MERCURY LORD-ET 000000602119 (009GU00131)

02/07 USDA PTA +298M +0.03% +18F +92NM\$ 30NM%ile
+0.01% +11P +96CM\$ 97% Rel
AGA 02/07 PTAT -0.1 96% Rel PTI +54

JARIS HILLS GOLIATH WHISKER 000003050702

02/07 USDA PTA -112M +0.03% +1F +161NM\$ 80NM%ile
+0.01% -2P +164CM\$ 54% Rel
1 Rec YDev: -924M -36F -33P
1 App 02/07 PTAT -0.1 50% Rel CPI +28
Appraisal: 76 @ 2-07
2-05 305D 2X 12690M 4.3% 552F 3.3% 416P DHIA

THIRD DAM: LAESCHLAND PERFECTO WILLA-ET 000003025950

Appraisal: 90 @ 5-10
5-09 305D 2X 16760M 3.7% 622F 3.2% 537P DHIA

FOURTH DAM: GR-TRUAX PRAIRIE F WIFFETTE 2950289

Appraisal: 90 @ 5-09 Gold Star Dam - 1991
3-06 365D 2X 24200M 4.6% 1103F 3.7% 895P DHIA
4-07 327D 2X 23730M 4.6% 1099F 3.7% 875P* DHIA
5-06 365D 2X 27820M 4.5% 1240F 3.6% 1001P DHIA
6-09 365D 2X 26230M 4.4% 1158F 3.3% 868P DHIA
1959D 126,660M 4.6% 5,789F 3.6% 4,536P LIFE
4TH 3-YEAR-OLD NGS-MADISON 1988
HER DTRS:
LAESCHLAND PRIDE WHISPER 87 @ 4-06 Gold Star Dam-1994
6-06 305D 2X 20890M 4.5% 934F 3.2% 663P DHIR
LAESCHLAND BID WILLOW-ET 90 @ 2-09
2-02 331D 2X 21840M 4.3% 938F 3.6% 781P DHIA
LAESCHLAND PERFECTO WYNONNA-ET - pictured @ left
RES. ALL-AMERICAN SUMMER YEARLING 1994
1ST AGED COW ILLINOIS STATE FAIR 1998