



RED Plow Cora Coronet VG-87
 Nom. All-American Sr. 2-Year-Old 2006
 Paternal Sister to Lot 01

LOT 01 RED PLOW CAM COOKIE

Born: 11-11-2004 Tattoo LE RD4 RE RD4
 Breeder & Owner: DENNIS ROBERT E & RAYMOND E
 8131 ST RD
 ANGELICA NY 14709
 585-968-2098

PA: -432M +0.06% -11F +0.03% -10P -64CM\$ -71NM\$
 PTAT -0.2 PTI -30
 ST SR BD DF RA TW RL FA
 +0.6 +0.6 +0.0 -1.2 L0.6 +0.7 P0.2 L0.4
 FU RH RW UC UD TP TL
 +1.2 -0.3 -0.6 +0.1 S1.2 C0.7 +0.2

SECOND CHANCE PANSY REGIS PLOW 00000604442

PA: +412M +0.03% +22F -0.02% +10P +65CM\$ +71NM\$
 PTAT +0.6 PTI +62
 ST SR BD DF RA TW RL FA
 +1.8 +0.9 +0.8 +0.3 L1.3 +1.2 P0.1 L0.5
 FU RH RW UC UD TP TL
 +0.9 +1.0 +1.0 +0.9 S0.5 C1.0 -0.2

LITTLEFIELDS PRIME CAM 000003022412

02/07 USDA PTA -1276M +0.09% -43F -212NM\$ 2NM%ile
 +0.07% -30P -192CM\$ 63% Rel
 4 Rec YDev: -2105M -51F -36P
 3 App 02/07 PTAT -1.0 54% Rel CPI -119
 Appraisal: 88 @ 6-00
 ST SR BD DF RA TW RL FA FU RH RW UC UD TP TL
 31 36 38 27 25 35 24 25 24 36 38 40 29 34 30
 2-02 289D 2X 7890M 5.0% 392F 3.9% 311P DHIA
 3-02 291D 2X 7760M 4.9% 383F 3.8% 296P DHIA
 4-01 305D 2X 9350M 4.7% 437F 3.9% 362P DHIA
 5-05 319D 2X 13410M 4.5% 607F 3.8% 506P DHIA
 6-05 315D 2X 10850M 5.2% 565F 3.9% 421P 47

LITTLEFIELDS LOGIC CAMRA 91 @ 4-04
 4-02 351D 2X 12710M 4.3% 548F 3.5% 440P 48
 NOM. ALL-AMERICAN JR 3-YEAR-OLD 1999
 1ST 5-YEAR-OLD NY STATE FAIR 2001

LITTLEFIELDS BOSSMAN CANDY 75 @ 2-05
 LITTLEFIELDS GH CAMILIA 84 @ 4-04 (84/77)
 3-07 280D 2X 10650M 3.2% 345F 3.4% 357P DHIA
 LITTLEFIELDS RIDLE SIDE CUP
 4-03 255D 2X 11020M 3.2% 355F 3.1% 340P 90



RED Plow Cam Cookie
 1st Jr. 2-Year-Old New York State Fair 2006
 Sells as Lot 01

000068011654

LAST CALVING DATE: 03-27-06
 BRED: 11-09-06 DUE: 08-21-07
 LAND OF LIVING P GARRETT-ET 603126 072GU00134

1st JR. 2-YEAR-OLD NY STATE FAIR 2006
 SHOWS AS A SR. 2-YEAR-OLD IN 2007!

MARODORE ENHANCER REGIS-ET 00000603223 (014GU00280)

02/07 USDA PTA +1237M -0.11% +35F +130NM\$ 34NM%ile
 -0.11% +21P +93CM\$ 95% Rel
 AGA 02/07 PTAT +1.4 94% Rel PTI +116

PECKS KANE PANSY 000003028505

02/07 USDA PTA -414M +0.17% +9F +12NM\$ 35NM%ile
 +0.08% -1P +37CM\$ 51% Rel
 3 Rec YDev: +176M +87F +31P
 4 App 02/07 PTAT -0.3 52% Rel CPI +5
 Appraisal: 87 @ 4-10
 4-00 365D 2X 23680M 5.2% 1227F 3.5% 830P DHIA

LITTLEFIELDS MONARCH PRIME 00000601483

AGA 02/07 PTAT -0.5 50% Rel

LITTLEFIELDS SAMUEL CAMMIE 000002982951

02/07 USDA PTA -1180M +0.08% -39F -208NM\$ 2NM%ile
 +0.04% -32P -199CM\$ 59% Rel
 2 Rec YDev: -2801M -98F -73P
 3 App 02/07 PTAT -0.9 53% Rel CPI -121
 Appraisal: 78 @ 3-07
 2-03 305D 2X 9280M 4.2% 389F 3.4% 317P DHIA
 3-06 271D 2X 8850M 4.3% 384F 3.5% 308P DHIA

THIRD DAM: LITTLEFIELDS WINSTON CASSIE 000002891141

Appraisal: 82 @ 5-02

LOT 02 TOOLITE TRINITY'S G TIGER**000068012605**

Born: 03-26-2006 Tattoo LE T402

Breeder & Owner: TOOLEY RICHARD M

TOOLITE FARM

459 DEKALB RD

GRANVILLE NY 12832

518-642-3986

SELLING OPEN

PA: -457M +0.15% +4F +0.08% -3P +98CM\$ +73NM\$
PTAT +0.7 PTI +34

ST SR BD DF RA TW RL FA

+1.5 +0.5 -0.2 +0.2 H0.5 +0.7 P0.2 L0.1

FU RH RW UC UD TP TL

+1.3 +1.0 +1.1 +0.6 S1.5 C1.8 -1.3

ROZELYN PATMAR JAY GLACIER-ET 00000602961 (007GU00343)

02/07 USDA PTA +63M +0.16% +31F +246NM\$ 82NM%ile

+0.08% +16P +277CM\$ 93% Rel

AGA 02/07 PTAT +0.8 90% Rel PTI +105

ST SR BD DF RA TW RL FA

+1.1 +0.7 +0.1 +0.5 H1.4 +0.5 P0.3 L0.4

FU RH RW UC UD TP TL

+0.7 +0.8 +1.4 +0.3 S1.3 C1.4 -2.4

TOOLITE TRISHAS D TRINITY 000068000723

02/07 USDA PTA -976M +0.13% -23F -101NM\$ 11NM%ile

+0.07% -21P -81CM\$ 47% Rel

1 Rec YDev: -2464M -52F -42P

1 App 02/07 PTAT +0.5 41% Rel CPI -37

Appraisal: 82 @ 3-00 (82/80)

ST SR BD DF RA TW RL FA FU RH RW UC UD TP TL

28 36 28 20 14 40 34 28 36 33 30 38 36 36 22

2-04 305D 2X 9396M 5.3% 498F 3.9% 364P DHI

THIRD DAM: TOOLITE TAFFYS T TAMMY 000002994696

Appraisal: 80 @ 2-07

FOURTH DAM: TOOLITE MERCURYS TAFFY 00000294694-3.1

Appraisal: 86 @ 4-02

5-02 305D 2X 18880M 5.3% 999F 3.7% 707P DHIA

FIFTH DAM: TOOLITE AGNIS TESSIE 000002889083

Appraisal: 84 @ 4-08

SIXTH DAM: TOOLITE TOBYS TIC 000002770642

Appraisal: 83 @ 5-06 Gold Star Dam - 1985

5-07 351D 2X 17990M 4.9% 875F 3.8% 691P DHIA

ROZELYN PRINCE JAY-ET 00000600064 (001GU00332)

02/07 USDA PTA +86M +0.09% +19F +16NM\$ 13NM%ile

+0.14% +27P +69CM\$ 98% Rel

AGA 02/07 PTAT -1.3 98% Rel PTI +11

ROZELYN PATMAR P GINA-ET 000003010608

02/07 USDA PTA -359M +0.25% +26F +263NM\$ 95NM%ile

+0.15% +13P +315CM\$ 80% Rel

2 Rec YDev: +320M +122F +90P

2 App 02/07 PTAT +0.6 71% Rel CPI +88

Appraisal: 90 @ 3-07

3-05 365D 2X 22460M 5.4% 1217F 4.2% 951P DHIA

FOUR WINDS DOLLAR-ET 00000604132 (200GU00107)

02/07 USDA PTA -931M +0.09% -26F -244NM\$ 0NM%ile

+0.07% -18P -222CM\$ 84% Rel

AGA 02/07 PTAT +1.1 69% Rel PTI -22

TOOLITE SHIPMATES TRISHA 000003016244

02/07 USDA PTA -822M +0.12% -17F +47NM\$ 46NM%ile

+0.04% -21P +56CM\$ 63% Rel

5 Rec YDev: -1063M -2F -19P

1 App 02/07 PTAT -0.2 49% Rel CPI -47

Appraisal: 91 @ 8-09

2-01 293D 2X 10070M 5.1% 512F 3.7% 372P DHIR

3-01 305D 2X 15450M 4.9% 753F 3.8% 589P DHIA

5-03 305D 2X 18490M 4.6% 850F 3.6% 658P DHIR

6-03 305D 2X 18590M 5.4% 999F 3.6% 663P DHIA

7-05 309D 2X 14280M 4.8% 680F 3.6% 515P 93

8-05 305D 2X 19940M 4.6% 920F 3.4% 672P DHIA

9-11 316D 2X 16280M 5.3% 870F 3.4% 552P 94

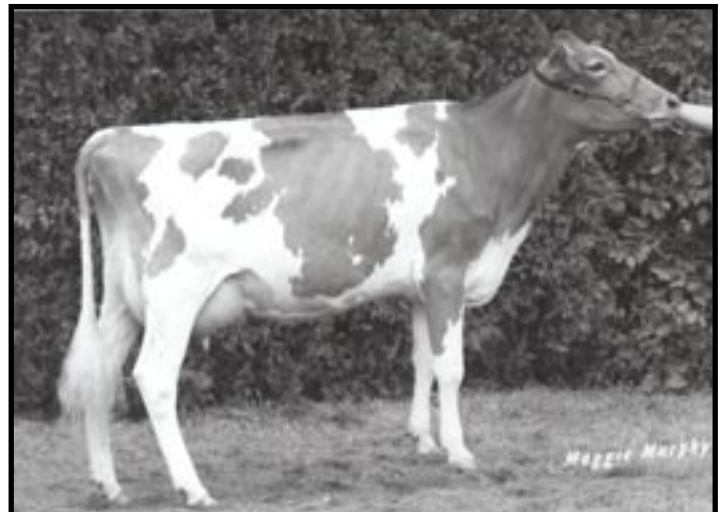
2318D 120340M 5.0% 6014F 3.6% 4298P LIFE

TOOLITE TRISHAS B TRACEY 86 @ 2-05

2-02 334D 2X 13020M 4.8% 621F 3.3% 425P 94



Littlefields Logic Camra EX-91
Nom. All-American Jr. 3-Year-Old 1999
Maternal Sister to Lot 01



Littlefields Kickoff Carrie VG-83
4th Jr. 2-Year-Old NJS-Harrisburg 1988
Maternal Family Member to Lot 01