



**Coulee Crest Valor Krysta EX-90**

5-09 360D 41,185M 3.8% 1,555F 3.2% 1,328P  
Dam of Lot 37

**LOT 37 COULEE CREST SKIPPER KYRA 000068014026**

Born: 12-01-2006 Tattoo LE P936 RE  
Breeder & Owner: DONALD T PETERSON  
COULEE CREST FARM  
7293 ST HWY 33  
CASHTON WI 54619  
608-654-7889

PA: +1119M -0.12% +30F -0.04% +31P +206CM\$ +214NM\$  
PTAT +1.4 PTI +139

**COULEE CREST LUXURY SKIPPER-ET 000604230 (200GU00108)**

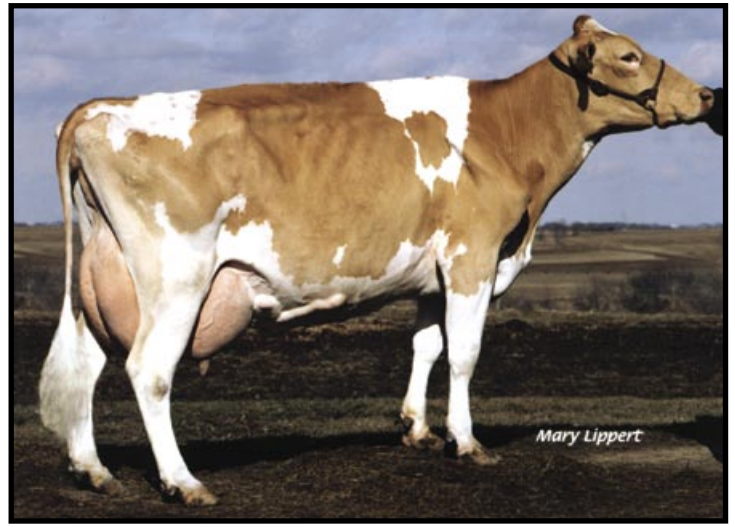
05/07 USDA PTA +942M -0.06% +32F +163NM\$ 59NM%ile  
-0.06% +21P +145CM\$ 69% Rel  
AGA 05/07 PTAT +1.5 64% Rel PTI +124  
ST SR BD DF RA TW RL FA  
+2.1 -0.1 +0.2 +1.9 L1.5 +0.4 P1.5 L0.2  
FU RH RW UC UD TP TL  
+1.0 +3.1 +1.8 +0.4 S0.7 C2.0 -2.2

**COULEE CREST VALOR KRISTA 000003075370**

05/07 USDA PTA +1296M -0.17% +27F +265NM\$ 94NM%ile  
-0.01% +41P +267CM\$ 59% Rel  
5 Rec YDev: +3360M +79F +111P  
3 App 05/07 PTAT +1.3 55% Rel CPI +151  
Appraisal: 90 @ 6-04 (87/87)  
ST SR BD DF RA TW RL FA FU RH RW UC UD TP TL  
39 36 38 47 27 39 34 34 27 44 50 21 11 14 38  
1-11 305D 2X 15350M 4.2% 649F 3.3% 512P DHIA  
3-08 341D 3X 23230M 4.1% 961F 3.3% 762P 92  
4-08 346D 3X 30440M 3.6% 1088F 3.3% 1013P 90  
5-09 360D 3X 41185M\* 3.8% 1555F 3.2% 1328P\* 89  
1572D 117,590M 3.9% 4,557F 3.3% 3,871P LIFE  
RANKS #77 ON THE MAY 2007 CPI LIST

**COULEE CREST BANGER KRISTA 87 @ 5-01 (81/83)**

Gold Star Dam - 2006  
2-11 365D 3X 38349M 4.0% 1540F 3.2% 1241P 89  
NYALA-BEDFORD TROPHY 2005 - HIGH 2-YEAR-OLD MILK RECORD  
RANKS #5 ON THE MAY 2007 CPI LIST



**Coulee Crest Banger Krista VG-87**

2-11 365D 38,349M 4.0% 1,540F 3.2% 1,241P  
Maternal Sister to Lot 37

SELLING OPEN

#56 ON THE MAY 2007 TOP HEIFER INDEX LIST

**TROTACRE JAY MR LUXURY-ET 000000602751 (007GU00339)**

05/07 USDA PTA +1001M -0.12% +24F +209NM\$ 86NM%ile  
-0.03% +27P +200CM\$ 97% Rel  
AGA 05/07 PTAT +1.0 95% Rel PTI +114

**COULEE CREST ENHANCER SNOW-ET 000003050736**

05/07 USDA PTA +1007M +0.07% +57F +123NM\$ 70NM%ile  
-0.06% +22P +103CM\$ 71% Rel  
1 Rec YDev: +2427M +221F +73P  
1 App 05/07 PTAT +1.4 68% Rel CPI +130  
Appraisal: 88 @ 2-08  
2-01 365D 2X 21059M 6.3% 1319F 3.7% 784P DHIA

**TAMARACKS PERFECTOS VALOR-ET 000602301 (014GU00265)**

05/07 USDA PTA +338M -0.09% -1F -79NM\$ 4NM%ile  
-0.01% +9P -82CM\$ 91% Rel  
AGA 05/07 PTAT +1.3 89% Rel PTI +34

**COULEE CREST PATRICK KRISTAL 000003020722**

05/07 USDA PTA +608M -0.13% +5F +180NM\$ 83NM%ile  
+0.01% +22P +188CM\$ 58% Rel  
3 Rec YDev: +2413M +44F +85P  
3 App 05/07 PTAT +0.8 57% Rel CPI +84  
Appraisal: 87 @ 3-07  
1-11 305D 2X 15710M 3.9% 610F 3.5% 554P DHIA  
3-02 305D 2X 20050M 4.1% 818F 3.6% 715P DHIA  
3-09 365D 2X 23193M 4.1% 950F 3.6% 835P DHIA  
5-02 305D 2X 18020M 4.1% 742F 3.4% 609P DHIR

**THIRD DAM: GR-CRICK RIDGE ABLES GERILEN 000002990252**

Appraisal: 88 @ 4-08  
3-05 305D 2X 17890M 4.6% 814F 3.7% 658P DHIA  
4-06 305D 2X 21340M 4.1% 876F 3.5% 756P DHIA