

Eby Manor Billboard Wanda VG-87

All-American Jr. Yearling 1997

Full Sister to Dam of Lot #01

LOT# 01 \$ 3,000

BORN: 04-10-02

BREEDER & OWNER: EBY JAMES
 EBY MANOR LTD
 WATERLOO ONTARIO

BROWN EDEN TRADITION 040020221

02/03 USDA PTA +257M +0.09% +26F
 PROT +0.06% +18P

EBY MANOR BILLBOARD WEST VG-85(CAN)

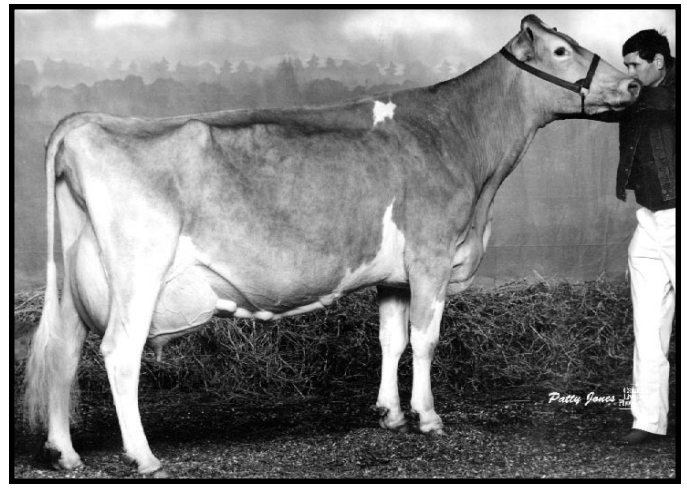
2-10 305D 2X 12489M 4.7% 585F 3.5% 440P CAN



Eby Manor Billboard Wonder EX-90



Eby Manor Captains Wayward EX-92



Eby Manor Claude Wynona EX-93

6-04 365D 26,659M 5.6% 1,500F 3.9% 1,049P

Maternal Sister to Dam of Lot #01

EBY MANOR TRADITION WINICA 8665202

SELLING OPEN
 JOHNES VACCINATE

YELLOW CREEK FAYETTE CALEB-ET 000599164 (029G0890)

02/03 USDA PTA +167M +0.03% +12F +22\$ +41CY\$ 97% REL
 PROT +0.03% +10P +35P\$ 97% REL
 AGA 02-03 PTAT -0.3 96% REL PTI +33

BROWN EDEN BIONIC GEISHA 040195264 VG-85(CAN)

1-11 305D 2X 17490M 4.6% 801F 3.6% 629P CAN

OLYMPIC VIEW F BILLBOARD-ET 000599229

02/03 USDA PTA -26M -0.13% -22F -20\$ -18CY\$ 92% REL
 PROT +0.01% 0P -18P\$ 92% REL
 AGA 02-03 PTAT +1.3 80% REL PTI -1

EBY MANOR CAPTAINS WAYWARD 040189768 EX-92(CAN)

2-02 305D 2X 11653M 5.1% 598F 3.7% 431P CAN
 3-03 305D 2X 12577M 5.7% 719F 4.1% 513P CAN
 4-04 305D 2X 15057M 5.6% 840F 4.0% 609P CAN
 5-04 305D 2X 15492M 5.3% 825F 3.9% 612P CAN
 6-05 305D 2X 12016M 5.6% 678F 4.3% 513P CAN
 7-08 305D 2X 13499M 5.2% 702F 3.7% 493P CAN
 4TH FOUR-YEAR-OLD ROYAL WINTER FAIR 1991
 4TH FIVE-YEAR-OLD ROYAL WINTER FAIR 1992

EBY MANOR BILLBOARD WESLENE

2-00 305D 2X 18359M 3.6% 664F 3.4% 625P CAN

EBY MANOR BILLBOARD WENDY GP-84(CAN)

4-00 305D 2X 15396M 4.9% 759F 3.7% 574P CAN

EBY MANOR BILLBOARD WONDER EX-90 (CAN)

5-06 305D 2X 16876M 5.0% 836F 3.5% 596P CAN

EBY MANOR CLAUDE WINONA EX-93 (CAN)

6-04 365D 2X 26659M 5.6% 1500F 3.9% 1049P CAN

ALL-CANADIAN 1994 & 1995

EBY MANOR BILLBOARD WANDA VG-87 (CAN)

ALL-AMERICAN JR YEARLING 1997

JR CHAMPION NGS-MADISON 1997

JR CHAMPION ROYAL WINTER FAIR 1997

LOT# 02 \$ 950

MILLBORNE YC CHRIS BUTTERCUP

003076708

BORN: 05-19-02 TATTOO RE MM5 TATTOO LE MM5
BREEDER & OWNER: MILLER P MOREY
MILLBORNE FARM
PO BOX 748
GRANBY CT 06035

SELLING OPEN

PA: +307M +.01% +15F +36\$ +.02% +13P +48P\$ +53CY\$
PTAT +0.2
ST SR DF BD FA RL RA TW
-0.4 +0.1 -0.6 +0.1 L0.3 P0.8 0.0 +0.3
FU RW RH TP TL UC UD
+0.7 -0.3 -0.4 C0.4 -1.4 -0.4 S1.0

YELLOW CREEK JAY CHRIS 000602781 (072G0128)
02/03 USDA PTA +329M 0.0% +14F +36\$ +68CY\$ 64% REL
PROT +0.05% +18P +57P\$ 65% REL
AGA 02-03 PTAT -0.5 71% REL PTI +48
ST SR DF BD FA RL RA TW
-0.4 -0.3 -0.9 -0.8 L0.3 P1.4 H0.5 -0.1
FU RW RH TP TL UC UD
+0.6 -0.7 -0.7 C0.3 -2.6 -1.0 S1.7

TROTACRE LORAL BUTTERFLY 003064606 84 @ 2-06
02/03 USDA PTA +284M +0.02% +16F +35\$ +38CY\$ 43% REL
PROT -0.01% +8P +38P\$ 41%ILE P\$
02/03 USDA PPA +201M +15F +27\$ +3P +24P\$ +21CY\$
1 REC YD -49M +12F +6\$ -4P 0P\$ -3CY\$
1 APP 02-03 PTAT +0.9 50% REL CPI +79
2-00 2X 244D 2X 12378M 4.0% 495F 3.3% 406P RIP
305D 18299M 768F 586P PROJ ME

ST SR BD DF RA TW RL FA FU RH RW UC UD TP TL
26 26 27 24 29 26 23 21 24 22 27 26 32 26 26

LOT# 03 \$ scratch

BORN: 05-04-01
BREEDER & OWNER: COMFORT CRAIG
ST ANNS ONTARIO

FOUR WINDS MAGICMAN-ET 000602265
11/02 USDA PTA -24M +0.05% +7F +4\$ +12CY\$ 92% REL
PROT +0.02% +2P +9P\$ 90% REL
AGA 02-03 PTAT +1.7 88% REL PTI +63
ST SR DF BD FA RL RA TW
+4.5 +2.7 +1.5 +2.7 S0.8 S0.9 L0.5 +3.0
FU RW RH TP TL UC UD
+1.7 +1.6 +0.6 W1.3 +0.5 +0.2 S1.5

COMFORT FARMS LUCILLA 10022731 GP-84 (CAN)
2-02 305D 2X 10448M 4.8% 506F 3.8% 394P CAN
3-01 305D 2X 14098M 4.5% 631F 3.6% 502P CAN

ROZELYN PRINCE JAY-ET 000600064 (021G0332)
02/03 USDA PTA +568M +0.08% +38F +74\$ +157CY\$ 98% REL
PROT +0.14% +40P +128P\$ 98% REL
AGA 02-03 PTAT -0.9 99% REL PTI +123

YELLOW CREEK VICTORY CATHLEEN 002980685 90 @ 4-09
02/03 USDA PTA +322M 0.0% +15F +37\$ +27CY\$ 72% REL
PROT -0.03% +5P +32P\$ 45%ILE P\$
02/03 USDA PPA +888M +21F +85\$ +15P +74P\$ +63CY\$
3 REC YD +1113M +48F +124\$ +25P +123P\$ +116CY\$
2 APP 02-03 PTAT +0.6 66% REL CPI +59
2-04 365D 2X 23040M 4.1% 941F 3.3% 764P DHIR

TROTACRE MERCURY LORAL-ET 000602121 (007G0322)
02/03 USDA PTA +373M -0.04% +10F +37\$ +39CY\$ 95% REL
PROT -0.02% +10P +40P\$ 95% REL
AGA 02-03 PTAT +1.7 95% REL PTI +82

TROTACRE BENNY BUTTERFLY 003054638 85 @ 4-09
02/03 USDA PTA +217M +0.08% +22F +34\$ +39CY\$ 54% REL
PROT 0.0% +7P +38P\$ 52%ILE P\$
02/03 USDA PPA -507M +11F -30\$ -7P -21P\$ -12CY\$
2 REC YD -434M +13F -23\$ -6P -15P\$ -8CY\$
3 APP 02-03 PTAT +0.5 59% REL CPI +70
2-02 305D 2X 14458M 4.6% 671F 3.7% 532P DHI
4-03 305D 3X 17410M 4.7% 824F 3.3% 576P DHI

THIRD DAM: LEVEL SQUARE SMOKEY BAND 90 @ 5-04
3-03 305D 2X 21650M 4.7% 1014F 3.6% 784P DHI
FOURTH DAM: LEVEL SQUARE IDEAL BERRY 89 @ 4-06
4-02 305D 2X 21100M 5.2% 1092F 3.8% 807P DHI

COMFORT FARMS LULU 8508344

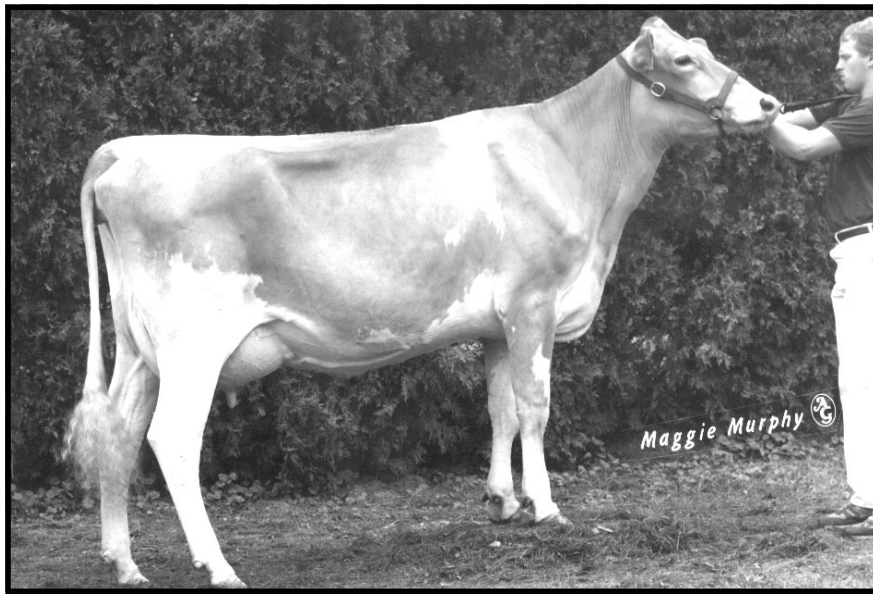
BRED: 11-07-02 DUE: 08-19-03
SPRING WALK STREAKS VICTOR 000601990
02/03 USDA PTA +669M +0.01% +32F +77\$ +85CY\$ 86% REL
PROT -0.02% +19P +84P\$ 86% REL
AGA 02-03 PTAT +0.1 58% REL
WOODED VIEW ADMIRALS IDEAL 000597119 (029G0854)
SPRING WALK VICTORYS STREAK 002961250 80 @ 4-09

NELLS GLOW ADMIRAL MAGIC 000598858 (021G0305)
02/03 USDA PTA +1102M -0.08% +35F +113\$ +118CY\$ 99% REL
PROT -0.04% +29P +120P\$ 99% REL
AGA 02-03 PTAT +0.8 99% REL PTI +169

FOUR WINDS B T BLOSSOM-ET 002899922 93 @ 8-03
02/03 USDA PTA -851M +0.09% -25F -85\$ -79CY\$ 76% REL
PROT +0.06% -19P -84P\$ 03%ILE P\$
02/03 USDA PPA -193M +12F -5\$ +30P +64P\$ +106CY\$
5 REC YD -1027M -20F -95\$ -7P -62P\$ -36CY\$
2 APP 02-03 PTAT +0.2 67% REL
7-02 365D 2X 24710M 4.3% 1060F 3.6% 878P DHIR

TANNERY HILL CHAMPIONS CLAUDE 040018848 (072G0046)
11/97 USDA PTA -207M +0.07% 0F -16\$ -9CY\$ 86% REL
PROT +0.03% -3P -12P\$ 85% REL
AGA 11-97 PTAT 0.0 76% REL / PTI -9

COMFORT FARMS LUCIE 198505 VG-86(CAN)
2-02 305D 2X 10538M 4.7% 499F 3.5% 374P CAN
3-03 305D 2X 11811M 4.4% 517F 3.7% 431P CAN
4-04 305D 2X 13475M 4.2% 561F 3.5% 466P CAN
5-05 215D 2X 14363M 4.8% 691F 3.6% 519P CAN



Wheeler Acres Fayette Jane EX-92

4-10 305D 17,250M 4.0% 682F 3.4% 594P

Granddam of Lot #04

LOT# 04 \$ 2,100

WHEELER ACRES REWARD PANSY

003075964

BORN: 04-23-02 TATTOO RE 423WTATTOO LE 423W
 BREEDER & OWNER: FLEMING PL & MA & WHEELER TERRY W
 2092 ST RT 326
 AUBURN NY 13021

SELLING OPEN

PA: +1254M -.13% +34F +123\$ -.07% +30P +125P\$ +118CY\$
 PTAT +1.8
 ST SR DF BD FA RL RA TW
 +2.9 +1.3 +2.2 +1.4 S0.5 S0.1 L0.5 +1.3
 FU RW RH TP TL UC UD
 +0.2 +1.4 +1.9 C0.8 +0.3 +0.5 D0.2

SHERMA VICTORY ELLAS ENHANCER 000600510 (029G0918)
 02/03 USDA PTA +1425M -0.05% +55F +153\$ +136CY\$ 97% REL
 PROT -0.1% +30P +148P\$ 97% REL
 AGA 02-03 PTAT +2.1 97% REL PTI +207

RIPLEY FARMS ENHANCER REWARD-ET 000603468 (001G0500)
 02/03 USDA PTA +2104M -0.2% +58F +208\$ +188CY\$ 63% REL
 PROT -0.13% +46P +204P\$ 63% REL
 AGA 02-03 PTAT +2.4 58% REL PTI +254
 ST SR DF BD FA RL RA TW
 +4.1 +1.3 +4.2 +1.5 S0.6 P0.1 L1.6 +1.2
 FU RW RH TP TL UC UD
 -1.3 +2.7 +3.3 C0.8 -0.6 +1.2 D1.5

BRIDGMONT RAINBOWS RUBY RED 003013709 87 @ 3-10
 02/03 USDA PTA +1946M -0.19% +53F +192\$ +191CY\$ 69% REL
 PROT -0.09% +48P +199P\$ 99%ILE P\$
 02/03 USDA PPA +5300M +152F +529\$ +139P +564P\$ +553CY\$
 2 REC YD +5237M +159F +529\$ +143P +576P\$ +571CY\$
 2 APP 02-03 PTAT +2.5 62% REL CPI +289
 2-01 365D 3X 24670M 4.2% 1024F 3.3% 823P DHIR

WHEELER ACRES LORAL PAT 003053813 82 @ 4-03
 02/03 USDA PTA +403M -0.05% +9F +38\$ +48CY\$ 53% REL
 PROT 0.0% +13P +46P\$ 53%ILE P\$
 02/03 USDA PPA +1827M +64F +192\$ +62P +232P\$ +245CY\$
 3 REC YD +1802M +63F +189\$ +63P +232P\$ +247CY\$
 3 APP 02-03 PTAT +1.2 58% REL CPI +91
 2-01 281D 2X 10490M 4.4% 463F 3.2% 335P DHI
 3-01 304D 2X 14740M 4.0% 585F 3.4% 497P DHI
 ST SR BD DF RA TW RL FA FU RH RW UC UD TP TL
 35 32 29 36 15 40 38 21 28 33 28 25 16 23 34

TROTACRE MERCURY LORAL-ET 000602121 (007G0322)
 02/03 USDA PTA +373M -0.04% +10F +37\$ +39CY\$ 95% REL
 PROT -0.02% +10P +40P\$ 95% REL
 AGA 02-03 PTAT +1.7 95% REL PTI +82

WHEELER ACRES FAYETTE JANE 002963616 92 @ 6-01
 02/03 USDA PTA -309M -0.07% -25F -44\$ -54CY\$ 55% REL
 PROT -0.01% -11P -52P\$ 08%ILE P\$
 1 APP 02-03 PTAT +1.0 59% REL CPI -23
 4-10 305D 2X 17250M 4.0% 682F 3.4% 594P DHIA
 5-11 365D 2X 16950M 3.8% 641F 3.5% 587P DHIR
 7-06 305D 2X 13590M 3.9% 528F 3.6% 487P DHIA

WHEELER ACRES SIMON JASMINE PTA -38\$ 74 @ 3-06
 2-00 305D 2X 11670M 4.0% 461F 3.3% 389P DHIA

LOT# 05 \$ 850

KNAPPS AWARD MOLLY

003074765

BORN: 09-03-01 TATTOO RE K313TATTOO LE K313
BREEDER: KNAPP D RANDY & FAMILY
EPWORTH IA 52045
OWNER: ST PIERRE DANIEL
82 OLD PINE HILL RD N
BERWICK ME 03901

SELLING OPEN
JOHNES VACCINATE

PA: +539M +.04% +30F +65\$ -.02% +14P +69P\$ +68CY\$
PTAT +1.2
ST SR DF BD FA RL RA TW
-0.1 +0.3 +0.4 +0.7 L0.1 P0.2 L0.3 +0.3
FU RW RH TP TL UC UD
+0.1 +0.5 +0.4 C0.2 +0.2 +0.8 D0.3

KNAPPS AWARD-ET 000603602 (200G0101)
PA: +781M +.03% +40F +92\$ -.06% +17P +89P\$ +82CY\$
PTAT +1.8
ST SR DF BD FA RL RA TW
+1.7 +0.5 +2.0 +0.7 S0.5 P0.3 L1.3 +0.5
FU RW RH TP TL UC UD
+0.6 +2.3 +2.1 C0.6 -0.8 +1.4 S0.4

KNAPPS LOGIC MELODY 003069321 80 @ 2-06
02/03 USDA PTA +298M +0.04% +20F +39\$ +54CY\$ 49% REL
PROT +0.02% +12P +49P\$ 53%ILE P\$
02/03 USDA PPA +1335M +61F +151\$ +37P +164P\$ +164CY\$
1 REC YD +1458M +73F +170\$ +52P +208P\$ +221CY\$
1 APP 02-03 PTAT +0.6 50% REL CPI +82
1-10 365D 2X 22800M 4.3% 974F 3.3% 741P DHIR

ST SR BD DF RA TW RL FA FU RH RW UC UD TP TL
25 19 24 23 25 47 17 25 21 28 27 34 29 23 32

THIRD DAM: MT ZION NED MELODY 82 @ 3-10

FOURTH DAM: MT ZION BRICE NICKY 84 @ 3-06

SHERMA VICTORY ELLAS ENHANCER 000600510 (029G0918)
02/03 USDA PTA +1425M -0.05% +55F +153\$ +136CY\$ 97% REL
PROT -0.1% +30P +148P\$ 97% REL
AGA 02-03 PTAT +2.1 97% REL PTI +207

KNAPPS PERFECTO ALFINA 003021761 92 @ 4-00
02/03 USDA PTA +136M +0.11% +24F +30\$ +28CY\$ 68% REL
PROT -0.01% +3P +29P\$ 63%ILE P\$
02/03 USDA PPA +1164M +91F +162\$ +29P +167P\$ +163CY\$
2 REC YD +1701M +112F +220\$ +43P +228P\$ +223CY\$
4 APP 02-03 PTAT +1.4 64% REL CPI +101
3-03 365D 2X 34130M* 4.7% 1614F* 3.4% 1176P* DHIR

TROTACRE IDEAL LOGIC-ET 000602123 (001G0071)
02/03 USDA PTA +679M 0.0% +30F +76\$ +86CY\$ 93% REL
PROT -0.02% +20P +85P\$ 93% REL
AGA 02-03 PTAT +1.7 94% REL PTI +136

MT ZION JASPER MOLLIE 003048077 85 @ 3-04
02/03 USDA PTA -359M +0.1% -1F -28\$ -13CY\$ 60% REL
PROT +0.05% -4P -20P\$ 26%ILE P\$
02/03 USDA PPA -660M +35F -23\$ +15P +38P\$ +77CY\$
3 REC YD -516M +21F -23\$ +11P +23P\$ +53CY\$
2 APP 02-03 PTAT +0.1 59% REL CPI -6
2-03 316D 2X 15730M 4.7% 740F 3.6% 571P DHIR
3-02 305D 2X 18560M 4.3% 974F 3.3% 741P DHIR

MT ZION ENHANCER JULES ROSE PTA +47\$ 72 @ 3-11
2-03 350D 2X 15700M 4.7% 738F 3.2% 502P DHI

LOT# 06 \$ 1,200

EBY MANOR BILLBOARD INDIRA

8454015

BORN: 01-20-01
BREEDER & OWNER: EBY JAMES
EBY MANOR LTD
WATERLOO ONTARIO

SELLING FRESH & OPEN
LAST CLAVING DATE: FEB. 1, 2003 - 55# ON FIRST TEST
JOHNES VACCINATE

OLYMPIC VIEW F BILLBOARD-ET 000599229
02/03 USDA PTA -26M -0.13% -22F -20\$ -18CY\$ 92% REL
PROT +0.01% 0P -18P\$ 92% REL
AGA 02-03 PTAT +1.3 80% REL PTI -1
ST SR DF BD FA RL RA TW
+4.8 +2.0 +2.3 +3.3 S0.3 P1.2 L3.4 +1.9
FU RW RH TP TL UC UD
+0.8 +1.2 +1.2 C0.4 +1.7 -0.8 S0.3

EBY MANOR WARDEN ISABORA 10000012 VG-88(CAN)
2-03 305D 2X 14586M 5.3% 770F 3.6% 526P CAN
4-06 305D 2X 17945M 5.6% 1001F 3.8% 682P CAN

DUTCH MILL TELESTARS FAYETTE 000591871 (021G0247)
02/03 USDA PTA -128M -0.05% -14F -21\$ -24CY\$ 99% REL
PROT 0.0% -4P -23P\$ 99% REL
AGA 02-03 PTAT +0.9 99% REL PTI -7

ROBINDELL TOP BONNIE 002710352 93 @ 4-06
08/00 USDA PTA -304M -0.05% -21F -40\$ -35CY\$ 81% REL
PROT +0.03% -6P -38P\$ 25%ILE P\$
4 REC YD +185M -10F +6\$ +67P +132P\$ +205CY\$
2 APP 08-97 PTAT +1.4 54% REL / CPI -29
6-06 305D 2X 22660M 4.8% 1083F DHIR

EBY MANOR BUTTERMOST WARDEN 040020223
02/03 USDA PTA -247M 0.24% +26F 85% REL
PROT 0.07% 2P 85% REL
AGA 02-03 PTAT -0.9 47% PTI +22

EBY MANOR COLUMBUS IZZY 199250 GP-80 (CAN)
2-02 305D 2X 13004M 5.3% 689F 3.8% 491P CAN
3-06 305D 2X 18150M 5.3% 961F 3.7% 671P CAN

LOT# 07 \$ 775**DOGWOOD LANE SONIC WANDA****003074850**

BORN: 12-01-01 TATTOO LE 22DL22
 BREEDER: MYERS JOHN H
 WORTON MD 21678
 OWNER: FRIENDSHIP FARM
 RICHARD M & JUDITH H WHALEN
 560 VERBANK RD
 MILLBROOK NY 12545

SELLING OPEN

4th INT CALF NY STATE FAIR 2002
 RES. JR. CHAMPION RHINEBECK CTY FAIR 2002

PA: +916M -.07% +30F +94\$ -.04% +24P +100P\$ +98CY\$
 PTAT +0.9
 ST SR DF BD FA RL RA TW
 +0.7 +0.6 +0.6 +0.4 S0.4 P0.9 L1.0 +0.6
 FU RW RH TP TL UC UD
 -0.2 +1.1 +0.7 W0.1 +0.4 +0.8 S0.2

COULEE CREST SABER SONIC-ET 000603682 (001G0407)

02/03 USDA PTA +909M +0.08% +53F +112\$ +149CY\$ 58% REL
 PROT +0.03% +34P +139P\$ 58% REL
 AGA 02-03 PTAT +0.8 55% REL PTI +178
 ST SR DF BD FA RL RA TW
 +1.2 +0.7 +0.8 +0.6 S0.1 P0.1 L0.8 +0.5
 FU RW RH TP TL UC UD
 -0.3 +1.4 +0.6 W1.3 +0.3 +0.2 S0.5

DOGWOOD LANE BERNIE WAY 003056119 83 @ 1-05

02/03 USDA PTA +922M -0.21% +7F +76\$ +48CY\$ 45% REL
 PROT -0.1% +14P +62P\$ 65%ILE P\$
 02/03 USDA PPA +2836M +32F +243\$ +52P +218P\$ +185CY\$
 2 REC YD +3116M +42F +273\$ +53P +236P\$ +196CY\$
 2 APP 02-03 PTAT +0.9 53% REL CPI +78
 2-04 301D 2X 12800M 3.8% 487F 3.1% 396P DHI
 3-04 365D 2X 21170M 4.0% 847F 3.1% 654P DHI
 ST SR BD DF RA TW RL FA FU RW RH UC UD TP TL
 33 33 34 31 34 34 17 34 26 33 33 32 26 34 31

TAG LANE BUTTERMOST SABER 000601734 (009G0125)

02/03 USDA PTA +542M +0.09% +39F +73\$ +110CY\$ 96% REL
 PROT +0.05% +25P +98P\$ 96% REL
 AGA 02-03 PTAT -0.6 96% REL PTI +100

FORHAR MAGIC SHOW 003034573 88 @ 2-09

02/03 USDA PTA +1574M -0.03% +64F +172\$ +178CY\$ 78% REL
 PROT -0.06% +41P +182P\$ 99%ILE P\$
 02/03 USDA PPA +5266M +216F +577\$ +156P +648P\$ +658CY\$
 2 REC YD +5743M +229F +624\$ +169P +699P\$ +709CY\$
 1 APP 02-03 PTAT +2.6 67% REL CPI +295
 2-03 365D 2X 27610M* 5.0% 1371F* 3.6% 986P* DHIR

DOGWOOD LANE TRUDYS BERNIE 000603614

02/03 USDA PTA +537M -0.17% -3F +39\$ +9CY\$ 54% REL
 PROT -0.08% +4P +22P\$ 54% REL
 AGA 02-03 PTAT +0.8 74% REL PTI +25

DOGWOOD LANE SPECIAL LOALEE 003025185 80 @ 5-08

02/03 USDA PTA +707M -0.17% +4F +57\$ +43CY\$ 58% REL
 PROT -0.06% +13P +51P\$ 64%ILE P\$
 02/03 USDA PPA +2325M +43F +213\$ +61P +228P\$ +224CY\$
 3 REC YD +1695M +28F +153\$ +41P +157P\$ +149CY\$
 2 APP 02-03 PTAT +0.7 58% REL CPI +63
 2-04 305D 2X 13370M 4.5% 599F 3.6% 477P DHIR
 3-06 323D 2X 15920M 4.5% 724F 3.6% 580P DHIR
 4-07 365D 2X 19870M 4.2% 831F 3.6% 717P DHIR

DOGWOOD LANE HENRYS LOLA PTA +80\$ 80 @ 3-08
 2-01 365D 2X 17400M 4.0% 692F 3.4% 593P DHI

LOT# 08 \$ 1,150**GREEN SLOPES BRYANT DESTINY****003080468**

BORN: 12-05-02 TATTOO RE K86 TATTOO LE K86
 BREEDER & OWNER: OLDHAM JAMES CURTIS
 260 GREEN SLOPES RD
 IMLER PA 16655

SELLING OPEN

PA: +879M -.05% +30F +92\$ -.01% +28P +106P\$ +110CY\$
 PTAT +1.0
 ST SR DF BD FA RL RA TW
 +1.1 +0.4 +0.4 +0.5 S0.3 0.0 L0.1 +0.5
 FU RW RH TP TL UC UD
 +0.0 +0.4 +0.4 C0.2 +0.1 +0.4 S0.1

RIPLEY FARMS HOT SHOT BRYANT-ET 000604274 (014G0291)

PA: +1614M -.12% +52F +165\$ -.01% +53P +196P\$ +205CY\$
 PTAT +1.3
 ST SR DF BD FA RL RA TW
 +1.9 +0.4 +2.2 +0.7 S0.6 S0.2 H0.5 -0.1
 FU RW RH TP TL UC UD
 -0.1 +1.3 +1.2 C0.1 -0.9 +0.4 S0.1

HI FIELD DIPLOMAT DUCKY 003038532

PA: +145M +.02% +9F +18\$ -.02% +3P +17P\$ +15CY\$
 PTAT +0.7
 ST SR DF BD FA RL RA TW
 +2.2 +0.9 +0.8 +1.1 S0.5 0.0 L0.3 +0.9
 FU RW RH TP TL UC UD
 +0.1 +0.8 +0.8 C0.4 +0.2 +0.7 S0.2

GREEN SLOPES DUCKY DANDY
 1ST INT. CALF NJS-HARRISBURG 2001

MYRTLEDALES MAGIC HOT SHOT-ET 000602097 (001G0381)

02/03 USDA PTA +1569M -0.13% +48F +159\$ +172CY\$ 94% REL
 PROT -0.05% +43P +173P\$ 95% REL
 AGA 02-03 PTAT +0.4 93% REL PTI +179

LAESCHLAND PERFECT BLISS-ET 003024141 92 @ 4-07

02/03 USDA PTA +1659M -0.11% +55F +171\$ +238CY\$ 68% REL
 PROT +0.04% +62P +219P\$ 99%ILE P\$
 2 REC YD +6763M +269F +735\$ +244P +913P\$ +978CY\$
 3 APP 02-03 PTAT +2.1 67% REL CPI +306
 3-08 365D 2X 35220M* 3.9% 1382F* 3.6% 1253P* DHIR

BIG SPRING FAYS DIPLOMAT 040020074

02/02 USDA PTA +386M +0.03% +22F +47\$ +61CY\$ 88% REL
 PROT +0.01% +14P +58P\$ 88% REL
 AGA 08-02 PTAT +1.0 65% REL PTI +91

HI FIELD JASPER DAWN-TWIN 003013997 85 @ 6-07

02/03 USDA PTA -97M 0.0% -4F -11\$ -32CY\$ 34% REL
 PROT -0.04% -9P -24P\$ 15%ILE P\$
 AGA 11-02 PTAT +0.4 42% REL CPI -9

HI FIELD BALDWIN TAYLOR PTA +6\$ 88 @ 4-04
 HI FIELD BOSSMAN SAMMY 85 @ 3-03

LOT# 09 \$ 1,150

WABANAKI PENROSE STAR SASSY 003078920

BORN: 10-25-02 TATTOO LE W20Y
BREEDER: SOMERS JENNIFER
ROSEVILLE MN 55113
OWNER: SELTSAM DIANA
285 WEST ELM ST
PEMBROKE MA 02359

SELLING OPEN

PA: +846M -0.03% +33F +91\$ +.01% +29P +110P\$ +117CY\$
PTAT +0.6
ST SR DF BD FA RL RA TW
-0.4 -0.3 +0.6 -0.2 S0.2 P0.3 H0.5 0.0
FU RW RH TP TL UC UD
-0.3 +0.7 +0.5 W0.3 +0.6 -0.2 D0.6

TROTACRE MR LUCK PENROSE-ET 000604214 (014G0290)
PA: +1291M -.12% +37F +128\$ -.05% +35P +139P\$ +138CY\$
PTAT +0.1
ST SR DF BD FA RL RA TW
+1.9 +0.3 +1.9 +0.5 S0.3 P1.1 H0.4 0.0
FU RW RH TP TL UC UD
-1.7 -0.3 +0.7 C0.5 -0.2 -0.5 D1.4

WABANAKI FANCY STAR SPORADIC 003057999 84 @ 2-10
02/03 USDA PTA +401M +0.07% +29F +54\$ +96CY\$ 49% REL
PROT +0.06% +23P +82P\$ 74%ILE P\$
02/03 USDA PPA +602M +58F +93\$ +36P +137P\$ +160CY\$
2 REC YD +673M +67F +105\$ +41P +156P\$ +183CY\$
1 APP 02-03 PTAT +1.0 50% REL CPI +136
2-06 305D 2X 13800M 4.7% 652F 3.5% 482P DHI
ST SR BD DF RA TW RL FA FU RH RW UC UD TP TL
13 20 31 35 26 22 20 33 29 36 31 27 29 26 33

TROTACRE JAY MR LUCK-ET 000602750 (029G0944)
02/03 USDA PTA +1735M -0.19% +44F +168\$ +197CY\$ 89% REL
PROT -0.03% +52P +193P\$ 89% REL
AGA 02-03 PTAT -0.5 89% REL PTI +168

SHERMA PERFECTO ROSIE POSIE 003021054 87 @ 3-11
02/03 USDA PTA +847M -0.05% +29F +88\$ +79CY\$ 55% REL
PROT -0.06% +18P +85P\$ 86%ILE P\$
02/03 USDA PPA +2228M +69F +226\$ +51P +226P\$ +213CY\$
1 REC YD +3487M +104F +351\$ +87P +365P\$ +353CY\$
1 APP 02-03 PTAT +0.7 54% REL
2-07 330D 2X 16280M 4.1% 664F 3.3% 538P DHIR

JIMCO PANSYS FANCY-ET 000601359 (001G0360)
02/03 USDA PTA +371M +0.06% +26F +49\$ +93CY\$ 95% REL
PROT +0.07% +23P +78P\$ 95% REL
AGA 02-03 PTAT +1.1 95% REL PTI +120

WABANAKI JAY STAR SUSPENSE 003046067 82 @ 5-01
02/03 USDA PTA +482M +0.05% +29F +60\$ +102CY\$ 58% REL
PROT +0.06% +25P +88P\$ 71%ILE P\$
02/03 USDA PPA +2688M +123F +305\$ +107P +396P\$ +434CY\$
4 REC YD +1945M +86F +218\$ +79P +287P\$ +316CY\$
3 APP 02-03 PTAT +0.2 60% REL CPI +108
2-02 358D 2X 18300M 4.4% 805F 3.7% 678P DHIR
3-04 305D 2X 17860M 4.5% 806F 3.6% 646P DHI
4-04 305D 2X 20300M 4.5% 917F 3.5% 715P DHI

LOT# 10 \$ 1,125

RIPLEY FARMS BLAZE LYNN 003080192

BORN: 07-10-02 TATTOO RE R182TATTOO LE R1827
BREEDER & OWNER: RIPLEY THOMAS
RIPLEY FARMS
RD 3 EATON RD
MORAVIA NY 13118

SELLING OPEN

PA: +903M +.03% +44F +105\$ 0.0% +31P +125P\$ +131CY\$
PTAT +0.6

RIPLEY FARMS HOT SHOT BLAZE-ET 000604350
PA: +1614M -.12% +52F +165\$ -.01% +53P +196P\$ +205CY\$
PTAT +1.3
ST SR DF BD FA RL RA TW
+1.9 +0.4 +2.2 +0.7 S0.6 S0.2 H0.5 -0.1
FU RW RH TP TL UC UD
-0.1 +1.3 +1.2 C0.1 -0.9 +0.4 S0.1

MYRTLEDALES MAGIC HOT SHOT-ET 000602097 (001G0381)
02/03 USDA PTA +1569M -0.13% +48F +159\$ +172CY\$ 94% REL
PROT -0.05% +43P +173P\$ 95% REL
AGA 02-03 PTAT +0.4 93% REL PTI +179

LAESCHLAND PERFECT BLISS-ET 003024141 92 @ 4-07
02/03 USDA PTA +1659M -0.11% +55F +171\$ +238CY\$ 68% REL
PROT +0.04% +62P +219P\$ 99%ILE P\$
2 REC YD +6763M +269F +735\$ +244P +913P\$ +978CY\$
3 APP 02-03 PTAT +2.1 67% REL CPI +306
3-08 365D 2X 35220M* 3.9% 1382F* 3.6% 1253P* DHIR

RIPLEY FARMS SONIC LOGO 003063574
02/03 USDA PTA +191M +0.18% +37F +44\$ +58CY\$ 38% REL
PROT +0.01% +9P +54P\$ 77%ILE P\$
02/03 USDA PPA +773M +89F +131\$ +31P +157P\$ +168CY\$
1 REC YD -1978M +48F -114\$ -25P -73P\$ -37CY\$

RIPLEY FARMS GOLIATH SONIC 000603137
02/03 USDA PTA +575M +0.05% +34F +71\$ +90CY\$ 55% REL
PROT +0.01% +20P +85P\$ 55% REL
AGA 02-03 PTAT 0.0 68% REL PTI +97

RIPLEY FARMS HARLEY LACEY 003051794 76 @ 4-01
08/02 USDA PTA +462M +0.17% +47F +73\$ +65CY\$ 50% REL
PROT -0.04% +9P +70P\$ 85%ILE P\$
08/02 USDA PPA +934M +116F +165\$ +15P +152P\$ +139CY\$
2 REC YD +1613M +130F +228\$ +36P +226P\$ +215CY\$
2 APP 02-03 PTAT -0.6 54% REL CPI +70
2-03 305D 3X 17810M 5.1% 904F 3.3% 581P DHI
3-11 305D 3X 18390M 4.8% 877F 3.0% 544P DHI

LOT# 11 \$ 700

GR-KAS KNOLL MIKES DELIGHT

003080311

BORN: 06-29-02 TATTOO LE C105
BREEDER & OWNER: CRAFT GEORGE G
5145 STALEYVILLE RD
SHARON SPRINGS NY 13459

SELLING OPEN

KAS KNOLL HS MIKE 000604559
PA: +625M -.08% +16F +60\$ -.04% +14P +60P\$ +56CY\$
PTAT +0.6
ST SR DF BD FA RL RA TW
+2.0 +0.3 +1.6 +0.6 S0.3 P0.5 L0.2 -0.1
FU RW RH TP TL UC UD
-0.6 +0.5 +0.7 W0.5 -1.4 -0.2 D0.1

PR-KAS KNOLL JB DAPHNE 376010929

MYRTLEDALES MAGIC HOT SHOT-ET 000602097 (001G0381)
02/03 USDA PTA +1569M -0.13% +48F +159\$ +172CY\$ 94% REL
PROT -0.05% +43P +173P\$ 95% REL
AGA 02-03 PTAT +0.4 93% REL PTI +179

THREE LEDGES FAYETTE MISSEDOUT 002983531 88 @ 9-08
02/03 USDA PTA -319M -0.02% -17F -38\$ -61CY\$ 58% REL
PROT -0.03% -15P -53P\$ 05%ILE P\$
3 REC YD -821M -37F -93\$ -41P -137P\$ -158CY\$
2 APP 02-03 PTAT +0.8 57% REL CPI -27
8-02 365D 2X 17220M 4.7% 810F 3.5% 598P DHIR

ROYAL ACRES ENHANCER JB 000603423 (001G0405)
02/03 USDA PTA +1448M -0.03% +59F +158\$ +187CY\$ 75% REL
PROT -0.02% +45P +182P\$ 75% REL
AGA 02-03 PTAT +2.1 73% REL PTI +246

GT-KAS KNOLL DJ DAPHNE 365011420

LOT# 12 \$ 925

GREEN SLOPES BRYANT DELORIS

003080469

BORN: 12-06-02 TATTOO RE K85 TATTOO LE K85
BREEDER & OWNER: OLDHAM JOEY
260 GREEN SLOPES RD
IMLER PA 16655

SELLING OPEN

RIPLEY FARMS HOT SHOT BRYANT-ET 000604274 (014G0291)
PA: +1614M -.12% +52F +165\$ -.01% +53P +196P\$ +205CY\$
PTAT +1.3
ST SR DF BD FA RL RA TW
+1.9 +0.4 +2.2 +0.7 S0.6 S0.2 H0.5 -0.1
FU RW RH TP TL UC UD
-0.1 +1.3 +1.2 C0.1 -0.9 +0.4 S0.1

GREEN SLOPES DOPEY DOLLY 003072187

MYRTLEDALES MAGIC HOT SHOT-ET 000602097 (001G0381)
02/03 USDA PTA +1569M -0.13% +48F +159\$ +172CY\$ 94% REL
PROT -0.05% +43P +173P\$ 95% REL
AGA 02-03 PTAT +0.4 93% REL PTI +179

LAESCHLAND PERFECT BLISS-ET 003024141 92 @ 4-07
02/03 USDA PTA +1659M -0.11% +55F +171\$ +238CY\$ 68% REL
PROT +0.04% +62P +219P\$ 99%ILE P\$
2 REC YD +6763M +269F +735\$ +244P +913P\$ +978CY\$
3 APP 02-03 PTAT +2.1 67% REL CPI +306
3-08 365D 2X 35220M* 3.9% 1382F* 3.6% 1253P* DHIR

SNIDERS MAGIC RAINCHECK 000603266
PA: +336M -.06% +5F +30\$ -.01% +9P +31P\$ +30CY\$
PTAT +0.3

HI FIELD JAY DOPEY 003040950
2ND AGED DRY COW ALL-AMERICAN DAIRY SHOW 2002

LOT# 13 \$ 650

RIPLEY FARMS BREIGHTON CAROL

003080226

BORN: 12-27-02 TATTOO RE R190TATTOO LE R1903
BREEDER & OWNER: RIPLEY DANIEL
1139 CUTLER SCHOOLHOUSE RD
CORTLAND NY 13045

SELLING OPEN

LAESCHLAND NPK BREIGHTON-ET 000600400 (007G0297)
02/03 USDA PTA +1100M -0.26% +6F +89\$ +63CY\$ 96% REL
PROT -0.1% +19P +77P\$ 96% REL
AGA 02-03 PTAT +0.4 95% REL PTI +61
ST SR DF BD FA RL RA TW
+3.3 +2.8 +2.3 +3.4 L1.2 S2.5 L0.6 +2.6
FU RW RH TP TL UC UD
-1.7 +0.6 +2.8 C0.2 +0.6 -0.2 D3.5

GLENVILLE DALLAS CAIRE 003068495 75 @ 3-11
2 APP 02-03 PTAT -1.1 49% REL

CLEARBRANCH JEANS N P KING-ET 000596262 (029G0846)
02/03 USDA PTA -321M +0.08% -3F -27\$ -37CY\$ 99% REL
PROT 0.0% -11P -34P\$ 99% REL
AGA 02-03 PTAT -0.7 98% REL PTI-47

LAESCHLAND TS BIDDY 002845925 94 @ 9-10
11/02 USDA PTA +366M -0.05% +8F +35\$ +63CY\$ 88% REL
PROT +0.04% +18P +54P\$ 33%ILE P\$
11/02 USDA PPA +1426M +72F +167\$ +99P +300P\$ +370CY\$
4 REC YD +771M +37F +89\$ +58P +170P\$ +213CY\$
4 APP 02-03 PTAT +1.0 81% REL CPI +78
9-03 365D 2X 28930M 4.5% 1298F 3.4% 995P DHIR

RIPLEY FARMS DALLAS-ET 000595785 ()
02/03 USDA PTA -516M -0.09% -36F -68\$ -101CY\$ 92% REL
PROT -0.04% -23P -91P\$ 92% REL
AGA 02-03 PTAT -0.7 80% REL PTI -125

GLENVILLE VICTOR CAIRE 000199577 GP-83 (CAN)
2-04 305D 2X 11847M 5.7% 671F 4.0% 477P CAN
3-11 305D 2X 11809M 5.8% 686F 4.0% 471P CAN

LOT# 14 \$ 525

PECAR RADAR SMOOTHIE

003080585

BORN: 03-14-03 TATTOO LE C497
BREEDER & OWNER: CARGILE CHARLES R
PECAR GUERNSEY FARM
3919 GULLY ROAD
SKANEATELES NY 13152

SELLING OPEN

PA: -375M +.11% OF -29\$ +.02% -10P -30P\$ -29CY\$
PTAT 0.0

PECAR KING KONG RADAR 000604073

PA: -133M +.21% +26F +10\$ +.02% -2P +12P\$ +14CY\$
PTAT 0.0
ST SR DF BD FA RL RA TW
-1.0 -0.8 -0.3 -1.0 S0.1 S0.1 H0.6 -0.9
FU RW RH TP TL UC UD
+0.5 +0.2 -0.5 C0.1 -2.0 -0.4 S0.8

PECAR CRAIG VERNA 003053554

02/03 USDA PTA -617M +0.02% -25F -67\$ -73CY\$ 45% REL
PROT +0.02% -17P -73P\$ 07%ILE P\$
02/03 USDA PPA -1473M -58F -160\$ -30P -152P\$ -139CY\$
3 REC YD -1341M -56F -148\$ -31P -148P\$ -141CY\$
4-07 302D 2X 10990M 4.1% 455F 3.5% 380P DHI

KNAPPS GOLIATH KING KONG 000603517 (001G0406)
02/03 USDA PTA -69M +0.34% +49F +34\$ +52CY\$ 74% REL
PROT +0.04% +4P +45P\$ 74% REL
AGA 02-03 PTAT 0.0 70% REL PTI +86

PECAR TUCKER SHEEBA 003028019
02/03 USDA PTA -197M +0.07% +2F -14\$ -23CY\$ 50% REL
PROT -0.01% -8P -21P\$ 12%ILE P\$
02/03 USDA PPA -371M +11F -20\$ -14P -31P\$ -35CY\$
5 REC YD -382M +7F -24\$ -13P -32P\$ -35CY\$
AGA 05-97 PTAT 0.0 0% REL / PTI -65 0% REL

PECAR THUNDER CRAIG 000602793
02/03 USDA PTA -636M +0.03% -24F -68\$ -78CY\$ 46% REL
PROT +0.01% -19P -77P\$ 46% REL

PECAR TELEX VIVIE 002988207
02/03 USDA PTA -530M +0.01% -23F -59\$ -65CY\$ 48% REL
PROT +0.01% -15P -65P\$ 12%ILE P\$
4-11 294D 2X 9450M 5.0% 477F 3.6% 337P DHIR

LOT# 15 \$ 775

PINEDUST JB NINA

003077825

BORN: 06-01-02 TATTOO LE P25
BREEDER & OWNER: ST PIERRE DANIEL
82 OLD PINE HILL RD N
BERWICK ME 03901

SELLING OPEN

PA: +1168M -.11% +33F +116\$ -.04% +31P +125P\$ +123CY\$
PTAT +1.2
ST SR DF BD FA RL RA TW
+0.6 +0.2 +2.4 +1.0 L0.2 S0.4 H0.0 +0.4
FU RW RH TP TL UC UD
-0.7 +1.9 +2.2 C1.1 +0.1 +0.6 D1.9

ROYAL ACRES ENHANCER JB 000603423 (001G0405)
02/03 USDA PTA +1448M -0.03% +59F +158\$ +187CY\$ 75% REL
PROT -0.02% +45P +182P\$ 75% REL
AGA 02-03 PTAT +2.1 73% REL PTI +246
ST SR DF BD FA RL RA TW
+1.4 +0.3 +3.6 +1.6 L0.3 S0.5 H0.4 +0.7
FU RW RH TP TL UC UD
-0.5 +3.0 +3.2 C1.5 -1.0 +1.2 D1.8

SHERMA VICTORY ELLAS ENHANCER 000600510 (029G0918)
02/03 USDA PTA +1425M -0.05% +55F +153\$ +136CY\$ 97% REL
PROT -0.1% +30P +148P\$ 97% REL
AGA 02-03 PTAT +2.1 97% REL PTI +207

ROYAL ACRES PENDER JESSICA-ET 003027561 87 @ 2-10
02/03 USDA PTA +632M -0.03% +24F +68\$ +82CY\$ 60% REL
PROT 0.0% +20P +79P\$ 50%ILE P\$
1 REC YD +379M -177F -112\$ -3P -136P\$ -152CY\$
2 APP 02-03 PTAT +1.7 62% REL CPI +150
2-01 305D 2X 22050M 3.3% 736F 3.2% 696P DHIA

LONGMEDO PENDER VELOUR-ET 000601747 (014G0253)
02/03 USDA PTA +1988M -0.4% +18F +167\$ +118CY\$ 95% REL
PROT -0.18% +34P +144P\$ 95% REL
AGA 02-03 PTAT +0.3 95% REL PTI +110

PINEDUST VEL NIAGRA 003058721
PA: +889M -.18% +7F +74\$ -.07% +17P +67P\$ +58CY\$
PTAT +0.4
ST SR DF BD FA RL RA TW
-0.3 +0.2 +1.2 +0.3 L0.1 S0.3 L0.4 +0.1
FU RW RH TP TL UC UD
-0.8 +0.8 +1.2 C0.7 +1.1 +0.0 D1.9

WHEATLAND PERFECTO NANCY 003033193
PA: -211M +.04% -4F -19\$ +.05% 0P -10P\$ -3CY\$
PTAT +0.4

THIRD DAM: WHEATLAND TED NAOMI 85 @ 9-08
LIFETIME: 101,790M 5.1% 5,178F 3.6% 3,713P
FOURTH DAM: WHEATLAND FABIAN NIBBS 82 @ 3-02

LOT# 16 \$ 1,200

BORN: 06-15-02
BREEDER & OWNER: BEYNON ROBERT
MAPLE ONTARIO

MAPLEHURST HOPEFULS GOLDEN 010032764
YOUNG SIRE AT SEMEX

BROADVIEW HILDA 2 10028354 GP-84 (CAN)
2-04 305D 2X 14102M 4.5% 640F 3.5% 497P CAN

LOT# 17 \$ 1,450

BORN: 11-03-00
BREEDER & OWNER: BROWN FRED J
BROWN EDEN FARM
WALKERTON ONTARIO

KNAPPS ENHANCER KRUNCH-ET 000603690 (200G0400)
PA: +947M +.06% +50F +113\$ -.05% +23P +115P\$ +111CY\$
PTAT +0.7
ST SR DF BD FA RL RA TW
-0.6 -0.7 +1.7 -0.6 L0.3 0.0 L1.9 -0.3
FU RW RH TP TL UC UD
-0.8 +1.9 +1.8 C0.2 -2.0 +0.3 D1.3

BROWNEDENG CURTSY 10033677

THIRD DAM: BROWN EDEN ALSTARS CHRISTA VG-87(CAN)

FOURTH DAM: BROWN EDEN FAYVOR CHRISTA EX-91(CAN)

FIFTH DAM: BROWN EDEN LEADER GALAXY VG-89 (CAN)

SIXTH DAM: KEL LEA NEPTUNE MYRTLE VG-88(CAN)

LOT# 18 \$ 2,400

BORN: 04-15-02
BREEDER & OWNER: EBY JAMES
EBY MANOR LTD
WATERLOO ONTARIO

EBY MANOR BILLBOARD IVAN 040020253
AGA 02-03 PTAT +0.9 45% REL
ST SR DF BD FA RL RA TW
+1.5 +1.3 -0.1 +1.1 S0.3 P1.4 L2.0 +1.4
FU RW RH TP TL UC UD
+1.2 +0.9 +0.9 W0.1 +1.3 -1.0 S0.4

EBY MANOR WARDEN NEEMA 10024839 GP-82(CAN)
2-02 305D 2X 14190M 5.1% 717F 3.5% 497P CAN
3-02 298D 2X 15983M 4.9% 777F 3.6% 570P CAN

BROADVIEW MOODY 8280343

SELLING OPEN

ROZELYN PAT MAR P GOLIATH-ET 000600974 (007G0302)
02/03 USDA PTA +224M +0.22% +44F +52\$ +73CY\$ 99% REL
PROT +0.03% +12P +66P\$ 92% REL
AGA 02-03 PTAT -0.1 99% REL PTI +93

MAPLEHURST HOPEFUL 040199758 EX-95(CAN)
4-11 305D 2X 25793M 3.4% 880F 3.4% 876P CAN

BIG SPRING FAYS DIPLOMAT 040020074
02/02 USDA PTA +386M +0.03% +22F +47\$ +61CY\$ 88% REL
PROT +0.01% +14P +58P\$ 88% REL
AGA 02-03 PTAT +1.2 66% REL PTI +97

BROADVIEW ECLIPSE 200935 GP-83(CAN)
2-04 289D 2X 91769M 5.3% 482F 3.9% 359P CAN
3-05 302D 2X 10377M 5.2% 537F 3.8% 398P CAN

BROWN EDEN K CHRIS 9064221

SELLING FRESH & OPEN

SHERMA VICTORY ELLAS ENHANCER 000600510 (029G0918)
02/03 USDA PTA +1425M -0.05% +55F +153\$ +136CY\$ 97% REL
PROT -0.1% +30P +148P\$ 97% REL
AGA 02-03 PTAT +2.1 97% REL PTI +169

BEAVER CREEK MAGIC KANDY 003021142 90 @ 4-04
02/03 USDA PTA +469M +0.16% +45F +72\$ +86CY\$ 77% REL
PROT 0.0% +16P +83P\$ 85% ILE P\$
4 REC YD +987M +112F +165\$ +37P +194P\$ +205CY\$
3 APP 02-03 PTAT -0.8 71% REL CPI +73
3-01 365D 2X 29320M* 4.9% 1440F* 3.8% 1106P* DHIR

LAND OF LIVING P GARRETT-ET 000603126
02/03 USDA PTA +43M -0.03% -3F +1\$ +10CY\$ 43% REL
PROT +0.02% +4P +7P\$ 43% REL
AGA 02-03 PTAT +1.3 64% REL PTI +38

BROWN EDEN E CHRISTA 99685 GP-83(CAN)
2-00 305D 2X 13268M 4.4% 585F 3.7% 488P CAN
3-03 305D 2X 16645M 4.2% 700F 3.6% 594P CAN

EBY MANOR IVAN NANCY 8665204

SELLING OPEN
JOHNES VACCINATE

OLYMPIC VIEW F BILLBOARD-ET 000599229
02/03 USDA PTA -26M -0.13% -22F -20\$ -18CY\$ 92% REL
PROT +0.01% 0P -18P\$ 92% REL
AGA 02-03 PTAT +1.3 80% REL PTI -1

EBY MANOR E M C INEZ 040193762 VG-88(CAN)
5-10 305D 2X 21109M 5.9% 1240F 3.8% 792P CAN

EBY MANOR BUTTERMOST WARDEN 040020223
02/02 USDA PTA -192M +0.23% +27F +7\$ +32CY\$ 85% REL
PROT +0.06% +3P +22P\$ 85% REL
AGA 02-03 PTAT -0.9 47% REL PTI +25

EBY MANOR BILLBOARD NAOMI 201173 G-75(CAN)
2-01 238D 2X 8551M 4.6% 392F 3.4% 290P CAN

LOT# 19 \$ 875

PECAR RON FROSTING

003080584

BORN: 12-01-02 TATTOO LE C492
BREEDER & OWNER: CARGILE CHARLES R
PECAR GUERNSEY FARM
3919 GULLY ROAD
SKANEATELES NY 13152

SELLING OPEN

PA: +700M -.01% +31F +78\$ -.03% +19P +84P\$ +83CY\$
PTAT +0.4
ST SR DF BD FA RL RA TW
-0.1 +0.2 +0.6 0.0 S0.4 P0.3 H1.1 -0.1
FU RW RH TP TL UC UD
+0.1 +0.3 +0.5 C0.8 -0.5 +0.3 D0.1

MARODORE GOLIATHS RONALD-ET 000603218 (001G0210)
02/03 USDA PTA +1280M +0.02% +60F +146\$ +163CY\$ 74% REL
PROT -0.03% +37P +162P\$ 75% REL
AGA 02-03 PTAT +0.8 77% REL PTI +196
ST SR DF BD FA RL RA TW
-0.1 +0.4 +1.2 0.0 S0.7 P0.5 H2.1 -0.1
FU RW RH TP TL UC UD
+0.1 +0.5 +0.9 C1.5 -0.9 +0.6 D0.1

PECAR SALUTE SPRINKLES 003060249
02/03 USDA PTA +119M -0.03% +1F +10\$ +4CY\$ 42% REL
PROT -0.02% +1P +6P\$ 21%ILE P\$
02/03 USDA PPA -262M -6F -25\$ -6P -25P\$ -23CY\$
2 REC YD -741M -13F -67\$ -12P -57P\$ -47CY\$
3-00 305D 2X 11360M 4.6% 518F 3.4% 382P DHI

ROZELYN PAT MAR P GOLIATH-ET 000600974 (007G0302)
02/03 USDA PTA +224M +0.22% +44F +52\$ +73CY\$ 99% REL
PROT +0.03% +12P +66P\$ 99% REL
AGA 02-03 PTAT -0.1 99% REL PTI +93

MARODORE PENDERS RONETTE 003000058 91 @ 3-10
02/03 USDA PTA +1538M -0.18% +38F +149\$ +145CY\$ 84% REL
PROT -0.08% +37P +152P\$ 86%ILE P\$
02/03 USDA PPA +4444M +69F +396\$ +95P +383P\$ +348CY\$
3 REC YD +3525M +76F +332\$ +82P +334P\$ +314CY\$
2 APP 02-03 PTAT +0.9 76% REL CPI +176
2-05 305D 2X 23460M* 3.8% 894F 3.1% 734P DHIA

WALNUT HILL ENHANCER SALUTE-ET 000603136 (001G0209)
02/03 USDA PTA +896M -0.12% +20F +85\$ +55CY\$ 80% REL
PROT -0.1% +13P +70P\$ 80% REL
AGA 02-03 PTAT +0.3 78% REL PTI +68

PECAR ENCORE FROSTING 003024884 77 @ 2-09
02/03 USDA PTA -626M +0.08% -16F -61\$ -56CY\$ 50% REL
PROT +0.05% -14P -60P\$ 07%ILE P\$
02/03 USDA PPA -2297M -41F -209\$ -52P -208P\$ -193CY\$
3 REC YD -2280M -41F -208\$ -52P -207P\$ -194CY\$
1 APP 02-03 PTAT -0.1 39% REL CPI -60

LOT# 20 \$ 700

RIPLEY FARMS BLAZE TAMAR

003080193

BORN: 07-12-02 TATTOO RE R182TATTOO LE R1828
BREEDER & OWNER: RIPLEY ROLAND
RIPLEY FARM
1308 RT 41A
CORTLAND NY 13045

SELLING OPEN

PA: +813M -.03% +32F +88\$ +.02% +30P +110P\$ +118CY\$
PTAT +0.6

RIPLEY FARMS HOT SHOT BLAZE-ET 000604350
PA: +1614M -.12% +52F +165\$ -.01% +53P +196P\$ +205CY\$
PTAT +1.3
ST SR DF BD FA RL RA TW
+1.9 +0.4 +2.2 +0.7 S0.6 S0.2 H0.5 -0.1
FU RW RH TP TL UC UD
-0.1 +1.3 +1.2 C0.1 -0.9 +0.4 S0.1

MYRTLEDALES MAGIC HOT SHOT-ET 000602097 (001G0381)
02/03 USDA PTA +1569M -0.13% +48F +159\$ +172CY\$ 94% REL
PROT -0.05% +43P +173P\$ 95% REL
AGA 02-03 PTAT +0.4 93% REL PTI +179

LAESCHLAND PERFECT BLISS-ET 003024141 92 @ 4-07
02/03 USDA PTA +1659M -0.11% +55F +171\$ +238CY\$ 68% REL
PROT +0.04% +62P +219P\$ 99%ILE P\$
2 REC YD +6763M +269F +735\$ +244P +913P\$ +978CY\$
3 APP 02-03 PTAT +2.1 67% REL CPI +306
3-08 365D 2X 35220M* 3.9% 1382F* 3.6% 1253P* DHIR

TAG LANE BUTTERMOST SABER 000601734 (009G0125)
02/03 USDA PTA +542M +0.09% +39F +73\$ +110CY\$ 96% REL
PROT +0.05% +25P +98P\$ 96% REL
AGA 02-03 PTAT -0.6 96% REL PTI +100

RIPLEY FARMS SABER TOPAZ 003066927
02/03 USDA PTA +12M +0.07% +12F +11\$ +32CY\$ 46% REL
PROT +0.04% +7P +24P\$ 38%ILE P\$
02/03 USDA PPA -1315M -4F -104\$ -16P -76P\$ -51CY\$
1 REC YD -2614M +8F -194\$ -28P -131P\$ -77CY\$

RIPLEY FARMS JULIUS TEEPEE 003039647 77 @ 4-00
02/03 USDA PTA +79M -0.1% -11F -3\$ -12CY\$ 53% REL
PROT -0.02% -1P -8P\$ 15%ILE P\$
3 REC YD +1550M -5F +115\$ +39P +122P\$ +117CY\$
2 APP 02-03 PTAT -0.4 51% REL CPI -36
2-08 305D 3X 15670M 4.7% 743F 3.5% 551P DHIA
3-09 305D 3X 20730M 3.5% 722F 3.3% 679P DHI

LOT# 21 \$ __1,800_ COMFORT FARMS DARIA

8508364

BORN: 12-12-01

BREEDER & OWNER: COMFORT FARM, ST ANNS, ONTARIO

SIRE: LANTZ FARM SENTRY VISA