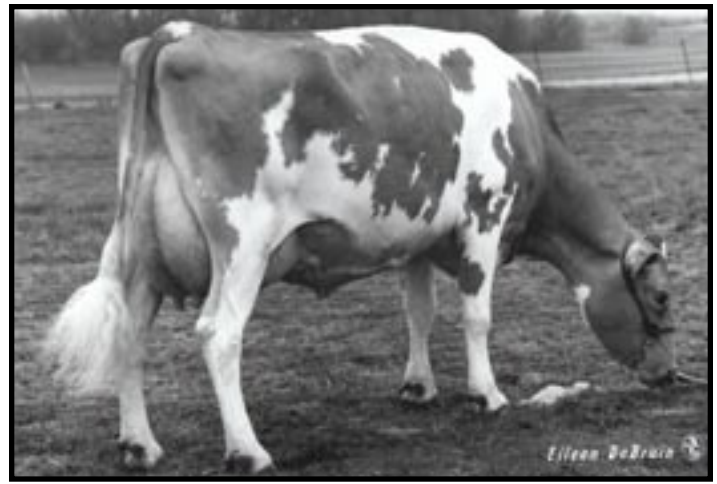




Lone Acres Magic Bonita

2-04 365D 20,380M 4.4% 890F 3.8% 773P
Granddam of Lot 56



Lone Acres Pender Briea-ET EX-90

3-04 365D 24,880M 4.2% 1,048F 3.7% 910P
Third Dam of Lot 56

LOT 56 LONE ACRES TILLER BLAIR 000003084866

Born: 01-22-2004 Tattoo LE K246 RE K246

Breeder & Owner: MARETH K KIPP

PO BOX 291

NORTH PRAIRIE WI 53153

262-893-5910

BRED: 09-27-05 DUE: 07-09-06

20213 BIG SPRING ROGER

SR 2-YEAR-OLD

PA: +461M +0.03% +26F -0.03% +10P +129CM\$ +136NM\$
PTAT +1.9 PTI +113
ST SR BD DF RA TW RL FA
+2.1 +1.3 +1.3 +1.6 H1.6 +1.7 P0.1 S0.8
FU RH RW UC UD TP TL
1.6 +2.1 +1.7 +0.5 S0.6 C1.3 +0.1

TROTACRE LORAL TILLER-ET 000000603341 (007GU00360)

02/06 USDA PTA +1077M -0.02% +44F +192NM\$ 52NM%ile
-0.06% +25P +179CM\$ 92% Rel
AGA 02/06 PTAT +2.6 89% Rel PTI +192
ST SR BD DF RA TW RL FA
+3.7 +2.5 +2.9 +2.6 H1.7 +3.3 P0.3 S0.9
FU RH RW UC UD TP TL
+1.7 +2.5 +2.9 +0.8 D0.1 C1.7 +0.6

LONE ACRES G BEAUTY 000003060588

02/06 USDA PTA -156M +0.08% +7F +79NM\$ 61NM%ile
+0.00% -5P +79CM\$ 58% Rel
4 Rec YDev: +746M +70F +19P
4 App 02/06 PTAT +1.1 55% Rel CPI +29
Appraisal: 88 @ 5-11 (88/75)
ST SR BD DF RA TW RL FA FU RH RW UC UD TP TL
37 36 35 36 23 24 36 19 38 40 33 20 28 28 31
2-07 341D 2X 17000M 4.6% 786F 3.3% 557P DHIA
3-07 305D 2X 17980M 4.8% 867F 3.2% 579P 92
4-09 305D 2X 17960M 4.9% 878F 3.2% 570P 90

LONE ACRES DYNASTY BRITTA 83 @ 3-03 (86/76)
2-03 305D 2X 14330M 4.3% 619F 3.0% 432P 93

THIRD DAM: LONE ACRES PENDER BRIEA-ET 000003009071

Appraisal: 87 @ 4-07

Gold Star Dam - 1997

3-04 365D 2X 24880M 4.2% 1048F 3.7% 910P DHIA
5-03 305D 2X 23370M 4.1% 959F 3.5% 818P DHIR

TROTACRE MERCURY LORAL-ET 000000602121 (007GU00322)

02/06 USDA PTA -115M -0.01% -7F -126NM\$ 0NM%ile
-0.01% -5P -129CM\$ 97% Rel
AGA 02/06 PTAT +1.4 96% Rel PTI +15

GREENWOOD M TILLIE-ET 000003013942

02/06 USDA PTA +997M -0.09% +29F +135NM\$ 77NM%ile
-0.06% +23P +122CM\$ 72% Rel
2 Rec YDev: +4035M +121F +106P
2 App 02/06 PTAT +1.3 63% Rel CPI +130
Appraisal: 90 @ 3-03
2-01 365D 2X 31730M* 4.1% 1290F* 3.1% 980P* DHIA

LAND OF LIVING P GARRETT-ET 000000603126

05/04 USDA PTA -600M +0.09% -13F +67NM\$ 9NM%ile
+0.04% -14P +75CM\$ 79% Rel
AGA 05/04 PTAT +1.4 64% Rel PTI -14

LONE ACRES MAGIC BONITA 000003027035

02/06 USDA PTA +420M -0.01% +18F +158NM\$ 82NM%ile
+0.02% +18P +168CM\$ 65% Rel
3 Rec YDev: +1645M +65F +75P
2 App 02/06 PTAT +0.2 59% Rel CPI +73
Appraisal: 84 @ 6-03
Gold Star Dam - 1999
2-04 365D 2X 20380M 4.4% 890F 3.8% 773P DHIA
4-03 305D 2X 17860M 4.3% 770F 3.6% 639P DHIR
5-07 305D 2X 18940M 4.3% 820F 3.6% 683P DHIA

LONE ACRES PERFECTO BLAIR 75 @ 2-08
2-02 305D 2X 15330M 4.1% 622F 3.0% 465P DHIA

FOURTH DAM: LONE ACRES FAYETTE BREE 000002926883

Appraisal: 90 @ 4-07

Gold Star Dam - 1991

2-03 365D 2X 21200M 4.3% 917F 3.5% 746P DHIA
4-06 365D 2X 26720M 4.4% 1167F 3.6% 952P* DHIA

FIFTH DAM: WAWASEE MARS BELINDA 000002821725

Appraisal: 88 @ 8-02

7-07 365D 2X 24640M 4.7% 1149F 3.3% 820P DHIA
8-09 365D 2X 24020M 4.7% 1121F 3.3% 795P DHIA
3641D 198690M 4.5% 8936F 3.4% 6813P LIFE