

LOT 12 ADAMS CREEK TILLER SHANIA 000068015617

Born: 12-08-2006 Tattoo LE N600
 Breeder & Owner: STEVEN NUTTLEMAN
 N5725 CO RD DE
 BANGOR WI 54614
 608-486-4573

SELLING OPEN
 WHOLE HERD TESTED NEGATIVE FOR JOHNES IN 2007

WINTER CALF

PA: +481M -0.01% +20F -0.02% +13P +9CM\$ +13N
 PTAT +1.6 PTI +87
 ST SR BD DF RA TW RL FA
 +2.5 +1.2 +1.8 +1.8 H0.9 +1.9 P0.1 S0.4
 FU RH RW UC UD TP TL
 +0.7 +1.6 +1.8 +1.1 S0.3 C0.8 +0.4

TROTACRE LORAL TILLER-ET 000000603341 (007GU00360)

02/07 USDA PTA +896M +0.02% +43F +80NM\$ 30NM%ile
 -0.04% +22P +69CM\$ 96% Rel
 AGA 02/07 PTAT +2.9 95% Rel PTI +164
 ST SR BD DF RA TW RL FA
 +3.9 +2.2 +3.0 +3.0 H1.2 +3.4 P0.3 S0.8
 FU RH RW UC UD TP TL
 +1.6 +2.6 +2.8 +1.3 S0.3 C1.9 +0.4

PRAIRIE CREAM JB SABRINA-ET 000068005055

2-00 15037M 4.6% 719F 3.2% 495P PROJACT

THIRD DAM: SHADY VIEW DF STRAWBERRY 000002859385

Appraisal: 93 @ 10-09
 9-01 365D 2X 21520M 4.3% 927F 3.5% 752P DHIA
 2125D 103,700M 4.5% 4,679F 3.6% 3,751P LIFE
 ALL-AMERICAN AGED COW 1988
 HM ALL-AMERICAN 3-YEAR-OLD 1986
 HER DTR: FOUR WINDS ADM B SILK-ET 93 @ 4-10
 3-06 365D 2X 30820M* 3.9% 1187F 3.1% 955P DHIA
 3X HM ALL-AMERICAN IN MILKING FORM

FOURTH DAM: BUTENSCHOENS P W CHERRY 000002706399

Appraisal: 91 @ 9-09
 6-00 305D 2X 15790M 4.2% 659F DHIA
 1ST AGED COW NGS-LOUISVILLE 1981
 RES GRAND CHAMPION NJS-LOUISVILLE 1981
 HER DTRS: FOUR WINDS B T BLOSSOM 93 @ 8-09
 7-02 365D 2X 24710M 4.3% 1060F 3.6% 878P DHIA
 DAM OF FOUR WINDS MAGICMAN-ET
 FOUR WINDS BT CHARITY 91 @ 6-03
 5-01 365D 2X 23820M 4.3% 1030F 3.6% 867P DHIA

TROTACRE MERCURY LORAL-ET 000000602121 (007GU00322)

02/07 USDA PTA -49M -0.01% -5F -159NM\$ 0NM%ile
 -0.01% -3P -162CM\$ 97% Rel
 AGA 02/07 PTAT +1.5 96% Rel PTI +15

GREENWOOD M TILLIE-ET 000003013942

02/07 USDA PTA +907M -0.07% +27F +43NM\$ 44NM%ile
 -0.05% +21P +28CM\$ 73% Rel
 2 App 02/07 PTAT +1.4 65% Rel CPI +90
 Appraisal: 90 @ 3-03
 2-01 365D 2X 31730M* 4.1% 1290F* 3.1% 980P* DHIA

ROYAL ACRES ENHANCER JB 000000603423 (001GU00405)

02/07 USDA PTA +870M -0.05% +29F -4NM\$ 13NM%ile
 -0.01% +27P -3CM\$ 92% Rel
 AGA 02/07 PTAT +0.8 90% Rel PTI +76

FOUR WINDS PERF SUGAR-ET 000003030603

02/07 USDA PTA -738M -0.02% -36F -106NM\$ 10NM%ile
 +0.03% -19P -98CM\$ 65% Rel
 5 Rec YDev: -1258M -62F -28P
 4 App 02/07 PTAT -0.3 60% Rel CPI -67
 Appraisal: 89 @ 10-01 (87/90)
 2-02 343D 2X 13240M 4.1% 547F 3.4% 456P DHIA
 3-03 335D 2X 16990M 4.1% 691F 3.4% 581P DHIA
 4-04 344D 2X 18080M 4.1% 733F 3.5% 629P DHIA
 5-04 305D 2X 17700M 4.0% 703F 3.5% 628P DHIA
 7-09 305D 2X 14300M 4.2% 596F 2.8% 402P DHIA
 9-06 305D 2X 16520M 4.1% 674F 3.0% 489P 93
 11-02 281D 2X 9370M 4.3% 402F 2.9% 274P 93
 2995D 134710M 4.2% 5595F 3.2% 4357P LIFE

PRAIRIE CREAM RO SUGARAE-ET 84 @ 4-05 (84/82)
 2-02 305D 3X 21590M 4.5% 974F 3.2% 681P DHIA
 PRAIRIE CREAM B OPTION SPLENDA-ET 84 @ 2-07 (83/79)
 PRAIRIE CREAM R O SPICE GIRL-ET 84 @ 2-05 (86/84)
 HER DTR: NOM JR ALL-AMERICAN WINTER CALF 2004
 PRAIRIE CREAM JB SADIE-ET
 2ND WINTER CALF NJS-MADISON 2004



Four Winds Adm B Silk EX-93
 3X HM All-American in Milking Form
 3-06 365D 30,820M 1,187F 955P
 Maternal Sister to Granddam of Lot 12
Prairie Cream JB Sadie-ET
 2nd Winter Calf NJS-Madison 2004
 Full Sister to Dam of Lot 12



LOT 13 GR-MOENS GIBSON LEEZA**000068015531**

Born: 02-04-2007 Tattoo LE M24 RE M24
 Breeder & Owner: LARRY MOEN
 CANOE CREEK GUERNSEYS
 2926 RIVER RD
 DECORAH IA 52101
 563-382-9312

SELLING OPEN

WINTER CALF

PA: +49M -0.02% -1F -0.02% -1P +1CM\$ +7NM\$
 PTAT +0.6 PTI +17
 ST SR BD DF RA TW RL FA
 -0.8 +0.1 -0.4 -0.5 L0.1 +0.6 P0.3 S0.1
 FU RH RW UC UD TP TL
 +0.8 +0.5 +0.7 +0.5 S0.4 C0.4 +0.6

ROLLING PRAIRIE E GIBSON 000068000554

PA: +374M -0.02% +14F -0.03% +7P +121CM\$ +132NM\$
 PTAT +0.8 PTI +55
 ST SR BD DF RA TW RL FA
 -2.4 -1.4 -1.3 +0.2 L0.4 -0.9 P0.4 L0.4
 FU RH RW UC UD TP TL
 +1.0 +1.5 +1.2 +1.2 S0.6 C1.1 -1.7

PR-MOENS LORAL LEE 000376010742

02/07 USDA PTA -276M -0.01% -15F -118NM\$ 9NM%ile
 +0.00% -9P -119CM\$ 57% Rel
 4 Rec YDev: +136M +0F +7P
 2 App 02/07 PTAT +0.3 46% Rel CPI -21
 Appraisal: 81 @ 5-02 (80/77)
 ST SR BD DF RA TW RL FA FU RH RW UC UD TP TL
 30 31 27 26 22 36 34 32 20 25 26 30 15 27 47
 2-00 333D 2X 10310M 4.2% 432F 3.2% 325P DHIA
 3-01 305D 2X 12450M 3.8% 471F 3.3% 408P 91
 4-07 305D 2X 14360M 4.4% 625F 3.3% 475P 92
 5-09 335D 2X 12530M 4.4% 549F 3.4% 427P 91

GR-MOENS MR AMERICA LORRI 91 @ 4-09 (90/91)
 3-04 345D 2X 26380M 4.6% 1214F 3.2% 834P 93

SHERMA VICTORY ELLAS ENHANCER 600510 (029GU00918)

02/07 USDA PTA +836M -0.02% +33F +79NM\$ 30NM%ile
 -0.08% +13P +51CM\$ 98% Rel
 AGA 02/07 PTAT +1.4 97% Rel PTI +83

LAUFENBERG ENTRY GENTRY 000003068837

02/07 USDA PTA -88M -0.01% -5F +184NM\$ 84NM%ile
 +0.02% +0P +190CM\$ 63% Rel
 5 Rec YDev: +203M +5F +15P
 3 App 02/07 PTAT +0.2 53% Rel CPI +23
 Appraisal: 90 @ 5-01 (90/90)
 5-11 353D 2X 22680M 4.5% 1020F 3.3% 759P 99

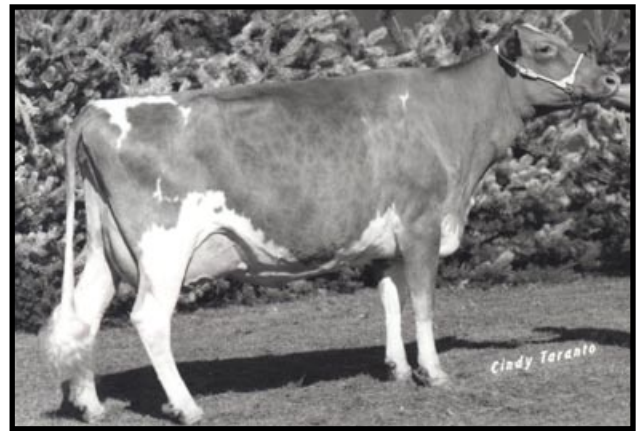
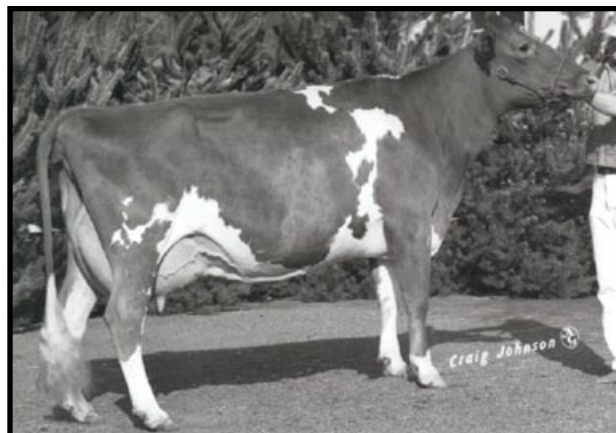
TROTACRE MERCURY LORAL-ET 000000602121 (007GU00322)

02/07 USDA PTA -49M -0.01% -5F -159NM\$ 0NM%ile
 -0.01% -3P -162CM\$ 97% Rel
 AGA 02/07 PTAT +1.5 96% Rel PTI +15

GT-DOSCH CC WONDER 000365011201

Appraisal: 86 @ 6-01 (83/83)

PR-MOENS CC KENT CHRISTA 76 @ 5-09 (71/82)
 3-04 305D 2X 9870M 5.0% 492F 3.4% 339P 93

**Four Winds BT Blossom EX-93****Butenschoens PW Cherry EX-91****Shady View DF Strawberry EX-93****Four Winds BT Charity EX-91**