



**Dix Lee Perfecto Fawna EX-93**

5-Time Reserve Jr. All-American  
Granddam of Lot 59

**LOT 59 DIX LEE TILLER FANG-ET**

**000068015494**

Born: 10-23-2006 Tattoo LE R292  
Breeder & Owner: STEVEN BRETT DIXON  
15823 MERCHANT DR  
PHILLIPSBURG MO 65722  
417-589-2906

**BULL**

PA: +873M -0.03% +33F -0.05% +20P +73CM\$ +88NM\$  
PTAT +1.6 PTI +123  
ST SR BD DF RA TW RL FA  
+2.7 +2.1 +2.9 +2.1 0.0 +2.7 P0.2 S0.5  
FU RH RW UC UD TP TL  
+0.2 +1.7 +2.0 +1.1 D0.6 C0.9 +0.1

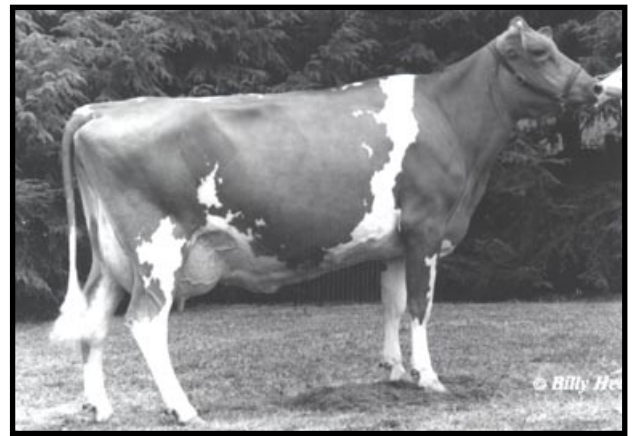
**TROTACRE LORAL TILLER-ET 000000603341 (007GU00360)**

02/07 USDA PTA +896M +0.02% +43F +80NM\$ 30NM%ile  
-0.04% +22P +69CM\$ 96% Rel  
AGA 02/07 PTAT +2.9 95% Rel PTI +164  
ST SR BD DF RA TW RL FA  
+3.9 +2.2 +3.0 +3.0 H1.2 +3.4 P0.3 S0.8  
FU RH RW UC UD TP TL  
+1.6 +2.6 +2.8 +1.3 S0.3 C1.9 +0.4

**DIX LEE LORRY FAY-ET 000003066944**

02/07 USDA PTA +849M -0.08% +23F +95NM\$ 61NM%ile  
-0.05% +18P +77CM\$ 51% Rel  
2 Rec YDev: +2815M +70F +70P  
2 App 02/07 PTAT +0.3 47% Rel CPI +80  
Appraisal: 86 @ 5-07 (83/88)  
ST SR BD DF RA TW RL FA FU RH RW UC UD TP TL  
43 39 47 36 27 42 29 33 15 32 27 43 28 21 25  
2-02 305D 2X 17820M 4.1% 728F 3.3% 584P 92  
3-11 365D 2X 25390M 3.7% 943F 3.1% 782P DHIA  
3RD JR 3-YEAR-OLD NJS-LOUISVILLE 2002  
5TH SUMMER YEARLING NJS-HARRISBURG 2001

DIX LEE TILLER FLASH @ ACCELERATED GENETICS  
DIX LEE OPTION FANCY 84 @ 4-01 (82/82)  
3-05 305D 2X 18900M 4.2% 798F 3.3% 619P 91



**Dix Lee Fayette Jingo EX-90**

4-02 21,510M 4.6% 992F 3.6% 768P  
Third Dam of Lot 59

**TROTACRE MERCURY LORAL-ET 000000602121 (007GU00322)**

02/07 USDA PTA -49M -0.01% -5F -159NM\$ 0NM%ile  
-0.01% -3P -162CM\$ 97% Rel  
AGA 02/07 PTAT +1.5 96% Rel PTI +15

**GREENWOOD M TILLIE-ET 000003013942**

02/07 USDA PTA +907M -0.07% +27F +43NM\$ 44NM%ile  
-0.05% +21P +28CM\$ 73% Rel  
2 Rec YDev: +3931M +118F +104P  
2 App 02/07 PTAT +1.4 65% Rel CPI +90  
Appraisal: 90 @ 3-03  
2-01 365D 2X 31730M\* 4.1% 1290F\* 3.1% 980P\* DHIA

**TROTACRE MERCURY LORRY-ET 000000602120 (014GU00258)**

02/07 USDA PTA +958M +0.02% +46F +208NM\$ 69NM%ile  
-0.06% +20P +187CM\$ 98% Rel  
AGA 02/07 PTAT +0.4 98% Rel PTI +119

**DIX LEE PERFECTO FAWNA-TW 000003038584**

02/07 USDA PTA -590M +0.09% -11F -13NM\$ 28NM%ile  
+0.02% -17P -10CM\$ 61% Rel  
3 App 02/07 PTAT +0.8 62% Rel CPI +2  
Appraisal: 93 @ 6-07  
4-00 305D 2X 19160M 3.9% 746F 3.4% 643P DHIR  
6-04 305D 2X 21590M 4.1% 880F 3.6% 773P DHIA  
7-09 305D 2X 22770M 3.9% 884F 3.2% 722P DHIA  
1937D 109,980M 4.2% 4,596F 3.5% 3,847P LIFE  
RES. JR ALL-AMERICAN AGED COW 1998, 1999, 2000 & 2001  
RES. JR ALL-AMERICAN 4-YEAR-OLD 1997  
RES. ALL-AMERICAN AGED COW 1999  
GRAND CHAMPION NGS-HARRISBURG 1998

DIX LEE LORRY FAITH-ET 91 @ 4-10 (91/87)  
4-00 365D 2X 25460M 4.7% 1189F 3.2% 810P DHIA  
DIX LEE FAWNAS FABLE 74 @ 2-04 (78/77)  
2-00 266D 2X 8180M 5.4% 440F 3.6% 293P 89

**THIRD DAM: DIX LEE FAYETTE JINGO 000002984299**

Appraisal: 90 @ 3-11  
4-02 305D 2X 21510M 4.6% 992F 3.6% 768P DHIR