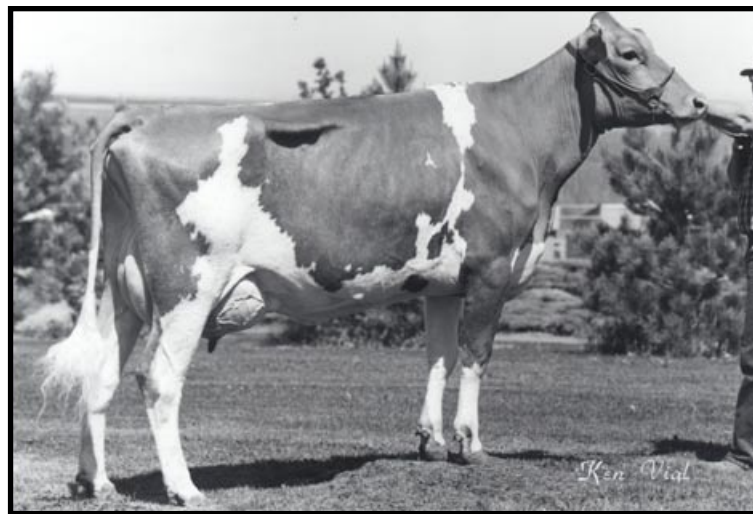


Win Crest Volcano Best EX-92

Fourth Dam of Lot 07

LOT 07 MOZIERS MAJOR BETSY

Born: 12-03-2006 Tattoo LE M612 RE M612
Breeder & Owner: DR JOHN O MOZIER
MOZIERS GUERNSEY FARM
29773 METCALF RD
LOUISBURG KS 66053
913-837-3946



Win Crest Volcano Berry EX-95

Full Sister to Best

000068014489

SELLING OPEN

WINTER CALF

PA: +229M +0.04% +17F +0.00% +7P +114CM\$ +114NM\$
PTAT +0.8 PTI +61
ST SR BD DF RA TW RL FA
+1.0 -0.5 -0.2 +1.2 L1.0 -0.4 P0.6 L0.2
FU RH RW UC UD TP TL
+0.0 +1.3 +0.8 -0.1 S0.1 C0.7 -1.0

JENS GOLD OPTION MAJOR 00000604712 (007GU00397)
02/07 USDA PTA +597M +0.07% +39F +182NM\$ 52NM%ile
+0.00% +19P +183CM\$ 54% Rel

MOZIER BOEHLE LUXURY BELLE 000003079582
02/07 USDA PTA -139M +0.01% -5F +46NM\$ 45NM%ile
+0.00% -5P +44CM\$ 54% Rel
2 Rec YDev: -849M -29F -26P
2 App 02/07 PTAT +0.8 52% Rel CPI -3
Appraisal: 84 @ 3-00 (83/83)
ST SR BD DF RA TW RL FA FU RH RW UC UD TP TL
24 17 19 39 23 16 27 34 17 42 35 23 18 17 16
1-09 365D 2X 14430M 4.6% 668F 3.3% 481P DHIA
3-00 288D 2X 14470M 4.6% 671F 3.4% 493P 94

THIRD DAM: WINCREST PENDER BERRY 000002989199
Appraisal: 75 @ 4-09
7-04 365D 2X 16240M 4.6% 754F 3.3% 537P DHIA

FOURTH DAM: WIN CREST VOLCANO BEST 000002931437----
Appraisal: 92 @ 6-03
5-09 365D 2X 17190M 4.5% 781F 3.7% 629P DHIA

FIFTH DAM: WINCREST FUTURE BERNIE 000002791506
Appraisal: 91 @ 6-09
5-06 340D 2X 15300M 4.8% 742F 3.9% 604P DHIA
HER DTR: WIN CREST VOLCANO BERRY 95 @ 3-07
3-04 311D 2X 16250M 4.7% 763F 3.5% 566P DHIA

SIXTH DAM: WIN CREST FLASHS BERNICE 000002725048
Appraisal: 90 @ 11-01
5-03 363D 2X 17160M 5.5% 950F DHIA
3234D 128,530M 5.1% 6,615F 2.1% 2,741P LIFE

JENSGOLDEN BIONIC OPTION 00000602643 (014GU00273)
02/07 USDA PTA +349M +0.09% +30F -37NM\$ 4NM%ile
+0.00% +11P -36CM\$ 93% Rel
AGA 02/07 PTAT +0.3 91% Rel PTI +56

JENS GOLD GOLIATH MAYPENNY 000003049507
02/07 USDA PTA +709M +0.11% +52F +417NM\$ 99NM%ile
+0.03% +29P +433CM\$ 63% Rel
4 Rec YDev: +2651M +158F +100P
4 App 02/07 PTAT +1.1 59% Rel CPI +189
Appraisal: 90 @ 5-10 (88/90) Gold Star Dam - 2002
5-02 365D 2X 26240M 5.0% 1304F 3.3% 867P DHIA

TROTACRE JAY MR LUXURY-ET 00000602751 (007GU00339)
02/07 USDA PTA +1146M -0.12% +29F +261NM\$ 91NM%ile
-0.03% +32P +253CM\$ 96% Rel
AGA 02/07 PTAT +1.0 95% Rel PTI +133

MOZIERS BOSSMAN BRIDGET 000003057220
02/07 USDA PTA -931M +0.15% -18F -36NM\$ 23NM%ile
+0.04% -24P -26CM\$ 63% Rel
5 Rec YDev: -1580M -2F -31P
4 App 02/07 PTAT +0.0 58% Rel CPI -68
Appraisal: 82 @ 5-11 (82/76)
2-02 289D 2X 10880M 5.0% 540F 3.4% 374P DHIA
3-02 349D 2X 14370M 5.1% 738F 3.4% 488P 97
4-04 303D 2X 13890M 4.6% 637F 3.5% 484P 96
5-04 297D 2X 14350M 5.2% 740F 3.7% 528P 97
6-03 365D 2X 18030M 5.4% 974F 3.6% 647P DHIA

MOZIERS TILLER BEST 83 @ 2-01 (82/88)
2-00 332D 2X 16670M 4.9% 822F 3.3% 546P 96