

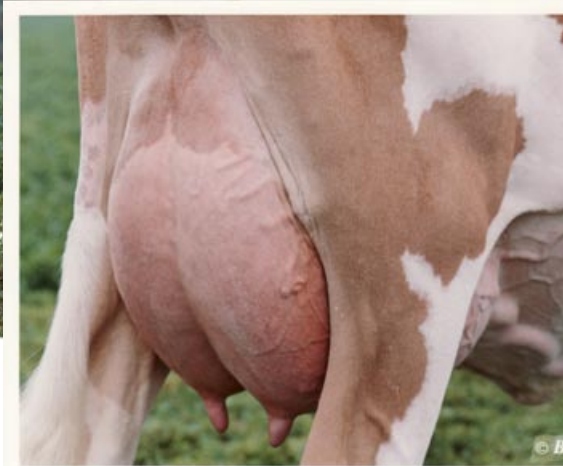


**Three Brooks Enhancer Dee VG-87**

5-00 365D 21,810M 4.1% 903F 3.5% 763P

Dam of Lot 900

Four offspring selling by her Tiller son!



**Dee's VG-89 udder!**

**LOT 900 THREE BROOKS TILLER DANIELLE USA000068003578**

Born: 09-27-2004 Tattoo LE 900

Breeder & Owner: HAWKER G EDGAR JR

THREE BROOKS FARM

4910 HAWKER RD

FREDERICK MD 21701

FRESH: 07-15-08

DHI Herd # 51077411 Cow Control 00900  
 08/08 USDA PTA +629M -0.02% +24F +13NM\$ 34NM%ile  
 -0.04% +14P +2CM\$ 48% Rel  
 1 Rec YDev: +153M +8F -11P  
 1 App 08/08 PTAT +2.1 45% Rel CPI +97  
 Appraisal: 86 @ 3-00 (85/82)  
 ST SR BD DF RA TW RL FA FU RH RW UC UD TP TL  
 40 36 37 33 15 35 32 29 34 34 35 28 28 35 25  
 2-05 365D 2X 14060M 4.9% 683F 3.4% 483P 99

**TROTACRE LORAL TILLER-ET USA000000603341 7GU360**

08/08 USDA PTA +625M +0.02% +32F -64NM\$ 9NM%ile  
 -0.04% +13P -77CM\$ 98% Rel  
 AGA 08/08 PTAT +2.8 97% Rel PTI +123  
 ST SR BD DF RA TW RL FA  
 +4.0 +2.2 +3.1 +3.3 H1.2 +3.5 P0.2 S0.9  
 FU RH RW UC UD TP TL  
 +1.5 +2.1 +2.5 +1.3 S0.1 C2.0 +0.2

**THREE BROOKS ENHANCER DEE USA000003063430**

08/08 USDA PTA +897M -0.07% +27F +71NM\$ 52NM%ile  
 -0.02% +26P +68CM\$ 58% Rel  
 4 Rec YDev: +2801M +89F +86P  
 2 App 08/08 PTAT +0.6 44% Rel CPI +74  
 Appraisal: 87 @ 3-07 (89/81)  
 ST SR BD DF RA TW RL FA FU RH RW UC UD TP TL  
 14 24 35 43 18 19 34 31 26 37 43 32 21 21 19  
 2-06 328D 2X 18260M 4.4% 798F 3.3% 602P DHIA  
 3-06 365D 2X 20890M 4.5% 948F 3.5% 740P 99  
 5-00 365D 2X 21810M 4.1% 903F 3.5% 763P 99  
 6-02 324D 2X 15840M 4.2% 665F 3.5% 557P 100

**TROTACRE MERCURY LORAL-ET USA000000602121 7GU322**

08/08 USDA PTA -18M +0.00% +0F -154NM\$ 0NM%ile  
 -0.01% -2P -157CM\$ 97% Rel  
 AGA 08/08 PTAT +1.5 96% Rel PTI +22

**GREENWOOD M TILLIE-ET USA000003013942**

08/08 USDA PTA +846M -0.07% +26F -27NM\$ 24NM%ile  
 -0.05% +18P -44CM\$ 66% Rel  
 2 Rec YDev: +3751M +110F +91P  
 2 App 08/08 PTAT +1.4 66% Rel CPI +75  
 Appraisal: 90 @ 3-03  
 2-01 365D 2X 31730M\* 4.1% 1290F\* 3.1% 980P\* DHIA

**ROYAL ACRES ENHANCER JB USA000000603423 1GU405**

08/08 USDA PTA +658M -0.01% +27F -137NM\$ 0NM%ile  
 -0.01% +20P -137CM\$ 95% Rel  
 AGA 08/08 PTAT +0.7 94% Rel PTI +47

**THREE BROOKS BILLYS DOVE USA000003052117**

08/08 USDA PTA -31M -0.09% -16F -34NM\$ 22NM%ile  
 -0.02% -4P -40CM\$ 59% Rel  
 4 Rec YDev: -294M -42F -12P  
 2-02 296D 2X 11150M 4.5% 501F 3.6% 404P DHIA  
 3-02 332D 2X 11590M 4.7% 542F 3.6% 417P DHIA  
 4-02 365D 2X 14820M 4.6% 686F 3.6% 530P 99