

**LOT 42 SOLID GOLD VILTER ALMOND****000068010821**

Born: 08-26-2005

Breeder &amp; Owner: SARAH WEIMER

RD 1 BOX 166

EMLENTON PA 16373

814-498-2047

FRESH 02-18-08

SELLING OPEN

PA: +545M -0.03% +20F -0.03% +12P -28CM\$ -18NM\$

PTAT +0.8 PTI +56

ST SR BD DF RA TW RL FA

+0.7 +0.0 +0.5 +1.2 L0.4 +0.3 P0.3 L0.1

FU RH RW UC UD TP TL

+0.6 +1.7 +1.3 +0.3 S0.4 C0.5 -0.4

**LANTZ FARM ENHANCER VILTER-ET 603214 (007GU00358)**

01/08 USDA PTA +304M +0.06% +24F -39NM\$ 9NM%ile

-0.03% +4P -51CM\$ 91% Rel

AGA 01/08 PTAT +1.5 88% Rel PTI +64

ST SR BD DF RA TW RL FA

+0.7 -0.2 +0.8 +1.8 H0.6 +0.7 S0.1

FU RH RW UC UD TP TL

+1.9 +2.9 +1.6 +0.5 S1.3 C1.8 -0.7

**SOLID GOLD TYLER APPLEBEE-ET 000068000706**

01/08 USDA PTA +786M -0.11% +16F +4NM\$ 33NM%ile

-0.03% +20P -5CM\$ 52% Rel

2 Rec YDev: +2308M +42F +71P

2 App 01/08 PTAT +0.1 52% Rel CPI +48

Appraisal: 78 @ 3-05 (76/78)

ST SR BD DF RA TW RL FA FU RH RW UC UD TP TL

36 13 15 43 34 28 16 17 14 33 38 19 17 13 32

2-00 359D 2X 21340M 3.9% 837F 3.4% 724P 72

3-03 365D 2X 24540M 4.1% 995F 3.3% 809P DHIA

**SHERMA VICTORY ELLAS ENHANCER 600510 (029GU00918)**

01/08 USDA PTA +681M -0.01% +28F +26NM\$ 22NM%ile

-0.08% +8P -3CM\$ 97% Rel

AGA 01/08 PTAT +1.3 97% Rel PTI +66

**GLEN BROOK SMOKEY VIVIAN 000002983268**

01/08 USDA PTA +309M +0.01% +15F +8NM\$ 35NM%ile

-0.01% +8P +5CM\$ 71% Rel

4 Rec YDev: +1176M +59F +44P

1 App 01/08 PTAT +1.5 62% Rel CPI +67

Appraisal: 93 @ 6-03 Gold Star Dam - 1994

8-01 365D 2X 30110M 4.1% 1234F 3.2% 969P DHIA

**TROTACRE ENHANCER TYLER-ET 603340 (009GU00148)**

01/08 USDA PTA +437M -0.07% +7F -156NM\$ 0NM%ile

-0.05% +5P -174CM\$ 90% Rel

AGA 01/08 PTAT +1.1 87% Rel PTI +15

**SNIDERS PERFECT ACTRESS 000003048236**

01/08 USDA PTA +772M -0.08% +21F +243NM\$ 94NM%ile

-0.03% +20P +235CM\$ 67% Rel

3 Rec YDev: +3241M +102F +83P

5 App 01/08 PTAT +0.1 65% Rel CPI +91

Appraisal: 92 @ 6-00 (92/88)

2-01 305D 2X 15300M 3.8% 583F 3.3% 504P DHIA

3-02 305D 3X 20690M 4.2% 863F 3.3% 674P DHIA

5-04 305D 3X 32810M\* 4.5% 1473F 3.1% 1020P DHIA

*RES. JR. ALL-AMERICAN JR. 3-YEAR-OLD 2000**NOM. ALL-AMERICAN JR. 3-YEAR-OLD 2000**RES. JR ALL-AMERICAN 5-YEAR-OLD 2002**HM JR ALL-AMERICAN AGED COW 2003*

SNIDERS SENSATION ALTIMA 88 @ 7-00 (90/91)

5-01 365D 2X 23800M 4.5% 1082F 3.5% 829P DHIA

SOLID GOLD VILTER ADDIE-ET 84 @ 3-08 (88/78)

SOLID GOLD TILLER APPLAUSE-ET 85 @ 2-01 (88/91)

2-00 309D 2X 16060M 3.9% 622F 3.1% 505P 93

SOLID GOLD VILTER ARIEL-ET 81 @ 2-00 (80/88)

1-11 305D 2X 14540M 4.6% 662F 3.5% 508P 94

SOLID GOLD VILTER ARWEN-ET 88 @ 3-05 (90/90)

2-01 305D 2X 13340M 4.9% 654F 3.5% 468P 94

*RES. JR CHAMPION VT STATE FAIR 2005*

SOLID GOLD ACTRESS ANGEL 87 @ 3-06 (86/86)

2-01 305D 2X 18150M 3.7% 675F 3.1% 556P 93

*3RD JR. 2-YEAR-OLD NJS-HARRISBURG 2006**4TH JR. 3-YEAR-OLD NJS-HARRISBURG 2007*

SOLID GOLD VILTER AVALON-ET 84 @ 3-05 (85/78)

2-00 325D 2X 16970M 4.1% 703F 3.1% 528P 95

SOLID GOLD VILTER ADELE-ET 89 @ 2-11 (90/87)

2-07 365D 2X 24160M 4.8% 1163F 3.3% 799P DHIA

**THIRD DAM: SNIDERS OBIE APRICOT 000003017293**

Appraisal: 85 @ 4-04

6-03 305D 2X 18800M 3.7% 700F 3.2% 602P DHIA

2798D 134,110M 3.7% 5,020F 3.2% 4,297P LIFE

**FOURTH DAM: SNIDERS VICTORYS AUDIE-TW 2995038**

Appraisal: 85 @ 5-07

10-02 305D 2X 18140M 4.4% 793F 3.2% 572P DHIA

3029D 142,730M 4.5% 6,412F 3.6% 5,068P LIFE

**Sniders Perfect Actress EX-92**

5-04 365D 37,398M 4.5% 1,668F 3.2% 1,180P

HM Jr. All-American Aged Cow 2003

Granddam of Lot 42 &amp; 43

# LOT 43 SOLID GOLD KHAN ARIEL 000068010157

Born: 03-24-2006 Tattoo LE SG62 RE SG62

BRED: 08-21-07 DUE: 06-01-08

Breeder: SARAH WEIMER

MY DAY BLISS BANGER-ET 603872 007GU00379

EMLENTON PA

Owner: ROBERT JASON HENISEE

VILLAGE VIEW FARM

680 MUSSER RD

MOUNT JOY PA 17552

717-653-6988

PA: +571M +0.06% +36F +0.01% +20P +141CM\$ +137NM\$

PTAT +1.5 PTI +123

ST SR BD DF RA TW RL FA

+1.0 +0.8 +1.2 +1.0 H0.5 +0.8 S0.1 S0.3

FU RH RW UC UD TP TL

+1.5 +1.2 +1.2 +0.5 S0.8 C1.6 -0.7

## RIVERWOOD TILLER KHAN 00000605000 (007GU00409)

PA: +771M +0.10% +52F +0.02% +29P +218CM\$ +207NM\$

PTAT +2.2 PTI +172

ST SR BD DF RA TW RL FA

+2.3 +1.5 +1.8 +2.0 H1.8 +1.9 P0.1 S0.4

FU RH RW UC UD TP TL

+1.5 +1.5 +2.0 +0.5 S0.5 C1.0 -0.5

## SOLID GOLD VILTER ARIEL-ET 000068000708

01/08 USDA PTA +370M +0.02% +20F +66NM\$ 53NM%ile

-0.01% +10P +63CM\$ 51% Rel

2 Rec YDev: -155M +27F +13P

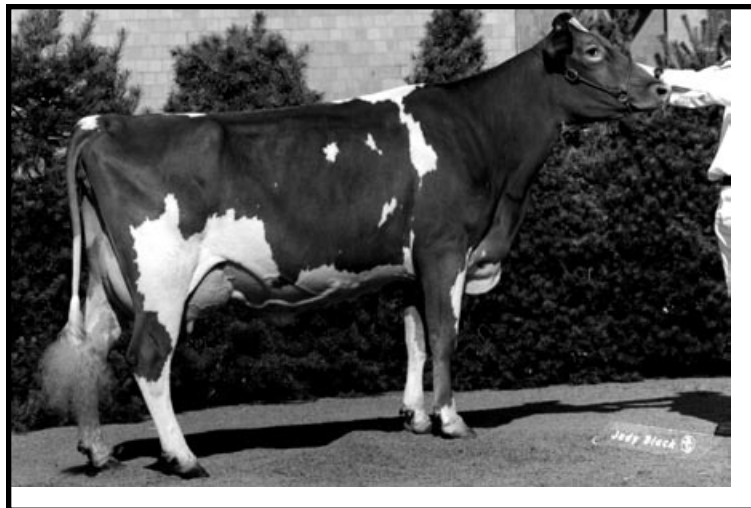
1 App 01/08 PTAT +0.8 47% Rel CPI +72

Appraisal: 81 @ 2-00 (80/88)

ST SR BD DF RA TW RL FA FU RH RW UC UD TP TL

22 16 17 23 36 14 27 34 20 32 25 27 37 44 22

1-11 305D 2X 14540M 4.6% 662F 3.5% 508P 94



### **Sniders G Henry Addie EX-90**

HM All-American Jr. Three-Year-Old 1999

Maternal Family Member of Lot 42 & 43

## TROTACRE LORAL TILLER-ET 00000603341 (007GU00360)

01/08 USDA PTA +671M +0.01% +32F -19NM\$ 13NM%ile

-0.05% +14P -33CM\$ 97% Rel

AGA 01/08 PTAT +2.8 97% Rel PTI +132

## RIVERWOOD GLACIER KUKU 000003052931

01/08 USDA PTA +870M +0.19% +72F +432NM\$ 99NM%ile

+0.08% +43P +468CM\$ 62% Rel

5 Rec YDev: +2332M +186F +112P

3 App 01/08 PTAT +1.5 58% Rel CPI +210

Appraisal: 88 @ 5-02 Gold Star Dam - 2002

6-11 305D 2X 23910M 4.4% 1047F 3.8% 905P 94

## LANTZ FARM ENHANCER VILTER-ET 603214 (007GU00358)

01/08 USDA PTA +304M +0.06% +24F -39NM\$ 9NM%ile

-0.03% +4P -51CM\$ 91% Rel

AGA 01/08 PTAT +1.5 88% Rel PTI +64

## SNIDERS PERFECT ACTRESS 000003048236

01/08 USDA PTA +772M -0.08% +21F +243NM\$ 94NM%ile

-0.03% +20P +235CM\$ 67% Rel

3 Rec YDev: +3241M +102F +83P

5 App 01/08 PTAT +0.1 65% Rel CPI +91

Appraisal: 92 @ 6-00 (92/88)

2-01 305D 2X 15300M 3.8% 583F 3.3% 504P DHIA

3-02 305D 3X 20690M 4.2% 863F 3.3% 674P DHIA

5-04 305D 3X 32810M\* 4.5% 1473F 3.1% 1020P DHIA

RES. JR. ALL-AMERICAN JR. 3-YEAR-OLD 2000

NOM. ALL-AMERICAN JR. 3-YEAR-OLD 2000

RES. JR ALL-AMERICAN 5-YEAR-OLD 2002

HM JR ALL-AMERICAN AGED COW 2003

SNIDERS SENSATION ALTIMA 88 @ 7-00 (90/91)

5-01 365D 2X 23800M 4.5% 1082F 3.5% 829P DHIA

SOLID GOLD VILTER ADDIE-ET 84 @ 3-08 (88/78)

SOLID GOLD TILLER APPLAUSE-ET 85 @ 2-01 (88/91)

2-00 309D 2X 16060M 3.9% 622F 3.1% 505P 93

SOLID GOLD VILTER ARIEL-ET 81 @ 2-00 (80/88)

1-11 305D 2X 14540M 4.6% 662F 3.5% 508P 94

SOLID GOLD VILTER ARWEN-ET 88 @ 3-05 (90/90)

2-01 305D 2X 13340M 4.9% 654F 3.5% 468P 94

RES. JR CHAMPION VT STATE FAIR 2005

SOLID GOLD ACTRESS ANGEL 87 @ 3-06 (86/86)

2-01 305D 2X 18150M 3.7% 675F 3.1% 556P 93

3RD JR. 2-YEAR-OLD NJS-HARRISBURG 2006

4TH JR. 3-YEAR-OLD NJS-HARRISBURG 2007

SOLID GOLD VILTER AVALON-ET 84 @ 3-05 (85/78)

2-00 325D 2X 16970M 4.1% 703F 3.1% 528P 95

SOLID GOLD VILTER ADELE-ET 89 @ 2-11 (90/87)

2-07 365D 2X 24160M 4.8% 1163F 3.3% 799P DHIA

## THIRD DAM: SNIDERS OBIE APRICOT 000003017293

Appraisal: 85 @ 4-04

6-03 305D 2X 18800M 3.7% 700F 3.2% 602P DHIA

2798D 134,110M 3.7% 5,020F 3.2% 4,297P LIFE

## FOURTH DAM: SNIDERS VICTORYS AUDIE-TW 2995038

Appraisal: 85 @ 5-07

10-02 305D 2X 18140M 4.4% 793F 3.2% 572P DHIA

3029D 142,730M 4.5% 6,412F 3.6% 5,068P LIFE

**LOT 44 CREEK VIEW RIP HOPE****000068020289**

Born: 05-07-2007 Tattoo LE P06 RE P06  
 Breeder & Owner: ALEXIS M PHEASANT  
 RD 2 BOX 180  
 WILLIAMSBURG PA 16693

SELLING OPEN

PA: +120M -0.06% -4F -0.04% -2P -39CM\$ -27N  
 PTAT +0.5 PTI +14  
 ST SR BD DF RA TW RL FA  
 +0.2 +0.2 +0.2 -0.2 H0.4 +0.4 P0.8 S0.3  
 FU RH RW UC UD TP TL  
 +0.9 +1.1 +0.4 +0.1 S1.0 W0.8 +0.7

**SNIDERS MAGICMAN RIP 000000604074 (120GU00648)**

01/08 USDA PTA +30M -0.04% -5F -84NM\$ 0NM%ile  
 -0.02% -2P -91CM\$ 66% Rel  
 AGA 01/08 PTAT +0.8 65% Rel PTI +18  
 ST SR BD DF RA TW RL FA  
 +1.3 +0.7 +0.6 +0.5 H0.2 +1.2 P1.0 S0.7  
 FU RH RW UC UD TP TL  
 +0.6 +2.3 +1.2 +0.0 S0.9 W2.2 +2.4

**SNIDERS NEONS HAINES 000068000362**

01/08 USDA PTA +209M -0.07% -2F +31NM\$ 42NM%ile  
 -0.05% -1P +14CM\$ 50% Rel  
 2 Rec YDev: +367M -3F -7P  
 2-01 291D 2X 14990M 4.1% 608F 3.1% 460P 93

**THIRD DAM: SNIDERS STREAK HILDA 000003026500**

Appraisal: 85 @ 6-08  
 4-02 343D 2X 18120M 4.4% 806F 3.6% 654P DHIA

**FOURTH DAM: SNIDERS JEDS HEIDI 000002875186**

Appraisal: 83 @ 5-09  
 7-08 321D 2X 15740M 4.6% 730F 3.4% 531P DHIA  
 2717D 110,040M 4.3% 4,735F 3.5% 3,810P LIFE

**FOUR WINDS MAGICMAN-ET 000000602265 (072GU00120)**

01/08 USDA PTA -118M +0.07% +7F -37NM\$ 9NM%ile  
 +0.03% +1P -28CM\$ 97% Rel  
 AGA 01/08 PTAT +1.2 95% Rel PTI +38

**GUERNDALE FAYETTES ROBIN 000002990393**

01/08 USDA PTA -250M -0.07% -22F -156NM\$ 4NM%ile  
 -0.06% -18P -179CM\$ 64% Rel  
 4 Rec YDev: +61M -30F -12P  
 2 App 01/08 PTAT +0.1 54% Rel CPI -56  
 Appraisal: 93 @ 9-11  
 3-11 305D 2X 20390M 4.3% 878F 3.4% 689P DHIR

**LANG HAVEN LUXURY NEON 000000604188 (007GU00381)**

01/08 USDA PTA +1085M -0.14% +24F +202NM\$ 63NM%ile  
 -0.08% +22P +177CM\$ 81% Rel  
 AGA 01/08 PTAT +1.3 77% Rel PTI +129

**SNIDERS LORAL HELEN 000003063813**

01/08 USDA PTA -647M +0.01% -27F -142NM\$ 5NM%ile  
 +0.01% -19P -140CM\$ 58% Rel  
 4 Rec YDev: -1756M -69F -45P  
 2 App 01/08 PTAT -0.9 52% Rel CPI -98  
 Appraisal: 79 @ 5-02 (80/77)  
 2-01 305D 2X 10970M 4.4% 485F 3.4% 373P DHIA  
 3-08 300D 2X 12020M 4.5% 540F 3.6% 434P 93  
 4-07 334D 2X 14960M 4.4% 664F 3.6% 543P 94  
 5-11 320D 2X 14020M 4.8% 673F 3.5% 497P 93