



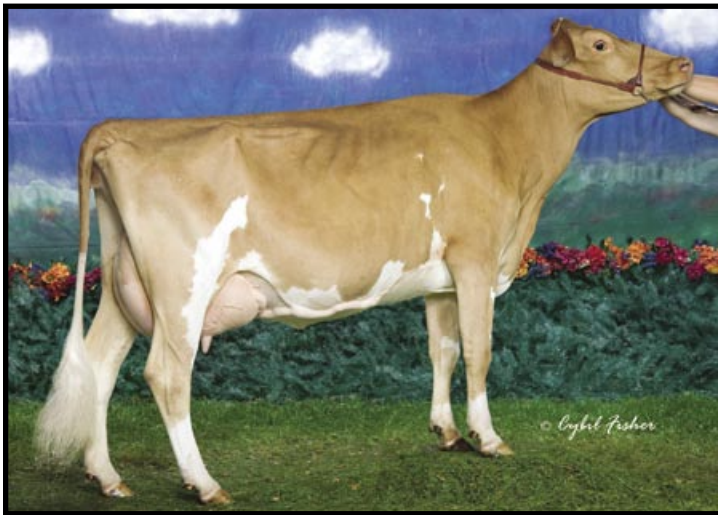
**Cedar Fringed Altann EX-95**

6-04 365D 31,150M 4.8% 1,486F 3.1% 941P  
Grand Champion World Dairy Expo 2000  
Granddam of Lot 4



**Sniders Ben Aliyah EX-93**

5-07 365D 21,930M 4.6% 1,016F 3.7% 815P  
Nominated All-American Aged Cow 2004  
Dam of Lot 4



**Sniders Deemand Alabye-ET EX-90**

Res. All-American Jr. 3-Year-Old 2007  
Maternal Sister to Dam of Lot 4



**Sniders Omni Aerolin EX-92**

Nom. All-American 4-Year-Old 2005  
Maternal Sister to Lot 4



**Sniders Dividend Avary EX-91**

5-03 342D 21,490M 788F 623P  
Maternal Sister to Dam of Lot 4



**Sniders Dollars Adeline EX-90**

Nom. All-American Jr. 3-Year-Old 2007  
Dam is Aerolin - Above

**LOT 4 SNIDERS SPIDER ALYCHA-ET****USA000068021331**

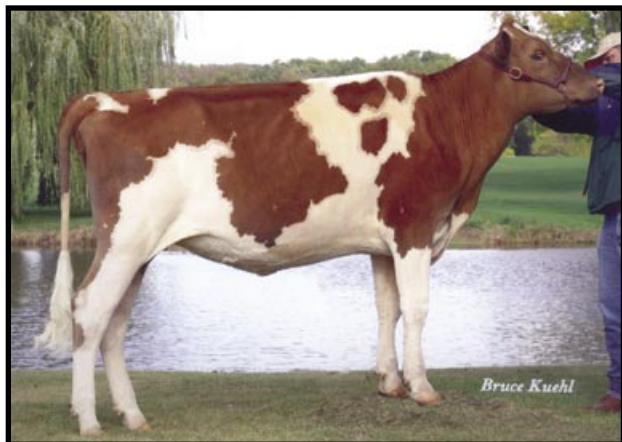
Born: 01-14-2008 Tattoo LE S122 RE S122

SELLING OPEN

Breeder &amp; Owner: AARON GABLE

2345 BRUMBAUGH RD  
NEW ENTERPRISE PA 16664  
814-766-3272

PA: +599M +0.11% +45F +0.05% +29P +216CM\$ +194NM\$

PTAT +1.4 PTI +145  
ST SR BD DF RA TW RL FA  
+2.9 +1.3 +0.9 +1.5 L0.3 +1.5 S0.2 S0.3  
FU RH RW UC UD TP TL  
+2.0 +2.6 +1.6 -0.6 S1.2 C1.1 -0.9**COULEE CREST LUXURY SPIDER-ET USA604229 1GU415**08/08 USDA PTA +854M +0.02% +41F +119NM\$ 50NM%ile  
+0.02% +32P +132CM\$ 82% Rel  
AGA 08/08 PTAT +1.3 77% Rel PTI +132  
ST SR BD DF RA TW RL FA  
+5.6 +1.9 +2.4 +3.2 L1.2 +2.1 S0.3 0.0  
FU RH RW UC UD TP TL  
+0.6 +2.9 +2.0 -0.7 S0.1 C1.2 -1.8**SNIDERS BEN ALIYAH USA000003057464**08/08 USDA PTA +343M +0.20% +49F +269NM\$ 95NM%ile  
+0.08% +25P +300CM\$ 68% Rel  
5 Rec YDev: +626M +90F +50P  
4 App 08/08 PTAT +1.4 66% Rel CPI +153  
Appraisal: 93 @ 4-08 (93/93) Gold Star Dam - 2003  
ST SR BD DF RA TW RL FA FU RH RW UC UD TP TL  
35 24 23 46 18 28 23 34 36 40 40 21 30 28 31  
2-02 324D 2X 17000M 4.7% 803F 3.4% 572P 95  
3-03 304D 2X 17640M 4.3% 758F 3.6% 629P DHIA  
4-02 305D 2X 21670M 5.5% 1196F 3.5% 762P 94  
5-07 365D 2X 21930M 4.6% 1016F 3.7% 815P DHIA  
7-00 365D 2X 12230M 4.7% 576F 3.6% 439P DHIA  
1998D 100,930M 4.8% 4,865F 3.6% 3,655P LIFE  
NOM. ALL-AMERICAN AGED COW 2004  
5TH AGED COW NGS-MADISON 2004  
3RD AGED COW NGS-LOUISVILLE 2004  
3RD 5-YEAR-OLD NGS-HARRISBURG 2003  
3RD 4-YEAR-OLD NGS-LOUISVILLE 2002SNIDERS LORAL ARCHIE PTI +108  
SNIDERS OPTION ABBA 80 @ 5-02 (76/84)  
3-05 347D 2X 17980M 5.5% 981F 3.8% 688P 94  
SNIDERS RIP ALIYON 83 @ 4-03 (82/78)  
2-03 305D 2X 13920M 4.5% 629F 3.5% 481P 96  
SNIDERS LORAL AVALON-ET 89 @ 3-00 (90/91)  
2-03 305D 2X 18770M 4.7% 886F 3.4% 638P 94  
SNIDERS TILLER AUSTIN-ET 85 @ 2-05 (84/88)  
2-04 305D 2X 27730M 4.9% 1364F 3.7% 1032P\* 94  
SOLD FOR \$10,000 AS A YEARLING  
ALL-AMERICAN WINTER YEARLING 2005  
SNIDERS OMNI AEROLIN 92 @ 5-06 (93/88)  
4-08 365D 2X 19900M 5.1% 1023F 3.4% 673P DHIA  
NOM. ALL-AMERICAN 4-YEAR-OLD 2005  
RES. GRAND CHAMPION NJS-HARRISBURG 2005**Sniders Tiller Austin VG-85**

All-American Winter Yearling 2005

Maternal Sister to Lot 4

**TROTACRE JAY MR LUXURY-ET USA000000602751 7GU339**08/08 USDA PTA +1024M -0.12% +24F +214NM\$ 77NM%ile  
-0.03% +28P +206CM\$ 97% Rel  
AGA 08/08 PTAT +1.2 95% Rel PTI +118**COULEE CREST ENHANCER SNOW-ET USA000003050736**08/08 USDA PTA +881M +0.07% +52F +94NM\$ 61NM%ile  
-0.06% +19P +77CM\$ 72% Rel  
1 App 08/08 PTAT +1.4 70% Rel CPI +116  
Appraisal: 88 @ 2-08  
2-01 365D 2X 21059M 6.3% 1319F 3.7% 784P DHIA**SNIDERS ENHANCER BEN USA000000603217**08/08 USDA PTA +36M +0.10% +19F +38NM\$ 13NM%ile  
+0.04% +8P +53CM\$ 68% Rel  
AGA 08/08 PTAT +0.6 74% Rel PTI +55**CEDAR FRINGED ALTANN USA000003045188**08/08 USDA PTA +831M +0.09% +53F +311NM\$ 97NM%ile  
-0.06% +17P +293CM\$ 79% Rel  
4 Rec YDev: +2414M +141F +60P  
5 App 08/08 PTAT +1.6 78% Rel CPI +150  
Appraisal: 95 @ 6-11 (95/93) Gold Star Dam - 2001  
2-02 305D 2X 19300M 4.3% 829F 3.2% 613P DHIR  
3-11 320D 2X 23380M 4.4% 1034F 3.1% 731P DHIA  
4-10 305D 2X 17440M 4.8% 838F 3.3% 584P DHIA  
6-04 365D 2X 31150M 4.8% 1486F 3.1% 941P 94  
8-07 365D 2X 25830M 4.9% 1273F 3.1% 791P DHIA  
2999D 168,160M 4.8% 8,035F 3.3% 5,522P LIFE  
RES. ALL-AMERICAN JR 2-YEAR-OLD 1998  
HM JR ALL-AMERICAN JR 3-YR-OLD 1999  
ALL-AMERICAN 4-YEAR-OLD 2000  
JR ALL-AMERICAN 5-YEAR-OLD 2001  
HM ALL-AMERICAN AGED COW 2002  
GRAND CHAMPION NGS-HARRISBURG 2000 & 2001  
GRAND CHAMPION NGS-MADISON 2000  
GRAND CHAMPION NJS-HARRISBURG 2001  
DAM OF THREE PRODUCE OF DAM ALL-AMERICAN NOMINATIONS  
SNIDERS OPTION AARON-ET PTI +177  
SNIDERS VALORS ALIANCE-ET PTI +115  
SNIDERS RONALDS ALSTAR PTI +158  
SNIDERS TILLER ALTANIC @ SELECT SIRE  
SNIDERS DEEMAND ADACKA @ TAURUS  
SNIDERS VALORS ANDEE-ET 92 @ 5-11 (93/91)  
4-02 365D 2X 18430M 4.2% 783F 3.2% 584P DHIA  
SNIDERS OPTION AVEE 90 @ 3-07 (91/85)  
3-03 365D 2X 19330M 5.0% 970F 3.6% 696P DHIA  
SNIDERS OPTION AMMEE-ET 86 @ 2-03 (88/86)  
2-00 305D 2X 13330M 4.8% 635F 3.2% 424P 84  
SNIDERS VALORS AXELLE-ET 80 @ 4-05 (76/84)  
2-01 365D 2X 22000M 4.4% 961F 3.3% 719P DHIA  
SNIDERS VALORS ASHLYN-ET 90 @ 3-08 (90/85)  
3-01 365D 2X 25320M 4.6% 1169F 3.2% 807P 42  
SNIDERS VALORS AMELIA-ET 86 @ 3-07 (85/81)  
3-01 331D 2X 18670M 3.9% 735F 3.2% 599P 100  
SNIDERS VALORS ALURE-ET 76 @ 4-05 (71/87)  
3-00 365D 2X 25000M 5.0% 1252F 3.7% 913P DHIA  
SNIDERS VALORS ALLI-ET 88 @ 5-11 (88/92)  
3-00 365D 2X 19950M 4.6% 924F 3.4% 678P 94  
SNIDERS OPTION ALOE-ET 85 @ 2-02 (85/86)  
3-01 310D 2X 14400M 4.3% 614F 3.3% 480P 95  
SNIDERS DEEMAND ALABYE-ET 90 @ 3-08 (91/88)  
3-04 349D 2X 16150M 4.6% 735F 3.3% 537P 93  
RES. ALL-AMERICAN JR. 3-YEAR-OLD 2007  
SNIDERS DIVIDEND AVARY 91 @ 4-07 (93/88)  
5-03 342D 2X 21490M 3.7% 788F 2.9% 623P 95  
NOM. ALL-AMERICAN JR. 2-YEAR-OLD 2002