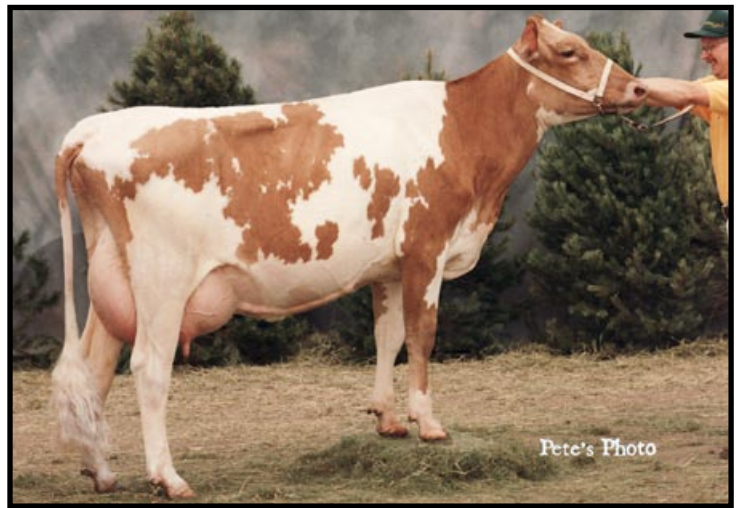




Idle Gold Royal Contessa-ET VG-88
 5-02 365D 39,960M* 4.5% 1,780F 3.0% 1,285P
 #1 CPI Cow August '08
 Maternal Family Member of Lot 18



PAFarms Fortress Cassandra VG-89
 3-04 363D 30,970M 4.0% 1,250F 3.0% 943P
 Maternal Family Member of Lot 18



PAFarms Harpoon Cherry EX-90
 3-07 365D 20,586M 4.7% 974F 3.8% 782P
 Maternal Family Member of Lot 18



PAFarms Smokey Claeresa-ET EX-90
 7-01 365D 23,290M 4.4% 1,018F 3.2% 741P
 Sister to 4th Dam of Lot 18



Res. All-American Dam/Daughter 2007
PAFarms Aliance Corvair VG-84
 #112 On The August '08 CPI List
 Maternal Family Member of Lot 18



PAFarms Faro Camero EX-91
 #47 On the August '08 CPI List
 Maternal Family Member of Lot 18

LOT 18 EMBRYOS FROM PAFARMS TILLER CHARGER

Owner: ANDREW FRITSCHÉ
25733 CO RD 12
NEW ULM MN 56073
507-359-7766

SELLING 5 #1 EMBRYOS BY AARON FROM CHARGER.
BUYER RESPONSIBLE FOR COST AND LIABILITY OF SHIPPING.

SNIDERS OPTION AARON-ET USA000000604670 7GU395
08/08 USDA PTA +815M +0.11% +55F +262NM\$ 86NM%ile
-0.03% +21P +254CM\$ 88% Rel
AGA 08/08 PTAT +1.5 81% Rel PTI +177
ST SR BD DF RA TW RL FA
+1.3 -0.1 -0.3 +2.2 H0.2 -0.2 0.0 S0.5
FU RH RW UC UD TP TL
+1.0 +2.3 +2.2 +0.9 S0.2 C1.9 -0.6

PAFARMS TILLER CHARGER-TW USA000068004432
08/08 USDA PTA +1082M -0.10% +30F +139NM\$ 73NM%ile
-0.03% +30P +132CM\$ 51% Rel
2 Rec YDev: +2459M +70F +83P
2 App 08/08 PTAT +2.5 52% Rel CPI +146
Appraisal: 86 @ 3-06 (87/85)
ST SR BD DF RA TW RL FA FU RH RW UC UD TP TL
31 26 37 32 7 18 15 17 34 41 28 38 35 18 39
2-02 365D 2X 19134M 4.1% 803F 3.5% 672P 100
#100 ON THE 08/08 CPI LIST
INTERMEDIATE CHAMPION MN STATE FAIR 2008



PAFarms Tiller Charger VG-86
Int. Champion MN State Fair 2008
Dam of Lot 18



JENSGOLDEN BIONIC OPTION USA000000602643 14GU273
08/08 USDA PTA +95M +0.11% +23F -139NM\$ 0NM%ile
+0.01% +4P -136CM\$ 94% Rel
AGA 08/08 PTAT +0.4 93% Rel PTI +32

CEDAR FRINGED ALTANN USA000003045188
08/08 USDA PTA +831M +0.09% +53F +311NM\$ 97NM%ile
-0.06% +17P +293CM\$ 79% Rel
5 App 08/08 PTAT +1.6 78% Rel CPI +150
Appraisal: 95 @ 6-11 (95/93) Gold Star Dam - 2001
6-04 305D 2X 27640M 4.8% 1324F 3.0% 825P 94

TROTACRE LORAL TILLER-ET USA000000603341 7GU360
08/08 USDA PTA +625M +0.02% +32F -64NM\$ 9NM%ile
-0.04% +13P -77CM\$ 98% Rel
AGA 08/08 PTAT +2.8 97% Rel PTI +123

PAFARMS HOT SHOT CAROL USA000003066067
08/08 USDA PTA +1376M -0.20% +25F +249NM\$ 93NM%ile
-0.05% +36P +235CM\$ 63% Rel
5 Rec YDev: +3602M +58F +88P
2 App 08/08 PTAT +1.5 58% Rel CPI +138
Appraisal: 86 @ 3-11 (83/85)
2-04 365D 2X 21790M 3.6% 775F 3.1% 678P DHIA
3-09 363D 2X 20550M 3.8% 772F 3.2% 659P 99
4-10 336D 2X 22320M 3.5% 775F 3.1% 689P 100
5-11 365D 2X 25090M 3.5% 884F 3.2% 801P 100
7-01 305D 2X 20580M 3.7% 754F 3.1% 634P 100
2012D 122,360M 3.6% 4,420F 3.2% 3,888P LIFE
4TH WINTER YEARLING NJS-MADISON 2001

PAFARMS VALIANT CARRIE 82 @ 5-03 (81/77)
3-07 339D 2X 15310M 5.1% 778F 4.1% 621P 100
PAFARMS TILLER CHALLENGER-TW 83 @ 2-09 (82/77)
2-06 365D 2X 15010M 4.2% 631F 3.5% 520P DHIA
PAFARM SPECIAL CORVETTE 87 @ 2-05 (88/83)

3RD DAM: PAFARMS SHARP CHRISTMAS USA000003054114
Appraisal: 86 @ 4-04
4-00 350D 2X 19480M 3.7% 727F 3.3% 650P DHIA
NOM. JR ALL-AMERICAN WINTER CALF 1998
HER DAUGHTER: PAFARMS HOT SHOT CHEVELLE EX-90
RES. GRAND CHAMPION MN STATE FAIR 2008

4TH DAM: PAFARMS SMOKEY CORAL-TW USA3017429
Appraisal: 84 @ 4-03
3-07 365D 2X 18450M 4.0% 746F 3.3% 609P DHIA

5TH DAM: PAFARMS FRANK CORY USA000002959397
Appraisal: 81 @ 3-10 Gold Star Dam - 1993
4-01 365D 2X 23080M 5.0% 1154F 3.7% 850P DHIA
5-05 365D 2X 20930M 4.7% 994F 3.4% 717P DHIA
4TH SR. 2-YEAR-OLD NJS-MADISON 1991
HER DTR: PAFARMS SMOKEY CLAREESA-ET 90 @ 5-05
5-01 365D 2X 21425M 4.4% 942F 3.7% 803P DHIA
GRANDDAM OF IDLE GOLD E CHALLENGE-ET

PAFarms Hot Shot Carol VG-86
5-11 365D 25,090M 3.5% 884F 3.2% 801P
Granddam of Lot 18