



Coulee Crest Tiller Serena EX-90
All-American Jr. 2-Year-Old 2005
Dam of Lot 23



Coulee Crest Enhancer Snow-ET VG-88
Dam of Spider & Skipper
4th Dam of Lot 23

LOT 23 LAND OF LIVING R SELMA-ET USA000068019211

Born: 06-13-2007
Breeder & Owner: JOHN AYARS & SONS + DR KENNY MANION
4381 ROSEDALE RD
MECHANICSBURG OH 43044
740-857-1273

SELLING OPEN

PA: +1005M -0.07% +33F -0.08% +20P +16CM\$ +41NM\$
PTAT +1.8 PTI +114
ST SR BD DF RA TW RL FA
+3.2 +1.4 +1.6 +2.5 L0.6 +1.9 S0.5 S0.3
FU RH RW UC UD TP TL
+0.9 +1.6 +1.8 +0.7 S0.1 C1.3 -0.1

RIPLEY FARMS R OAK ROYALTY-ET USA604259 14GU292

08/08 USDA PTA +1078M -0.05% +38F +68NM\$ 27NM%ile
-0.09% +20P +39CM\$ 89% Rel
AGA 08/08 PTAT +1.5 87% Rel PTI +117
ST SR BD DF RA TW RL FA
+4.6 +1.7 +1.4 +2.5 L2.4 +1.6 S1.1 S0.2
FU RH RW UC UD TP TL
+0.6 +1.3 +1.7 +1.0 S0.3 C0.7 +0.9

COULEE CREST TILLER SERENA USA000068000670

08/08 USDA PTA +932M -0.08% +27F +13NM\$ 34NM%ile
-0.06% +19P -8CM\$ 54% Rel
3 Rec YDev: +3005M +70F +63P
2 App 08/08 PTAT +2.1 51% Rel CPI +106
Appraisal: 90 @ 3-07 (90/87)
ST SR BD DF RA TW RL FA FU RH RW UC UD TP TL
30 26 32 43 21 38 33 29 26 33 35 27 23 34 22
2-02 299D 2X 20710M 4.0% 833F 3.0% 629P 76
3-02 365D 2X 25010M 4.1% 1013F 3.4% 854P 91
4-06 305D 2X 28970M 3.8% 1104F 3.2% 914P 90
ALL-AMERICAN JR. 2-YEAR-OLD 2005
NOM. ALL-AMERICAN SPRING YEARLING 2004
1ST JR 2-YEAR-OLD NGS-MADISON & NGS-LOUISVILLE 2005

SOUTHERN JUSTICE BANGER SAMSON @ SELECT SIRE
LAND OF LIVING R SKY 1ST FALL CALF OH STATE FAIR 2008

7TH DAM: BEAUTY VIEW VICTORY STAR USA000002966057

Appraisal: 90 @ 5-00
4-01 365D 2X 22260M 4.3% 964F 3.2% 703P DHIA
RES. GRAND CHAMPION NE STATE FAIR 1993
1ST 4-YEAR-OLD IA STATE FAIR 1993

8TH DAM: BEAUTY VIEW FAYETTES SKIPPY USA2790688

Appraisal: 84 @ 5-01
8-08 365D 2X 18510M 3.6% 674F 3.5% 639P DHIA
2404D 110,720M 3.9% 4,326F 1.9% 2,074P LIFE

JENSGOLDEN PROKING ROYAL OAK USA602216 7GU330

08/08 USDA PTA +487M +0.08% +35F +64NM\$ 22NM%ile
+0.00% +17P +67CM\$ 96% Rel
AGA 08/08 PTAT +2.2 95% Rel PTI +135

RIPLEY FARMS ENHANCER RAINBOW-ET USA000003051803

08/08 USDA PTA +1363M -0.11% +40F +38NM\$ 42NM%ile
-0.12% +22P -5CM\$ 66% Rel
2 App 08/08 PTAT +1.3 65% Rel CPI +93
Appraisal: 90 @ 4-09
4-01 305D 3X 26850M 4.2% 1139F 2.8% 757P DHIA

TROTACRE LORAL TILLER-ET USA000000603341 7GU360

08/08 USDA PTA +625M +0.02% +32F -64NM\$ 9NM%ile
-0.04% +13P -77CM\$ 98% Rel
AGA 08/08 PTAT +2.8 97% Rel PTI +123

COULEE CREST LUXURY SELMA-ET USA000003080660

08/08 USDA PTA +420M -0.06% +8F -11NM\$ 28NM%ile
-0.04% +7P -24CM\$ 55% Rel
2 Rec YDev: -987M -19F -28P
1 App 08/08 PTAT +1.0 50% Rel CPI +28
Appraisal: 84 @ 2-07 (84/86)
2-01 305D 3X 14950M 4.9% 727F 3.3% 500P 94

COULEE CREST TURLEY SIERRA 80 @ 2-04 (80/85)

3RD DAM: COULEE CREST TRUMPET SABLE-ET USA3062141

Appraisal: 82 @ 2-02

4TH DAM: COULEE CREST ENHANCER SNOW-ET USA3050736

Appraisal: 88 @ 2-08
1-11 305D 2X 18550M 6.1% 1139F* 3.7% 680P DHIA
2-01 365D 2X 21059M 6.3% 1319F 3.7% 784P DHIA
NOM. ALL-AMERICAN JR. 2-YEAR-OLD
DAM OF COULEE CREST LUXURY SPIDER-ET & SKIPPER-ET

5TH DAM: FORHAR MAGIC SHOW USA000003034573

Appraisal: 88 @ 2-09
2-03 365D 2X 27610M* 5.0% 1371F* 3.6% 986P* DHIA
COULEE CREST ENHANCER STORM-ET PTI +57

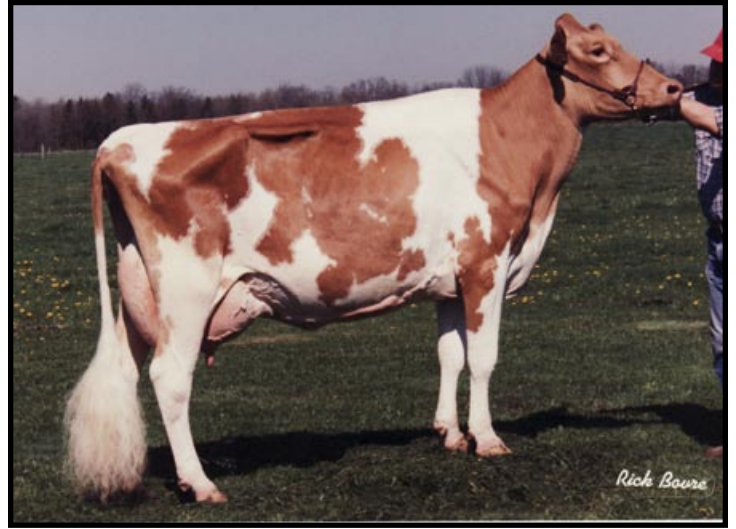
6TH DAM: BEAUTY VIEW SMOKEY SHAWN USA3002574

Appraisal: 93 @ 4-02
3-02 365D 2X 25680M 3.9% 995F 3.2% 831P DHIA



Forhar Magic Show VG-88

2-03 365D 27,610M 5.0% 1,371F 3.6% 986P
4th Dam of Lot 23



Beauty View Smokey Shawn EX-93

Res. All-American Fall Yearling & Sr. 3-Year-Old
5th Dam of Lot 23