

**LOT A FOUR WINDS TILLER DAME****USA000068010684**

Born: 04-08-2006 Tattoo LE 1228 RE  
 Breeder & Owner: CLARK & JOY VILTER  
 FOUR WINDS FARM  
 N56 W 30020 HWY K  
 HARTLAND WI 53029  
 262-367-2803

FRESH: 06-01-08

RES. JR. CHAMPION NJS-LOUISVILLE 2007  
 1ST SPRING YEARLING WI STATE FAIR 2007  
 4TH SPRING YEARLING NJS-MADISON 2007

DHI Herd # 35680390 Cow Control 00414  
 08/08 USDA PTA -11M +0.06% +10F +22NM\$ 37NM%ile  
 +0.03% +5P +34CM\$ 45% Rel  
 1 Rec YDev: +2043M -27F +54P  
 2-01 PROJ ME 19882M 760F 617P

**TROTACRE LORAL TILLER-ET USA000000603341 7GU360**  
 08/08 USDA PTA +625M +0.02% +32F -64NM\$ 9NM%ile  
 -0.04% +13P -77CM\$ 98% Rel  
 AGA 08/08 PTAT +2.8 97% Rel PTI +123  
 ST SR BD DF RA TW RL FA  
 +4.0 +2.2 +3.1 +3.3 H1.2 +3.5 P0.2 S0.9  
 FU RH RW UC UD TP TL  
 +1.5 +2.1 +2.5 +1.3 S0.1 C2.0 +0.2

**FOUR WINDS MM DEE DEE-ET USA000003063356**  
 08/08 USDA PTA -975M +0.23% -8F +8NM\$ 33NM%ile  
 +0.13% -11P +49CM\$ 63% Rel  
 5 Rec YDev: -1823M -14F -15P  
 3 App 08/08 PTAT +0.2 59% Rel CPI -1  
 Appraisal: 92 @ 7-04 (93/88)  
 2-02 302D 2X 12400M 4.4% 540F 3.4% 426P DHIA  
 3-02 320D 2X 16940M 4.8% 819F 3.4% 576P 100  
 4-04 325D 2X 18060M 4.7% 840F 3.4% 617P 99  
 5-04 357D 2X 23500M 4.5% 1062F 3.3% 771P 100  
 6-06 365D 2X 23190M 4.6% 1059F 3.4% 777P DHIA  
 NOM. ALL-AMERICAN AGED COW 2006  
 HM ALL-AMERICAN FALL CALF 2000  
 5TH 5-YEAR-OLD NGS-MADISON 2005

FOUR WINDS BANGER DANDY 85 @ 5-02 (80/90)  
 4-04 324D 2X 15120M 4.6% 695F 3.6% 543P 100  
 FOUR WINDS TILLER DESIRE 89 @ 2-04 (90/90)  
 2-03 365D 2X 21210M 4.6% 973F 3.4% 727P DHIA  
 ALL-AMERICAN WINTER YEARLING 2006  
 NOM. ALL-AMERICAN SR. 2-YEAR-OLD 2007

**TROTACRE MERCURY LORAL-ET USA000000602121 7GU322**  
 08/08 USDA PTA -18M +0.00% +0F -154NM\$ 0NM%ile  
 -0.01% -2P -157CM\$ 97% Rel  
 AGA 08/08 PTAT +1.5 96% Rel PTI +22

**GREENWOOD M TILLIE-ET USA000003013942**  
 08/08 USDA PTA +846M -0.07% +26F -27NM\$ 24NM%ile  
 -0.05% +18P -44CM\$ 66% Rel  
 2 App 08/08 PTAT +1.4 66% Rel CPI +75  
 Appraisal: 90 @ 3-03  
 2-01 365D 2X 31730M\* 4.1% 1290F\* 3.1% 980P\* DHIA

**FOUR WINDS MAGICMAN-ET USA000000602265 72GU120**  
 08/08 USDA PTA -110M +0.07% +6F -36NM\$ 9NM%ile  
 +0.03% +1P -26CM\$ 97% Rel  
 AGA 08/08 PTAT +1.3 95% Rel PTI +42

**WESTLYNN TOM DEE USA000002963901**  
 08/08 USDA PTA -1711M +0.41% -15F -125NM\$ 6NM%ile  
 +0.21% -25P -65CM\$ 82% Rel  
 4 Rec YDev: -2635M -7F -25P  
 1 App 08/08 PTAT -0.4 76% Rel CPI -55  
 Appraisal: 96 @ 10-05  
 2-06 312D 2X 10630M 4.5% 475F 3.9% 417P DHIA  
 4-06 306D 2X 17490M 4.7% 815F 3.7% 640P DHIA  
 5-11 365D 2X 26540M 4.8% 1284F 3.6% 961P DHIA  
 7-09 365D 2X 25350M 4.8% 1222F 3.5% 892P DHIA  
 9-08 365D 2X 25890M 4.5% 1172F 3.5% 905P DHIA  
 1807D 110,740M 4.7% 5,208F 3.6% 4,001P LIFE

FOUR WINDS DEEMAND-ET PTI +27  
 FOUR WINDS FAY D TOM-ET PTI -6  
 FOUR WINDS MAGICMAN DELIGHT 94 @ 7-01 (94/89)  
 5-00 365D 2X 27520M 4.9% 1344F 3.3% 919P DHIA  
 FOUR WINDS FAY DEE DANCER-ET 94 @ 8-03 (95/96)  
 6-00 365D 2X 26270M 4.3% 1127F 3.2% 832P DHIA  
 FOUR WINDS MM DEE DESTINY-ET 93 @ 4-06 (92/92)  
 4-00 365D 2X 25410M 4.8% 1210F 3.3% 842P DHIA  
 FOUR WINDS ENHANCER DIAMOND-ET 92 @ 5-06  
 3-08 365D 2X 21610M 4.5% 979F 3.4% 732P DHIA  
 FOUR WINDS DEE SHARP DESIGN-ET 92 @ 4-00 (91/90)  
 3-04 305D 2X 19850M 4.8% 950F 3.3% 655P 100  
 FOUR WINDS ENHANCER DIEDRA-ET 92 @ 4-09  
 4-01 305D 2X 24850M 4.5% 1118F 3.2% 784P DHIA  
 FOUR WINDS FAYETTE DEE-ET 90 @ 2-08  
 2-05 305D 2X 17700M 4.6% 820F 3.4% 596P DHIR  
 FOUR WINDS E DEE DAZZLE-ET 90 @ 4-04 (90/88)  
 4-10 329D 2X 18510M 4.5% 840F 3.4% 630P 99  
 FOUR WINDS MM DEE DEITY-ET 90 @ 5-06 (91/82)  
 3-10 365D 2X 19840M 5.1% 1006F 3.6% 705P DHIA  
 FOUR WINDS FAYETTE DOVE-ET 90 @ 4-05  
 3-02 332D 2X 16090M 4.5% 729F 3.8% 604P DHIA  
 FOUR WINDS DEE DREAMY-ET 90 @ 3-07 (90/90)  
 FOUR WINDS ENHANCER DEE DAWN-ET 88 @ 3-11 (88/88)  
 PINE DRIVE ENHANCER JOYDEE-ET 88 @ 3-05  
 FOUR WINDS FAY DEE DASHING-ET 86 @ 2-11 (86/87)  
 FOUR WINDS DEE DEBONAIR-ET 86 @ 3-08 (81/90)  
 FOUR WINDS MM DEE MAY DAY-ET 85 @ 2-01  
 FOUR WINDS E TOM DEES DREAM-ET 85 @ 2-05 (84/87)  
 PINE DRIVE ENHANCER DEE DEE-ET 84 @ 5-01  
 FOUR WINDS DEE SHARP DESIGNER-ET 81 @ 2-03 (81/86)  
 FOUR WINDS ENHANCER DESIRE-ET 80 @ 3-09

**LOT B FOUR WINDS MM DREAMY****USA000068013102**

Born: 07-27-2006 Tattoo LE 1232

FRESH: 08-05-08

Breeder &amp; Owner: CLARK &amp; JOY VILTER

FOUR WINDS FARM  
N56 W 30020 HWY K  
HARTLAND WI 53029  
262-367-2803

PA: -684M +0.12% -12F +0.07% -12P -135CM\$ -155NM\$  
PTAT +1.0 PTI -16  
ST SR BD DF RA TW RL FA  
+3.0 +1.9 +1.4 -0.1 H0.2 +1.9 S0.1 S0.6  
FU RH RW UC UD TP TL  
+1.6 +0.4 -0.3 -0.5 S1.7 W0.6 +1.1

**FOUR WINDS MAGICMAN-ET USA000000602265 72GU120**

08/08 USDA PTA -110M +0.07% +6F -36NM\$ 9NM%ile  
+0.03% +1P -26CM\$ 97% Rel  
AGA 08/08 PTAT +1.3 95% Rel PTI +42  
ST SR BD DF RA TW RL FA  
+3.4 +2.2 +1.8 +0.5 H0.4 +2.7 S0.5 S0.9  
FU RH RW UC UD TP TL  
+1.9 +0.9 +0.0 -0.8 S2.0 W1.4 +1.2

**FOUR WINDS FAYETTE DREAM USA0000003076976**

08/08 USDA PTA -1257M +0.17% -30F -273NM\$ 0NM%ile  
+0.10% -25P -243CM\$ 57% Rel  
4 Rec YDev: -3239M -83F -59P  
3 App 08/08 PTAT +0.7 55% Rel CPI -74  
Appraisal: 90 @ 4-04 (90/90)  
2-03 319D 2X 13450M 4.3% 582F 3.4% 464P 100  
3-03 317D 2X 14410M 4.8% 689F 3.7% 538P 100  
4-02 303D 2X 12380M 4.8% 591F 3.8% 467P 99

FOUR WINDS MM DREAMER 86 @ 2-07 (90/87)

**NELLS GLOW ADMIRAL MAGIC USA000000598858 1GU305**

08/08 USDA PTA +512M -0.06% +13F +29NM\$ 13NM%ile  
-0.03% +11P +19CM\$ 99% Rel  
AGA 08/08 PTAT +0.3 99% Rel PTI +25

**FOUR WINDS B T BLOSSOM USA0000002899922**

08/08 USDA PTA -900M +0.09% -25F -220NM\$ 1NM%ile  
+0.06% -20P -204CM\$ 70% Rel  
2 App 08/08 PTAT +0.0 65% Rel CPI -61  
Appraisal: 93 @ 8-09  
7-02 365D 2X 24710M 4.3% 1060F 3.6% 878P DHIA

**DUTCH MILL TELESTARS FAYETTE USA591871 21GU247**

08/08 USDA PTA -716M -0.01% -34F -258NM\$ 0NM%ile  
+0.01% -22P -258CM\$ 99% Rel  
AGA 08/08 PTAT +0.7 99% Rel PTI -65

**FOUR WINDS DEE DREAMY-ET USA0000003064963**

08/08 USDA PTA -940M +0.22% -7F -198NM\$ 2NM%ile  
+0.10% -16P -170CM\$ 58% Rel  
2 Rec YDev: -1346M +5F -21P  
2 App 08/08 PTAT +0.6 56% Rel CPI -30  
Appraisal: 90 @ 3-07 (90/90)  
2-02 316D 2X 13990M 4.5% 629F 3.2% 451P 100  
*RES. ALL-AMERICAN SR. 3-YEAR-OLD 2003*  
*RES. ALL-AMERICAN WINTER YEARLING 2001*  
*1ST SR. 3-YEAR-OLD NGS-MADISON 2003*  
*4TH SR. 2-YEAR-OLD NGS-MADISON 2002*

**3RD DAM: WESTLYNN TOM DEE USA0000002963901**

Appraisal: 96 @ 10-05  
5-11 365D 2X 26540M 4.8% 1284F 3.6% 961P DHIA  
7-09 365D 2X 25350M 4.8% 1222F 3.5% 892P DHIA  
9-08 365D 2X 25890M 4.5% 1172F 3.5% 905P DHIA  
1807D 110,740M 4.7% 5,208F 3.6% 4,001P LIFE  
*ALL-AMERICAN AGED COW 1994, 1995 & 1996*  
*ALL-AMERICAN 4-YEAR-OLD 1993*  
*RES. ALL-AMERICAN SR. 2-YEAR-OLD 1991*  
*GRAND CHAMPION NGS-MADISON 1993, 1994, 1995, 1996*  
*GRAND CHAMPION NGS-LOUISVILLE 1996*  
*DAM OF ALL-AMERICAN PRODUCE 2002, 2003 & 2005*  
*DAM OF RES. ALL-AMERICAN PRODUCE 2006*  
*RES. SUPREME CHAMPION WORLD DAIRY EXPO 1996*  
*WINNER GUERNSEY JOURNAL GREAT COW CONTEST*  
*ALL-BREED, ALL-TIME SUPREME CHAMPION*  
*HOARD'S DAIRYMAN JUDGING CONTEST 2005*



**Westlynn Tom Dee EX-96**

5X National Grand Champion  
4X All-American

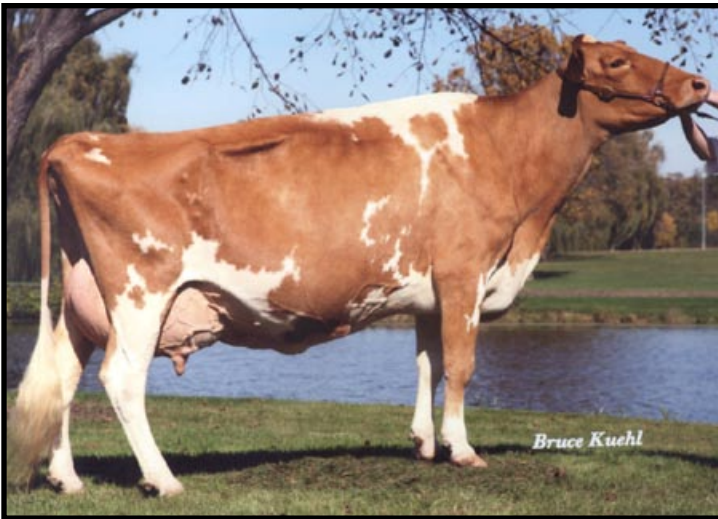
Granddam of Lot A - 3rd Dam of Lot B



**Four Winds Destiny Child EX-95**

4-02 365D 28,090M 4.3% 1,197F 3.0% 851P  
4X All-American

Maternal Family Member to Lots A & B



**Four Winds MM Dee Dee EX-92**

Nominated AA Aged Cow 2006  
Dam of Lot A



**Four Winds Enhancer Diamond EX-92**

Four-Time All-American Nominee  
Daughter of Tom Dee



**Four Winds Dee Sharp Design-ET EX-92**

HM All-American Sr. 3-year-old 2006  
Daughter of Tom Dee

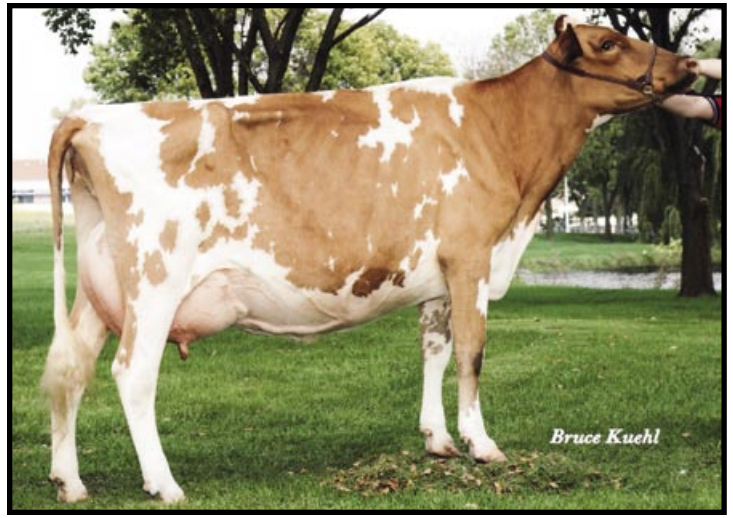


**Four Winds Magicman Delight EX-94**

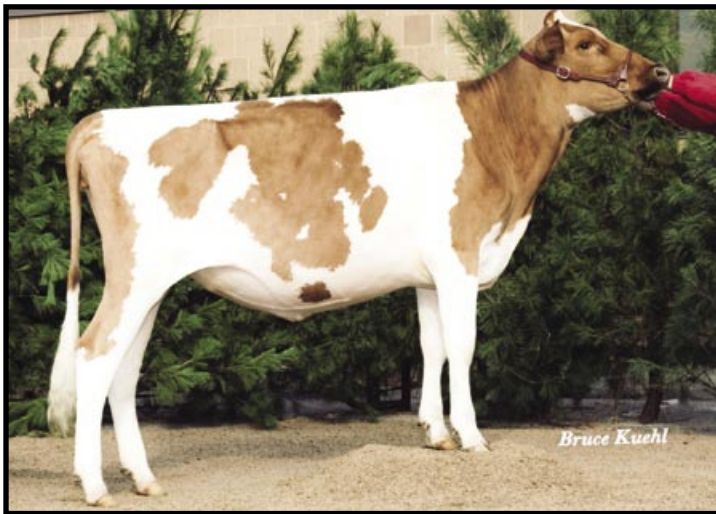
Twice Grand Champion at Madison  
Daughter of Tom Dee



**Four Winds MM Dee Destiny EX-93**  
Three Time All-American in Milking Form!  
Daughter of Tom Dee



**Four Winds Tiller Desire VG-89**  
Nom. All-American Sr. 2-Year-Old 2007  
Full Sister to Lot A



**Four Winds Tiller Dame**  
Res. Jr. Champion NJS-Louisville 2007  
Sells as Lot A