

LOT #1 IDLE GOLD SPIDER CHARLOTTE-ET USA000068016749

Born: 04-07-2007 Tattoo LE I367
Breeder & Owner: NEIL & JANICE JENSEN
IDLE GOLD GUERNSEYS
1938 25TH ST
COMSTOCK WI 54826
715-822-5338

SELLING OPEN

JOHNES VACCINATE

#3 PA CPI INDEX HEIFER IN THE BREED APRIL '08
2 SISTERS CONTRACTED FOR EMBRYOS TO ENGLAND

PA: +1502M -0.04% +60F -0.02% +45P +231CM\$ +233NM\$
PTAT +1.8 PTI +206
ST SR BD DF RA TW RL FA
+5.0 +2.2 +2.5 +3.4 L1.2 +2.4 P0.2 S0.5
FU RH RW UC UD TP TL
+1.0 +3.2 +3.0 +0.4 D0.1 C0.6 -0.4

COULEE CREST LUXURY SPIDER-ET USA604229 1GU415

03/08 USDA PTA +906M +0.02% +43F +137NM\$ 50NM%ile
+0.03% +34P +151CM\$ 82% Rel
AGA 03/08 PTAT +1.3 76% Rel PTI +142
ST SR BD DF RA TW RL FA
+5.5 +1.8 +2.2 +3.1 L1.1 +1.9 S0.2 S0.1
FU RH RW UC UD TP TL
+0.8 +3.0 +2.0 -0.5 S0.6 C1.5 -2.0

IDLE GOLD ROYAL CONTESSA-ET USA000003069270

03/08 USDA PTA +2097M -0.09% +76F +329NM\$ 98NM%ile
-0.07% +56P +310CM\$ 59% Rel
4 Rec YDev: +5604M +199F +149P
3 App 03/08 PTAT +2.3 57% Rel CPI +265
Appraisal: 88 @ 5-10 (86/88)
ST SR BD DF RA TW RL FA FU RH RW UC UD TP TL
42 45 30 44 29 50 28 33 29 35 50 35 9 19 32
Gold Star Dam - 2006
2-03 305D 2X 22960M 3.3% 766F 3.0% 678P 92
3-06 365D 2X 30770M 4.1% 1250F 3.1% 957P 93
5-02 365D 2X 39960M* 4.5% 1780F 3.0% 1285P 93
6-07 317D 2X 22700M 4.6% 1040F 3.3% 740P 91
1768D 137,990M 4.2% 5,815F 3.1% 4,337P LIFE
#1 CPI COW APRIL '08

IDLE GOLD M CHRISTIAN @ SELECT SIRES
IDLE GOLD JGS CAMDEN-ET @ ACCELERATED
IDLE GOLD RONALD CINDERELLA 88 @ 2-10 (88/85)
2-02 365D 2X 26640M 3.7% 993F 3.0% 790P 95
FORMER TOP 10 CPI COW

LOT 2

Selling 4 #1 embryos from
Idle Gold Royal Contessa and Sniders Option Aaron.
Buyer responsible for cost and liability of shipping.



TROTACRE JAY MR LUXURY-ET USA000000602751 7GU339

03/08 USDA PTA +1017M -0.12% +24F +210NM\$ 68NM%ile
-0.03% +28P +202CM\$ 97% Rel
AGA 03/08 PTAT +1.1 95% Rel PTI +116

COULEE CREST ENHANCER SNOW-ET USA000003050736

03/08 USDA PTA +964M +0.08% +56F +115NM\$ 68NM%ile
-0.05% +22P +99CM\$ 72% Rel
1 Rec YDev: +1833M +201F +54P
1 App 03/08 PTAT +1.4 69% Rel CPI +130
Appraisal: 88 @ 2-08
2-01 365D 2X 21059M 6.3% 1319F 3.7% 784P DHIA

JENSGOLDEN PROKING ROYAL OAK USA602216 7GU330

03/08 USDA PTA +479M +0.09% +36F +72NM\$ 22NM%ile
+0.01% +18P +78CM\$ 96% Rel
AGA 03/08 PTAT +2.1 95% Rel PTI +134

PAFARMS FORTRESS CASSANDRA USA000003042855

03/08 USDA PTA +1721M -0.09% +59F +329NM\$ 98NM%ile
-0.05% +47P +316CM\$ 67% Rel
2 Rec YDev: +5324M +194F +155P
3 App 03/08 PTAT +1.7 66% Rel CPI +209
Appraisal: 89 @ 3-07
2-01 365D 2X 30530M* 3.9% 1203F 3.4% 1052P* DHIA
3-04 363D 2X 30970M 4.0% 1250F 3.0% 943P 98
FORMER #1 CPI COW
IDLE GOLD E CHALLENGE-ET @ GENEX PTI +162
IDLE GOLD ROYAL CROWN-ET @ SELECT SIRES PTI +106

3RD DAM: PAFARMS SMOKEY CLAREESA-ET USA3025710

Appraisal: 90 @ 5-05 Gold Star Dam - 1999
5-01 365D 2X 21425M 4.4% 942F 3.7% 803P DHIA
7-01 365D 2X 23290M 4.4% 1018F 3.2% 741P DHIA
RES. JR ALL-AMERICAN FALL CALF 1994
NOM. JR. ALL-AMERICAN SR. 3-YEAR-OLD 1996
NOM. JR. ALL-AMERICAN 4-YEAR-OLD 1997

DAUGHTERS:

PAFARMS HARPOON CHERRY-ET 90 @ 3-11
3-07 365D 2X 20586M 4.7% 974F 3.8% 782P DHIA
RES. JR. ALL-AMERICAN SR. 2-YEAR-OLD 1998
HM JR. ALL-AMERICAN 4-YEAR-OLD 2000
PAFARMS FARO CAMERO 91 @ 7-04 (90/88)
5-04 305D 2X 20100M 4.6% 926F 3.5% 713P 100
RES. ALL-AMERICAN DAM & DAUGHTER 2007

4TH DAM: PAFARMS FRANK CORY USA000002959397

Appraisal: 81 @ 3-10 Gold Star Dam - 1993
4-01 365D 2X 23080M 5.0% 1154F 3.7% 850P DHIA
5-05 365D 2X 20930M 4.7% 994F 3.4% 717P DHIA
4TH SR. 2-YEAR-OLD NJS-MADISON 1991

PAFarms Aliance Corvair VG-84

#81 On The April '08 CPI List

Member Res. All-American Dam/Daughter 2007
Dam is an EX-91 Maternal Sister to Cassandra



Idle Gold Royal Contessa-ET VG-88

5-02 365D 39,960M 4.5% 1780F 3.0% 1285P #1 CPI Cow April '08
Dam of Lot 1 & 2



PAFarms Fortress Cassandra VG-89

3-04 363D 30,970M 4.0% 1,250F 3.0% 943P
Granddam of Lot 1 & 2



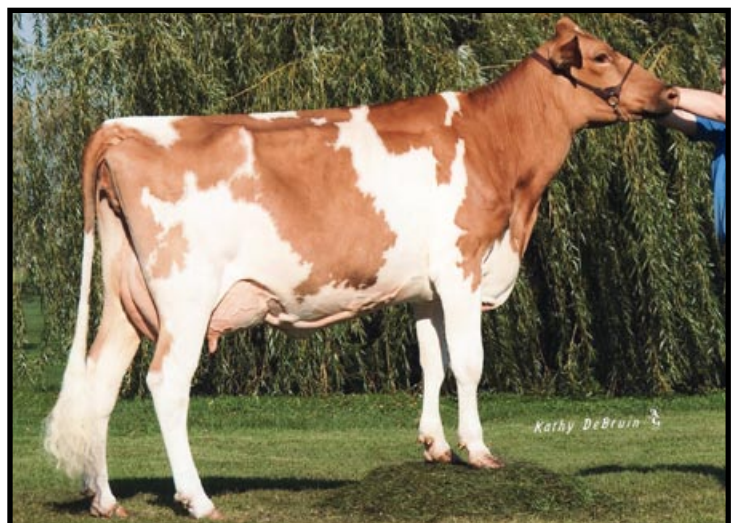
PAFarms Smokey Claresa-ET EX-90

7-01 365D 23,290M 4.4% 1,018F 3.2% 741P
3rd Dam of Lot 1 & 2



PAFarms Harpoon Cherry EX-90

3-07 365D 20,586M 4.7% 974F 3.8% 782P
Maternal Family Member of Lot 1 & 2



PAFarms Tiller Charger VG-86

#50 On The April '08 CPI List
Maternal Family Member of Lot 1 & 2