



Westlynn Tom Dee EX-96

5X National Grand Champion
4X All-American

Her Clone is Dam of Lot 13



Four Winds Destiny Child EX-95

4-02 365D 28,090M 4.3% 1,197F 3.0% 851P
4X All-American

Maternal Family Member to Lots 13 - 15

LOT 13 EMBRYOS FROM WESTLYNN TOM DEE-CL3 - TOM DEE'S CLONE

Breeder & Owner: CLARK & JOY VILTER
FOUR WINDS FARM
N56 W 30020 HWY K
HARTLAND WI 53029
262-367-2803

Selling 5 #1 DT embryos from Tom Dee CL3 by Ace.
Buyer responsible for cost and liability of shipping.

KNAPPS PERFECTO ACE-ET USA000000602569

03/08 USDA PTA -524M +0.04% -16F +187NM\$ 68NM%ile
+0.03% -13P +194CM\$ 81% Rel
AGA 03/08 PTAT +1.8 88% Rel PTI +50
ST SR BD DF RA TW RL FA
+1.3 +0.2 -0.3 +0.4 H0.2 -0.2 P0.3 S0.4
FU RH RW UC UD TP TL
+1.5 +0.9 +1.0 +3.1 S2.3 C1.0 +1.0

WESTLYNN TOM DEE-CL3 USA0000003078333

03/08 USDA PTA -876M +0.13% -18F -166NM\$ 3NM%ile
+0.00% -22P -155CM\$ 41% Rel
2 Rec YDev: -2282M -17F -44P
3 App 03/08 PTAT -0.4 42% Rel CPI -68
Appraisal: 90 @ 5-00 (88/90)
ST SR BD DF RA TW RL FA FU RH RW UC UD TP TL
50 47 37 30 21 42 32 24 23 25 34 31 29 30 35
3-10 325D 2X 16810M 5.1% 857F 3.3% 558P 100
4-11 305D 2X 16760M 4.6% 775F 3.5% 589P 99
A CLONE OF TOM DEE, EX-96 !

LILY LANE PENNY PERFECTO-ET USA000000598133 1GU296

03/08 USDA PTA -199M -0.05% -17F +89NM\$ 27NM%ile
+0.01% -4P +93CM\$ 99% Rel
AGA 03/08 PTAT +1.1 99% Rel PTI +40

PINEBREEZE TELESTAR ANDORA USA0000002891647

03/08 USDA PTA -692M +0.03% -26F -55NM\$ 18NM%ile
-0.02% -26P -65CM\$ 71% Rel
4 Rec YDev: -921M -20F -32P
3 App 03/08 PTAT +0.8 70% Rel CPI -49
Appraisal: 95 @ 8-05
6-05 365D 2X 26740M 4.7% 1261F 3.0% 811P DHIA

WESTLYNN EMORY TOM USA000000598878

03/08 USDA PTA -1624M +0.08% -60F -392NM\$ 0NM%ile
+0.01% -51P -394CM\$ 55% Rel
AGA 03/08 PTAT -0.5 59% Rel PTI -187

WESTLYNN PEPPER DELIGHT USA0000002891229

03/08 USDA PTA -1824M +0.32% -34F -245NM\$ 0NM%ile
+0.15% -38P -205CM\$ 60% Rel
3 Rec YDev: -3516M -67F -62P
2 App 03/08 PTAT -1.3 54% Rel CPI -128
Appraisal: 79 @ 4-01
2-04 305D 2X 13150M 4.6% 610F 3.7% 487P DHIR
3-09 343D 2X 16520M 4.6% 767F 4.0% 653P DHIA
4-11 358D 2X 16500M 5.6% 924F 3.8% 635P DHIA

WESTLYNN AD JO DELLA 78 @ 3-01
2-04 289D 2X 11720M 5.3% 623F 3.8% 445P DHIR
WESTLYNN TOM DEE 96 @ 10-05
5-11 365D 2X 26540M 4.8% 1284F 3.6% 961P DHIA

3RD DAM: WESTLYNN F DEE USA0000002727564

Appraisal: 87 @ 6-01
7-10 305D 2X 16500M 4.6% 760F 3.1% 518P DHIR
2ND SPRING YEARLING NGS-PUYALLUP 1978

4TH DAM: HILL KREST F MARANDA USA0000002584879

Appraisal: 87 @ 10-04
5-08 325D 2X 15940M 5.0% 797F DHIA
2390D 100,570M 4.9% 4,891F LIFE

WESTLYNN TOM DEE Appraisal: 96 @ 10-05

2-06 312D 2X 10630M 4.5% 475F 3.9% 417P DHIA
4-06 306D 2X 17490M 4.7% 815F 3.7% 640P DHIA
5-11 365D 2X 26540M 4.8% 1284F 3.6% 961P DHIA
7-09 365D 2X 25350M 4.8% 1222F 3.5% 892P DHIA
9-08 365D 2X 25890M 4.5% 1172F 3.5% 905P DHIA
1807D 110,740M 4.7% 5,208F 3.6% 4,001P LIFE

TOM DEE'S OFFSPRING:

FOUR WINDS DEEMAND-ET PTI +15
FOUR WINDS MAGICMAN DELIGHT 94 @ 7-01 (94/89)
5-00 365D 2X 27520M 4.9% 1344F 3.3% 919P DHIA
FOUR WINDS FAY DEE DANCER-ET 94 @ 8-03 (95/96)
6-00 365D 2X 26270M 4.3% 1127F 3.2% 832P DHIA
FOUR WINDS MM DEE DESTINY-ET 93 @ 4-06 (92/92)
4-00 365D 2X 25410M 4.8% 1210F 3.3% 842P DHIA
FOUR WINDS ENHANCER DIEDRA-ET 92 @ 4-09
4-01 305D 2X 24850M 4.5% 1118F 3.2% 784P DHIA
FOUR WINDS ENHANCER DIAMOND-ET 92 @ 5-06
3-08 365D 2X 21610M 4.5% 979F 3.4% 732P DHIA
FOUR WINDS DEE SHARP DESIGN-ET 92 @ 4-00 (91/90)
3-04 305D 2X 19850M 4.8% 950F 3.3% 655P 100
FOUR WINDS MM DEE DEE-ET 92 @ 7-04 (93/88)
6-06 365D 2X 23190M 4.6% 1059F 3.4% 777P DHIA
FOUR WINDS E DEE DAZZLE-ET 90 @ 4-04 (90/88)
4-10 329D 2X 18510M 4.5% 840F 3.4% 630P 99
FOUR WINDS DEE DREAMY-ET 90 @ 3-07 (90/90)
2-02 316D 2X 13990M 4.5% 629F 3.2% 451P 100
FOUR WINDS MM DEE DEITY-ET 90 @ 5-06 (91/82)
3-10 365D 2X 19840M 5.1% 1006F 3.6% 705P DHIA
FOUR WINDS FAYETTE DEE-ET 90 @ 2-08
2-05 305D 2X 17700M 4.6% 820F 3.4% 596P DHIR
FOUR WINDS FAYETTE DOVE-ET 90 @ 4-05
3-02 332D 2X 16090M 4.5% 729F 3.8% 604P DHIA
FOUR WINDS ENHANCER DEE DAWN-ET 88 @ 3-11 (88/88)
3-02 286D 2X 13960M 4.5% 625F 3.4% 469P 98
PINE DRIVE ENHANCER JOYDEE-ET 88 @ 3-05
3-01 305D 2X 16970M 5.9% 994F 3.8% 641P DHIA
FOUR WINDS FAY DEE DASHING-ET 86 @ 2-11 (86/87)
2-04 302D 2X 13320M 4.6% 607F 3.0% 406P DHIA
FOUR WINDS DEE DEBONAIR-ET 86 @ 3-08 (81/90)
3-00 327D 2X 19100M 4.6% 877F 3.5% 660P 99
FOUR WINDS MM DEE MAY DAY-ET 85 @ 2-01
2-00 305D 2X 14010M 4.2% 592F 3.2% 449P DHIA
PINE DRIVE ENHANCER DEE DEE-ET 84 @ 5-01
3-00 305D 2X 13710M 6.0% 829F 4.0% 546P DHIA
FOUR WINDS DEE SHARP DESIGNER-ET 81 @ 2-03 (81/86)
FOUR WINDS ENHANCER DESIRE-ET 80 @ 3-09
3-07 305D 3X 17300M 4.6% 795F 3.5% 613P DHIA

TOM DEE'S SHOW WINNINGS

ALL-AMERICAN AGED COW 1994, 1995 & 1996
ALL-AMERICAN 4-YEAR-OLD 1993
RES. ALL-AMERICAN SR. 2-YEAR-OLD 1991
GRAND CHAMPION NGS-MADISON 1993, 1994, 1995, 1996
GRAND CHAMPION NGS-LOUISVILLE 1996
DAM OF ALL-AMERICAN PRODUCE 2002, 2003 & 2005
DAM OF RES. ALL-AMERICAN PRODUCE 2006
RES. SUPREME CHAMPION WORLD DAIRY EXPO 1996
WINNER GUERNSEY JOURNAL GREAT COW CONTEST
ALL-BREED, ALL-TIME SUPREME CHAMPION
HOARD'S DAIRYMAN JUDGING CONTEST 2005



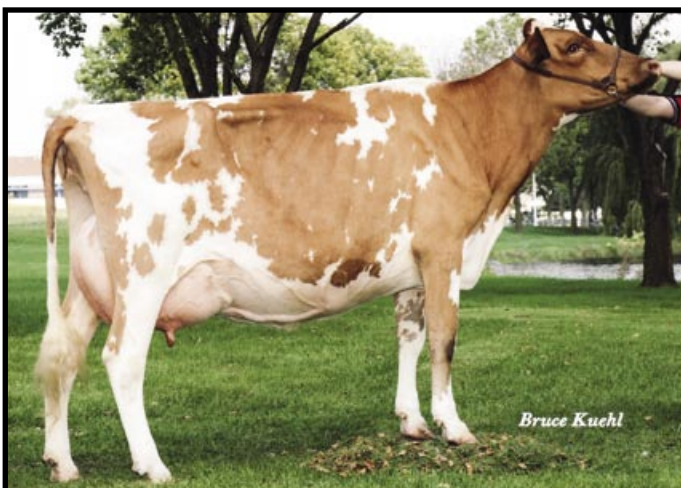
Four Winds Enhancer Diamond EX-92

Four-Time All-American Nominee
Maternal Family Member to Lots 13 - 15



Four Winds MM Dee Destiny EX-93

Three Time All-American in Milking Form!
Maternal Family Member to Lots 13 - 15

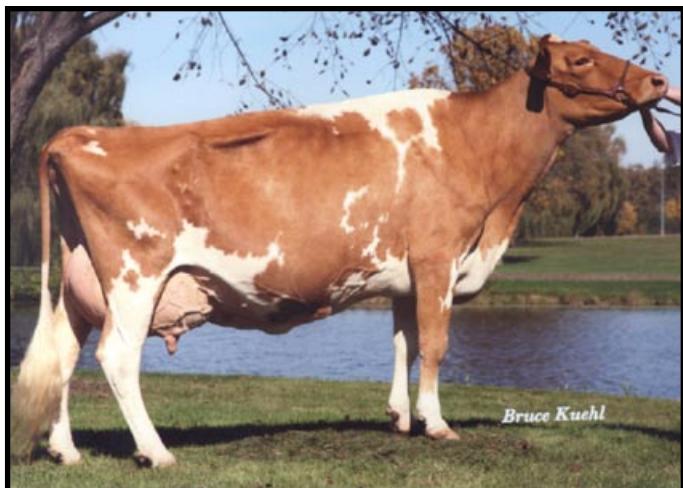


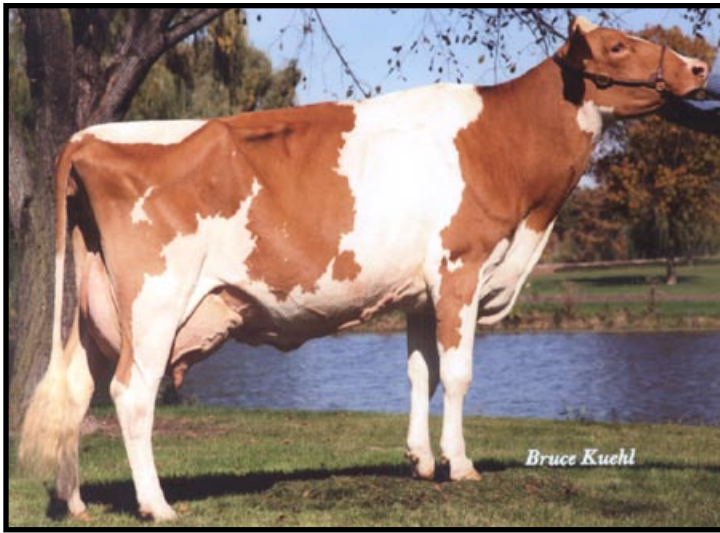
Four Winds Tiller Desire VG-89

Nom. All-American Sr. 2-Year-Old 2007
Maternal Family Member to Lots 13 - 15

Four Winds MM Dee Dee EX-92

Nominated AA Aged Cow 2006
Maternal Family Member to Lots 13 - 15





Four Winds Dee Sharp Design-ET EX-92

HM All-American Sr. 3-year-old 2006
Dam of Lot 14

LOT 14 FOUR WINDS HILLPOINT T DELIGHT-ET USA000068021642

Born: 03-01-2008 Tattoo LE HL2 RE HL2

Breeder: CLARK & JOY VILTER

HARTLAND WI

Owner: MICHAEL & LINDA HELLENBRAND

CITY SLICKERS FARM

5065 N. HILLPOINT RD

CROSS PLAINS WI 53528

608-798-1952

PA: +29M +0.13% +22F +0.03% +5P -14CM\$ -23NM\$

PTAT +1.9 PTI +81

ST SR BD DF RA TW RL FA

+3.1 +1.7 +2.3 +2.1 H0.6 +2.4 P0.3 S0.6

FU RH RW UC UD TP TL

+1.7 +1.7 +1.9 +1.0 S0.5 C1.8 +0.5

TROTACRE LORAL TILLER-ET USA000000603341 7GU360

03/08 USDA PTA +611M +0.02% +31F -34NM\$ 4NM%ile

-0.05% +12P -49CM\$ 98% Rel

AGA 03/08 PTAT +2.8 97% Rel PTI +124

ST SR BD DF RA TW RL FA

+3.9 +2.1 +3.1 +3.2 H1.3 +3.4 P0.3 S0.8

FU RH RW UC UD TP TL

+1.5 +2.2 +2.5 +1.2 S0.2 C1.9 +0.2

FOUR WINDS DEE SHARP DESIGN-ET USA000003078336

03/08 USDA PTA -554M +0.23% +12F -12NM\$ 28NM%ile

+0.10% -2P +21CM\$ 57% Rel

2 Rec YDev: -363M +77F +31P

2 App 03/08 PTAT +0.9 55% Rel CPI +37

Appraisal: 92 @ 4-00 (91/90)

ST SR BD DF RA TW RL FA FU RH RW UC UD TP TL

47 40 42 38 20 34 20 25 45 45 40 25 34 32 28

2-04 318D 2X 16110M 4.7% 757F 3.5% 560P 100

3-04 305D 2X 19850M 4.8% 950F 3.3% 655P 100

FRESH AGAIN @ 5-06 90# ON 2ND TEST

RES. ALL-AMERICAN FALL CALF 2003

ALL-AMERICAN FALL YEARLING 2004

HM ALL-AMERICAN SR. 3-YEAR-OLD 2006

RES. JR CHAMPION NGS-LOUISVILLE 2003

JR. CHAMPION NGS-LOUISVILLE 2004



Four Winds Magicman Delight EX-94

Twice Grand Champion at Madison
Maternal Family Member of Lots 13 - 15

SELLING OPEN

TROTACRE MERCURY LORAL-ET USA000000602121 7GU322

03/08 USDA PTA -24M +0.00% -2F -146NM\$ 0NM%ile

+0.00% -1P -147CM\$ 97% Rel

AGA 03/08 PTAT +1.5 96% Rel PTI +22

GREENWOOD M TILLIE-ET USA000003013942

03/08 USDA PTA +844M -0.07% +26F +3NM\$ 33NM%ile

-0.05% +18P -14CM\$ 66% Rel

2 App 03/08 PTAT +1.4 66% Rel CPI +78

Appraisal: 90 @ 3-03

2-01 365D 2X 31730M* 4.1% 1290F* 3.1% 980P* DHIA

TAG LANE IDEAL SHARP-ET USA000000601474 1GU201

03/08 USDA PTA +215M -0.01% +7F -54NM\$ 4NM%ile

-0.02% +4P -60CM\$ 97% Rel

AGA 03/08 PTAT +1.6 97% Rel PTI +23

WESTLYNN TOM DEE USA000002963901

03/08 USDA PTA -1707M +0.39% -17F -145NM\$ 5NM%ile

+0.20% -26P -87CM\$ 81% Rel

4 Rec YDev: -2629M -9F -26P

1 App 03/08 PTAT -0.5 76% Rel CPI -64

Appraisal: 96 @ 10-05

2-06 312D 2X 10630M 4.5% 475F 3.9% 417P DHIA

4-06 306D 2X 17490M 4.7% 815F 3.7% 640P DHIA

5-11 365D 2X 26540M 4.8% 1284F 3.6% 961P DHIA

7-09 365D 2X 25350M 4.8% 1222F 3.5% 892P DHIA

9-08 365D 2X 25890M 4.5% 1172F 3.5% 905P DHIA

1807D 110,740M 4.7% 5,208F 3.6% 4,001P LIFE

ALL-AMERICAN AGED COW 1994, 1995 & 1996

ALL-AMERICAN 4-YEAR-OLD 1993

RES. ALL-AMERICAN SR. 2-YEAR-OLD 1991

GRAND CHAMPION NGS-MADISON 1993, 1994, 1995, 1996

GRAND CHAMPION NGS-LOUISVILLE 1996

DAM OF ALL-AMERICAN PRODUCE 2002, 2003 & 2005

DAM OF RES. ALL-AMERICAN PRODUCE 2006

RES. SUPREME CHAMPION WORLD DAIRY EXPO 1996

WINNER GUERNSEY JOURNAL GREAT COW CONTEST

ALL-BREED, ALL-TIME SUPREME CHAMPION

HOARD'S DAIRYMAN JUDGING CONTEST 2005



Knapps Tiller Jadee-ET VG-87
 1-11 305D 24,548M 1,083F 733P Proj ME
 Dam of Lot 15

LOT 15 EMBRYOS FROM KNAPPS TILLER JADEE

Breeder & Owner: D RANDY KNAPP & FAMILY
 22257 PILOT GROVE RD
 EPWORTH IA 52045-9610
 563-876-3834

INDIAN ACRES AMERICAN PIE USA000068016348 31GU618

PA: +89M +0.09% +19F +0.05% +11P +203CM\$ +184N
 PTAT +1.1 PTI +100
 ST SR BD DF RA TW RL FA
 +1.9 +0.7 +0.5 +0.6 L0.1 +0.8 P0.5 S0.6
 FU RH RW UC UD TP TL
 +2.0 +1.6 +0.9 +0.0 S1.9 W0.1 +0.3

KNAPPS TILLER JADEE-ET USA000068016884

03/08 USDA PTA +371M +0.00% +17F -36NM\$ 22NM%ile
 -0.04% +6P -48CM\$ 43% Rel
 1 Rec YDev: +2587M +46F +41P
 Appraisal: 87 @ 2-07 (88/79)
 ST SR BD DF RA TW RL FA FU RH RW UC UD TP TL
 26 35 27 28 22 34 14 35 31 34 25 29 42 37 21
 1-11 305D 24548M 1083F 733P PROJ ME



Pine Drive Logic Jesse VG-88
 Grand Champion NGS-Sacramento 2003
 Maternal Sister to Granddam of Lot 15

Selling 5 #1 DT Stage 4&5 embryos from Jadee by American Pie.
 Buyer responsible for cost and liability of shipping.

IDLE GOLD E CHALLENGE-ET USA000000604268 1GU418

03/08 USDA PTA +180M +0.17% +36F +367NM\$ 95NM%ile
 +0.08% +20P +399CM\$ 75% Rel
 AGA 03/08 PTAT +1.4 71% Rel PTI +162

INDIAN ACRES MM PISTACHIO PIE USA000003076310

03/08 USDA PTA -2M +0.01% +2F +1NM\$ 32NM%ile
 +0.01% +2P +6CM\$ 54% Rel
 3 Rec YDev: +399M +19F +16P
 3 App 03/08 PTAT +0.8 33% Rel CPI +38
 Appraisal: 94 @ 5-00 (95/90)
 4-10 305D 2X 23650M 5.0% 1192F 3.6% 842P 99

TROTACRE LORAL TILLER-ET USA000000603341 7GU360

03/08 USDA PTA +611M +0.02% +31F -34NM\$ 4NM%ile
 -0.05% +12P -49CM\$ 98% Rel
 AGA 03/08 PTAT +2.8 97% Rel PTI +124

PINE DRIVE BOSSMAN JADE USA000003062230

03/08 USDA PTA -165M +0.11% +11F -4NM\$ 31NM%ile
 +0.02% -1P +5CM\$ 58% Rel
 2 Rec YDev: +117M +75F +21P
 3 App 03/08 PTAT +1.3 56% Rel CPI +42
 Appraisal: 90 @ 5-07 (92/90)
 4-06 365D 2X 23430M 5.3% 1234F 3.5% 818P DHIA
 6-08 305D 2X 24560M 5.1% 1242F 3.3% 803P 95

FROSTED BEAUTY JADES NEAT DEE-ET 82 @ 2-04 (83/77)
 FROSTED BEAUTY JADES STAR DEE-ET 73 @ 2-08 (76/70)

3RD DAM: PINE DRIVE ENHANCER JOYDEE-ET USA3044157

Appraisal: 88 @ 3-05
 3-01 305D 2X 16970M 5.9% 994F 3.8% 641P DHIA
 HER DTR:PINE DRIVE LOGIC JESSE 88 @ 2-07 (90/85)
 2-04 365D 2X 16010M 4.4% 701F 3.3% 521P 100
 GRAND CHAMPION NGS-SACRAMENTO 2003
 NOM. ALL-AMERICAN SR. 2-YEAR-OLD 2003

4TH DAM: WESTLYNN TOM DEE USA000002963901

Appraisal: 96 @ 10-05
 5-11 365D 2X 26540M 4.8% 1284F 3.6% 961P DHIA
 7-09 365D 2X 25350M 4.8% 1222F 3.5% 892P DHIA
 9-08 365D 2X 25890M 4.5% 1172F 3.5% 905P DHIA
 1807D 110,740M 4.7% 5,208F 3.6% 4,001P LIFE
 ALL-AMERICAN AGED COW 1994, 1995 & 1996
 ALL-AMERICAN 4-YEAR-OLD 1993
 GRAND CHAMPION NGS-MADISON 1993, 1994, 1995, 1996