



Laeschland Smokey Ophelia EX-90

6-02 344D 30,450M 4.4% 1,347F 3.3% 1,005P

Fourth Dam of Lot 31

LOT 31 ADAMS CREEK SKIPPER OPAL

Born: 06-01-2007 Tattoo LE N615
Breeder & Owner: ALYSSA & KATE NUTTLEMAN
N5775 CTH DE
BANGOR WI 54614
608-486-4573

PA: +567M -0.02% +22F -0.03% +13P +80CM\$ +90NM\$
PTAT +1.9 PTI +105
ST SR BD DF RA TW RL FA
+2.5 +0.8 +1.2 +2.2 L0.6 +1.1 P0.9 S0.2
FU RH RW UC UD TP TL
+1.2 +2.4 +2.0 +1.0 S0.7 C2.4 -1.5

COULEE CREST LUXURY SKIPPER-ET USA604230 200GU108

03/08 USDA PTA +786M -0.05% +25F +120NM\$ 40NM%ile
-0.05% +16P +103CM\$ 71% Rel
AGA 03/08 PTAT +1.6 68% Rel PTI +98
ST SR BD DF RA TW RL FA
+1.5 -0.4 -0.1 +1.9 L1.5 +0.0 P1.4 L0.4
FU RH RW UC UD TP TL
+1.2 +3.1 +1.8 +0.6 S1.1 C2.6 -2.6

ADAMS CREEK TILLER ODESSA USA000068006889

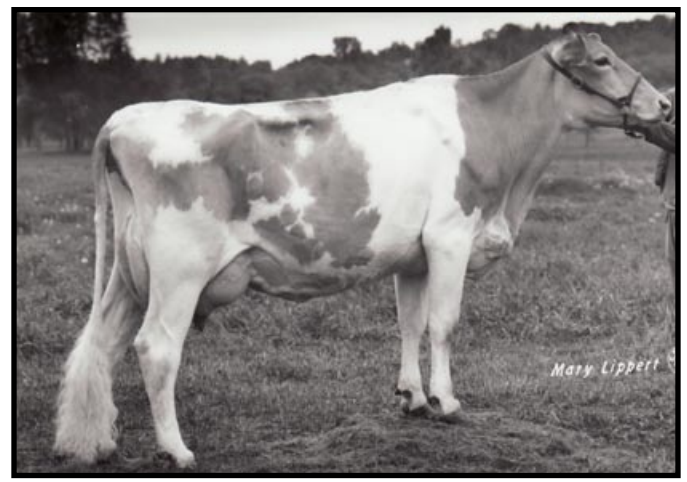
03/08 USDA PTA +347M +0.02% +19F +59NM\$ 50NM%ile
-0.01% +10P +57CM\$ 48% Rel
1 Rec YDev: +1535M +95F +60P
1 App 03/08 PTAT +2.2 45% Rel CPI +108
Appraisal: 86 @ 2-02 (85/85)
ST SR BD DF RA TW RL FA FU RH RW UC UD TP TL
36 34 32 33 20 28 24 29 30 35 37 28 28 30 15
2-01 305D 2X 19043M 4.9% 937F 3.4% 638P PROJ ME

5TH DAM: FAUVER HILL TEL ODETTE USA000002863997

Appraisal: 92 @ 7-05 Gold Star Dam - 1989
3-09 365D 2X 26600M* 4.6% 1227F* 3.5% 934P* DHIA
5-07 365D 2X 35090M* 5.1% 1781F* 3.4% 1196P* DHIA
9-06 365D 2X 29060M 4.5% 1306F 3.0% 885P DHIA
2293D 178,070M 5.0% 8,925F 3.7% 6,669P LIFE
FAUVER HILL VOLCANO ODESSA 86 @ 4-07
3-00 365D 2X 19790M 4.5% 881F 3.2% 634P DHIA
FAUVER HILL A OLIVIA-ET 89 @ 4-09 Gold Star Dam - 1996
3-11 365D 2X 23860M 5.6% 1337F* 3.5% 828P DHIA
FAUVER HILL A ONA-ET 87 @ 4-09
3-11 365D 2X 19060M 5.4% 1027F 3.5% 676P DHIA
LAESCHLAND VOLCANO OLIVIA 83 @ 3-01
5-00 305D 2X 23900M 4.3% 1017F 3.2% 762P DHIA
LAESCHLAND VOL ODESSEY 84 @ 3-10 Gold Star Dam - 1995
3-04 365D 2X 23700M 4.2% 994F 3.8% 892P DHIA

6TH DAM: FAUVER HILL CHOICE ODIE USA2718148

Appraisal: 90 @ 6-10 Gold Star Dam - 1983
5-06 305D 2X 20820M 5.4% 1132F DHIR
7-03 365D 2X 24530M 5.3% 1290F 3.6% 886P DHIA
2425D 139,630M 5.8% 8,046F LIFE



Fauver Hill Tel Odette EX-92

5-07 365D 35,090M* 5.1% 1,781F* 3.4% 1,196P*

Fifth Dam of Lot 31

USA000068019810

SELLING OPEN

TROTACRE JAY MR LUXURY-ET USA00000602751 7GU339

03/08 USDA PTA +1017M -0.12% +24F +210NM\$ 68NM%ile
-0.03% +28P +202CM\$ 97% Rel
AGA 03/08 PTAT +1.1 95% Rel PTI +116

COULEE CREST ENHANCER SNOW-ET USA000003050736

03/08 USDA PTA +964M +0.08% +56F +115NM\$ 68NM%ile
-0.05% +22P +99CM\$ 72% Rel
1 Rec YDev: +1833M +201F +54P
1 App 03/08 PTAT +1.4 69% Rel CPI +130
Appraisal: 88 @ 2-08
2-01 365D 2X 21059M 6.3% 1319F 3.7% 784P DHIA

TROTACRE LORAL TILLER-ET USA00000603341 7GU360

03/08 USDA PTA +611M +0.02% +31F -34NM\$ 4NM%ile
-0.05% +12P -49CM\$ 98% Rel
AGA 03/08 PTAT +2.8 97% Rel PTI +124

KNAPPS ACE OPHELIA USA000003079950

03/08 USDA PTA -247M -0.03% -16F +63NM\$ 51NM%ile
+0.00% -8P +62CM\$ 50% Rel
2 Rec YDev: -1641M -90F -43P
1 App 03/08 PTAT +1.2 44% Rel CPI +29
Appraisal: 88 @ 2-11 (88/87)
2-03 357D 2X 14630M 4.6% 666F 3.4% 499P 100

3RD DAM: KNAPPS MAGICIAN OPRAH USA000003050121

Appraisal: 87 @ 5-06
1-11 365D 2X 24020M* 4.2% 997F 3.4% 811P DHIA
2-11 326D 2X 21060M 4.2% 892F 3.5% 727P 93
3-11 305D 2X 27240M 4.3% 1173F 3.1% 850P DHIA
5-01 329D 2X 29870M 4.5% 1334F 3.1% 916P 94
6-01 365D 2X 33990M 4.5% 1537F 3.1% 1054P DHIA
1877D 147,350M 4.3% 6,398F 3.2% 4,729P LIFE
KNAPPS LORRY ODDIE 80 @ 3-06
2-01 360D 2X 23170M 4.2% 968F 2.9% 677P 95
KNAPPS AWARD OPRY 88 @ 3-10 (88/79)
3-05 365D 2X 27710M 3.5% 966F 3.1% 865P 87

4TH DAM: LAESCHLAND SMOKEY OPHELIA USA3014462

Appraisal: 90 @ 4-05
2-06 365D 2X 18860M 4.4% 832F 3.0% 569P DHIA
4-01 365D 2X 29610M 3.9% 1164F 3.6% 1053P* DHIA
6-02 344D 2X 30450M 4.4% 1347F 3.3% 1005P 93
KNAPPS LORRY OPINION 85 @ 4-11 (85/84)
3-02 349D 2X 25510M 4.1% 1038F 3.2% 825P 94