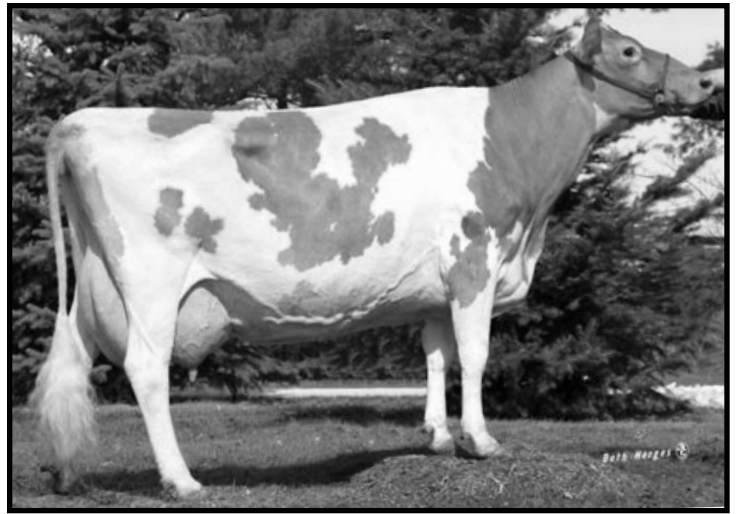




**Misty Meadows Spider Dafodil EX-92**  
Grand Champion Minnesota State Fair 2006  
Dam of Lot 32



**Misty Meadows Perfecto Dixie EX-91**  
10-10 365D 27,450M 3.7% 1,025F 3.4% 924P  
Granddam of Lot 32  
Pictured at 12 yrs. of Age

**LOT 32 EMBRYOS FROM MISTY MEADOWS SPIDER DAFODIL**

Breeder & Owner: JACLYN A PETERSON  
481 CO RD NN  
WILSON WI 54027  
715-698-2299

Selling 5 #1 DT embryos from Dafodil by Challenge.  
Buyer responsible for cost and liability of shipping.

**IDLE GOLD E CHALLENGE-ET USA000000604268 1GU418**  
03/08 USDA PTA +180M +0.17% +36F +367NM\$ 95NM%ile  
+0.08% +20P +399CM\$ 75% Rel  
AGA 03/08 PTAT +1.4 71% Rel PTI +162  
ST SR BD DF RA TW RL FA  
+0.7 +0.0 -0.1 +0.9 L0.6 -0.2 P1.0 S0.3  
FU RH RW UC UD TP TL  
+2.6 +2.4 +1.6 +0.4 S2.1 C0.5 -0.2

**MISTY MEADOWS SPIDER DAFODIL USA000003080284**  
03/08 USDA PTA +586M -0.01% +25F +195NM\$ 87NM%ile  
+0.05% +28P +216CM\$ 46% Rel  
2 Rec YDev: +2413M +94F +112P  
5 App 03/08 PTAT +0.8 54% Rel CPI +126  
Appraisal: 92 @ 4-11 (91/85)  
ST SR BD DF RA TW RL FA FU RH RW UC UD TP TL  
50 38 32 47 15 35 34 30 36 37 35 30 34 29 28  
2-01 365D 3X 24530M 4.5% 1094F 3.5% 850P DHIA  
3-10 365D 3X 35960M\* 4.1% 1489F 3.5% 1250P\* DHIA  
*HM JR. ALL-AMERICAN 5-YEAR-OLD 2007*  
*NOM. ALL-AMERICAN 4-YEAR-OLD 2006*  
*RES. JR. ALL-AMERICAN 4-YEAR-OLD 2006*  
*NOM. JR. ALL-AMERICAN JR. 3-YEAR-OLD 2005*  
*2ND 5-YEAR-OLD NJS-MADISON 2007*  
*NASCO TYPE & PRODUCTION AWARD NGS-MADISON 2007*  
*5TH 5-YEAR-OLD NGS-MADISON 2007*  
*GRAND CHAMPION MN STATE FAIR 2006*  
*5TH JR. 2-YEAR-OLD NJS-MADISON 2004*  
*RES. SR. CHAMPION WISCONSIN STATE SHOW 2007*

**5TH DAM: LAESCHLAND CHOICE DAFFODIL USA2863704**  
Appraisal: 82 @ 3-05  
5-03 365D 2X 19760M 4.6% 905F 3.8% 755P DHIA

**6TH DAM: LAESCHLAND DEACON DAISY USA000002782367**  
Appraisal: 88 @ 3-08  
3-07 305D 2X 15400M 5.2% 797F DHIR

**7TH DAM: FAUVER HILL LANCE DOLORES USA000002659473**  
Appraisal: 80 @ 5-05

**ROZELYN PATMAR EL GATO USA000000602230 1GU382**  
03/08 USDA PTA -606M +0.12% -8F +261NM\$ 90NM%ile  
+0.11% -2P +297CM\$ 79% Rel  
AGA 03/08 PTAT +0.2 80% Rel PTI +37

**PAFARMS FORTRESS CASSANDRA USA000003042855**  
03/08 USDA PTA +1721M -0.09% +59F +329NM\$ 98NM%ile  
-0.05% +47P +316CM\$ 67% Rel  
2 Rec YDev: +5324M +194F +155P  
3 App 03/08 PTAT +1.7 66% Rel CPI +209  
Appraisal: 89 @ 3-07  
2-01 365D 2X 30530M\* 3.9% 1203F 3.4% 1052P\* DHIA

**COULEE CREST LUXURY SPIDER-ET USA604229 1GU415**  
03/08 USDA PTA +906M +0.02% +43F +137NM\$ 50NM%ile  
+0.03% +34P +151CM\$ 82% Rel  
AGA 03/08 PTAT +1.3 76% Rel PTI +142

**MISTY MEADOWS PERFECTO DIXIE USA000003036112**  
03/08 USDA PTA -384M -0.01% -18F +91NM\$ 61NM%ile  
+0.04% -6P +104CM\$ 44% Rel  
4 App 03/08 PTAT -0.5 58% Rel CPI -16  
Appraisal: 91 @ 11-01 (90/93)  
3-01 326D 2X 10860M 4.1% 449F 3.6% 388P DHIA  
4-01 305D 3X 20250M 4.1% 836F 3.5% 706P DHIA  
5-02 305D 3X 16940M 4.5% 757F 3.5% 589P DHIA  
6-05 319D 3X 13800M 4.4% 610F 3.6% 501P 88  
7-05 305D 3X 13050M 4.2% 544F 3.7% 486P DHIA  
8-08 327D 3X 15410M 4.0% 617F 3.6% 561P 86  
9-09 338D 3X 18490M 4.2% 785F 3.6% 661P 90  
10-10 365D 3X 27450M\* 3.7% 1025F 3.4% 924P\* DHIA  
2832D 144,260M 4.2% 6,034F 3.6% 5,142P LIFE

MISTY MEADOWS AWARD DUCHESS 77 @ 2-06 (76/80)  
2-04 305D 3X 14650M 4.8% 705F 3.0% 437P 89

**3RD DAM: LAESCHLAND MERCURY DOLLY USA3008207**  
Appraisal: 85 @ 4-00  
2-11 347D 2X 15170M 4.6% 692F 3.8% 583P DHIA

**4TH DAM: LAESCHLAND FAYETTE DILLY USA000002937043**  
Appraisal: 83 @ 8-06  
5-01 365D 2X 19310M 4.6% 882F 3.5% 676P DHIA  
2866D 117,100M 4.6% 5,366F 3.8% 4,413P LIFE