

# Guernsey Gold Production Contest

The Guernsey Gold Heifer Sale started in 1986 as a small sale of select open heifers for junior members. In 2007, we saw 10 calves sell through 4 different sales that were entered in the Guernsey Gold calf project. These 10 calves sold for an average of \$3,190 to youth in 7 states. The top production winner of this group will be awarded over \$1,900 at the 2010 National Convention.

In 2008, at least four sales are participating in the Guernsey Gold program. The following sales will put monies into the Guernsey Gold pot:

1. Pennsylvania Blue Halter Sale
2. Upper Mid-West Spring Sale
3. International Guernsey Classic
4. National Convention Sale

We encourage all juniors to participate in this program by bidding on the Guernsey Gold consignments. The production winners from the calves purchased this year will be recognized at the 2011 National Guernsey Convention.

The American Guernsey Association is very appreciative of the breeders who have nominated top-pedigreed heifers for this program. We also extend our thanks to the sale managements who have agreed to donate the monies into the Guernsey Gold pot.

## ***RULES***

1. Fifteen percent of the sale gross will be set aside for the production contest.
2. Purchaser must be between six and 19 years of age as of January 1 of the year he or she buys the calf.
3. The heifer must calve before reaching 30 months of age to be eligible to compete in the production contest.
4. The production contest ranking will be based on the animal's 2-year-old mature equivalent pounds of protein. These records must be DHIR or official DHI.
5. All heifers must be tested in a DHIR or DHI herd owned by the purchaser or the purchaser's parents or legal guardian. In the event that this is not possible, a written request may be made to the executive secretary for permission to test the animal in another herd in an adjoining county or area.
6. A junior member may not purchase an animal consigned by his or her immediate family.
7. A junior member may purchase only one Guernsey Gold Heifer Sale consignment per year.
8. Monies in the production contest fund will be divided into four prizes as follows: first - 40 percent; second - 30 percent; third - 20 percent; and fourth - 10 percent.
9. Heifers sold in 2008 will compete in the 2011 production contest. (Sell in 2008; calve in 2009 or early 2010; finish record in 2010 or early 2011.)
10. Loss, death or transfer of ownership of any purchased animal before the record is completed eliminates that entry and owner from the production contest.



**Glenville Magician Flute EX-93**

4-07 365D 23,540M 4.6% 1,077F 3.4% 806P

Granddam of Lot GG67

**LOT GG67 SNIDERS CHRISTIAN FELTY**

**USA000068017111**

Born: 04-17-2007 Tattoo LE S971 RE S971

Breeder & Owner: KENDY BETH GABLE

2563 BRUMBAUGH RD

NEW ENTERPRISE PA 16664

814-766-3272

SELLING OPEN

PA: +800M +0.02% +38F -0.01% +25P +211CM\$ +211NM\$

PTAT +1.4 PTI +133

ST SR BD DF RA TW RL FA

+1.3 +0.9 +0.7 +1.1 L0.2 +1.1 0.0 S0.3

FU RH RW UC UD TP TL

+1.4 +1.3 +1.4 +0.6 S1.0 C0.6 -0.9

**IDLE GOLD M CHRISTIAN-TW USA000068002857 7GU418**

PA: +1540M -0.08% +54F -0.07% +39P +201CM\$ +220NM\$

PTAT +1.7 PTI +179

ST SR BD DF RA TW RL FA

+3.4 +1.4 +1.8 +2.9 L1.8 +1.7 P0.2 S0.5

FU RH RW UC UD TP TL

+0.9 +2.1 +2.6 +1.9 S0.1 0.0 +0.3

**R WAY GLACIER FERRARI USA000003080293**

03/08 USDA PTA +60M +0.11% +22F +202NM\$ 88NM%ile

+0.05% +10P +220CM\$ 55% Rel

3 Rec YDev: -202M +38F +17P

3 App 03/08 PTAT +1.0 54% Rel CPI +85

Appraisal: 91 @ 4-09 (91/87)

ST SR BD DF RA TW RL FA FU RH RW UC UD TP TL

28 27 40 42 22 30 28 19 47 41 31 26 27 32 23

2-02 310D 2X 13890M 5.2% 722F 3.6% 501P 93

3-02 350D 2X 19310M 4.6% 880F 3.5% 674P 94

4-03 336D 2X 19680M 4.4% 874F 3.6% 706P 95

**MARFRED MAXIE-ET USA000000603635 54GU440**

03/08 USDA PTA +982M -0.07% +32F +110NM\$ 36NM%ile

-0.06% +22P +92CM\$ 85% Rel

AGA 03/08 PTAT +1.0 83% Rel PTI +91

**IDLE GOLD ROYAL CONTESSA-ET USA000003069270**

03/08 USDA PTA +2097M -0.09% +76F +329NM\$ 98NM%ile

-0.07% +56P +310CM\$ 59% Rel

4 Rec YDev: +5604M +199F +149P

3 App 03/08 PTAT +2.3 57% Rel CPI +265

Appraisal: 88 @ 5-10 (86/88) Gold Star Dam - 2006

5-02 305D 2X 35320M\* 4.3% 1536F 2.9% 1019P 93

**ROZELYN PATMAR JAY GLACIER-ET USA602961 7GU343**

03/08 USDA PTA -31M +0.22% +35F +267NM\$ 90NM%ile

+0.10% +15P +301CM\$ 95% Rel

AGA 03/08 PTAT +1.0 92% Rel PTI +119

**GLENVILLE MAGICMAN FLUTE USA000003068282**

03/08 USDA PTA +345M -0.01% +14F +85NM\$ 59NM%ile

-0.01% +10P +84CM\$ 55% Rel

4 Rec YDev: +1426M +51F +41P

4 App 03/08 PTAT +1.1 55% Rel CPI +68

Appraisal: 93 @ 5-07 (91/92)

2-03 308D 2X 18360M 4.2% 773F 3.1% 567P 92

3-03 305D 2X 19990M 4.1% 824F 3.3% 653P 94

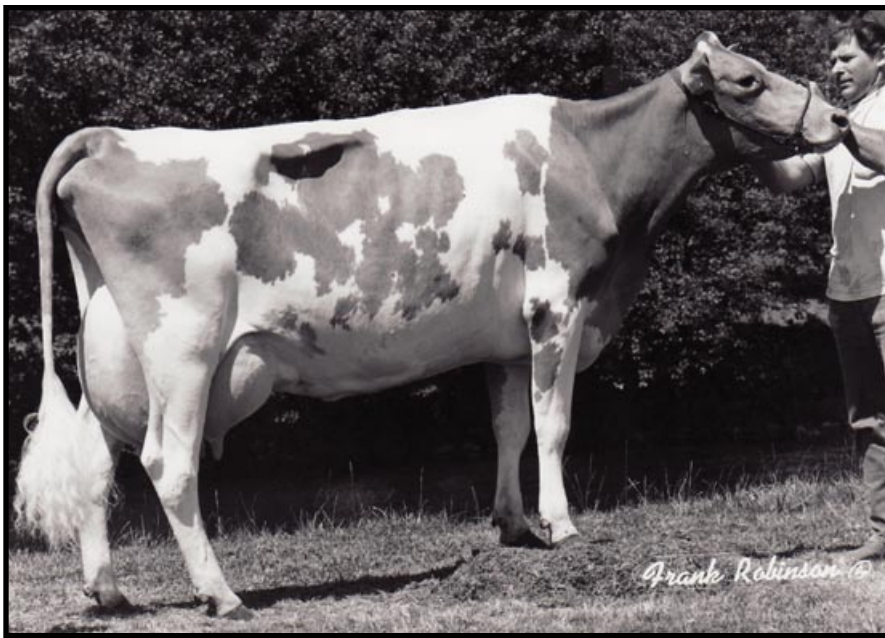
4-07 365D 2X 23540M 4.6% 1077F 3.4% 806P DHIA

5-11 365D 2X 24660M 4.3% 1066F 3.4% 838P DHIA

3RD FALL CALF NGS-HARRISBURG 2001

SNIDERS FAYETTE FRENCHIE 84 @ 3-10 (82/75)

2-05 347D 2X 18050M 4.2% 750F 3.2% 570P 95



**Wilsonview Fayette Raquel  
EX-90**

6-08 365D 26,350M 3.8% 994F 3.6% 936P  
4th Dam of Lot GG68

**LOY GG68 WILSONVIEW HAZELNUT RESCUE USA000063628299**

Born: 10-18-2007 Tag # 2006  
Breeder & Owner: WILSONVIEW DAIRY INC  
2470 OLSON RD  
TILLAMOOK OR 97141  
503-842-2775

SELLING OPEN

PA: +706M -0.01% +30F -0.03% +19P +280CM\$ +285NM\$  
PTAT +0.7 PTI +109  
ST SR BD DF RA TW RL FA  
-1.2 -0.4 -0.4 +0.1 L0.5 -0.9 P0.3 S0.4  
FU RH RW UC UD TP TL  
+0.5 +0.6 +0.1 +0.2 S0.2 C0.4 -0.2

**BAY MEADOW LEWIS HAZELNUT USA000068008565 7GU421**  
PA: +733M +0.01% +35F -0.04% +18P +272CM\$ +281NM\$  
PTAT +1.0 PTI +123  
ST SR BD DF RA TW RL FA  
-0.1 +0.2 +0.2 +0.7 L1.1 +0.2 P0.3 S0.5  
FU RH RW UC UD TP TL  
+0.6 +1.5 +0.8 +0.1 S0.2 C0.4 +0.1

**WILSONVIEW JULES RAGE USA000003081380**  
03/08 USDA PTA +679M -0.03% +25F +289NM\$ 96NM%ile  
-0.01% +20P +287CM\$ 58% Rel  
4 Rec YDev: +1449M +38F +45P  
2 App 03/08 PTAT +0.3 54% Rel CPI +92  
Appraisal: 82 @ 3-11 (84/83)  
ST SR BD DF RA TW RL FA FU RH RW UC UD TP TL  
31 32 27 16 25 23 31 27 31 29 29 27 22 29 23  
2-00 365D 2X 17920M 4.3% 770F 3.3% 589P 99  
3-03 330D 2X 19420M 4.2% 811F 3.2% 628P 100  
4-04 305D 2X 20170M 3.8% 771F 3.2% 641P 98

WILSONVIEW SPADE RILEY-TW 82 @ 2-08 (82/79)  
2-00 365D 2X 18050M 3.9% 695F 3.0% 550P DHIA

**3RD DAM: WILSONVIEW MAGIC RAGE-ET USA000003015066**  
Appraisal: 90 @ 5-02  
2-02 365D 2X 22810M 4.2% 953F 3.6% 819P DHIA  
3-04 365D 2X 23220M 4.5% 1055F 3.7% 859P DHIA

**4TH DAM: WILSONVIEW FAYETTE RAQUEL USA2949759**  
Appraisal: 90 @ 3-09 Gold Star Dam - 1994  
3-00 354D 2X 20900M 4.0% 836F 3.8% 798P DHIA  
5-05 365D 2X 25180M 3.8% 961F 3.7% 931P DHIA  
6-08 365D 2X 26350M 3.8% 994F 3.6% 936P DHIA  
2114D 120,370M 3.9% 4,729F 3.7% 4,476P LIFE

**5TH DAM: WILSONVIEW KINGS RICKI USA000002879779**  
Appraisal: 86 @ 4-02  
3-04 365D 2X 21620M 4.4% 958F 3.6% 784P DHIA

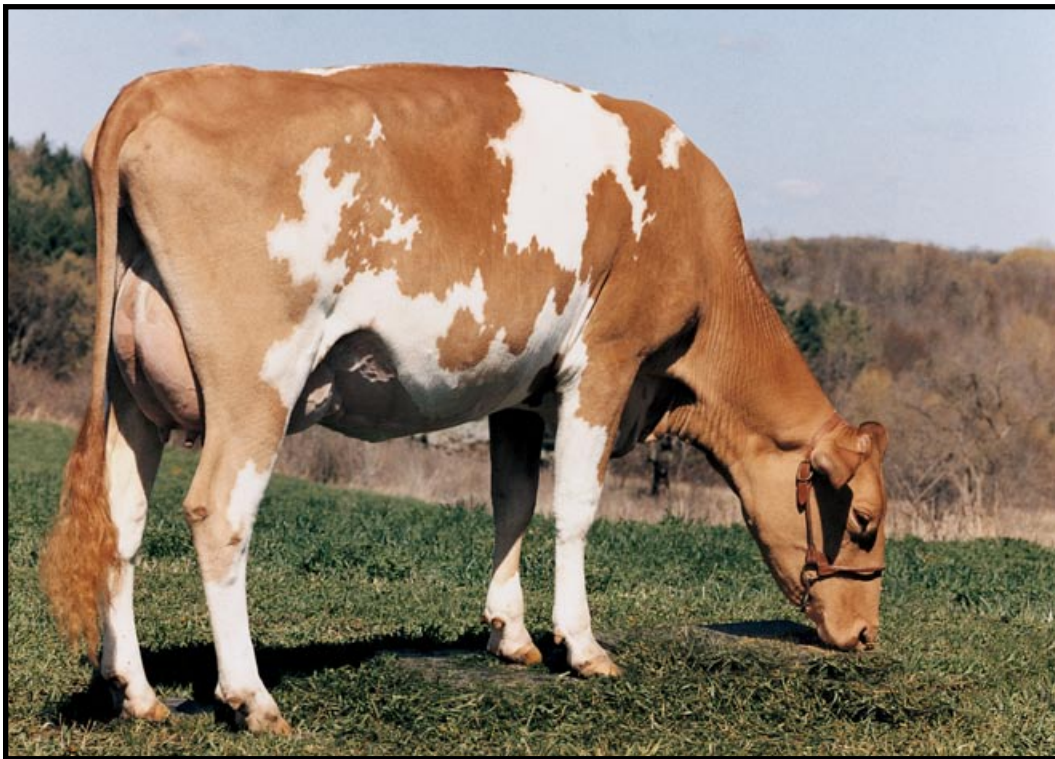
**TROTACRE ENHANCER LEWIS-ET USA000000603342 7GU366**  
03/08 USDA PTA +591M +0.01% +28F +218NM\$ 72NM%ile  
-0.04% +13P +207CM\$ 96% Rel  
AGA 03/08 PTAT +0.8 95% Rel PTI +95

**BAY MEADOW LORRY HAZELLITA USA000003056687**  
03/08 USDA PTA +875M +0.01% +41F +344NM\$ 98NM%ile  
-0.03% +23P +336CM\$ 60% Rel  
4 Rec YDev: +2271M +93F +64P  
3 App 03/08 PTAT +1.1 57% Rel CPI +148  
Appraisal: 90 @ 5-11 (90/88) Gold Star Dam - 2005  
2-06 365D 2X 24440M 4.2% 1021F 3.4% 834P DHIA

**ROZELYN ENHANCER JULES-ET USA000000603287 14GU279**  
03/08 USDA PTA +782M +0.03% +40F +187NM\$ 68NM%ile  
-0.06% +15P +168CM\$ 94% Rel  
AGA 03/08 PTAT -0.6 93% Rel PTI +56

**WILSONVIEW GOLIATH RALLY USA000003046975**  
03/08 USDA PTA +525M +0.08% +37F +389NM\$ 99NM%ile  
+0.05% +25P +408CM\$ 64% Rel  
5 Rec YDev: +1338M +96F +61P  
3 App 03/08 PTAT +0.2 62% Rel CPI +127  
Appraisal: 90 @ 6-03 Gold Star Dam - 2002  
2-04 298D 2X 18550M 4.7% 869F 3.5% 643P DHIR  
3-03 305D 2X 20140M 4.8% 971F 3.6% 733P DHIA  
4-09 365D 2X 22070M 5.1% 1120F 3.4% 756P DHIA  
5-11 365D 2X 20210M 4.7% 943F 3.4% 687P DHIA  
7-03 365D 2X 23920M 4.8% 1154F 3.3% 798P 99  
2076D 121,810M 4.9% 5,977F 3.5% 4,281P LIFE

WILSONVIEW LORRY RACHAEL 81 @ 5-11 (77/82)  
Gold Star Dam - 2006  
4-01 365D 2X 23400M 5.1% 1183F 3.5% 828P 100  
WILSONVIEW LUXURY REBEL 88 @ 4-05 (87/88)  
Gold Star Dam - 2006  
3-03 328D 2X 22790M 4.1% 927F 3.4% 772P 98



**Wesgray Legacy Brown Sugar EX-92**

4-04 305D 22,030M 4.2% 930F 3.7% 814P

3rd Dam of LotGG69

**LOT GG69 WESGRAY SKIPPER BOQUET**

**USA000068018931**

Born: 08-25-2007 Tattoo LE W903 RE W903

Breeder & Owner: DARREL R CLARK

WESGRAY GUERNSEYS

S8380 DRAKE RD

VIOLA WI 54664

608-538-3161

SELLING OPEN

PA: +720M +0.02% +34F -0.03% +19P +176CM\$ +184NM\$

PTAT +1.4 PTI +112

ST SR BD DF RA TW RL FA

+1.0 +0.2 +0.4 +1.4 L1.2 +0.3 P0.9 L0.4

FU RH RW UC UD TP TL

+1.0 +2.2 +1.4 +0.7 S0.5 C1.7 -1.4

**COULEE CREST LUXURY SKIPPER-ET USA604230 200GU108**

03/08 USDA PTA +786M -0.05% +25F +120NM\$ 40NM%ile

-0.05% +16P +103CM\$ 71% Rel

AGA 03/08 PTAT +1.6 68% Rel PTI +98

ST SR BD DF RA TW RL FA

+1.5 -0.4 -0.1 +1.9 L1.5 +0.0 P1.4 L0.4

FU RH RW UC UD TP TL

+1.2 +3.1 +1.8 +0.6 S1.1 C2.6 -2.6

**WESGRAY SPADE BONUS USA000068002310**

03/08 USDA PTA +654M +0.08% +43F +247NM\$ 93NM%ile

+0.00% +21P +249CM\$ 47% Rel

2 Rec YDev: +1181M +101F +50P

1 App 03/08 PTAT +1.2 42% Rel CPI +123

Appraisal: 84 @ 4-00 (86/75)

ST SR BD DF RA TW RL FA FU RH RW UC UD TP TL

26 36 33 40 32 27 37 18 27 36 36 23 22 32 32

2-05 314D 3X 20460M 4.9% 996F 3.5% 716P 91

#207 ON THE APRIL '08 CPI LIST

**3RD DAM: WESGRAY LEGACY BROWNSUGAR USA3063093**

Appraisal: 92 @ 4-09 (93/92)

4-04 305D 2X 22030M 4.2% 930F 3.7% 814P 92

**4TH DAM: WESGRAY BLITZ BUTTERMINT USA000003034620**

Appraisal: 85 @ 4-09

**TROTACRE JAY MR LUXURY-ET USA000000602751 7GU339**

03/08 USDA PTA +1017M -0.12% +24F +210NM\$ 68NM%ile

-0.03% +28P +202CM\$ 97% Rel

AGA 03/08 PTAT +1.1 95% Rel PTI +116

**COULEE CREST ENHANCER SNOW-ET USA000003050736**

03/08 USDA PTA +964M +0.08% +56F +115NM\$ 68NM%ile

-0.05% +22P +99CM\$ 72% Rel

1 Rec YDev: +1833M +201F +54P

1 App 03/08 PTAT +1.4 69% Rel CPI +130

Appraisal: 88 @ 2-08

2-01 365D 2X 21059M 6.3% 1319F 3.7% 784P DHIA

**JENS GOLD POKER Z SPADE USA000000604605 7GU396**

03/08 USDA PTA +605M +0.12% +47F +132NM\$ 50NM%ile

-0.02% +16P +127CM\$ 82% Rel

AGA 03/08 PTAT +0.8 76% Rel PTI +92

**WESGRAY JOCK BONANZA USA000003076971**

03/08 USDA PTA +767M -0.02% +31F +308NM\$ 97NM%ile

-0.02% +22P +305CM\$ 55% Rel

4 Rec YDev: +2215M +92F +69P

3 App 03/08 PTAT +1.4 52% Rel CPI +135

Appraisal: 88 @ 4-09 (88/83)

2-02 302D 2X 16010M 4.5% 714F 3.2% 505P 93

3-02 355D 2X 24310M 4.5% 1106F 3.3% 799P 94

4-02 354D 3X 27750M 4.3% 1189F 3.3% 916P 94

5-03 354D 3X 28150M 4.7% 1337F 3.3% 919P 89

#126 ON THE APRIL '08 CPI LIST

# LOT GG70 PINE GROVE CHALLENGE ROBIN USA000068017793

Born: 05-31-2007 Tattoo LE S453  
Breeder & Owner: REUBEN M MILLER  
1923 CR 144 RT 2  
SUGARCREEK OH 44681  
330-852-2829

SELLING OPEN

ENTERED IN 2009 OHIO 2-YEAR-OLD FUTURITY

PA: +539M +0.05% +32F +0.02% +22P +246CM\$ +235NM\$  
PTAT +1.3 PTI +131  
ST SR BD DF RA TW RL FA  
+2.2 +0.6 +0.7 +1.8 L0.1 +0.3 P0.2 S0.3  
FU RH RW UC UD TP TL  
+1.3 +1.9 +1.4 -0.7 S0.8 C0.6 -0.6

**IDLE GOLD E CHALLENGE-ET USA000000604268 1GU418**  
03/08 USDA PTA +180M +0.17% +36F +367NM\$ 95NM%ile  
+0.08% +20P +399CM\$ 75% Rel  
AGA 03/08 PTAT +1.4 71% Rel PTI +162  
ST SR BD DF RA TW RL FA  
+0.7 +0.0 -0.1 +0.9 L0.6 -0.2 P1.0 S0.3  
FU RH RW UC UD TP TL  
+2.6 +2.4 +1.6 +0.4 S2.1 C0.5 -0.2

**PINE GROVE SPIDER RHONDA USA000003079550**  
03/08 USDA PTA +898M -0.07% +28F +102NM\$ 64NM%ile  
-0.04% +23P +92CM\$ 51% Rel  
3 Rec YDev: +2663M +74F +63P  
3 App 03/08 PTAT +1.1 51% Rel CPI +96  
Appraisal: 82 @ 5-03 (83/67)  
ST SR BD DF RA TW RL FA FU RH RW UC UD TP TL  
43 39 48 40 11 17 39 28 27 32 23 10 7 21 27  
2-01 365D 2X 19460M 4.2% 819F 3.1% 597P 95  
3-04 365D 2X 25750M 3.8% 967F 3.0% 770P 93  
4-06 295D 2X 18450M 3.7% 677F 3.0% 548P 95

**3RD DAM: PINE GROVE FORESTAR ROSIE USA000003057865**  
Appraisal: 80 @ 3-11 (80/84)  
5-10 354D 2X 17540M 4.8% 848F 3.4% 596P 94  
**4TH DAM: PINE GROVE MAGIC ROBIN USA000003045991**  
Appraisal: 86 @ 4-05  
7-00 305D 2X 17190M 5.0% 851F 3.0% 519P 69

**ROZELYN PATMAR EL GATO USA000000602230 1GU382**  
03/08 USDA PTA -606M +0.12% -8F +261NM\$ 90NM%ile  
+0.11% -2P +297CM\$ 79% Rel  
AGA 03/08 PTAT +0.2 80% Rel PTI +37

**PAFARMS FORTRESS CASSANDRA USA000003042855**  
03/08 USDA PTA +1721M -0.09% +59F +329NM\$ 98NM%ile  
-0.05% +47P +316CM\$ 67% Rel  
2 Rec YDev: +5324M +194F +155P  
3 App 03/08 PTAT +1.7 66% Rel CPI +209  
Appraisal: 89 @ 3-07  
2-01 365D 2X 30530M\* 3.9% 1203F 3.4% 1052P\* DHIA

**COULEE CREST LUXURY SPIDER-ET USA604229 1GU415**  
03/08 USDA PTA +906M +0.02% +43F +137NM\$ 50NM%ile  
+0.03% +34P +151CM\$ 82% Rel  
AGA 03/08 PTAT +1.3 76% Rel PTI +142

**PINE GROVE VALOR RIDDLE USA000003070154**  
03/08 USDA PTA +273M -0.07% +0F +78NM\$ 57NM%ile  
-0.05% +1P +62CM\$ 59% Rel  
5 Rec YDev: +688M +3F +4P  
3 App 03/08 PTAT +0.5 57% Rel CPI +17  
Appraisal: 83 @ 4-02 (80/84)  
1-11 311D 2X 14730M 4.2% 620F 3.1% 459P 95  
2-11 327D 2X 18930M 4.5% 855F 3.2% 598P 94  
4-00 288D 2X 18500M 4.4% 817F 3.2% 583P 93  
5-00 298D 2X 20350M 3.7% 745F 3.0% 614P 94  
6-00 318D 2X 19330M 4.1% 794F 3.1% 591P 95  
12/07 ALTANIC DTR SOLD FOR \$4,100 IN '08 BLUE HALTER SALE

PINE GROVE HOLIDAY R BRIDGET 87 @ 3-02 (88/83)  
2-00 338D 2X 12320M 4.8% 586F 3.3% 407P 95

# LOT GG71 ROLLANDIA CHALLENGE PRAISE USA000068017990

Born: 06-02-2007 Tattoo LE H448 RE H448  
Breeder: HARRY & MARGARET SWYERS & FAMILY  
AMERY WI  
Owner: HARRY & MARGARET SWYERS & DEB LAKEY  
995 85TH AVE  
AMERY WI 54001  
715-268-2405

SELLING OPEN

PA: +173M +0.12% +28F +0.08% +19P +322CM\$ +292NM\$  
PTAT +0.7 PTI +120  
ST SR BD DF RA TW RL FA  
-0.7 -1.0 -0.8 +0.8 H0.1 -0.7 P1.0 0.0  
FU RH RW UC UD TP TL  
+1.6 +1.5 +1.3 +0.2 S1.1 C1.4 -1.0

**IDLE GOLD E CHALLENGE-ET USA000000604268 1GU418**  
03/08 USDA PTA +180M +0.17% +36F +367NM\$ 95NM%ile  
+0.08% +20P +399CM\$ 75% Rel  
AGA 03/08 PTAT +1.4 71% Rel PTI +162  
ST SR BD DF RA TW RL FA  
+0.7 +0.0 -0.1 +0.9 L0.6 -0.2 P1.0 S0.3  
FU RH RW UC UD TP TL  
+2.6 +2.4 +1.6 +0.4 S2.1 C0.5 -0.2

**ROLLANDIA MR LUCK PSALM USA000003076811**  
03/08 USDA PTA +165M +0.07% +19F +216NM\$ 90NM%ile  
+0.08% +18P +244CM\$ 57% Rel  
4 Rec YDev: +496M +59F +52P  
4 App 03/08 PTAT +0.0 56% Rel CPI +73  
Appraisal: 88 @ 5-03 (90/83)  
ST SR BD DF RA TW RL FA FU RH RW UC UD TP TL  
35 26 28 35 15 34 33 28 25 42 44 32 26 28 26  
1-11 365D 2X 12640M 5.9% 743F 4.1% 515P DHIA  
3-01 295D 2X 14550M 5.5% 806F 3.8% 558P 92  
4-00 355D 2X 17000M 5.6% 945F 3.7% 634P 90  
5-02 305D 2X 12620M 5.3% 675F 3.7% 462P 84

**ROZELYN PATMAR EL GATO USA000000602230 1GU382**  
03/08 USDA PTA -606M +0.12% -8F +261NM\$ 90NM%ile  
+0.11% -2P +297CM\$ 79% Rel  
AGA 03/08 PTAT +0.2 80% Rel PTI +37

**PAFARMS FORTRESS CASSANDRA USA000003042855**  
03/08 USDA PTA +1721M -0.09% +59F +329NM\$ 98NM%ile  
-0.05% +47P +316CM\$ 67% Rel  
3 App 03/08 PTAT +1.7 66% Rel CPI +209  
Appraisal: 89 @ 3-07  
2-01 365D 2X 30530M\* 3.9% 1203F 3.4% 1052P\* DHIA

**TROTACRE JAY MR LUCK-ET USA000000602750 29GU944**  
03/08 USDA PTA +1109M -0.16% +20F +136NM\$ 50NM%ile  
-0.02% +34P +135CM\$ 96% Rel  
AGA 03/08 PTAT -1.0 93% Rel PTI +72

**ROLLANDIA HARPOON PASSOVER USA000003056231**  
03/08 USDA PTA -846M +0.21% -4F +51NM\$ 47NM%ile  
+0.12% -8P +90CM\$ 64% Rel  
5 Rec YDev: -1916M -1F -19P  
4 App 03/08 PTAT -0.4 61% Rel CPI -23  
Appraisal: 85 @ 8-05 (85/82)  
2-11 289D 2X 9200M 6.8% 622F 3.9% 360P DHIA  
3-11 334D 2X 10620M 6.1% 647F 3.9% 419P 94  
5-00 284D 2X 10880M 5.9% 641F 4.2% 454P 92  
5-11 293D 2X 12300M 6.1% 745F 4.0% 493P 83  
7-00 276D 2X 9690M 5.6% 542F 4.1% 397P 90  
7-11 271D 2X 12570M 6.4% 806F 3.9% 484P 85  
8-10 282D 2X 14350M 5.7% 824F 3.9% 558P 83