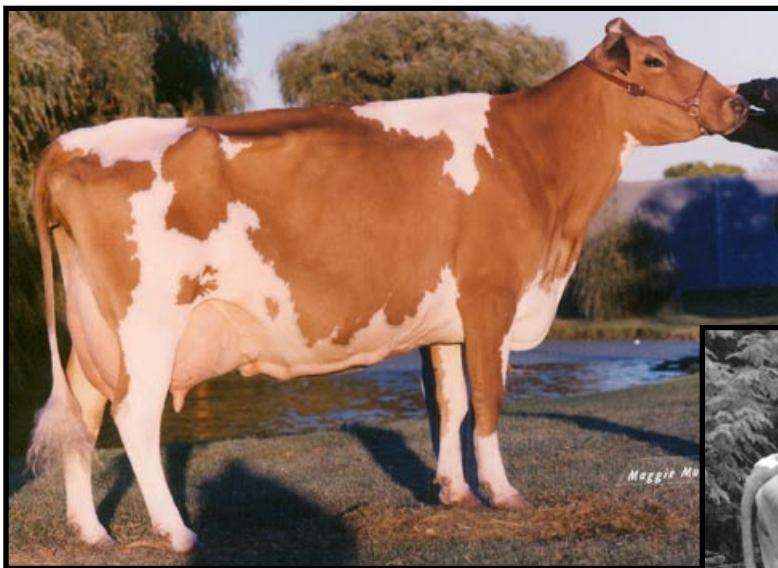




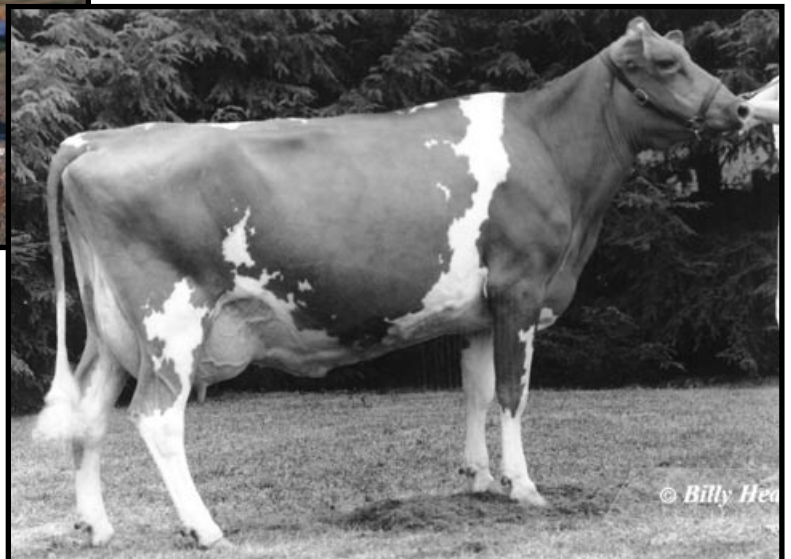
Dix Lee Tiller Joke EX-90

2-00 365D 24,167M 4.8% 1,158F 3.3% 794P
 All-American Jr. 2-Year-Old 2006
 Dam of Lot 1



Dix Lee Perfecto Fawna EX-93

6-04 305D 21,590M 4.1% 880F 3.6% 773P
 Res. Jr. All-American Five Times
 Res. All-American Aged Cow 1999
 Maternal Sister to 4th Dam of Lot 1



Dix Lee Fayette Jingo EX-90

4-02 305D 21,510M 4.6% 992F 3.6% 768P
 Grand Champion MD State Fair Jr. Show 1994
 5th Dam of Lot 1

LOT 1 SPRINGHILL J LONE STAR-ET USA000068030411

Born: 02-01-2009 Tag # 110
Breeder & Owner: SPRING HILL FARM INC
CHRIS LANG
7109 SR 514
BIG PRAIRIE OH 44611
330-378-4515

BULL
CONTACT GUERNSEY MARKETING SERVICE AT 614-864-2409 TO
RESERVE YOUR SHARE IN THE LONE STAR SYNDICATE.
SYNDICATE MEMBERS WILL RECEIVE 20 UNITS OF SAMPLING
SEMEN AND A SHARE OF ALL ROYALTIES RECEIVED AFTER
LONE STAR IS PROVEN.

PA: +932M +0.03% +47F +0.01% +31P +169CM\$ +165NM\$
+1.8PTAT +0.9UDC +0.9FLC -1.0DPR -1.2PL +161PTI
ST SR BD DF RA TW RV RL FA
+5.5 +1.7 +1.9 +2.9 L0.5 +2.4 H0.5 0.0 S0.5
FU RH RW UC UD TP TL
+1.2 +2.6 +2.1 +0.0 S0.8 C1.5 -0.5

COULEE CREST LUXURY SPIDER-ET USA604229 1GU415
04/09 USDA PTA +877M +0.01% +41F +0.03% +33P
-1.2DPR -1.5PL +126NM\$ 41NM%ile +139CM\$ 86% Rel
AGA 04/09 PTAT +1.4 +0.7UDC +0.1FLC 80%Rel PTI +136
ST SR BD DF RA TW RV RL FA
+6.0 +2.0 +2.5 +3.2 L1.1 +2.3 H0.2 S0.4 0.0
FU RH RW UC UD TP TL
+0.7 +2.9 +2.3 -0.4 S0.2 C1.5 -1.6

DIX LEE TILLER JOKE USA000068001932
04/09 USDA PTA +986M +0.05% +53F -0.02% +28P
-0.7DPR -0.8PL +203NM\$ 84NM%ile +198CM\$ 48% Rel
1 Rec YDev: +5052M +266F +153P
1 App 04/09 PTAT +2.1 +1.1UDC +1.7FLC 48%Rel CPI +182
Appraisal: 90 @ 2-07 (90/90)
ST SR BD DF RA TW RL FA FU RH RW UC UD TP TL
40 25 19 41 20 38 23 35 38 47 40 25 38 35 19
2-00 365D 2X 24167M 4.8% 1158F 3.3% 794P 92
*FORMER TOP 10 CPI COW & SET TO CALVE AGAIN THIS FALL
ALL-AMERICAN JR 2-YEAR-OLD 2006
JR ALL-AMERICAN JR 2-YEAR-OLD 2006
1ST JR 2-YEAR-OLD NGS-LOUISVILLE 2006
1ST JR 2-YEAR-OLD NGS-HARRISBURG 2006
RES INT. CHAMPION NJS-HARRISBURG 2006*

TROTACRE JAY MR LUXURY-ET USA000000602751 7GU339
04/09 USDA PTA +955M -0.12% +22F -0.03% +25P
+0.9DPR +1.4PL +188NM\$ 70NM%ile +178CM\$ 97% Rel
AGA 04/09 PTAT +1.2 +0.5UDC +0.7FLC 96%Rel PTI +105

COULEE CREST ENHANCER SNOW-ET USA000003050736
04/09 USDA PTA +897M +0.08% +53F -0.05% +20P
-2.2DPR -2.2PL +101NM\$ 60NM%ile +85CM\$ 73% Rel
1 App 04/09 PTAT +1.4 +0.7UDC +0.0FLC 70%Rel CPI +121
Appraisal: 88 @ 2-08
2-01 365D 2X 21059M 6.3% 1319F 3.7% 784P DHIA

TROTACRE LORAL TILLER-ET USA000000603341 7GU360
04/09 USDA PTA +544M +0.02% +28F -0.05% +9P
-3.5DPR -3.9PL -106NM\$ 0NM%ile -121CM\$ 98% Rel
AGA 04/09 PTAT +2.7 +1.0UDC +1.9FLC 98%Rel PTI +103

DIX LEE JIFFY JIPSY USA000003066162
04/09 USDA PTA +618M +0.06% +37F +0.02% +23P
-0.5DPR +0.7PL +181NM\$ 80NM%ile +189CM\$ 56% Rel
4 Rec YDev: +1554M +95F +62P
4 App 04/09 PTAT +0.7 +0.6UDC +0.5FLC 57%Rel CPI +115
Appraisal: 90 @ 5-01 (88/90)
2-02 365D 2X 20650M 4.4% 900F 3.3% 682P DHIA
3-08 307D 2X 21870M 4.4% 965F 3.3% 731P 92
4-08 365D 2X 25080M 4.6% 1142F 3.4% 852P DHIA
5-11 268D 2X 17060M 4.1% 704F 3.3% 568P 90

DIX LEE GL JENNA 83 @ 5-00 (80/86)
4-07 365D 2X 24720M 4.9% 1208F 3.5% 853P DHIA
DIX LEE SILVERADO JUSTINE 86 @ 3-07 (87/80)

THIRD DAM: DIX LEE SMOKEY BEAR JIGGER USA000003036554
Appraisal: 84 @ 4-06
6-00 350D 2X 18990M 3.8% 728F 3.3% 618P DHIA

FOURTH DAM: DIX LEE BRETTS BIONIC JINGLE 000003004382
Appraisal: 86 @ 5-06

FIFTH DAM: DIX LEE FAYETTE JINGO 000002984299
Appraisal: 90 @ 3-11
4-02 305D 2X 21510M 4.6% 992F 3.6% 768P DHIR
HER DTR: DIX LEE PERFECTO FAWNA-TW 93 @ 6-07
6-04 305D 2X 21590M 4.1% 880F 3.6% 773P DHIA
GRAND CHAMPION NJS-HARRISBURG 1998



Joke, the \$23,600 Top Seller in the
2007 National Convention Sale!