

LOT 2 MOZIERS LUX ANNE OF LAVON FARMS USA000003083235

Born: 09-06-2003 Tattoo LE M329 RE M329
Breeder PANTHER SPRING SYNDICATE
LOUISBURG KS
Owner: LAVON FARMS & GARY ESTES
3721 N JUPITER RD
PLANO TX 75074

BRED: 11-10-08 DUE: 08-23-09
LAVON FARMS SHAPR ROLL-ET 68023280 (SHARP X 2 EX-91 DAMS)

LAVON FARMS GEWELS ANN 86 @ 3-00 (86/86)

DHI Herd # 74040109 Cow Control 00329
04/09 USDA PTA +535M +0.10% +41F +0.01% +19P
-1.4DPR -1.2PL +130NM\$ 68NM%ile +136CM\$ 50% Rel
2 Rec YDev: +2834M +174F +100P
2 App 04/09 PTAT +1.9 +1.1UDC +2.0FLC 50%Rel CPI +151
Appraisal: 92 @ 4-04 (94/89)
ST SR BD DF RA TW RV RL FA FU RH RW UC UD TP TL
50 18 41 50 15 39 24 21 30 34 50 50 39 28 46 29
2-06 305D 2X 17810M 4.5% 795F 3.3% 579P 95
3-09 305D 2X 19530M 4.7% 909F 3.3% 648P 95

#90 ON THE APRIL '09 CPI LIST
ALL-AMERICAN SR. 2-YEAR-OLD 2006
ALL-AMERICAN SR. 3-YEAR-OLD 2007
GRAND CHAMPION NGS-LOUISVILLE 2007
RES. GRAND CHAMPION NGS-LOUISVILLE 2006
RES. GRAND CHAMPION NGS-MADISON 2007
INT. CHAMPION NGS-LOUISVILLE 2006 & 2007
INT. CHAMPION NGS-MADISON 2007

TROTACRE JAY MR LUXURY-ET USA000000602751 7GU339

04/09 USDA PTA +955M -0.12% +22F -0.03% +25P
+0.9DPR +1.4PL +188NM\$ 70NM%ile +178CM\$ 97% Rel
AGA 04/09 PTAT +1.2 +0.5UDC +0.7FLC 96%Rel PTI +105

PINE RIDGE SUPER LUX-ET USA000000604313 7GU385

04/09 USDA PTA +672M +0.03% +35F +0.00% +21P
+0.3DPR -0.6PL +133NM\$ 50NM%ile +134CM\$ 81% Rel
AGA 04/09 PTAT +0.6 +0.1UDC +0.3FLC 77%Rel PTI +94
ST SR BD DF RA TW RV RL FA
+2.7 +0.4 +1.7 +3.1 H1.6 +1.0 H0.7 S0.2 L0.3
FU RH RW UC UD TP TL
+0.4 +1.2 +2.4 -0.7 D0.9 C1.1 -0.5

PINE RIDGE PERFECTO LUXURY-ET USA0000003032261

04/09 USDA PTA +348M +0.10% +33F +0.00% +11P
-0.4DPR +1.1PL +189NM\$ 82NM%ile +189CM\$ 67% Rel
3 App 04/09 PTAT +0.8 +0.4UDC -0.1FLC 65%Rel CPI +87
Appraisal: 90 @ 5-10 Gold Star Dam - 1999
4-02 365D 2X 27050M 5.1% 1380F* 3.6% 976P DHIA

MOZIERS OPTION ANNIE-ET USA0000003073844

04/09 USDA PTA -513M +0.13% -2F +0.02% -14P
-3.0DPR -3.2PL -188NM\$ 2NM%ile -184CM\$ 55% Rel
3 Rec YDev: -3094M -85F -88P
3 App 04/09 PTAT +1.9 +1.0UDC +1.6FLC 56%Rel CPI +17
Appraisal: 91 @ 3-11 (91/88)
ST SR BD DF RA TW RV RL FA FU RH RW UC UD TP TL
43 43 44 44 25 40 35 25 22 40 40 40 44 32 25 24
3-02 321D 2X 15390M 4.4% 671F 3.3% 506P 95

JENSGOLDEN BIONIC OPTION USA000000602643 14GU273

04/09 USDA PTA +19M +0.11% +19F +0.01% +2P
-3.5DPR -4.8PL -153NM\$ 0NM%ile -150CM\$ 94% Rel
AGA 04/09 PTAT +0.5 +0.1UDC +1.4FLC 93%Rel PTI +29

LAVON FARMS KC ANNA 85 @ 2-03 (90/90)
2-00 357D 2X 12980M 4.9% 641F 3.4% 439P 98

PANTHER SPRING SHARP ABIGAIL-ET USA0000003054469

04/09 USDA PTA -205M +0.04% -2F +0.00% -6P
-1.9DPR -1.6PL -118NM\$ 7NM%ile -117CM\$ 47% Rel

MOZIERS OPTION AMANDA-ET 84 @ 3-10 (84/84)
2-06 365D 2X 21620M 4.7% 1020F 3.3% 718P 100
MOZIERS OPTION ANYA-ET 80 @ 3-09 (81/77)

3RD DAM: BLACKWATER ENHANCER ALLIE USA3042171

Appraisal: 84 @ 2-10
2-05 305D 3X 16030M 5.6% 903F 3.1% 502P DHIR

4TH DAM: BLACKWATER P JAY ADDIE USA0000003001068

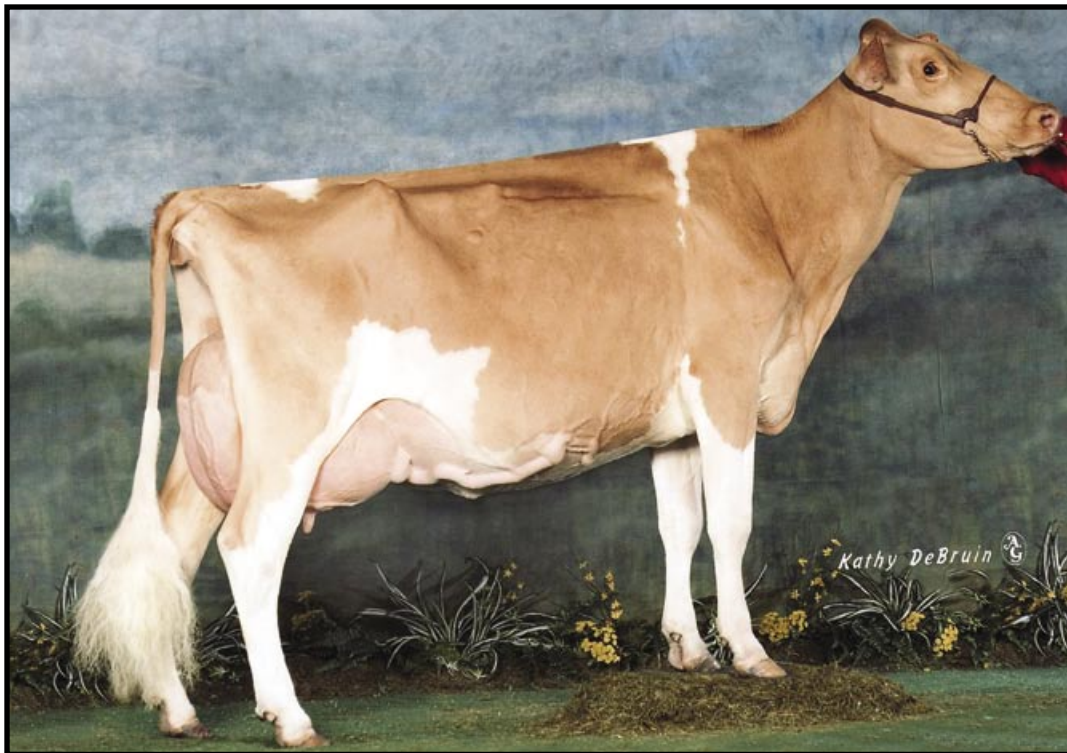
Appraisal: 86 @ 5-10 Gold Star Dam - 1996
3-05 333D 2X 21330M 5.0% 1072F 3.7% 798P DHIA
DAM OF BLACKWATER LORD AMEN



Moziers Lux Anne of Lavon Farms EX-92 (94/89)

Grand Champion NGS-Louisville
Res. Grand Champion NGS-Madison
Sells as Lot 2

Sells with a Bull Contract to Select Sires



Moziers Lux Anne of Lavon Farms EX-92 (94/89)

3-09 305D 19,530M 4.7% 909F 3.3% 648P #90 on the April '09 CPI List

All-American Sr. 2-Year-Old 2006 & Sr. 3-Year-Old 2007

Sells as Lot 2 ~ Super Lux out of Full Sister to Dam of Lot 3

LOT 3 MOZIERS LUX ANDREA-ET

USA000068019969

Born: 12-01-2007 Tattoo LE M716 RE M716
Breeder & Owner: PANTHER SPRING SYNDICATE
29773 METCALF RD
LOUISBURG KS 66053
913-837-3946

PA: +175M +0.06% +18F +0.00% +6P +2CM\$ +2NM\$
+0.9PTAT +0.6UDC +0.4FLC -1.2DPR -1.4PL +49PTI
ST SR BD DF RA TW RV RL FA
+1.3 -0.1 +0.8 +2.0 L0.1 +0.3 H0.7 P0.1 L0.3
FU RH RW UC UD TP TL
+0.7 +1.1 +1.7 +0.2 D0.2 C1.8 -0.8

PINE RIDGE SUPER LUX-ET USA00000604313 7GU385

04/09 USDA PTA +672M +0.03% +35F +0.00% +21P
+0.3DPR -0.6PL +133NM\$ 50NM%ile +134CM\$ 81% Rel
AGA 04/09 PTAT +0.6 +0.1UDC +0.3FLC 77%Rel PTI +94
ST SR BD DF RA TW RV RL FA
+2.7 +0.4 +1.7 +3.1 H1.6 +1.0 H0.7 S0.2 L0.3
FU RH RW UC UD TP TL
+0.4 +1.2 +2.4 -0.7 D0.9 C1.1 -0.5

MOZIERS OPTION ANYA-ET USA000003079584

04/09 USDA PTA -322M +0.09% +1F +0.00% -10P
-2.7DPR -2.2PL -130NM\$ 6NM%ile -130CM\$ 47% Rel
1 Rec YDev: -2946M -84F -93P
1 App 04/09 PTAT +1.2 +1.0UDC +0.4FLC 46%Rel CPI +0
Appraisal: 80 @ 3-09 (81/77)
ST SR BD DF RA TW RV RL FA FU RH RW UC UD TP TL
33 28 33 25 33 28 29 31 18 28 32 32 35 31 30 24

MOZIERS MERLIN ANDIE 85 @ 2-01 (85/88)

3RD DAM: BLACKWATER ENHANCER ALLIE USA3042171

Appraisal: 84 @ 2-10
2-05 305D 3X 16030M 5.6% 903F 3.1% 502P DHIR

4TH DAM: BLACKWATER P JAY ADDIE USA000003001068

Appraisal: 86 @ 5-10 Gold Star Dam - 1996
3-05 333D 2X 21330M 5.0% 1072F 3.7% 798P DHIA
DAM OF BLACKWATER LORD AMEN

TROTACRE JAY MR LUXURY-ET USA000000602751 7GU339

04/09 USDA PTA +955M -0.12% +22F -0.03% +25P
+0.9DPR +1.4PL +188NM\$ 70NM%ile +178CM\$ 97% Rel
AGA 04/09 PTAT +1.2 +0.5UDC +0.7FLC 96%Rel PTI +105

PINE RIDGE PERFECTO LUXURY-ET USA000003032261

04/09 USDA PTA +348M +0.10% +33F +0.00% +11P
-0.4DPR +1.1PL +189NM\$ 82NM%ile +189CM\$ 67% Rel
3 App 04/09 PTAT +0.8 +0.4UDC -0.1FLC 65%Rel CPI +87
Appraisal: 90 @ 5-10 Gold Star Dam - 1999
4-02 365D 2X 27050M 5.1% 1380F* 3.6% 976P DHIA

JENSGOLDEN BIONIC OPTION USA000000602643 14GU273

04/09 USDA PTA +19M +0.11% +19F +0.01% +2P
-3.5DPR -4.8PL -153NM\$ 0NM%ile -150CM\$ 94% Rel
AGA 04/09 PTAT +0.5 +0.1UDC +1.4FLC 93%Rel PTI +29

PANTHER SPRING SHARP ABIGAIL-ET USA000003054469

04/09 USDA PTA -205M +0.04% -2F +0.00% -6P
-1.9DPR -1.6PL -118NM\$ 7NM%ile -117CM\$ 47% Rel

MOZIERS OPTION AMANDA-ET 84 @ 3-10 (84/84)
2-06 365D 2X 21620M 4.7% 1020F 3.3% 718P 100
MOZIERS OPTION ANNIE-ET 91 @ 3-11 (91/88)
3-02 321D 2X 15390M 4.4% 671F 3.3% 506P 95
DAM OF MOZIERS LUX ANN OF LAVON FARMS