

LOT 4 FIRST CHOICE YOGI OR LORAL FROM ALTANN

Breeder & Owner: AARON GABLE
2345 BRUMBAUGH RD
NEW ENTERPRISE PA 16664
814-766-3272

SELLING FIRST CHOICE FEMALE FROM ALTANN. TWO (2) HEIFERS BY YOGI ARE DUE OCT. 6. FOUR (4) HEIFERS BY LORAL ARE DUE OCT. 22. CALVES WILL BE BORN AT TRANS-OVA IN IOWA. THE CALF MAY BE PICKED UP FROM THAT FACILITY BY 30 DAYS OF AGE OR FROM SNIDER HOMESTEAD IN PA BY 3 MONTHS OF AGE.

EDGEWATER MEADOWS YOGIBEAR-ET USA604917 7GU402

04/09 USDA PTA +318M +0.17% +42F +0.01% +12P
-0.7DPR +0.1PL +170NM\$ 66NM%ile +175CM\$ 88% Rel
AGA 04/09 PTAT +1.8 +1.2UDC +1.4FLC 76%Rel PTI +139
ST SR BD DF RA TW RV RL FA
+2.2 +1.5 +1.8 +1.4 H0.3 +1.9 H0.6 P0.9 S0.7
FU RH RW UC UD TP TL
+2.4 +2.0 +1.4 +0.4 S1.4 C1.9 +0.4

CEDAR FRINGED ALTANN USA000003045188

04/09 USDA PTA +972M +0.08% +56F -0.07% +19P
+0.8DPR +2.7PL +327NM\$ 97NM%ile +303CM\$ 81% Rel
4 Rec YDev: +2601M +145F +61P
5 App 04/09 PTAT +1.7 +1.0UDC +0.7FLC 79%Rel CPI +162
Appraisal: 95 @ 6-11 (95/93) Gold Star Dam - 2001
ST SR BD DF RA TW RL FA FU RH RW UC UD TP TL
26 36 44 50 18 30 27 28 33 39 45 27 21 31 30
2-02 305D 2X 19300M 4.3% 829F 3.2% 613P DHIR
3-11 320D 2X 23380M 4.4% 1034F 3.1% 731P DHIA
4-10 305D 2X 17440M 4.8% 838F 3.3% 584P DHIA
6-04 365D 2X 31150M 4.8% 1486F 3.0% 941P 94
8-07 365D 2X 25830M 4.9% 1273F 3.1% 791P DHIA
2999D 168,160M 4.8% 8,035F 3.3% 5,522P LIFE
DAM OF RES. ALL-AMERICAN PRODUCE OF DAM 2008
ALL-AMERICAN 4-YEAR-OLD 2000
NOM. ALL-AMERICAN 5-YEAR-OLD 2001
HM ALL-AMERICAN AGED COW 2002
RES. ALL-AMERICAN JR. 2-YEAR-OLD 1998
JR ALL-AMERICAN 1998, 2000, 2001
HM JR. ALL-AMERICAN JR. 3-YEAR-OLD 1999
GRAND CHAMPION NGS-HARRISBURG 2000 & 2001
GRAND CHAMPION NGS-MADISON 2000

SNIDERS OPTION AARON-ET PTI +216
SNIDERS OPTION AVENGER-ET PTI +112
SNIDERS VALORS ALIANCE-ET PTI +92
SNIDERS RONALDS ALSTAR PTI +186
SNIDERS TILLER ALTANIC-ET @ SELECT SIRES
SNIDERS DEEMAND ADACKA-ET @ TAURUS
SNIDERS BEN ALIYAH 93 @ 4-08 (93/93)
5-07 365D 2X 21930M 4.6% 1016F 3.7% 815P DHIA
NOM. ALL-AMERICAN AGED COW 2002
DAM OF SNIDERS LORAL ARCHIE +69 PTI
SNIDERS DIVIDEND AVARY 91 @ 4-07 (93/88)
5-03 342D 2X 21490M 3.7% 788F 2.9% 623P 95
NOM. ALL-AMERICAN JR. 2-YEAR-OLD 2002
SNIDERS DEEMAND ALABYE-ET 90 @ 5-01 (90/91)
3-04 349D 2X 16150M 4.6% 735F 3.3% 537P 93
RES. ALL-AMERICAN JR. 3-YEAR-OLD 2007
2ND 4-YEAR-OLD NGS-LOUISVILLE 2008
SNIDERS VALORS ANDEE-ET 92 @ 5-11 (93/91)
4-02 365D 2X 18430M 4.2% 783F 3.2% 584P DHIA
4TH AGED COW NGS-MADISON 2008
SNIDERS OPTION AVEE 90 @ 3-07 (91/85)
3-03 365D 2X 19330M 5.0% 970F 3.6% 696P DHIA
SNIDERS OPTION AMMEE-ET 86 @ 2-03 (88/86)
2-00 305D 2X 13330M 4.8% 635F 3.2% 424P 84
SNIDERS VALORS ASHLYN-ET 90 @ 3-08 (90/85)
3-01 365D 2X 25320M 4.6% 1169F 3.2% 807P 42
SNIDERS VALORS AMELIA-ET 86 @ 3-07 (85/81)
3-01 331D 2X 18670M 3.9% 735F 3.2% 599P 100
SNIDERS VALORS ALURE-ET 76 @ 4-05 (71/87)
3-00 365D 2X 25000M 5.0% 1252F 3.7% 913P DHIA
SNIDERS VALORS AXELLE-ET 80 @ 4-05 (76/84)
2-01 365D 2X 22000M 4.4% 961F 3.3% 719P DHIA
SNIDERS VALORS ALLI-ET 88 @ 5-11 (88/92)
5-02 365D 2X 25450M 4.2% 1078F 3.1% 785P DHIA
SNIDERS OPTION ALOE-ET 85 @ 2-02 (85/86)
3-01 310D 2X 14400M 4.3% 614F 3.3% 480P 95
SNIDERS GOLDUST ALTANNA-ET 87 @ 2-06 (90/87)

TROTACRE MERCURY LORAL-ET USA000000602121 7GU322

04/09 USDA PTA -64M +0.00% -2F +0.00% -2P
-2.4DPR -2.8PL -163NM\$ 0NM%ile -164CM\$ 97% Rel
AGA 04/09 PTAT +1.5 +0.5UDC +0.8FLC 96%Rel PTI +18
ST SR BD DF RA TW RV RL FA
+2.4 +2.3 +2.4 -0.3 L0.1 +1.9 H0.4 P0.3 S0.4
FU RH RW UC UD TP TL
+2.1 +0.5 +0.4 -0.4 S0.5 C0.8 +0.5

SHERMA VICTORY ELLAS ENHANCER USA600510 29GU918

04/09 USDA PTA +681M -0.02% +27F -0.08% +8P
-1.3DPR -1.6PL +31NM\$ 25NM%ile +3CM\$ 97% Rel
AGA 04/09 PTAT +1.3 +0.8UDC +0.4FLC 97%Rel PTI +66

CEDAR FRINGED AGGIE BY FRANK

04/09 USDA PTA +136M +0.06% +16F -0.03% +0P
+1.9DPR +2.8PL +143NM\$ 71NM%ile +134CM\$ 66% Rel
5 Rec YDev: +358M +34F +8P
2-01 289D 2X 13640M 4.7% 647F 3.4% 465P DHIA
3-00 303D 2X 17730M 4.4% 773F 3.5% 615P DHIA
4-00 305D 2X 21020M 4.6% 962F 3.3% 695P DHIA
5-00 288D 2X 20550M 4.6% 940F 3.4% 699P DHIA
6-01 305D 2X 10540M 3.6% 379F 3.4% 359P DHIR

3RD DAM: CEDAR FRINGED ANABEL BY ADML DAVIS

2-01 305D 2X 15050M 4.9% 734F 3.5% 524P DHIA
3-01 297D 2X 15370M 4.9% 759F 3.7% 566P DHIA
4-00 305D 2X 16730M 4.8% 797F 3.6% 609P DHIA
5-05 295D 2X 16520M 5.2% 863F 3.6% 596P DHIA
6-04 290D 2X 15650M 5.1% 800F 3.6% 558P DHIA

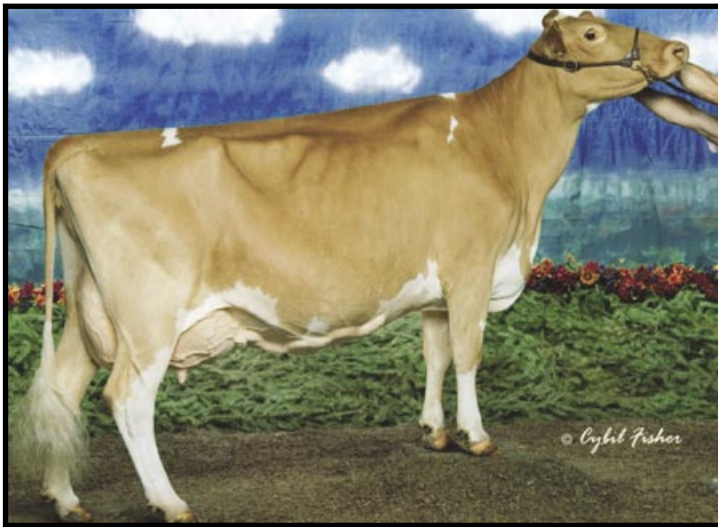


Sniders Ben Aliyah EX-93
5-07 365D 21,930M 4.6% 1,016F 3.7% 815P
Nom. All-American Aged Cow 2002
Maternal Sister to Lot 4



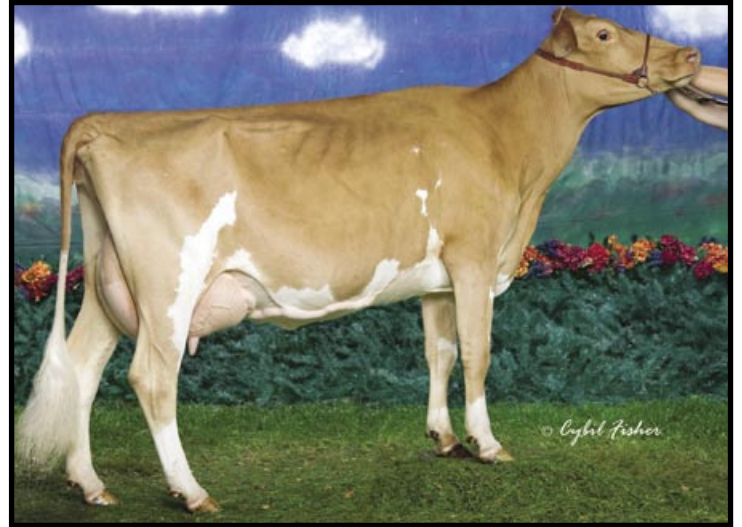
Cedar Fringed Altann EX-95

Dam of Lot 4



Sniders Valors Andee-ET EX-92

5-03 342D 2X 21490M 3.7% 788F 2.9% 623P
4th Aged Cow NGS-Madison 2008
Res. All-American Produce of Dam 2008
Maternal Sister of Lot 4



Sniders Deemand Alabye EX-90

3-04 349D 16,150M 4.6% 735F 3.3% 537P
Res. All-American Jr. 3-Year-Old 2007
Res. All-American Produce of Dam 2008
Maternal Sister of Lot 4



Sniders Option Avee EX-90

4th Jr. 2-Year-Old NGS-Harrisburg 2003
Maternal Sister of Lot 4



Sniders Omni Aerolin EX-93

Nom. All-American Aged Cow 2008
Maternal Family Member of Lot 4