



Spring River Royal Happy EX-95
4-Time National Res. Grand Champion
Maternal Sister to Lot 5



Marlee Valiant Hailey EX-94
2-Time Res. All-American
Maternal Sister to Dam of Lot 5

LOT 5 SPRING RIVER NOMAR HUG-ET USA000068025547

Born: 03-23-2009 Tattoo LE SR189

SELLING OPEN

Breeder & Owner: CALVIN KENLEE

630 S DADE 1

GOLDEN CITY

MO 64748

417-388-0185

PA: +550M -0.06% +15F +0.00% +17P +71CM\$ +72NM\$

+1.4PTAT +1.1UDC +0.6FLC -0.2DPR -0.1PL +89PTI

ST SR BD DF RA TW RV RL FA

+4.0 +1.3 +1.1 +1.2 L1.0 +1.7 H0.1 P0.4 S0.4

FU RH RW UC UD TP TL

+2.1 +2.2 +1.6 -0.1 S1.8 C0.9 -1.0

LANG HAVEN SPIDER NOMAR USA000068013555 7GU429

PA: +1198M +0.03% +58F +0.01% +39P +220CM\$ +216NM\$

+1.7PTAT +0.6UDC +0.5FLC -1.3DPR -1.1PL +177PTI

ST SR BD DF RA TW RV RL FA

+4.4 +1.6 +1.6 +2.5 L0.9 +1.6 H0.1 P0.1 S0.4

FU RH RW UC UD TP TL

+0.7 +2.3 +2.3 +0.0 S0.2 C0.8 -0.9

MARLEE BOSSMAN HOPE USA000003051618

04/09 USDA PTA -99M -0.15% -29F -0.01% -5P

+0.9DPR +1.0PL -73NM\$ 13NM%ile -78CM\$ 60% Rel

3 Rec YDev: +135M -52F +1P

3 App 04/09 PTAT +1.1 +1.5UDC +0.6FLC 57%Rel CPI -2

Appraisal: 91 @ 5-06 (91/88)

ST SR BD DF RA TW RL FA FU RH RW UC UD TP TL

50 37 33 36 32 39 27 18 34 41 40 29 31 24 32

2-08 305D 2X 13830M 3.7% 518F 3.3% 458P DHIA

4-01 326D 2X 14770M 3.9% 573F 3.4% 500P 91

5-01 365D 2X 18690M 4.0% 749F 3.4% 627P 93

7-04 350D 2X 17220M 3.4% 588F 3.2% 545P DHIA

HM ALL-AMERICAN 4-YEAR-OLD 2001

HM ALL-AMERICAN 5-YEAR-OLD 2002

2ND NGS-LOUISVILLE 2001 & 2002

MARLEE JAKE HALY 90 @ 4-04 (90/85)

5-06 327D 3X 19270M 3.7% 714F 2.8% 541P 75

SPRING RIVER ROYAL HAPPY 95 @ 6-01 (96/94)

5-10 365D 2X 27230M 3.3% 903F 3.1% 847P 87

ALL-AMERICAN SR. 3-YEAR-OLD 2005

HM ALL-AMERICAN 4-YEAR-OLD 2006

RES. ALL-AMERICAN 5-YEAR-OLD 2007

RES. GRAND CHAMPION NGS-LOUISVILLE & MADISON 2005

RES. GRAND CHAMPION NGS-HARRISBURG 2006

RES. GRAND CHAMPION NGS-HARRISBURG 2007

RES. SR. CHAMPION NGS-HARRISBURG 2007

COULEE CREST LUXURY SPIDER-ET USA604229 1GU415

04/09 USDA PTA +877M +0.01% +41F +0.03% +33P

-1.2DPR -1.5PL +126NM\$ 41NM%ile +139CM\$ 86% Rel

AGA 04/09 PTAT +1.4 +0.7UDC +0.1FLC 80%Rel PTI +136

LANG HAVEN OPTION NADIA-ET USA000003073416

04/09 USDA PTA +1518M +0.04% +75F -0.02% +45P

-1.3DPR -0.6PL +305NM\$ 96NM%ile +301CM\$ 64% Rel

3 App 04/09 PTAT +1.9 +0.5UDC +0.8FLC 59%Rel CPI +215

Appraisal: 90 @ 3-07 (90/91)

3-04 365D 2X 37270M* 5.9% 2205F* 3.3% 1212P* DHIA

MARFRED BOSSMAN-ET USA000000601056 7GU306

04/09 USDA PTA -182M +0.01% -6F +0.00% -6P

+0.1DPR +0.8PL -33NM\$ 8NM%ile -34CM\$ 96% Rel

AGA 04/09 PTAT +0.7 +0.8UDC -0.1FLC 96%Rel PTI -2

WALLISS HOPE BLAZE USA000003035818

04/09 USDA PTA -657M -0.06% -39F +0.05% -13P

+1.3DPR -0.5PL -159NM\$ 3NM%ile -143CM\$ 53% Rel

3 Rec YDev: -697M -62F +2P

4 App 04/09 PTAT -0.3 +0.8UDC +0.3FLC 51%Rel CPI -64

Appraisal: 88 @ 6-01

2-10 311D 2X 12420M 3.8% 478F 3.7% 461P DHIA

3-10 305D 2X 13350M 4.2% 555F 3.6% 475P DHIR

5-05 305D 2X 15500M 3.7% 581F 3.4% 532P DHIA

NOM. ALL-AMERICAN FALL CALF 1995

NOM. JR. ALL-AMERICAN FALL YEARLING 1996

MARLEE VALIANT HAILEY 94 @ 6-06 (94/92)

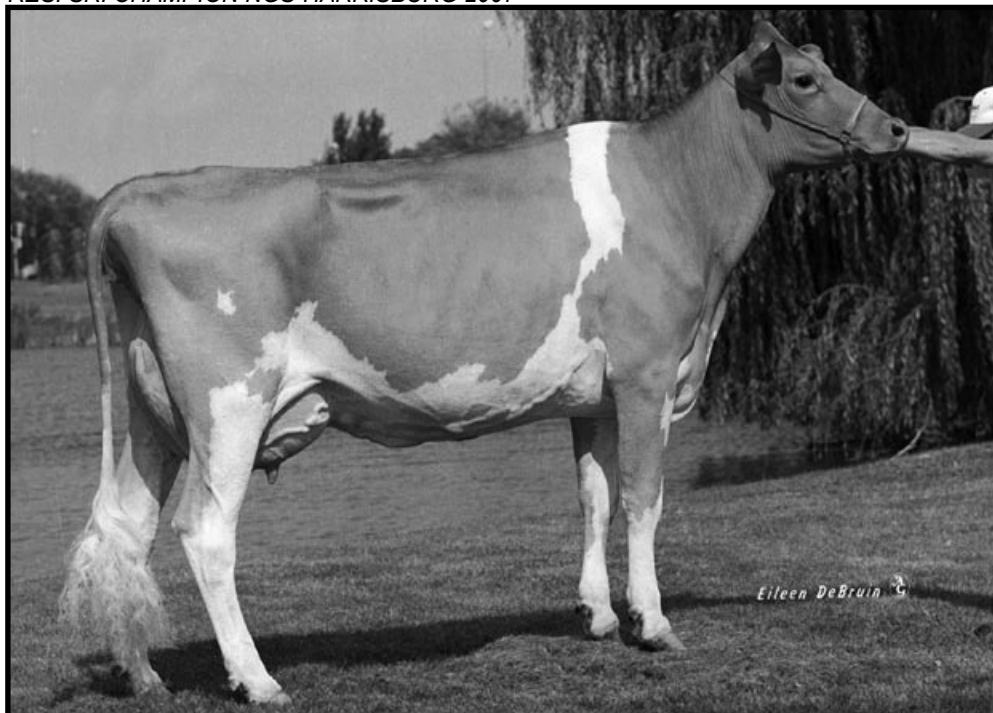
4-00 365D 2X 27890M 4.2% 1180F 3.3% 907P DHIA

RES. ALL-AMERICAN SPRING YEARLING 2001

RES. ALL-AMERICAN JR. 3-YEAR-OLD 2003

HM ALL-AMERICAN 4-YEAR-OLD 2004

DTRS SCORED EX-91 & EX-90



Marlee Bossman Hope

EX-91

2-Time HM All-American

Dam of Lot 5