



OMalley Hillpoint Skip Classy-ET

All-American Spring Yearling 2008

Jr. Champion NGS-Madison 2008

Full Sister of Lot 36

Maternal Family Member of Lot 37

LOT 36 SKIPPER x CHARITY EMBRYOS

Breeder & Owner: MITCHELL & KRISTEN O MALLEY
GILMAN WI 54433
715-447-8535

SELLING THREE (3) #1 STAGE 4 EMBRYOS BY SKIPPER FROM CHARITY.
BUYER RESPONSIBLE FOR COST AND LIABILITY OF SHIPPING.

COULEE CREST LUXURY SKIPPER-ET USA604230 200GU108

04/09 USDA PTA +833M -0.06% +27F -0.05% +18P
-0.7DPR +0.2PL +132NM\$ 45NM%ile +115CM\$ 76% Rel
AGA 04/09 PTAT +1.7 +1.3UDC +0.1FLC 71%Rel PTI +103
ST SR BD DF RA TW RV RL FA
+1.3 -0.2 +0.0 +1.5 L1.9 +0.3 H0.1 P1.5 L0.4
FU RH RW UC UD TP TL
+1.3 +3.0 +1.7 +0.5 S1.1 C2.6 -2.3

LONE ACRES TILLER CHARITY USA000003084865

04/09 USDA PTA +28M +0.04% +8F +0.00% +2P
-1.5DPR -1.8PL -59NM\$ 16NM%ile -56CM\$ 44% Rel
1 Rec YDev: -29M +11F +3P
2 App 04/09 PTAT +1.7 +0.8UDC +1.3FLC 48%Rel CPI +57
Appraisal: 87 @ 2-10 (88/88)
ST SR BD DF RA TW RV RL FA FU RH RW UC UD TP TL
33 19 2 2 27 27 23 26 28 18 33 23 24 35 33 44 35
2-01 305D 2X 16730M 4.1% 692F 3.1% 523P 94
3-08 347D 2X 14670M 4.8% 710F 3.5% 510P 84
HM JR. ALL-AMERICAN FALL YEARLING 2005
5TH FALL YEARLING NGS-MADISON 2005

OMALLEY HILLPOINT SKIP CLASSY-ET
ALL-AMERICAN SPRING YEARLING 2008
NOM. ALL-AMERICAN SPRING CALF 2007
JR. CHAMPION NGS-MADISON 2008
RES. JR. CHAMPION NGS-LOUISVILLE 2008

THIRD DAM: LONE ACRES BT CAROL USA000003027040

Appraisal: 84 @ 5-02
4-10 305D 2X 17720M 4.6% 823F 3.7% 649P DHIR

FOURTH DAM: LONE ACRES VIKING CINDY USA2994255

Appraisal: 91 @ 3-10
JR CHAMPION WI STATE FAIR 1992
RES. GRAND CHAMPION WI STATE FAIR 1993

TROTACRE JAY MR LUXURY-ET USA000000602751 7GU339

04/09 USDA PTA +955M -0.12% +22F -0.03% +25P
+0.9DPR +1.4PL +188NM\$ 70NM%ile +178CM\$ 97% Rel
AGA 04/09 PTAT +1.2 +0.5UDC +0.7FLC 96%Rel PTI +105

COULEE CREST ENHANCER SNOW-ET USA000003050736

04/09 USDA PTA +897M +0.08% +53F -0.05% +20P
-2.2DPR -2.2PL +101NM\$ 60NM%ile +85CM\$ 73% Rel
1 App 04/09 PTAT +1.4 +0.7UDC +0.0FLC 70%Rel CPI +121
Appraisal: 88 @ 2-08
2-01 365D 2X 21059M 6.3% 1319F 3.7% 784P DHIA

TROTACRE LORAL TILLER-ET USA000000603341 7GU360

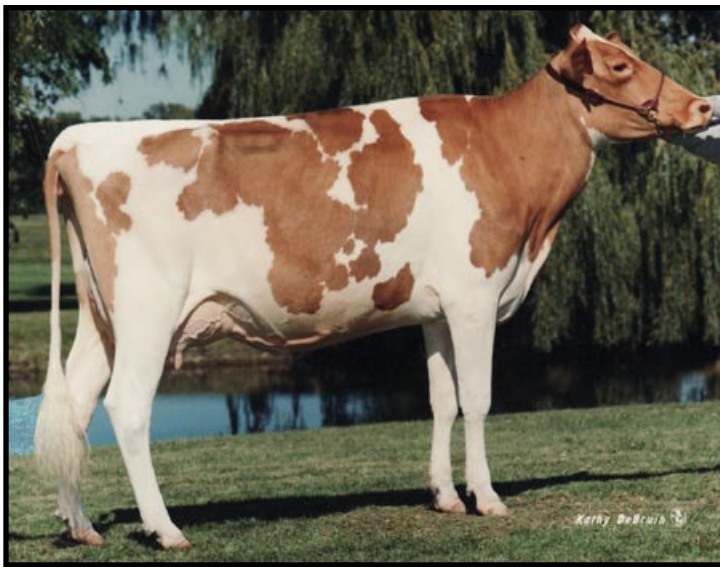
04/09 USDA PTA +544M +0.02% +28F -0.05% +9P
-3.5DPR -3.9PL -106NM\$ 0NM%ile -121CM\$ 98% Rel
AGA 04/09 PTAT +2.7 +1.0UDC +1.9FLC 98%Rel PTI +103

LONE ACRES PERFECTO CALLIE USA000003054527

04/09 USDA PTA -484M +0.06% -11F +0.05% -7P
+0.5DPR +3.2PL +84NM\$ 55NM%ile +101CM\$ 60% Rel
5 Rec YDev: -588M -5F +4P
3 App 04/09 PTAT +0.7 +0.7UDC +0.5FLC 59%Rel CPI +17
Appraisal: 90 @ 10-06 (90/88)
2-07 305D 2X 16520M 4.2% 701F 3.4% 567P DHIA
3-10 344D 2X 18420M 4.5% 835F 3.7% 675P DHIA
5-00 330D 2X 17660M 4.6% 817F 3.3% 586P 91
6-01 355D 2X 15260M 4.3% 653F 3.5% 531P 91
7-01 356D 2X 13470M 4.2% 563F 3.5% 467P 93
8-03 344D 2X 18590M 3.8% 715F 3.5% 646P 94
9-02 338D 2X 14610M 4.0% 582F 3.8% 557P 95
10-03 345D 2X 16540M 3.9% 649F 3.6% 598P 98
2820D 135,390M 4.2% 5,727F 3.5% 4,797P LIFE

LONE ACRES MM COLLEEN

3-01 346D 2X 15140M 4.0% 606F 3.3% 497P 90
LONE ACRES ROYAL OAK CARLEY 72 @ 6-08 (68/64)
4-01 305D 2X 14020M 4.9% 687F 3.8% 534P 94
LONE ACRES ALSTAR CARMEL 81 @ 2-09 (84/81)
2-01 308D 2X 10790M 4.5% 488F 3.7% 394P DHIA



Lone Acres Perfecto Catie EX-91

All-American Winter Yearling & Sr. 2-Year-Old
Maternal Family Member of Lot 36 & 37

LOT 37 LONE ACRES S CAITLIN

Born: 10-22-2008 Tattoo LE K318 RE K318

Breeder & Owner: FREDERICK F KIPP

LONE ACRES FARM

BOX 291

NORTH PRAIRIE WI 53153

262-893-5910

PA: -179M +0.14% +14F +0.01% -4P +46CM\$ +42NM\$

+1.6PTAT +1.2UDC +1.5FLC -2.1DPR +0.4PL +72PTI

ST SR BD DF RA TW RV RL FA

+1.0 +1.1 +1.0 +0.9 H0.3 +1.2 H1.1 P0.7 S0.4

FU RH RW UC UD TP TL

+1.7 +2.1 +1.7 +1.6 S1.2 C1.2 +0.8

COULEE CREST R O SILVERADO-ET USA604520 200GU110

04/09 USDA PTA -55M +0.13% +19F -0.01% -3P

-3.9DPR -1.6PL -60NM\$ 8NM%ile -62CM\$ 90% Rel

AGA 04/09 PTAT +2.2 +1.0UDC +2.4FLC 77%Rel PTI +90

ST SR BD DF RA TW RV RL FA

+3.5 +2.6 +2.8 +2.1 L0.4 +2.8 H2.0 P0.8 S0.5

FU RH RW UC UD TP TL

+1.4 +2.9 +2.7 +1.3 S0.3 C1.1 +2.2

LONE ACRES BINGO CHERRY USA000068004664

04/09 USDA PTA -303M +0.14% +9F +0.03% -5P

-0.2DPR +2.4PL +143NM\$ 71NM%ile +153CM\$ 50% Rel

3 Rec YDev: -1094M +7F -23P

2 App 04/09 PTAT +0.9 +1.4UDC +0.6FLC 45%Rel CPI +54

Appraisal: 87 @ 4-06 (91/86)

ST SR BD DF RA TW RV RL FA FU RH RW UC UD TP TL

21 28 26 18 25 21 33 27 37 50 44 40 47 37 26 22

2-04 321D 2X 13 460M 4.5% 604F 3.6% 481P 95

3-04 318D 2X 12700M 4.6% 585F 3.7% 466P 98

Lone Acres Tiller Charity VG-87

HM Jr. All-American Fall Yearling 2005
Dam of Lot 36

Maternal Family Member of Lot 37

USA000068025145

SELLING OPEN

JENSGOLDEN PROKING ROYAL OAK USA602216 7GU330

04/09 USDA PTA +498M +0.07% +34F +0.00% +16P

-3.9DPR -0.6PL +61NM\$ 25NM%ile +64CM\$ 96% Rel

AGA 04/09 PTAT +2.1 +0.8UDC +1.5FLC 95%Rel PTI +130

COULEE CREST LORRY SARAH USA000003062140

04/09 USDA PTA +1243M +0.05% +64F -0.05% +31P

-2.0DPR -1.5PL +173NM\$ 79NM%ile +158CM\$ 67% Rel

1 App 04/09 PTAT +1.7 +0.3UDC +0.3FLC 63%Rel CPI +166

Appraisal: 87 @ 3-00

2-03 365D 2X 29177M 5.2% 1508F* 3.2% 920P 95

MYOWN POKER BINGO-ET USA000000604588 200GU111

04/09 USDA PTA +718M +0.07% +43F +0.02% +27P

-0.2DPR +2.0PL +317NM\$ 95NM%ile +328CM\$ 74% Rel

AGA 04/09 PTAT +0.5 +0.3UDC +0.5FLC 66%Rel PTI +136

LONE ACRES V CHOCOLATE USA000003077461

04/09 USDA PTA -875M +0.14% -16F +0.02% -25P

-0.8DPR +0.3PL -99NM\$ 9NM%ile -95CM\$ 55% Rel

2 Rec YDev: -2312M -50F -69P

2 App 04/09 PTAT +1.0 +1.3UDC +0.0FLC 54%Rel CPI -40

Appraisal: 83 @ 2-10 (86/78)

2-00 305D 2X 12490M 4.2% 523F 3.2% 395P 92

3-04 282D 2X 10900M 4.4% 485F 3.3% 357P 93

THIRD DAM: LONE ACRES BT CAROL USA000003027040

Appraisal: 84 @ 5-02

4-10 305D 2X 17720M 4.6% 823F 3.7% 649P DHIR

FOURTH DAM: LONE ACRES VIKING CINDY USA2994255

Appraisal: 91 @ 3-10

JR CHAMPION WI STATE FAIR 1992

RES. GRAND CHAMPION WI STATE FAIR 1993