

GG RIPLEY FARMS MR A C REAGAN-ET USA000068024885

Born: 07-23-2008 Tattoo LE R2753 RE R2753

SELLING OPEN

Breeder & Owner: DANIEL & SHARI RIPLEY
1139 CUTLER SCHOOLHOUSE RD
CORTLAND NY 13045
315-496-3220

PA: +719M -0.03% +28F -0.04% +17P +247CM\$ +258NM\$
+1.8PTAT +1.3UDC +1.7FLC -0.4DPR +2.3PL +147PTI
ST SR BD DF RA TW RV RL FA
+3.4 +0.3 +0.1 +1.5 L0.5 +0.2 H0.9 P0.8 S0.8
FU RH RW UC UD TP TL
+1.7 +2.1 +1.4 +0.8 S1.7 C1.5 -0.7

KNAPPS MR AMERICA-ET USA000000603603 200GU102

04/09 USDA PTA +692M -0.02% +27F -0.08% +9P
-0.9DPR +1.0PL +168NM\$ 62NM%ile +142CM\$ 84% Rel
AGA 04/09 PTAT +1.5 +1.0UDC +0.6FLC 84%Rel PTI +99
ST SR BD DF RA TW RV RL FA
+2.8 -0.1 +0.0 +1.4 L1.7 -0.1 H0.2 P1.0 S0.2
FU RH RW UC UD TP TL
+1.0 +1.8 +1.3 +1.0 S1.1 C1.2 -1.0

RIPLEY FARMS G CONNI ROSE-ET USA000003083058

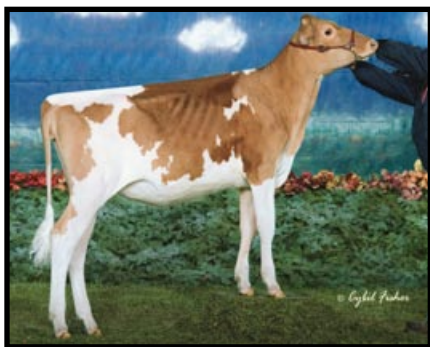
04/09 USDA PTA +746M -0.03% +28F +0.00% +25P
+0.2DPR +3.6PL +347NM\$ 97NM%ile +352CM\$ 56% Rel
2 Rec YDev: +3132M +132F +103P
2 App 04/09 PTAT +2.0 +1.5UDC +2.7FLC 50%Rel CPI +189
Appraisal: 91 @ 4-02 (92/91)
ST SR BD DF RA TW RV RL FA FU RH RW UC UD TP TL
44 26 22 31 24 22 33 22 33 41 35 31 24 35 38 23
2-01 339D 3X 22680M 5.0% 1143F 3.4% 762P 94
4-01 305D 3X 23720M 4.5% 1060F 3.3% 781P 97
NOM. ALL-AMERICAN 4-YEAR-OLD 2007
GRAND CHAMPION NEW YORK STATE FAIR 2007
#22 ON THE APRIL '09 CPI LIST

RIPLEY FARMS ROYALTY CAESAR-ET @ SELECT SIRES



Low Brook Goldfoot Conny EX-90

2-00 365D 29,014M 4.1% 1,193F 3.1% 903P
Granddam of Lot 23



Royalties From Goldfoot Conny

On Left - 3rd Winter Calf NGS-Harrisburg '08
On Right - 3rd Winter Calf NGS-Madison '08
Maternal Sisters to the Dam of Lot GG



SHERMA VICTORY ELLAS ENHANCER USA600510 29GU918

04/09 USDA PTA +681M -0.02% +27F -0.08% +8P
-1.3DPR -1.6PL +31NM\$ 25NM%ile +3CM\$ 97% Rel
AGA 04/09 PTAT +1.3 +0.8UDC +0.4FLC 97%Rel PTI +66

KNAPPS PERFECTO ALFINA USA000003021761

04/09 USDA PTA -236M +0.06% +0F -0.04% -14P
+0.7DPR +2.1PL +65NM\$ 48NM%ile +51CM\$ 74% Rel
4 App 04/09 PTAT +0.7 +0.3UDC +0.9FLC 73%Rel CPI +19
Appraisal: 92 @ 4-00
3-03 365D 2X 34130M* 4.7% 1614F* 3.4% 1176P* DHIA

LAND OF LIVING P GARRETT-ET USA000000603126 72GU134

LOW BROOK GOLDFOOT CONNY USA000003067544

04/09 USDA PTA +1104M -0.14% +24F -0.02% +32P
+0.2DPR -0.9PL +128NM\$ 67NM%ile +124CM\$ 73% Rel
2 Rec YDev: +4896M +129F +147P
4 App 04/09 PTAT +1.5 -0.1UDC +1.0FLC 67%Rel CPI +118
Appraisal: 90 @ 4-04 (86/90)
2-00 365D 2X 29014M 4.1% 1193F 3.1% 903P 70
4-01 365D 2X 28686M 4.6% 1329F 3.3% 958P 70
1715D 123780M 4.7% 5824F 3.6% 4404P LIFE
DAM OF HM ALL-AMERICAN PRODUCE OF DAM 2007

RIPLEY FARMS G CARMELLO-ET PTI +116
RIPLEY FARMS G CONNI KATE-ET 88 @ 3-05 (90/85)
3-01 305D 3X 22000M 4.4% 969F 3.4% 738P 97
RIPLEY FARMS RO CONI BETH-ET 87 @ 1-11 (88/81)
1-10 305D 3X 20700M 3.6% 754F 2.9% 601P 97
RIPLEY FARMS RO CONI FAITH-ET 65 @ 4-00 (56/85)
2-02 365D 2X 21060M 4.2% 876F 3.1% 655P DHIA
RIPLEY FARMS T CONI HOPE-ET 84 @ 3-11 (80/87)
2-01 357D 3X 21000M 4.9% 1026F 3.1% 658P 97
RIPLEY FARMS GL CONI JO-ET 89 @ 3-06 (88/88)
RIPLEY FARMS A CONI VIDA-ET 88 @ 2-03 (87/87)
RIPLEY FARMS A CONI YVETTA-ET 88 @ 3-00 (89/87)
RIPLEY FARMS SP CONI MAE-ET 87 @ 3-05 (89/88)
RIPLEY FARMS SP CONI QUEEN-ET 86 @ 3-05 (86/83)
RIPLEY FARMS R CONNIE LOU-ET 85 @ 2-07 (85/83)
RIPLEY FARMS A CONI TESS-ET 84 @ 3-00 (84/88)
RIPLEY FARMS T CONI DESIRE-ET 84 @ 2-03 (84/86)
RIPLEY FARMS GL CONI IRENE-ET 84 @ 3-06 (84/87)
RIPLEY FARMS A CONI WENDY-ET 84 @ 3-00 (84/86)
RIPLEY FARMS A CONI ZOEY-ET 82 @ 3-00 (82/83)
RIPLEY FARMS SP CONI OLISA-ET 82 @ 2-08 (82/78)
RIPLEY FARMS SP CONI PEARL-ET 82 @ 3-05 (80/74)
RIPLEY FARMS SP CONI SUE-ET 82 @ 2-10 (82/85)
RIPLEY FARMS RLTY CONI PEAR

NOM. JR ALL-AMERICAN WINTER CALF 2008
3RD WINTER CALF NGS-MADISON 2008
RIPLEY FARMS RLTY CONI NANI-ET
3RD WINTER CALF NGS-HARRISBURG 2008



Ripley Farms G Conni Rose EX-91
2-01 339D 22,680M 5.0% 1,143F 3.4% 762P
Nom. All-American 4-Year-Old 2007
Dam of Lot GG



Ripley Farms SP Coni Queen VG-86
3rd Sr. 2-Year-Old NY State Fair 2008
Maternal Sister to Dam of Lot GG