

LOT 38 LAND OF LIVING D JIMINY USA000068022872

Born: 03-10-2008

FRESH & SELLING OPEN

Breeder: JOHN AYARS & SONS & DR KENNYMANION
MECHANICSBURG OH
Owner: WALNUT CORNER FARM
24689 N 1970 EAST RD
BISMARCK IL 61814
419-594-3666- RAY

PA: -307M -0.02% -18F -0.03% -14P -133CM\$ -112NM\$
+0.1PTAT +0.2UDC +0.2FLC +0.6DPR -0.3PL -43PTI

CHUPPS FARM DISASTER USA000068010303

PA: -197M -0.06% -20F -0.02% -10P -65CM\$ -47NM\$
+0.2PTAT +0.4UDC +0.0FLC +1.2DPR +0.4PL -32PTI
ST SR BD DF RA TW RV RL FA
+1.0 +0.6 -0.2 -1.0 H0.8 +0.5 S0.2 S0.2
FU RH RW UC UD TP TL
+1.0 +0.3 -0.2 -0.7 S1.3 W0.2 -0.9

LAND OF LIVING D JAZZIE-ET USA000068010313

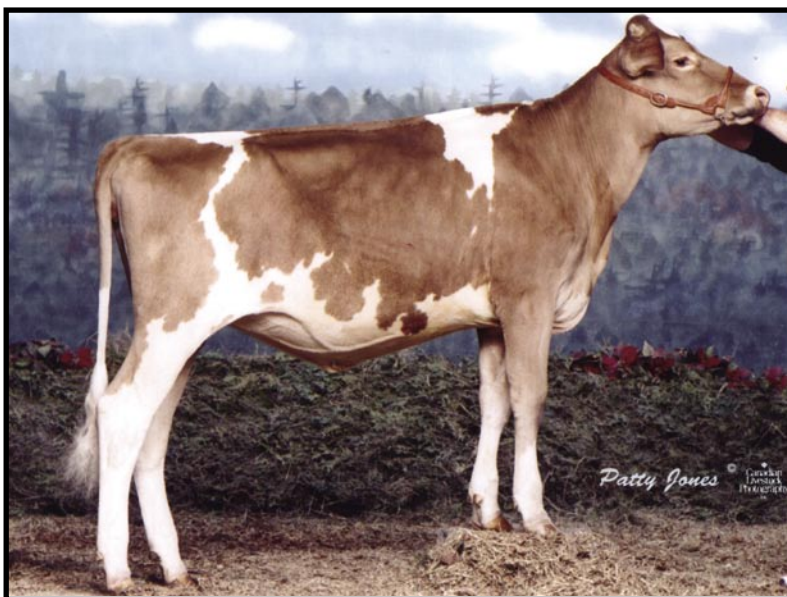
04/10 USDA PTA -417M +0.02% -15F -0.03% -18P
+0.0DPR -1.0PL -176NM\$ 6NM%ile -200CM\$ 44% Rel
1 Rec YDev: -1617M -74F -74P
1 App 04/10 PTAT +0.0 -0.1UDR +0.3FLC 42%Rel CPI -55
Appraisal: 84 @ 2-10 (84/86)
ST SR BD DF RA TW RV RL FA FU RH RW UC UD TP TL
29 1 9 27 31 32 25 37 27 36 21 34 28 34 36 19 19
2-02 305D 2X 18350M 3.8% 705F 3.1% 571P DHIA

3RD DAM: CALLUMLEA GRAND FAWN 000010005208

Appraisal: GP-82 (CAN)
3-00 305D 2X 14263M 3.6% 508F 3.3% 477P CAN

4TH DAM: CALLUMLEA DALLAS TAFFY 195146

Appraisal: GP-84 CAN
6-01 305D 2X 16335M 4.2% 693F 3.3% 535P CAN



Callumlea Magicman Justine
All-American Fall Yearling 2001
Granddam of Lot 38

CHUPPS FARM BOSSMAN MONEY-ET USA000000604440

04/10 USDA PTA -686M +0.05% -22F +0.06% -13P
+0.6DPR -1.7PL -202NM\$ 8NM%ile -173CM\$ 65% Rel
AGA 04/10 PTAT -0.1 -0.1UDC -1.2FLC 66%Rel PTI -74

GR-MAR KE FAVRE DESIGN USA000003075549

04/10 USDA PTA +293M -0.17% -17F -0.09% -7P
+1.7DPR +2.4PL +108NM\$ 61NM%ile +44CM\$ 53% Rel
3 App 04/10 PTAT +0.5 +0.9UDR +1.2FLC 48%Rel CPI +12
Appraisal: 93 @ 5-07 (93/90)
3-05 365D 2X 30100M 3.7% 1119F 3.2% 974P 32

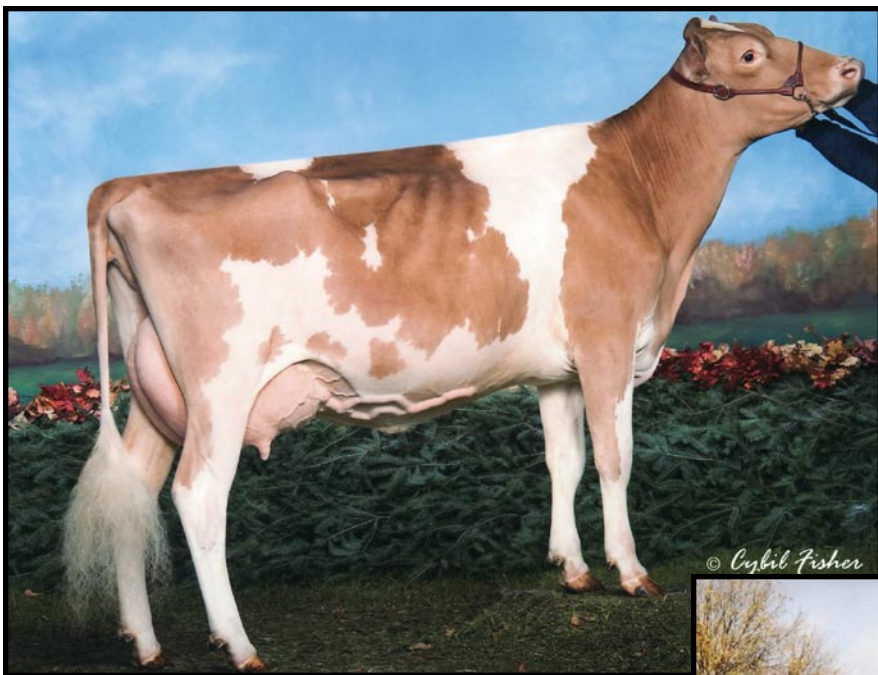
FOUR WINDS ROYAL DELUXE-ET USA000000604608

AGA 04/10 PTAT -0.5 -0.2UDC +0.0FLC 66%Rel

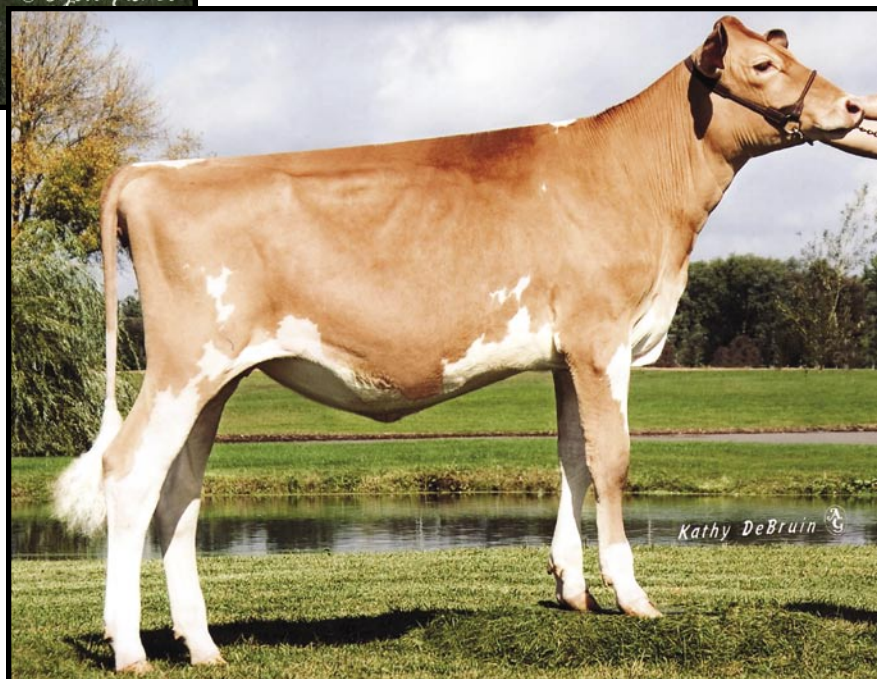
CALLUMLEA MAGICMAN JUSTINE USA000003071790

04/10 USDA PTA +436M -0.15% -8F -0.09% -2P
-0.4DPR -1.4PL -137NM\$ 11NM%ile -198CM\$ 65% Rel
1 Rec YDev: +3847M +64F +36P
1 App 04/10 PTAT +0.1 -0.6UDR +1.3FLC 59%Rel CPI -8
Appraisal: 89 @ 2-07
2-05 365D 2X 28240M 3.9% 1088F 2.7% 776P DHIA
ALL-AMERICAN FALL YEARLING 2001
RES. JR CHAMPION NGS-MADISON 2001
JR. CHAMPION NJS-LOUISVILLE 2001

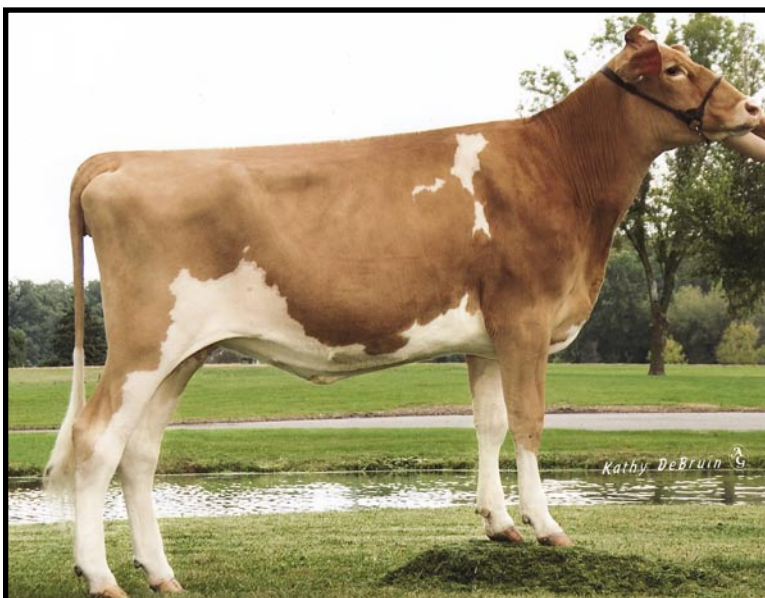
LAND OF LIVING D JUSTINTIME-ET 83 @ 4-00 (82/78)
2-05 305D 2X 17600M 3.9% 682F 3.4% 600P DHIA
LAND OF LIVING D JILLIAN-ET 77 @ 2-11 (74/81)
2-03 305D 2X 20010M 3.5% 694F 3.3% 666P DHIA
LAND OF LIVING P JIFFY-ET 87 @ 2-10 (88/87)
2-03 305D 2X 18520M 4.1% 767F 3.2% 592P DHIA
LAND OF LIVING P J JAMIE-ET 86 @ 2-10 (84/87)
2-03 305D 2X 17920M 4.3% 779F 3.4% 602P DHIA
LAND OF LIVING P J JELLY-ET 77 @ 2-10 (72/83)
2-03 318D 2X 21750M 3.6% 792F 3.0% 646P DHIA
LAND OF LIVING P J JABBER-ET 84 @ 2-09 (83/84)
LAND OF LIVING P JACKIE-ET 84 @ 2-09 (84/79)
LAND OF LIVING P JEEPERS-ET 78 @ 2-09 (75/80)
2-02 305D 2X 16660M 4.2% 705F 3.4% 568P DHIA
LAND OF LIVING P JEANETTE-ET 77 @ 2-09 (74/87)
2-03 305D 2X 17810M 3.1% 553F 2.9% 519P DHIA
LAND OF LIVING P JODEY-ET 78 @ 2-09 (75/84)
2-02 305D 2X 16170M 3.9% 632F 3.6% 577P DHIA
LAND OF LIVING P JULEP-ET 86 @ 2-10 (85/81)
2-05 305D 2X 22320M 4.0% 896F 3.2% 708P DHIA
RES. ALL-AMERICAN 2007 & 2008
LAND OF LIVING P J JAM-ET 88 @ 2-10 (86/91)
2-03 305D 2X 20610M 4.2% 865F 3.3% 676P DHIA
3RD SR. 2-YEAR-OLD NGS-MADISON 2009
LAND OF LIVING D JUBILEE-ET
ALL-AMERICAN 2006 & 2007
JR CHAMPION NGS-HARRISBURG 2006



Land of Living P Jam-ET
3rd Sr. 2-Year-Old NGS-Madison 2009
Maternal Sister to Dam of of Lot 38



Land of Living P Julep-ET
Res. All-American Winter Calf & Yearling
Maternal Sister to Dam of of Lot 38



Land of Living D Justintime-ET
8th Fall Yearling NGS-Madison 2007
Full Sister to Dam of of Lot 38



Land of Living D Jubilee-ET
All-American Fall Calf & Fall Yearling 2006 & 2007
Full Sister to Dam of of Lot 38