



Misty Meadows Franks Luscious EX-92

4-10 365D 27,940M 4.3% 1,213F 3.4% 951P
Maternal Sister to Granddam of Lot 01

LOT 01 MISTY MEADOWS BEAUTIFUL FLAME-ETUSA000068025078

Born: 06-25-2008 Tattoo LE P27 RE P27
Breeder: PETERSON JAKE & JACLYN
WILSON WI
Owner: PIEPER LENNY & ANGIE
ETERNAL FLAME
139 CONKLIN RD
WALTON NY 13856

PA: +439M -0.01% +18F +0.01% +15P +32CM\$ +30NM\$
+0.4PTAT -0.1UDC +0.1FLC -0.4DPR -0.8PL +47PTI
ST SR BD DF RA TW RV RL FA
+1.8 +0.3 +0.5 +0.4 L0.1 +0.6 H0.2 P0.3 L0.2
FU RH RW UC UD TP TL
+0.2 +0.7 +0.0 -1.3 S0.3 W0.1 -1.7

CHUPPS FARM BOSSMAN MONEY-ET USA000000604440

01/09 USDA PTA -432M +0.04% -12F +0.05% -6P
+0.2DPR -1.7PL -145NM\$ 0NM%ile -129CM\$ 61% Rel
AGA 01/09 PTAT +0.1 +0.0UDC -0.2FLC 64%Rel PTI -39
ST SR BD DF RA TW RV RL FA
+1.6 +0.6 +0.1 -0.9 H0.5 +0.6 S0.2 S0.3 0.0
FU RH RW UC UD TP TL
+0.8 +0.0 -0.8 -1.6 S1.3 W0.5 -1.6

MISTY MEADOWS BEAUTYS BLOSSOM USA000003068357

01/09 USDA PTA +1309M -0.06% +47F -0.04% +35P
-1.0DPR +0.2PL +204NM\$ 85NM%ile +192CM\$ 56% Rel
4 Rec YDev: +3299M +122F +92P
6 App 01/09 PTAT +0.7 -0.1UDC +0.4FLC 58%Rel CPI +132
Appraisal: 91 @ 5-08 (91/86) Gold Star Dam - 2006
ST SR BD DF RA TW RV RL FA FU RH RW UC UD TP TL
38 36 48 48 15 45 40 20 18 40 34 18 20 22 37 30
2-02 305D 3X 18260M 4.2% 770F 2.9% 529P 85
3-05 365D 3X 29030M 4.6% 1345F 3.1% 898P DHIA
4-11 365D 3X 31710M 4.5% 1430F 3.3% 1034P DHIA
6-02 365D 3X 33890M 4.1% 1405F 3.3% 1106P DHIA
2169D 158,022M 4.6% 7,238F 3.3% 5,257P LIFE
HM JR ALL-AMERICAN 4-YEAR-OLD 2004
RES JR ALL-AMERICAN JR 3-YR-OLD 2003
2nd 4-YEAR-OLD NJS-MADISON 2004
2nd JR 3-YR-OLD NJS-MADISON 2003
4th JR 2-YR-OLD NJS - LOUISVILLE 2002



Misty Meadows Beautys Blossom EX-91

6-02 365D 33,890M 4.1% 1,405F 3.3% 1,106P
Dam of Lot 01

SELLING OPEN

MARFRED BOSSMAN-ET USA000000601056 7GU306

01/09 USDA PTA -188M +0.01% -7F +0.00% -6P
-0.1DPR +0.7PL -42NM\$ 9NM%ile -42CM\$ 96% Rel
AGA 01/09 PTAT +0.7 +0.8UDC -0.1FLC 96%Rel PTI -4

MOORMEIER FARMS BIONIC MOLLY USA000002995624

01/09 USDA PTA -420M +0.00% -19F +0.01% -12P
-0.7DPR -3.0PL -204NM\$ 1NM%ile -202CM\$ 58% Rel
Appraisal: 92 @ 6-10
5-10 298D 2X 15910M 3.9% 617F 3.3% 531P DHIR

TROTACRE JAY MR LUXURY-ET USA000000602751 7GU339

01/09 USDA PTA +989M -0.11% +24F -0.03% +26P
+0.9DPR +1.5PL +200NM\$ 72NM%ile +191CM\$ 97% Rel
AGA 01/09 PTAT +1.2 +0.5UDC +0.8FLC 96%Rel PTI +111

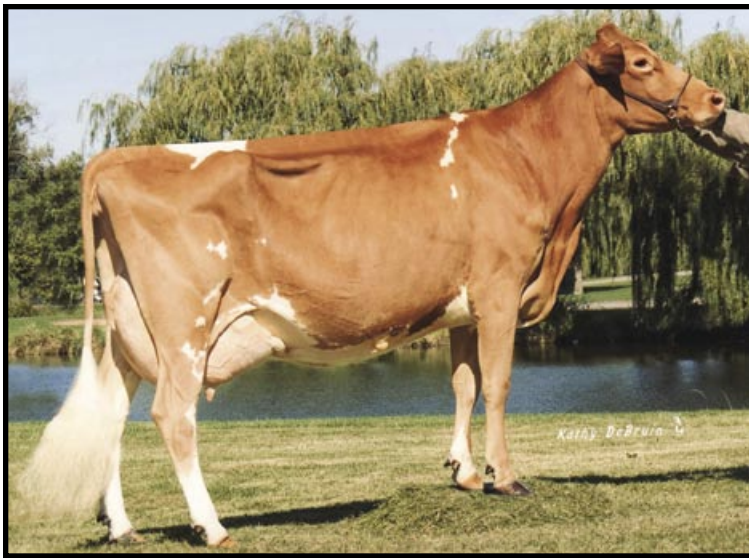
MISTY MEADOWS TRUMPETS BEAUTY USA000003054881

01/09 USDA PTA +696M +0.02% +34F -0.03% +18P
-2.4DPR -2.5PL -31NM\$ 21NM%ile -38CM\$ 61% Rel
4 Rec YDev: +1872M +103F +53P
4 App 01/09 PTAT -0.5 -1.1UDC -0.7FLC 60%Rel CPI +29
Appraisal: 83 @ 5-05 (81/80)
2-03 314D 3X 22120M 4.6% 1027F 3.1% 691P 87
3-03 365D 3X 27180M 4.8% 1294F 3.2% 876P DHIA
4-09 365D 2X 26040M 5.0% 1294F 3.2% 830P DHIA
6-03 365D 3X 28870M 4.7% 1360F 3.1% 891P DHIA
2218D 147,070M 5.0% 7,337F 3.3% 4,917P LIFE

MISTY MEADOWS PERFECTO BABY 90 @ 5-02 (89/87)
3-03 365D 3X 27799M 4.3% 1195F 3.1% 870P DHIA

3RD DAM: DA MAR FAYETTE LADDY LENA USA000002925397

Appraisal: 91 @ 11-05
9-05 365D 2X 15000M 4.9% 739F 3.7% 561P DHIA
GRAND CHAMPION MN STATE FAIR 1992
1ST AGED COW MN STATE FAIR 1997
HER DTR: MISTY MEADOWS FRANKS LUSCIOUS 92 @ 4-11
4-10 365D 3X 27940M 4.3% 1213F 3.4% 951P DHIA
NOM JR ALL-AMERICAN 4-YEAR-OLD 1997
RES GRAND CHAMPION MINNESOTA STATE FAIR 1997



Misty Meadows Neon Libby EX-90

3-07 365D 26,650M 4.0% 1,059F 3.1% 835P
Res. AA Produce of Dam w/ Lucy 2007
Maternal Family Member of Lot 01



Misty Meadows SG Nitro Lucy-ET EX-91

4-00 320D 15,010M 5.5% 827F 3.2% 476P
Res. AA Produce of Dam w/ Libby 2007
Maternal Family Member of Lot 01