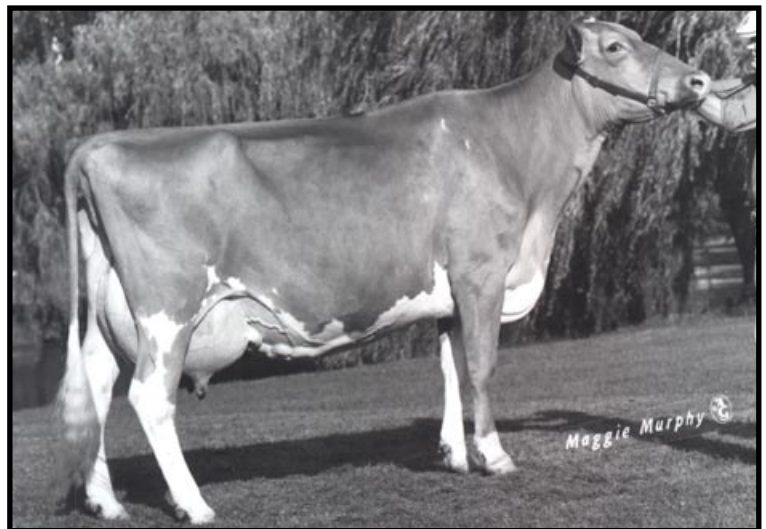




Four Winds Adm B Silk EX-93
 3X HM All-American in Milking Form
 Maternal Family Member of Lots 23



Four Winds BT Blossom EX-93
 Dam of Four Winds Magicman
 3rd Dam of Lot 23

LOT 23 FRIENDSHIP CHUPP MARQUIS CALY USA000068024057

Born: 10-01-2008 Tattoo LE C592 RE C592
 Breeder & Owner: FRIENDSHIP FARM & CHUPPS GUERNSEY FARM
 560 VERBANK RD
 MILLBROOK NY 12545
 918-630-0495

SELLING OPEN

FALL CALF

PA: -223M +0.05% -2F +0.02% -6P +17CM\$ +14NM\$
 +0.6PTAT +0.9UDC +0.6FLC +0.0DPR +0.9PL +18PTI
 ST SR BD DF RA TW RV RL FA
 +0.8 +0.3 -0.2 -1.0 H0.9 +0.5 S0.1 P0.3 S0.6
 FU RH RW UC UD TP TL
 +1.8 +0.7 -0.4 -0.1 S2.3 C0.7 -0.9

VILLA CREST FAME MARQUIS USA000068002955

PA: -154M +0.04% +0F +0.01% -5P +60CM\$ +60NM\$
 +0.9PTAT +1.0UDC +0.6FLC +0.8DPR +1.1PL +33PTI
 ST SR BD DF RA TW RV RL FA
 +1.7 +0.2 -0.1 -0.2 H0.7 +0.4 S0.1 P0.3 S0.6
 FU RH RW UC UD TP TL
 +1.2 +1.1 +0.1 +0.9 S2.3 C0.7 +0.0

FOUR WINDS B CHARMER-TW USA000003060412

04/09 USDA PTA -291M +0.06% -3F +0.02% -6P
 -0.8DPR +0.6PL -32NM\$ 21NM%ile -26CM\$ 57% Rel
 5 Rec YDev: -241M +7F +1P
 3 App 04/09 PTAT +0.3 +0.7UDC +0.6FLC 52%Rel CPI +5
 Appraisal: 88 @ 5-01 (88/85)
 ST SR BD DF RA TW RL FA FU RH RW UC UD TP TL
 33 29 27 36 17 32 20 26 41 35 30 19 22 20 32
 2-02 305D 2X 12410M 4.1% 503F 3.2% 403P DHIA
 3-07 364D 2X 17480M 5.3% 928F 3.4% 587P 95
 5-01 345D 2X 18800M 4.9% 921F 3.2% 597P 21
 6-04 305D 2X 19570M 4.4% 853F 3.2% 632P 93
 7-10 305D 2X 16740M 4.2% 702F 3.1% 525P 94
 2087D 105,050M 4.7% 4,899F 3.3% 3,472P LIFE
 2ND JR. 2-YEAR-OLD IL STATE FAIR 2001

FRIENDALE PERFECT CHARM 83 @ 4-04 (83/83)
 3-06 305D 2X 16150M 4.6% 735F 3.4% 555P 91
 FRIENDSHIP D CHARDENAY-TW 78 @ 2-05 (78/86)

3RD DAM: FOUR WINDS B T BLOSSOM USA000002899922

Appraisal: 93 @ 8-09
 5-11 365D 2X 22780M 4.2% 967F 3.4% 780P DHIA
 7-02 365D 2X 24710M 4.3% 1060F 3.6% 878P DHIA
 2034D 100,980M 4.5% 4,548F 3.7% 3,781P LIFE
 RES. ALL-AMERICAN AGED COW 1991
 HM ALL-AMERICAN 4-YEAR-OLD 1989
 DAM OF: FOUR WINDS MAGICMAN-ET PTI +39

VILLA CREST P FAME USA000000604077

04/09 USDA PTA -22M -0.02% -4F -0.02% -4P
 -1.2DPR -2.6PL -113NM\$ 0NM%ile -120CM\$ 64% Rel
 AGA 04/09 PTAT +1.2 +0.9UDC +0.8FLC 69%Rel PTI +14

MAR RAL GOLIATH MODEL-ET USA000003064944

04/09 USDA PTA -285M +0.10% +4F +0.04% -6P
 +2.8DPR +4.8PL +233NM\$ 89NM%ile +240CM\$ 60% Rel
 1 App 04/09 PTAT +0.5 +1.1UDC +0.4FLC 51%Rel CPI +50
 Appraisal: 91 @ 8-01 (90/86)
 5-10 365D 2X 29960M 4.8% 1444F 3.3% 990P DHIA

MARFRED BOSSMAN-ET USA000000601056 7GU306

04/09 USDA PTA -182M +0.01% -6F +0.00% -6P
 +0.1DPR +0.8PL -33NM\$ 8NM%ile -34CM\$ 96% Rel
 AGA 04/09 PTAT +0.7 +0.8UDC -0.1FLC 96%Rel PTI -2

FOUR WINDS OK BLOSSOM-ET USA000003040107

04/09 USDA PTA -821M +0.14% -14F +0.05% -19P
 -1.4DPR -2.2PL -207NM\$ 1NM%ile -193CM\$ 55% Rel
 3 Rec YDev: -2285M -32F -47P
 3 App 04/09 PTAT +0.4 +0.4UDC +1.0FLC 54%Rel CPI -35
 Appraisal: 91 @ 4-09
 2-01 365D 2X 17920M 4.6% 832F 3.5% 627P DHIA
 3-03 305D 2X 17330M 4.6% 802F 3.4% 590P DHIA

FOUR WINDS BOSSMAN CRYSTAL 86 @ 2-08
 HM ALL-AMERICAN WINTER CALF 1998

4TH DAM: BUTENSCHOENS P W CHERRY USA000002706399

Appraisal: 91 @ 9-09
 1ST AGED COW NGS-LOUISVILLE 1981
 RES GRAND CHAMPION NJS-LOUISVILLE 1981