

LOT 12 HERSHYS LUCAS LAURA LACI USA000068024496

Born: 12-05-2008

SELLING OPEN

Breeder & Owner: HERSHBERGER JONATHAN

5481 TR 360
MILLERSBURG OH 44654
330-893-3299

PA: +668M -0.05% +21F -0.01% +20P +107CM\$ +108NM\$
+0.2PTAT +0.0UDC +0.3FLC -0.5DPR -0.4PL +72PTI
ST SR BD DF RA TW RV RL FA
+1.1 +0.8 +1.1 +1.1 L1.4 +0.6 H0.6 P0.4 L0.3
FU RH RW UC UD TP TL
-0.2 +1.0 +1.5 +0.0 D1.0 C0.5 -0.1

FLAMBEAU MANOR OPTION LUCAS-ET USA000000604823 7GU399

01/09 USDA PTA +983M -0.02% +39F +0.02% +35P
-2.6DPR -2.4PL +115NM\$ 45NM%ile +125CM\$ 77% Rel
AGA 01/09 PTAT +0.6 +0.0UDC +0.9FLC 73%Rel PTI +122
ST SR BD DF RA TW RV RL FA
+2.0 +0.5 +1.0 +2.3 L3.7 +0.9 H1.5 P0.6 L0.5
FU RH RW UC UD TP TL
-0.3 +1.7 +2.3 -0.3 D1.1 C0.4 -0.2

HERSHYS LEGACY LAURA CINDY USA000068008699

01/09 USDA PTA +353M -0.08% +2F -0.04% +5P
+1.6DPR +1.7PL +101NM\$ 60NM%ile +88CM\$ 46% Rel
1 Rec YDev: -412M -48F -26P
1 App 01/09 PTAT -0.2 +0.0UDC -0.3FLC 46%Rel CPI +20
Appraisal: 72 @ 2-06 (72/70)
ST SR BD DF RA TW RV RL FA FU RH RW UC UD TP TL
23 34 34 18 13 23 10 32 26 32 32 24 34 24 20 24
2-02 312D 2X 12130M 4.7% 567F 3.4% 409P DHIA

LOT 13 HERSHYS TRACER CHLOE KUSTARD USA000068024495

Born: 10-09-2008

SELLING OPEN

Breeder & Owner: HERSHBERGER JONATHAN

5481 TR 360
MILLERSBURG OH 44654
330-893-3299

PA: +324M +0.02% +17F -0.04% +5P -7CM\$ +5NM\$
+1.5PTAT +1.1UDC +0.6FLC -2.0DPR -0.4PL +68PTI
ST SR BD DF RA TW RV RL FA
+1.5 +1.3 +1.9 +1.2 H0.3 +1.5 H0.4 S0.2 S0.4
FU RH RW UC UD TP TL
+1.1 +1.4 +1.6 +1.7 S0.4 C2.1 +0.6

LANTZ FARM SHARP TRACER-ET USA000003081085

PA: +307M +0.02% +17F -0.04% +4P +53CM\$ +65NM\$
+1.3PTAT +1.4UDC -0.4FLC -1.7DPR +0.9PL +59PTI
ST SR BD DF RA TW RV RL FA
+0.3 +0.7 +1.0 +0.8 H0.6 +0.5 S0.4 S0.6 S0.1
FU RH RW UC UD TP TL
+1.6 +1.4 +1.4 +2.0 S1.3 C2.2 -0.2

HERSHYS FF CHLOE CINDY USA000068002599

01/09 USDA PTA +340M +0.01% +16F -0.03% +6P
-2.2DPR -1.7PL -56NM\$ 16NM%ile -66CM\$ 47% Rel
1 Rec YDev: +619M +24F +22P
1 App 01/09 PTAT +1.6 +0.7UDC +1.6FLC 48%Rel CPI +73
Appraisal: 81 @ 2-09 (79/84)
ST SR BD DF RA TW RV RL FA FU RH RW UC UD TP TL
31 18 34 34 32 28 35 27 36 21 28 26 31 31 38 33
2-04 365D 2X 15270M 4.8% 739F 3.4% 519P 95

HERSHYS SPIDER CHLOE SWEETI

ALL-AMERICAN WINTER CALF 2007

UNANIMOUS ALL-AMERICAN WINTER YEARLING 2008

JENSGOLDEN BIONIC OPTION USA000000602643 14GU273

01/09 USDA PTA +27M +0.11% +20F +0.01% +2P
-3.3DPR -4.9PL -149NM\$ 0NM%ile -147CM\$ 94% Rel
AGA 01/09 PTAT +0.4 +0.1UDC +1.1FLC 93%Rel PTI +25

FLAMBEAU MANOR HUNTER LARISSA USA000003050055

01/09 USDA PTA +780M -0.01% +33F +0.07% +37P
-0.8DPR -0.3PL +165NM\$ 77NM%ile +194CM\$ 66% Rel
3 App 01/09 PTAT +0.4 +0.2UDC -0.7FLC 63%Rel CPI +98
Appraisal: 90 @ 4-09 Gold Star Dam - 2002
5-09 365D 2X 29796M 4.0% 1186F 3.5% 1037P DHIA

NEDROW FARMS GOLIATH LEGACY-TW USA603476 14GU282

01/09 USDA PTA +867M -0.13% +15F -0.04% +21P
+3.5DPR +4.5PL +334NM\$ 95NM%ile +321CM\$ 92% Rel
AGA 01/09 PTAT +0.6 +0.3UDC -0.3FLC 87%Rel PTI +91

FELLER FARMS LORRY CINDY USA000003067344

01/09 USDA PTA +114M -0.02% +2F -0.04% -2P
+0.0DPR -0.9PL -54NM\$ 16NM%ile -66CM\$ 59% Rel
5 Rec YDev: +267M +6F +2P
3 App 01/09 PTAT +0.0 -0.3UDC +0.0FLC 59%Rel CPI -3
Appraisal: 80 @ 4-08 (78/86)
2-02 278D 2X 11700M 4.6% 537F 3.2% 377P DHIA
3-01 345D 2X 16400M 4.6% 759F 3.5% 568P 98
4-02 303D 2X 15660M 4.8% 753F 3.7% 577P 94
5-02 365D 2X 19120M 5.0% 947F 3.5% 671P 94
FELLER FARMS VILTER CRACKER 76 @ 5-04 (74/67)
3-04 365D 2X 19900M 5.1% 1006F 3.5% 706P 92
HERSHYS FF CHLOE CINDY 81 @ 2-09 (79/84)
2-04 365D 2X 15270M 4.8% 739F 3.4% 519P 95

TAG LANE IDEAL SHARP-ET USA000000601474 1GU201

01/09 USDA PTA +197M -0.02% +6F -0.03% +2P
-2.8DPR -0.8PL -76NM\$ 4NM%ile -85CM\$ 97% Rel
AGA 01/09 PTAT +1.5 +1.1UDC -1.0FLC 97%Rel PTI +16

BREEZY POINT P RACER USA000003025568

01/09 USDA PTA +417M +0.05% +27F -0.04% +6P
-0.5DPR +2.5PL +206NM\$ 85NM%ile +191CM\$ 72% Rel
3 App 01/09 PTAT +1.0 +1.6UDC +0.3FLC 68%Rel CPI +100
Appraisal: 93 @ 7-03 Gold Star Dam - 2001
6-06 365D 3X 46154M* 4.7% 2175F* 3.1% 1408P* DHIA

TROTACRE LORAL TILLER-ET USA000000603341 7GU360

01/09 USDA PTA +573M +0.03% +31F -0.04% +11P
-3.8DPR -3.6PL -94NM\$ 4NM%ile -108CM\$ 98% Rel
AGA 01/09 PTAT +2.7 +1.0UDC +1.9FLC 97%Rel PTI +111

FELLER FARMS LORRY CINDY USA000003067344

01/09 USDA PTA +114M -0.02% +2F -0.04% -2P
+0.0DPR -0.9PL -54NM\$ 16NM%ile -66CM\$ 59% Rel
5 Rec YDev: +267M +6F +2P
3 App 01/09 PTAT +0.0 -0.3UDC +0.0FLC 59%Rel CPI -3
Appraisal: 80 @ 4-08 (78/86)
2-02 278D 2X 11700M 4.6% 537F 3.2% 377P DHIA
3-01 345D 2X 16400M 4.6% 759F 3.5% 568P 98
4-02 303D 2X 15660M 4.8% 753F 3.7% 577P 94
5-02 365D 2X 19120M 5.0% 947F 3.5% 671P 94
FELLER FARMS VILTER CRACKER 76 @ 5-04 (74/67)
3-04 365D 2X 19900M 5.1% 1006F 3.5% 706P 92
HERSHYS LEGACY LAURA CINDY 72 @ 2-06 (72/70)
2-02 312D 2X 12130M 4.7% 567F 3.4% 409P DHIA

LOT 14 KNAPPS ALTANIC KARISA**USA000068024661**

Born: 09-01-2008 Tattoo LE K624 RE K624
 Breeder & Owner: KNAPP D RANDY & FAMILY
 22257 PILOT GROVE RD
 EPWORTH IA 52045-9610
 563-876-3834

SELLING OPEN
 JOHNES VACCINATE

PA: +326M +0.08% +28F -0.04% +4P +72CM\$ +84NM\$
 +1.6PTAT +0.8UDC +1.0FLC -1.5DPR +0.6PL +89PTI
 ST SR BD DF RA TW RV RL FA
 +0.9 +0.9 +0.8 +1.0 H1.1 +1.2 H0.6 P0.2 S0.6
 FU RH RW UC UD TP TL
 +1.6 +1.3 +1.1 +0.7 S1.0 C0.8 -0.2

SNIDERS TILLER ALTANIC USA000068003602 7GU417

PA: +751M +0.06% +44F -0.06% +15P +102CM\$ +120NM\$
 +2.2PTAT +1.0UDC +1.3FLC -1.5DPR -0.4PL +137PTI
 ST SR BD DF RA TW RV RL FA
 +1.1 +1.2 +1.1 +1.7 H1.8 +1.9 H0.6 S0.2 S0.9
 FU RH RW UC UD TP TL
 +2.2 +2.0 +2.1 +0.7 S0.7 C1.2 +0.3

KNAPPS JESUS KARESS USA000068016895

PA: -100M +0.10% +11F -0.02% -7P +41CM\$ +48NM\$
 +1.0PTAT +0.6UDC +0.7FLC -1.5DPR +1.5PL +39PTI
 ST SR BD DF RA TW RV RL FA
 +0.6 +0.5 +0.5 +0.3 H0.4 +0.4 H0.5 P0.5 S0.2
 FU RH RW UC UD TP TL
 +0.9 +0.6 +0.1 +0.6 S1.3 C0.4 -0.6

3RD DAM: KNAPPS SHARP KARRESS USA000003070875

Appraisal: 91 @ 3-02 (92/90)
 6-07 306D 2X 17800M 4.5% 803F 3.2% 574P 97

4TH DAM: SPRING FLO HENRY'S KARISSA USA000003037401

3-03 358D 2X 22760M 4.1% 932F 3.3% 756P DHIA

TROTACRE LORAL TILLER-ET USA000000603341 7GU360

01/09 USDA PTA +573M +0.03% +31F -0.04% +11P
 -3.8DPR -3.6PL -94NM\$ 4NM%ile -108CM\$ 98% Rel
 AGA 01/09 PTAT +2.7 +1.0UDC +1.9FLC 97%Rel PTI +111

CEDAR FRINGED ALTANN USA000003045188

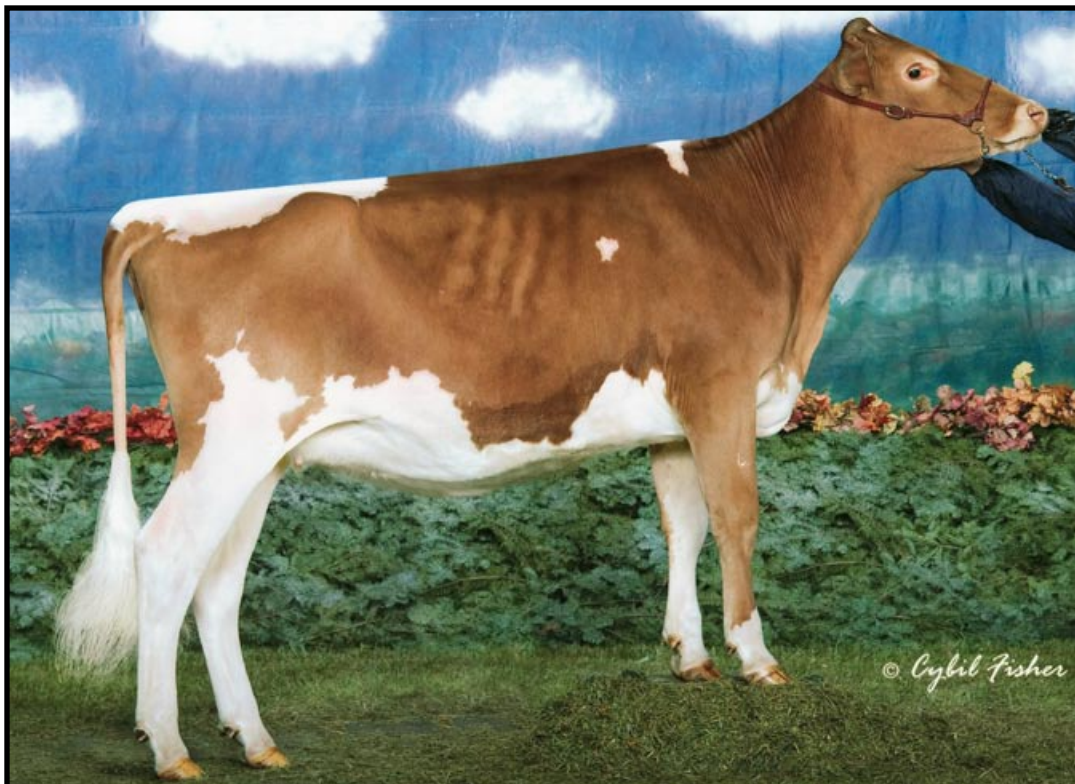
01/09 USDA PTA +928M +0.09% +57F -0.07% +18P
 +0.9DPR +2.8PL +334NM\$ 97NM%ile +311CM\$ 80% Rel
 4 Rec YDev: +2540M +145F +59P
 5 App 01/09 PTAT +1.7 +1.0UDC +0.7FLC 79%Rel CPI +162
 Appraisal: 95 @ 6-11 (95/93) Gold Star Dam - 2001
 6-04 365D 2X 31150M 4.8% 1486F 3.0% 941P 94

KNAPPS ROYAL OAK JESUS USA000000604393 107GU293

01/09 USDA PTA -680M +0.25% +10F +0.04% -15P
 -1.7DPR +2.5PL +35NM\$ 31NM%ile +48CM\$ 75% Rel
 AGA 01/09 PTAT +1.1 +0.8UDC +1.0FLC 74%Rel PTI +35

KNAPPS MR AMERICA KAREN USA000003079942

01/09 USDA PTA +481M -0.05% +12F -0.08% +2P
 -1.2DPR +0.5PL +61NM\$ 47NM%ile +33CM\$ 53% Rel
 3 Rec YDev: +1194M +28F +8P
 3 App 01/09 PTAT +0.8 +0.4UDC +0.4FLC 51%Rel CPI +43
 Appraisal: 86 @ 4-10 (84/85)
 2-03 365D 2X 26730M 4.5% 1200F 3.1% 835P DHIA
 3-07 305D 2X 22020M 4.4% 959F 3.1% 678P 95

**Hershys Spider Chloe Sweeti**

All-American Winter Calf 2007

All-American Winter Yearling 2008

Maternal Sister to Lot 13 ~ Maternal Family Member of Lot 12