

DAIRYMAN HILLPOINT SILV PHOEBE-ETUSA000068019847

Born: 09-14-2007 Tattoo LE HR57
Breeder: HOARDS DAIRYMAN FARM
FORT ATKINSON WI
Owner: HILLPOINT PARTNERS
CROSS PLAINS WI

SELLING OPEN

PA: -12M +0.16% +26F +0.02% +3P +34CM\$ +27NM\$
PTAT +1.7 PTI +85
ST SR BD DF RA TW RL FA
+2.0 +1.5 +1.4 +1.3 L0.3 +1.6 P0.1 S0.3
FU RH RW UC UD TP TL
+0.9 +1.9 +1.9 +0.1 S0.2 C1.0 +0.6

COULEE CREST R O SILVERADO-ET USA604520 200GU110

08/08 USDA PTA +1M +0.15% +26F -25NM\$ 9NM%ile
+0.01% +2P -21CM\$ 88% Rel
AGA 08/08 PTAT +2.5 72% Rel PTI +119
ST SR BD DF RA TW RL FA
+3.4 +2.6 +2.7 +2.2 L0.5 +2.6 P0.8 S0.8
FU RH RW UC UD TP TL
+1.2 +2.7 +2.8 +1.1 S0.1 C1.2 +2.5

MARFRED ENTICER PHOEM USA000003058326

08/08 USDA PTA -24M +0.16% +25F +79NM\$ 55NM%ile
+0.03% +4P +89CM\$ 60% Rel
5 Rec YDev: -361M +57F +7P
3 App 08/08 PTAT +0.8 57% Rel CPI +48
Appraisal: 90 @ 4-10 (91/86)
2-00 294D 2X 15270M 5.1% 784F 3.7% 558P DHIA
3-00 304D 2X 18620M 5.4% 1011F 3.6% 670P DHIA
4-00 332D 2X 15400M 5.5% 849F 3.8% 590P 65
5-02 365D 2X 16650M 6.0% 1001F 3.5% 579P DHIA
6-09 365D 2X 13440M 5.5% 734F 3.7% 491P DHIA
MARFRED DAIRYMAN REGIS PATRICK @ DAIRYBELT SIRES
MARFRED VALIANT PHIONA 86 @ 6-05 (81/88)
4-04 352D 2X 33130M 4.3% 1438F 3.0% 1009P 95
DAIRYMAN STORM PHANCY-ET 86 @ 3-00 (84/87)
2-03 330D 2X 19130M 5.1% 980F 3.5% 669P 95
MARFRED STORMS PHRANCE 90 @ 5-03 (87/88)
3-10 365D 2X 26470M 4.7% 1255F 3.1% 825P DHIA
NOM. ALL-AMERICAN SR. 2-YEAR-OLD 2003

JENSGOLDEN PROKING ROYAL OAK USA602216 7GU330

08/08 USDA PTA +487M +0.08% +35F +64NM\$ 22NM%ile
+0.00% +17P +67CM\$ 96% Rel
AGA 08/08 PTAT +2.2 95% Rel PTI +135

COULEE CREST LORRY SARAH USA000003062140

08/08 USDA PTA +1383M +0.04% +69F +205NM\$ 87NM%ile
-0.06% +35P +189CM\$ 66% Rel
1 App 08/08 PTAT +1.8 62% Rel CPI +182
Appraisal: 87 @ 3-00
2-03 365D 2X 29177M 5.2% 1508F* 3.2% 920P 95

MARFRED ENTICER USA000000603028

08/08 USDA PTA +257M +0.02% +14F -70NM\$ 4NM%ile
-0.03% +3P -81CM\$ 56% Rel
AGA 08/08 PTAT +0.4 65% Rel PTI +1

MARFRED SMOKIN GUN PHOEBE USA000003047175

08/08 USDA PTA -455M +0.09% -5F +19NM\$ 36NM%ile
+0.04% -8P +32CM\$ 57% Rel
5 Rec YDev: -1119M -12F -14P
3 App 08/08 PTAT +0.5 53% Rel CPI +3
Appraisal: 86 @ 7-01 (86/85)
2-02 352D 2X 14790M 4.7% 693F 3.7% 543P DHIA
3-03 292D 2X 12770M 4.9% 620F 3.8% 489P DHIA
4-02 305D 2X 16010M 4.9% 782F 3.7% 597P DHIA
6-00 305D 2X 14590M 4.9% 713F 3.5% 509P 42
7-09 305D 2X 13610M 5.0% 677F 3.5% 482P 94

3RD DAM: MARFRED PERFECTO PRALINE USA3016176

Appraisal: 80 @ 4-02
2-06 365D 2X 16620M 4.6% 764F 3.3% 544P DHIA

4TH DAM: MARFRED IDEAL PRIZE USA000002982323

Appraisal: 83 @ 4-02
2-11 365D 2X 18620M 5.0% 932F 3.8% 700P DHIA

5TH DAM: MARFRED ARCHITECT PRIMROSE USA002943266

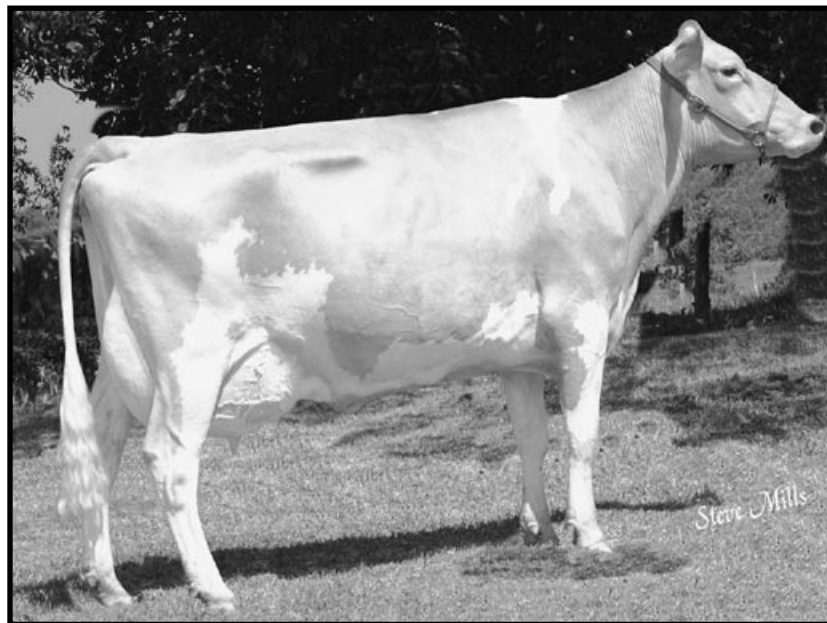
Appraisal: 81 @ 5-00

6TH DAM: MARFRED KA PRIMROSE USA000002879800

Appraisal: 92 @ 5-02
3-04 365D 2X 21420M 5.8% 1239F* 3.3% 702P DHIA



Marfred Storm Phrance EX-90
Nom. All-American Sr. 2-Year-Old 2003
Maternal Sister



Marfred Enticer Phoem EX-90
3-00 304D 18,620M 5.4% 1,011F 3.6% 670P
Dam