

# MISTY MEADOWS HILLPOINT P POPPY-ETUSA000068019853

Born: 12-01-2007 Tattoo LE HR83  
Breeder: PETERSON JAKE & JACLYN  
WILSON WI 54027  
Owner: HILLPOINT PARTNERS  
CROSS PLAINS WI

SELLING OPEN

PA: +40M +0.03% +6F -0.01% +0P +66CM\$ +69NM\$  
PTAT +1.5 PTI +74  
ST SR BD DF RA TW RL FA  
+1.9 +0.9 +1.1 +1.4 H0.8 +0.6 P0.3 S0.9  
FU RH RW UC UD TP TL  
+1.1 +1.0 +1.0 +1.1 S1.3 C1.3 +0.2

## LILY LANE PENNY PERFECTO-ET USA00000598133 1GU296

08/08 USDA PTA -204M -0.05% -17F +90NM\$ 36NM%ile  
+0.02% -4P +95CM\$ 99% Rel  
AGA 08/08 PTAT +1.1 99% Rel PTI +40  
ST SR BD DF RA TW RL FA  
+1.4 +0.6 +0.6 +0.6 H0.8 -0.6 0.0 S1.0  
FU RH RW UC UD TP TL  
+1.0 +0.2 -0.2 +0.9 S1.8 0.0 +0.6

## MISTY MEADOWS TILLER PATIENCE USA000068000203

08/08 USDA PTA +283M +0.10% +29F +47NM\$ 45NM%ile  
-0.03% +4P +37CM\$ 50% Rel  
2 Rec YDev: +1388M +115F +34P  
3 App 08/08 PTAT +1.8 54% Rel CPI +104  
Appraisal: 90 @ 4-06 (90/85)  
2-04 365D 3X 26447M 4.7% 1247F 3.2% 838P 87  
*NOM. JR. ALL-AMERICAN SR. 2-YEAR-OLD 2006*  
*4TH SR. 3-YEAR-OLD NJS-MADISON 2007*

## 3RD DAM: MISTY MEADOWS DMTF PRECIOUS USA3018581

Appraisal: 87 @ 6-00  
7-03 313D 3X 18930M 4.3% 817F 3.0% 569P 87  
3185D 135,970M 4.4% 5,975F 3.3% 4,517P LIFE

## 4TH DAM: MISTY MEADOWS PREMIERS VANESSA USA2896429

Appraisal: 86 @ 4-09  
4-03 293D 2X 16170M 4.7% 755F 3.7% 595P DHIR

## 5TH DAM: BUTENSCHOENS C LILLY USA000002658882

Appraisal: 90 @ 12-02

## DUTCH MILL TELESTARS FAYETTE USA591871 21GU247

08/08 USDA PTA -716M -0.01% -34F -258NM\$ 0NM%ile  
+0.01% -22P -258CM\$ 99% Rel  
AGA 08/08 PTAT +0.7 99% Rel PTI -65

## SAWAGA CHOICE PENNY USA000002758141

08/08 USDA PTA +241M -0.12% -9F +60NM\$ 49NM%ile  
-0.04% +1P +46CM\$ 72% Rel  
Appraisal: 90 @ 4-08 Gold Star Dam - 1991  
6-07 305D 2X 22070M 3.8% 829F 3.0% 661P DHIR

## TROTACRE LORAL TILLER-ET USA000000603341 7GU360

08/08 USDA PTA +625M +0.02% +32F -64NM\$ 9NM%ile  
-0.04% +13P -77CM\$ 98% Rel  
AGA 08/08 PTAT +2.8 97% Rel PTI +123

## MISTY MEADOWS B PEACHES USA000003042942

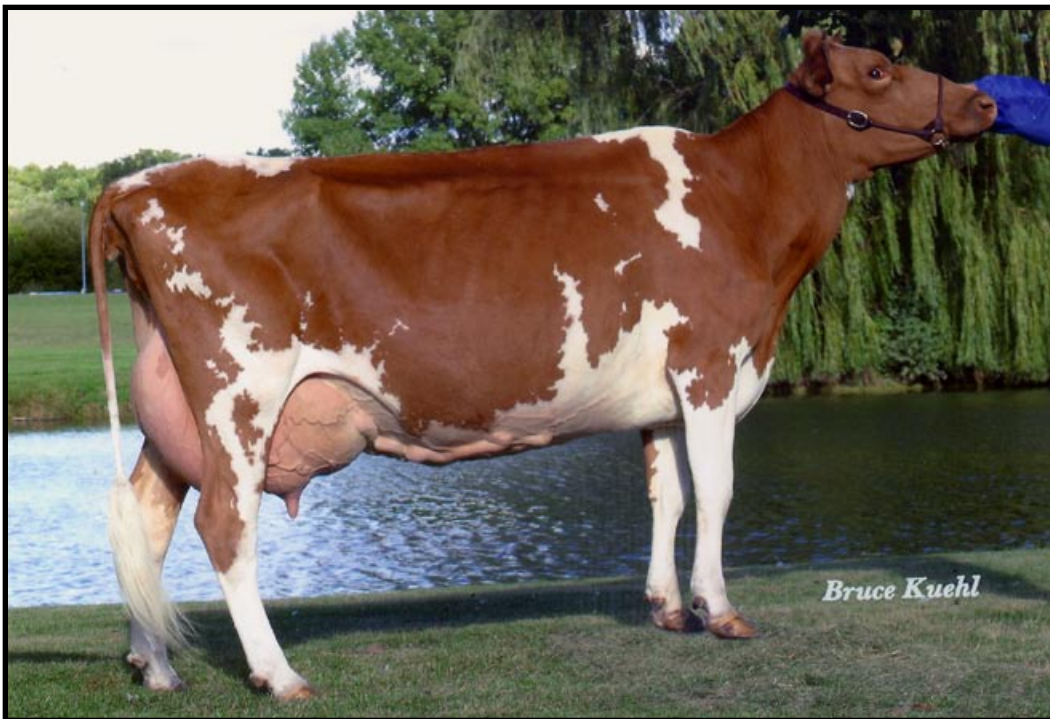
08/08 USDA PTA -478M +0.11% -4F -93NM\$ 11NM%ile  
+0.00% -16P -96CM\$ 61% Rel  
4 Rec YDev: -229M +29F -5P  
3 App 08/08 PTAT +0.5 59% Rel CPI -18  
Appraisal: 93 @ 8-03 (92/95)  
2-10 320D 2X 12630M 4.6% 577F 3.5% 446P DHIA  
3-10 305D 3X 22598M 4.5% 1013F 3.4% 777P DHIR  
5-00 365D 3X 26410M 4.6% 1219F 3.2% 844P DHIA  
6-11 365D 3X 23520M 4.5% 1051F 3.0% 704P DHIA  
8-03 365D 2X 24050M 4.4% 1064F 3.3% 800P DHIA  
2451D 138,200M 4.6% 6,378F 3.4% 4,660P LIFE  
*JR. ALL-AMERICAN AGED COW 2003*  
*HM JR. ALL-AMERICAN AGED COW 2002*  
*NOM. JR. ALL-AMERICAN AGED COW 2004 & 2000*  
*4TH AGED COW NGS-MADISON 2002*  
*5TH AGED COW NGS-MADISON 2003*

MISTY MEADOWS TILLER PHOEBE-ET 85 @ 3-04 (84/82)  
2-07 305D 3X 24880M 3.9% 977F 3.0% 744P 94  
MISTY MEADOWS GAVIN PEACHES-ET 81 @ 3-04 (81/77)  
MISTY MEADOWS GAVINS PRECIOUS-ET 85 @ 2-09 (86/83)  
2-07 362D 3X 17850M 5.9% 1059F 4.1% 728P 103  
MISTY MEADOWS GAVINS PRIMROSE-ET 85 @ 3-00 (83/84)  
2-01 340D 3X 16830M 5.7% 967F 3.4% 566P 103



**Misty Meadows Tiller Patience EX-90**

2-04 365D 26,447M 4.7% 1,247F 3.2% 838P  
HM Jr. All-American Sr. 2-Year-Old 2006  
Dam



**Misty Meadows B Peaches EX-93**

5-00 365D 26,410M 4.6% 1,219F 3.2% 844P  
Jr. All-American Aged Cow 2003  
Granddam