

# DAIRYMAN HILLPOINT BANGER RILEY-ET USA000068014664

Born: 09-28-2006 Tattoo LE HT97  
Breeder: HOARDS DAIRYMAN FARM  
FORT ATKINSON WI  
Owner: HELLENBRAND MICHAEL  
CROSS PLAINS WI

BRED: 02-12-08 DUE: 11-24-08 MALE PREGNANCY  
RIPLEY FARMS R OAK ROYALTY-ET 604259 014GU00292

NOM. ALL-AMERICAN FALL CALF 2007  
4TH FALL CALF NGS-MADISON 2007

PA: +548M -0.01% +23F -0.03% +14P +91CM\$ +98NM\$  
PTAT +1.7 PTI +98  
ST SR BD DF RA TW RL FA  
+0.7 +1.2 +2.0 +0.9 L0.3 +0.5 P0.8 L0.1  
FU RH RW UC UD TP TL  
+1.0 +1.5 +1.6 +1.6 S0.2 C0.8 +0.6

## MY DAY BLISS BANGER-ET USA000000603872 7GU379

08/08 USDA PTA +649M -0.09% +14F +19NM\$ 13NM%ile  
-0.04% +14P +6CM\$ 96% Rel  
AGA 08/08 PTAT +1.3 95% Rel PTI +84  
ST SR BD DF RA TW RL FA  
+1.9 +2.5 +3.4 +0.6 L0.4 +1.3 P1.2 L0.2  
FU RH RW UC UD TP TL  
+0.4 +1.3 +1.5 +1.5 D0.4 C0.2 +1.3

## DAIRYMAN SHARP ROWENA USA000003052872

08/08 USDA PTA +446M +0.07% +32F +177NM\$ 82NM%ile  
-0.01% +13P +175CM\$ 64% Rel  
5 Rec YDev: +994M +76F +33P  
3 App 08/08 PTAT +2.0 61% Rel CPI +109  
Appraisal: 92 @ 7-02 (90/90)  
2-03 348D 2X 17440M 5.2% 901F 3.4% 590P DHIA  
3-04 286D 2X 19580M 4.9% 967F 3.3% 639P DHIA  
4-03 365D 2X 22500M 4.9% 1096F 3.3% 747P DHIA  
5-08 331D 2X 19750M 4.8% 944F 3.3% 660P 94  
6-09 365D 2X 24070M 4.8% 1152F 3.5% 835P DHIA  
2067D 114,710M 5.0% 5,726F 3.4% 3,926P LIFE

DAIRYMAN LORD ROSALIE 83 @ 3-04 (83/80)  
1-11 365D 2X 22520M 4.7% 1051F 3.1% 696P DHIA  
DAIRYMAN TILLER RAVENA-ET 85 @ 2-08 (84/90)  
2-04 365D 2X 21790M 4.7% 1020F 3.4% 751P DHIA  
DAIRYMAN BANGER ROSINA 82 @ 2-03 (84/82)  
2-02 360D 2X 19660M 5.0% 989F 3.3% 650P 95  
DAIRYMAN TILLER ROWANNE-ET 80 @ 2-00 (76/84)  
1-10 305D 2X 15430M 5.6% 866F 3.6% 557P DHIA

## TROTACRE MERCURY LORRY-ET USA602120 14GU258

08/08 USDA PTA +876M +0.01% +40F +178NM\$ 59NM%ile  
-0.07% +17P +156CM\$ 98% Rel  
AGA 08/08 PTAT +0.4 98% Rel PTI +104

## LAESCHLAND PERFECT BLISS-ET USA000003024141

08/08 USDA PTA +588M +0.04% +33F +237NM\$ 92NM%ile  
+0.07% +32P +268CM\$ 80% Rel  
3 App 08/08 PTAT +1.2 79% Rel CPI +137  
Appraisal: 92 @ 4-07  
3-08 365D 2X 35220M\* 3.9% 1382F\* 3.6% 1253P\* DHIA

## TAG LANE IDEAL SHARP-ET USA000000601474 1GU201

08/08 USDA PTA +202M -0.01% +7F -69NM\$ 4NM%ile  
-0.02% +3P -76CM\$ 97% Rel  
AGA 08/08 PTAT +1.5 97% Rel PTI +18

## DAIRYMAN BIONIC ROSINA-ET USA000003033338

08/08 USDA PTA +373M +0.05% +25F +88NM\$ 59NM%ile  
-0.02% +8P +81CM\$ 50% Rel  
3 App 08/08 PTAT +1.2 60% Rel CPI +63  
Appraisal: 84 @ 4-05

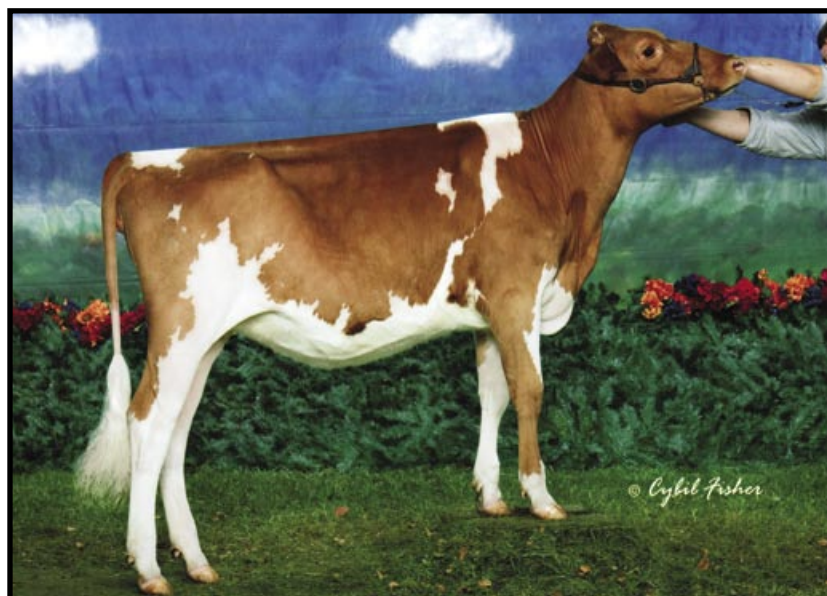
DAIRYMAN MAGIC ROSEWOOD 78 @ 2-05  
2-01 282D 2X 20540M 4.0% 827F 3.1% 640P DHIR  
DAIRYMAN DECISION RUBY 80 @ 4-04 (80/82)  
4-08 365D 2X 26510M 4.0% 1070F 3.3% 869P DHIA

## 3RD DAM: DAIRYMAN AGNI ROSEWOOD USA000002962473

Appraisal: 90 @ 4-03  
4-06 362D 2X 22080M 5.5% 1206F\* 3.6% 786P DHIA

## 4TH DAM: DAIRYMAN FORTRESS ROSEWATER USA2865772

Appraisal: 87 @ 3-08  
3-01 302D 2X 15440M 5.1% 794F 3.7% 564P DHIR



**Dairyman Hillpoint Bang Riley-ET**

Nom. All-American Fall Calf 2007

Selling

# DAIRYMAN HILLPOINT HUD ROYAL-ET USA000068021830

Born: 02-19-2008 Tattoo LE HL5  
Breeder: HOARDS DAIRYMAN FARM  
FORT ATKINSON WI  
Owner: HILLPOINT PARTNERS  
CROSS PLAINS WI

SELLING OPEN

PA: +890M -0.05% +31F -0.03% +24P +128CM\$ +135NM\$  
PTAT +1.9 PTI +138  
ST SR BD DF RA TW RL FA  
+2.5 +1.4 +2.3 +2.6 L0.6 +1.7 P0.7 S0.6  
FU RH RW UC UD TP TL  
-0.3 +1.3 +2.1 +1.5 D1.2 C0.7 +0.8

**JENS GOLD FORT HUDSON USA000000604713 14GU297**  
08/08 USDA PTA +1373M -0.13% +37F +208NM\$ 72NM%ile  
-0.04% +38P +199CM\$ 79% Rel  
AGA 08/08 PTAT +1.1 72% Rel PTI +167  
ST SR BD DF RA TW RL FA  
+3.5 +1.8 +2.3 +2.6 L1.3 +1.7 P0.9 S0.8  
FU RH RW UC UD TP TL  
-1.6 +0.9 +1.7 +1.4 D1.6 W0.7 +1.3

**DAIRYMAN TILLER RAVENA-ET USA000068001258**  
08/08 USDA PTA +407M +0.04% +25F +61NM\$ 49NM%ile  
-0.02% +10P +56CM\$ 54% Rel  
2 Rec YDev: +244M +24F +8P  
1 App 08/08 PTAT +2.6 48% Rel CPI +108  
Appraisal: 85 @ 2-08 (84/90)  
2-04 365D 2X 21790M 4.7% 1020F 3.4% 751P DHIA

**3RD DAM: DAIRYMAN BIONIC ROSINA-ET USA000003033338**  
Appraisal: 84 @ 4-05

**4TH DAM: DAIRYMAN AGNI ROSEWOOD USA000002962473**  
Appraisal: 90 @ 4-03

**5TH DAM: DAIRYMAN FORTRESS ROSEWATER USA2865772**  
Appraisal: 87 @ 3-08  
3-01 302D 2X 15440M 5.1% 794F 3.7% 564P DHIR

**TWIN L FARMS MAGIC FORTRESS-ET USA602409 1GU391**  
08/08 USDA PTA +737M -0.19% -1F +151NM\$ 54NM%ile  
-0.08% +10P +124CM\$ 96% Rel  
AGA 08/08 PTAT +0.6 94% Rel PTI +69

**JENS GOLD VELOUR HANES USA000003054648**  
08/08 USDA PTA +1213M -0.02% +50F +140NM\$ 73NM%ile  
-0.01% +37P +139CM\$ 68% Rel  
4 App 08/08 PTAT +1.4 66% Rel CPI +150  
Appraisal: 92 @ 4-11 (92/92) Gold Star Dam - 2003  
3-02 365D 2X 26710M 4.8% 1289F 3.5% 940P DHIA

**TROTACRE LORAL TILLER-ET USA000000603341 7GU360**  
08/08 USDA PTA +625M +0.02% +32F -64NM\$ 9NM%ile  
-0.04% +13P -77CM\$ 98% Rel  
AGA 08/08 PTAT +2.8 97% Rel PTI +123

**DAIRYMAN SHARP ROWENA USA000003052872**  
08/08 USDA PTA +446M +0.07% +32F +177NM\$ 82NM%ile  
-0.01% +13P +175CM\$ 64% Rel  
5 Rec YDev: +994M +76F +33P  
3 App 08/08 PTAT +2.0 61% Rel CPI +109  
Appraisal: 92 @ 7-02 (90/90)  
2-03 348D 2X 17440M 5.2% 901F 3.4% 590P DHIA  
3-04 286D 2X 19580M 4.9% 967F 3.3% 639P DHIA  
4-03 365D 2X 22500M 4.9% 1096F 3.3% 747P DHIA  
5-08 331D 2X 19750M 4.8% 944F 3.3% 660P 94  
6-09 365D 2X 24070M 4.8% 1152F 3.5% 835P DHIA  
2067D 114710M 5.0% 5726F 3.4% 3926P LIFE  
DAIRYMAN LORD ROSALIE 83 @ 3-04 (83/80)  
1-11 365D 2X 22520M 4.7% 1051F 3.1% 696P DHIA  
DAIRYMAN BANGER ROSINA 82 @ 2-03 (84/82)  
2-02 360D 2X 19660M 5.0% 989F 3.3% 650P 95  
DAIRYMAN TILLER ROWANNE-ET 80 @ 2-00 (76/84)  
1-10 305D 2X 15430M 5.6% 866F 3.6% 557P DHIA



**Dairyman Sharp Rowena EX-92**  
6-09 365D 24,070M 4.8% 1,152F 3.5% 835P