

LOT 3 ROLLANDIA NEMO GINGER GIDGET 000068020365

Born: 03-19-2008 Tattoo LE 2H08
Breeder & Owner: HARRY & MARGARET SWYERS & FAMILY
ROLLANDIA GUERNSEYS
995 85TH AVE
AMERY WI 54001

SELLING OPEN

PA: +669M +0.06% +41F +0.02% +26P +182CM\$ +171NM\$
PTAT +0.3 PTI +100
ST SR BD DF RA TW RL FA
+0.7 +0.1 +0.3 +0.6 H0.2 +0.1 S0.2 L0.2
FU RH RW UC UD TP TL
-0.4 +0.4 +0.5 +0.4 D0.2 W0.1 +0.5

LANG HAVEN JB NEMO 000000605066 (014GU00302)

PA: +893M -0.02% +37F -0.01% +29P +139CM\$ +137NM\$
PTAT +1.0 PTI +114
ST SR BD DF RA TW RL FA
+1.3 +0.2 +0.5 +1.7 H0.6 +0.3 S0.2 S0.2
FU RH RW UC UD TP TL
-0.1 +1.0 +1.3 +0.9 D0.2 C0.6 -0.4

ROLLANDIA SABER GINGER GODIVA 000003065522

01/08 USDA PTA +444M +0.14% +44F +204NM\$ 89NM%ile
+0.05% +23P +224CM\$ 58% Rel
5 Rec YDev: +1233M +106F +62P
3 App 01/08 PTAT -0.5 54% Rel CPI +82
Appraisal: 81 @ 4-11 (79/81)
ST SR BD DF RA TW RL FA FU RH RW UC UD TP TL
37 36 25 23 16 31 21 23 26 17 34 21 15 20 31
2-00 365D 2X 12380M 5.5% 678F 3.6% 441P DHIA
3-03 365D 2X 16520M 5.5% 911F 3.9% 639P DHIA
4-08 331D 2X 19200M 5.5% 1055F 3.6% 696P 94
5-09 305D 2X 16470M 5.2% 858F 3.5% 576P 88
6-09 308D 2X 16570M 4.9% 807F 3.5% 577P 88

ROYAL ACRES ENHANCER JB 00000603423 (001GU00405)

01/08 USDA PTA +678M -0.02% +27F -128NM\$ 0NM%ile
-0.01% +21P -128CM\$ 94% Rel
AGA 01/08 PTAT +0.8 93% Rel PTI +47

LANG HAVEN HOT SHOT NATASHA 000003064890

01/08 USDA PTA +1108M -0.01% +47F +401NM\$ 99NM%ile
+0.00% +36P +406CM\$ 59% Rel
2 App 01/08 PTAT +1.1 54% Rel CPI +177
Appraisal: 90 @ 4-05 (90/85)
3-07 305D 2X 26630M 4.6% 1236F 3.3% 889P 94

TAG LANE BUTTERMOST SABER 00000601734 (009GU00125)

01/08 USDA PTA -1M +0.12% +20F +146NM\$ 54NM%ile
+0.06% +10P +168CM\$ 98% Rel
AGA 01/08 PTAT -0.8 97% Rel PTI +0

ROLLANDIA ORLANDO GINGERODETTE 000003015650

01/08 USDA PTA +348M +0.15% +41F +143NM\$ 76NM%ile
+0.03% +16P +154CM\$ 61% Rel
5 Rec YDev: +1475M +123F +62P
3 App 01/08 PTAT -0.6 57% Rel CPI +57
Appraisal: 83 @ 5-01
2-09 320D 2X 12340M 4.8% 591F 3.6% 442P DHIA
3-09 365D 2X 14590M 5.1% 750F 3.7% 542P DHIA
5-00 319D 2X 16010M 5.4% 862F 3.8% 607P DHIA
6-01 365D 2X 18990M 5.3% 1009F 3.7% 701P DHIA
ROLLANDIA DUKE GINGER SWEET 83 @ 5-03
7-00 334D 2X 15800M 4.5% 707F 3.4% 536P 95

THIRD DAM: ROLLANDIA FAYET GINGERCOKIE 000002953776

Appraisal: 87 @ 4-02

FOURTH DAM: ROLLANDIA ROLEX GINGERSNAP 2910629

Appraisal: 83 @ 3-04

FIFTH DAM: LAMBRECHT G B GILDA 000002829257

Appraisal: 86 @ 3-08

LOT 4 MARSHALLANE KHAN CREAM 000068013552

Born: 11-10-2006 Tattoo: LE A493
Breeder & Owner: HANSEN FARMS
W8450 COUNTY HWY A
NEW LISBON WI 53950

BRED: 03-14-08
SNIDERS OPTION AARON-ET 604670 007GU00395
JOHNES VACCINATE

PA: +550M +0.05% +33F +0.01% +19P +166CM\$ +162NM\$
PTAT +1.5 PTI +114
ST SR BD DF RA TW RL FA
+0.9 +0.6 +0.5 +1.0 H0.7 +1.1 P0.1 S0.3
FU RH RW UC UD TP TL
+1.4 +1.2 +1.3 +0.4 S0.9 C0.5 -0.3

RIVERWOOD TILLER KHAN 00000605000 (007GU00409)

PA: +771M +0.10% +52F +0.02% +29P +218CM\$ +207NM\$
PTAT +2.2 PTI +172
ST SR BD DF RA TW RL FA
+2.3 +1.5 +1.8 +2.0 H1.8 +1.9 P0.1 S0.4
FU RH RW UC UD TP TL
+1.5 +1.5 +2.0 +0.5 S0.5 C1.0 -0.5

MARSHALLANE ROYAL CHARITY 000003074062

01/08 USDA PTA +328M +0.00% +14F +117NM\$ 70NM%ile
-0.01% +9P +114CM\$ 56% Rel
4 Rec YDev: +595M +21F +15P
4 App 01/08 PTAT +0.7 56% Rel CPI +52
Appraisal: 88 @ 4-04 (88/91)
ST SR BD DF RA TW RL FA FU RH RW UC UD TP TL
13 24 19 38 27 26 23 34 22 41 46 28 23 16 15
1-11 343D 2X 15490M 4.5% 694F 3.4% 519P 95
3-00 305D 2X 16420M 4.4% 716F 3.3% 542P 93
4-02 342D 2X 21840M 4.4% 964F 3.3% 711P 94

MARSHALLANE GLACIER CHARMIN 85 @ 4-03 (85/79)
2-11 364D 2X 21900M 4.2% 927F 3.4% 734P 23

TROTACRE LORAL TILLER-ET 00000603341 (007GU00360)

01/08 USDA PTA +671M +0.01% +32F -19NM\$ 13NM%ile
-0.05% +14P -33CM\$ 97% Rel
AGA 01/08 PTAT +2.8 97% Rel PTI +132

RIVERWOOD GLACIER KUKU 000003052931

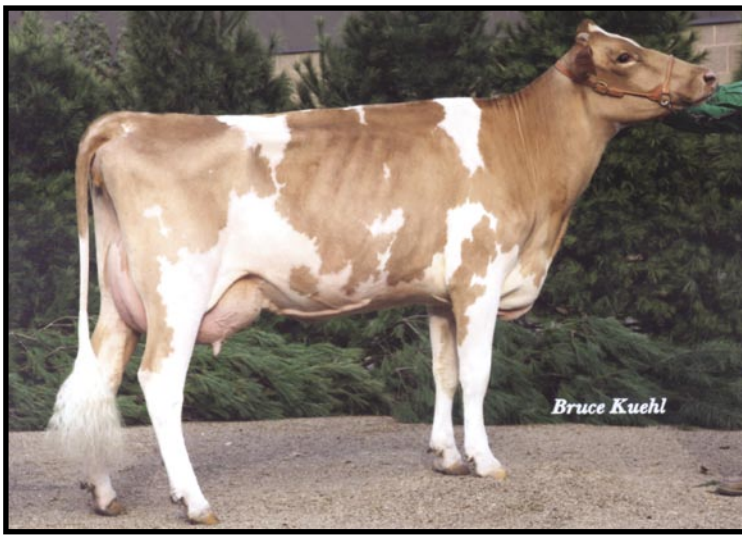
01/08 USDA PTA +870M +0.19% +72F +432NM\$ 99NM%ile
+0.08% +43P +468CM\$ 62% Rel
3 App 01/08 PTAT +1.5 58% Rel CPI +210
Appraisal: 88 @ 5-02 Gold Star Dam - 2002
6-11 305D 2X 23910M 4.4% 1047F 3.8% 905P 94

ALDENS VALIANT ROYAL-ET 00000603966 (200GU00106)

01/08 USDA PTA +69M +0.08% +16F -43NM\$ 9NM%ile
+0.02% +6P -35CM\$ 86% Rel
AGA 01/08 PTAT +0.9 81% Rel PTI +42

MARSHALLANE JIMCO CHARLOT 000003035190

01/08 USDA PTA +413M -0.01% +16F +88NM\$ 61NM%ile
-0.01% +11P +84CM\$ 60% Rel
5 Rec YDev: +1155M +33F +35P
2 App 01/08 PTAT -0.8 54% Rel CPI +21
Appraisal: 85 @ 3-11
2-00 305D 2X 16810M 4.2% 707F 3.5% 588P DHIR
3-06 305D 2X 18800M 4.1% 769F 3.5% 660P DHIR
4-09 305D 2X 22770M 4.2% 964F 3.2% 728P DHIA
6-04 305D 2X 19960M 4.3% 855F 3.3% 650P DHIA
7-06 305D 2X 21900M 3.8% 833F 3.1% 684P 95
2148D 124,020M 4.2% 5,226F 3.4% 4,182P LIFE



Hartdale Keystone Kit Kat EX-90

Nom. All-American Jr. 2-Year-Old 2006

Maternal Sister to Lot 5

LOT 5 HARTDALE AMEN KATRINA

Born: 09-23-2005 Tattoo RE 95
Breeder: KEVIN HARTMANN & JADE KOERTGE
MULBERRY IL
Owner: LAUREN T ROBISON
904 S 7TH ST
MULBERRY GROVE IL 62262

PA: +112M +0.06% +14F +0.03% +8P -36CM\$ -46NM\$
PTAT -0.1 PTI +24
ST SR BD DF RA TW RL FA
+1.5 +0.6 +0.8 +1.1 L0.8 +0.7 P0.6 S0.4
FU RH RW UC UD TP TL
-0.9 +0.3 +0.6 +0.1 D1.7 0.0 +1.4

BLACKWATER LORD AMEN 000000602825 (009GU00141)

01/08 USDA PTA +245M +0.04% +18F -38NM\$ 9NM%ile
+0.05% +16P -19CM\$ 93% Rel
AGA 01/08 PTAT -1.0 92% Rel PTI +20
ST SR BD DF RA TW RL FA
+3.1 +0.9 +1.5 +2.3 L1.5 +1.6 P1.0 S0.6
FU RH RW UC UD TP TL
-2.8 +0.2 +0.5 -1.2 D4.3 W1.1 +2.8

HARTDALE VALIANT KATYLN 000003075198

01/08 USDA PTA -21M +0.07% +10F -53NM\$ 19NM%ile
+0.00% +0P -52CM\$ 48% Rel
2 Rec YDev: +993M +66F +31P
3 App 01/08 PTAT +0.8 51% Rel CPI +29
Appraisal: 91 @ 6-02 (91/87)
ST SR BD DF RA TW RL FA FU RH RW UC UD TP TL
40 40 39 35 22 38 37 32 33 37 30 37 24 33 35
2-04 305D 2X 16370M 4.8% 793F 3.1% 503P 27
3-10 305D 2X 18750M 4.1% 772F 3.1% 580P 92
2ND FALL YEARLING IL STATE FAIR 2003

HARTDALE KEYSTONE KIT KAT 90 @ 3-10 (91/90)
NOM. JR. ALL-AMERICAN JR. 3-YEAR-OLD 2007
NOM. ALL-AMERICAN JR. 2-YEAR-OLD 2006
RES. GRAND CHAMPION KY KOW-A-RAMA 2007
RES. JR CHAMPION IL STATE FAIR 2004



Hartdale Showtime Koolaid

3rd Fall Calf NGS-Louisville 2007

Daughter of Kit Kat

000068009974

FRESH 01-07-08
BRED: 03-18-08 DUE: 12-28-08
FOUR WINDS SHOWTIME-ET 68002690 200GU00941

TROTACRE MERCURY LORD-ET 000000602119 (009GU00131)

J01/08 USDA PTA +164M +0.04% +14F +64NM\$ 31NM%ile
+0.01% +7P +68CM\$ 97% Rel
AGA 01/08 PTAT -0.1 96% Rel PTI +33

BLACKWATER P JAY ADDIE 000003001068

01/08 USDA PTA +364M +0.08% +30F +100NM\$ 64NM%ile
+0.09% +27P +134CM\$ 74% Rel
4 Rec YDev: +1497M +107F +80P
3 App 01/08 PTAT -0.7 72% Rel CPI +65
Appraisal: 86 @ 5-10 Gold Star Dam - 1996
3-05 333D 2X 21330M 5.0% 1072F 3.7% 798P DHIA

TAMARACKS PERFECTOS VALIANT-ET 602300 (009GU00134)

01/08 USDA PTA -66M +0.05% +6F -132NM\$ 0NM%ile
+0.00% -2P -132CM\$ 97% Rel
AGA 01/08 PTAT +1.4 97% Rel PTI +28

HARTDALE AMBIONIC KATIE 000003054940

01/08 USDA PTA -596M +0.09% -12F -149NM\$ 4NM%ile
+0.03% -14P -140CM\$ 45% Rel
2 Rec YDev: -1682M -37F -47P
1 App 01/08 PTAT -0.5 43% Rel CPI -62
Appraisal: 73 @ 3-03
2-05 305D 2X 11380M 4.9% 560F 3.2% 364P DHIA

THIRD DAM: HARTDALE CARL KELLY 000003042642

Appraisal: 84 @ 3-04

FOURTH DAM: UP A HILL M KORTNEY 000002971336

Appraisal: 83 @ 6-08