

LOT 26 MARSHALLANE ROYALTY REVEL-TW 000068013549

Born: 09-01-2006 Tattoo LE RE A490
Breeder & Owner: HANSEN FARMS
W8450 COUNTY HWY A
NEW LISBON WI 53950

BRED: 03-25-08
SNIDERS OPTION AARON-ET 604670 007GU00395
JOHNES VACCINATE

PA: +663M -0.01% +29F -0.07% +10P +95CM\$ +118NM\$
PTAT +1.2 PTI +95
ST SR BD DF RA TW RL FA
+2.1 +0.5 +0.2 +1.6 L1.4 +0.0 S0.8 S0.3
FU RH RW UC UD TP TL
+1.2 +1.6 +1.1 +0.7 S0.9 C1.1 +0.2

RIPLEY FARMS R OAK ROYALTY-ET 00000604259 (014GU00292)

01/08 USDA PTA +1035M -0.05% +37F +82NM\$ 36NM%ile
-0.09% +18P +51CM\$ 88% Rel
AGA 01/08 PTAT +1.8 85% Rel PTI +124
ST SR BD DF RA TW RL FA
+4.9 +1.8 +1.4 +2.5 L2.5 +1.4 S0.9 S0.4
FU RH RW UC UD TP TL
+0.9 +1.4 +1.6 +0.9 S0.6 C0.9 +0.6

LANTZ FARM JULES RAISIN-ET 000003081540

01/08 USDA PTA +290M +0.04% +20F +154NM\$ 79NM%ile
-0.04% +2P +139CM\$ 56% Rel
3 Rec YDev: +88M +18F -6P
4 App 01/08 PTAT +0.5 57% Rel CPI +60
Appraisal: 86 @ 5-01 (85/82)
ST SR BD DF RA TW RL FA FU RH RW UC UD TP TL
27 27 23 22 21 23 31 37 36 37 34 26 25 25 25
2-01 350D 2X 17540M 4.8% 838F 3.1% 552P 95
3-02 305D 2X 15760M 4.5% 709F 3.4% 540P 94
4-04 365D 2X 21650M 4.7% 1028F 3.4% 739P DHIA

JENSGOLDEN PROKING ROYAL OAK 602216 (007GU00330)

01/08 USDA PTA +499M +0.09% +37F +79NM\$ 31NM%ile
+0.01% +18P +85CM\$ 96% Rel
AGA 01/08 PTAT +2.1 94% Rel PTI +138

RIPLEY FARMS ENHANCER RAINBOW-ET000003051803

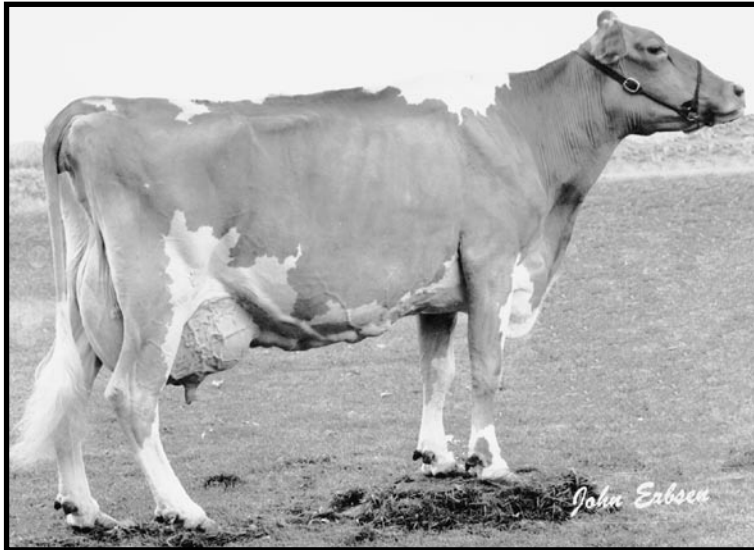
01/08 USDA PTA +1326M -0.12% +38F +43NM\$ 45NM%ile
-0.12% +22P +3CM\$ 66% Rel
2 Rec YDev: +4269M +138F +83P
2 App 01/08 PTAT +1.4 65% Rel CPI +96
Appraisal: 90 @ 4-09
4-01 305D 3X 26850M 4.2% 1139F 2.8% 757P DHIA

ROZELYN ENHANCER JULES-ET 00000603287 (014GU00279)

01/08 USDA PTA +785M +0.02% +38F +188NM\$ 63NM%ile
-0.06% +15P +169CM\$ 94% Rel
AGA 01/08 PTAT -0.6 93% Rel PTI +54

BREEZY POINT P RACER 000003025568

01/08 USDA PTA +215M +0.04% +17F +164NM\$ 81NM%ile
-0.05% -1P +147CM\$ 70% Rel
3 Rec YDev: +1359M +83F +26P
3 App 01/08 PTAT +0.9 68% Rel CPI +73
Appraisal: 93 @ 7-03
Gold Star Dam - 2001
2-09 365D 2X 18050M 4.7% 841F 3.3% 600P DHIA
3-11 363D 2X 19300M 4.9% 943F 3.3% 640P DHIA
6-06 365D 3X 46154M* 4.7% 2175F* 3.1% 1408P* DHIA
1423D 102,390M 4.9% 4,984F 3.3% 3,351P LIFE
WORLD RECORD HOLDER FOR MILK



Breezy Point P Racer EX-93

6-06 365D 46,154M 4.7% 2,175F 3.1% 1,408P
World Record Holder for Milk!
Granddam of Lot 26

LANTZ FARM RO RACERS RESPONSE-ET PTI +96 @ GENEX
LANTZ FARM ENHANCER RUNNER-ET 72 @ 3-09 (70/75)
3-03 365D 2X 29480M 3.4% 998F 3.0% 871P DHIA
LANTZ FARM TILLER RESPECT-ET 86 @ 3-00 (86/86)
2-03 276D 2X 20170M 4.3% 864F 3.0% 603P 92
LANTZ FARM RO REPLIC-ET 91 @ 4-06 (91/91)
4-03 365D 2X 28710M 4.7% 1350F 3.3% 948P 100
LANTZ FARM IDLENEER S RAVEN-ET 90 @ 4-07 (90/92)
4-04 365D 2X 18020M 4.3% 767F 3.3% 594P DHIA
LANTZ FARM JULES RACER TWO-ET 82 @ 4-04 (78/90)
3-03 351D 2X 23070M 5.1% 1169F 3.2% 749P 94
LANTZ FARM JULES RACER THREE-ET 79 @ 5-06 (78/74)
4-04 297D 2X 20750M 4.6% 959F 3.3% 676P DHIA
LANTZ FARM JULES RAZZI-ET 87 @ 5-05 (87/83)
LANTZ FARM SHARP NASCAR-ET 85 @ 3-09 (86/88)
LANTZ FARM JULE REBA-ET 77 @ 2-08 (77/81)
LANTZ FARM RACERS REJOICE-ET
4-03 365D 2X 19860M 4.8% 960F 3.5% 687P DHIA

LOT 27 IDLE GOLD ALTANIC NOVEL 000068018694

Born: 07-12-2007 Tattoo LE I394
 Breeder: & Owner: NEIL & JANICE JENSEN
 IDLE GOLD GUERNSEYS
 1938 25TH ST
 COMSTOCK WI 54826

SELLING OPEN
 JOHNES VACCINATE

PA: +288M +0.01% +14F -0.03% +5P +81CM\$ +90NM\$
 PTAT +1.1 PTI +62
 ST SR BD DF RA TW RL FA
 -0.1 -0.1 -0.5 +0.5 H1.5 +0.3 P0.1 S0.3
 FU RH RW UC UD TP TL
 +1.4 +1.4 +1.2 +0.5 S1.1 C0.6 -0.3

SNIDERS TILLER ALTANIC 000068003602 (007GU00417)
 PA: +708M +0.05% +40F -0.06% +14P +103CM\$ +121NM\$
 PTAT +2.2 PTI +133
 ST SR BD DF RA TW RL FA
 +1.1 +1.4 +1.2 +1.6 H1.7 +2.0 S0.2 S0.8
 FU RH RW UC UD TP TL
 +2.2 +2.0 +2.1 +0.7 S0.8 C1.1 +0.3

IDLE GOLD SPIKE NICKNACK 000003076740
 01/08 USDA PTA -132M -0.04% -13F +58NM\$ 50NM%ile
 +0.00% -4P +58CM\$ 52% Rel
 3 Rec YDev: -223M -22F -3P
 3 App 01/08 PTAT -0.1 50% Rel CPI -13
 Appraisal: 81 @ 4-04 (84/83)
 ST SR BD DF RA TW RL FA FU RH RW UC UD TP TL
 26 14 2 29 22 13 23 31 18 26 40 34 22 22 24
 2-02 336D 2X 13640M 4.4% 596F 3.5% 478P 94
 3-03 304D 2X 15220M 4.5% 688F 3.7% 557P 93
 4-02 322D 2X 15900M 4.2% 663F 3.5% 559P 93

THIRD DAM: SCHWINGHAMER FARM J NINA 000002959351
 Appraisal: 85 @ 4-08
 4-07 305D 2X 15610M 3.9% 601F 3.4% 532P DHIR
FOURTH DAM: SCHWINGHAMER FARM IRENE 2852840
 Appraisal: 89 @ 6-06
 7-11 305D 2X 14670M 5.1% 750F 3.4% 502P DHIR

TROTACRE LORAL TILLER-ET 00000603341 (007GU00360)
 01/08 USDA PTA +671M +0.01% +32F -19NM\$ 13NM%ile
 -0.05% +14P -33CM\$ 97% Rel
 AGA 01/08 PTAT +2.8 97% Rel PTI +132

CEDAR FRINGED ALTANN 000003045188
 01/08 USDA PTA +744M +0.09% +48F +260NM\$ 95NM%ile
 -0.06% +13P +239CM\$ 78% Rel
 4 Rec YDev: +2300M +134F +54P
 5 App 01/08 PTAT +1.6 77% Rel CPI +133
 Appraisal: 95 @ 6-11 (95/93) Gold Star Dam - 2001
 6-04 305D 2X 27640M 4.8% 1324F 3.0% 825P 94

IDLE NEER SPRINGS SPIKE 00000602992 (107GU01133)
 01/08 USDA PTA +285M -0.03% +8F +24NM\$ 22NM%ile
 -0.04% +3P +12CM\$ 64% Rel
 AGA 01/08 PTAT +0.8 62% Rel PTI +29

IDLE GOLD EL GATO NIKKI 000003039179
 01/08 USDA PTA -593M -0.07% -38F +10NM\$ 35NM%ile
 +0.03% -14P +19CM\$ 63% Rel
 5 Rec YDev: -1324M -84F -28P
 3 App 01/08 PTAT -1.0 59% Rel CPI -72
 Appraisal: 75 @ 5-01
 3-08 302D 2X 16020M 4.3% 682F 3.6% 571P DHIA
 4-07 326D 2X 14190M 4.2% 589F 3.5% 494P 99
 5-08 328D 2X 17700M 3.8% 675F 3.4% 594P 99
 6-08 305D 2X 16210M 4.2% 686F 3.3% 535P DHIA

IDLE GOLD HUNTER NAGANO 85 @ 2-06
 IDLE GOLD POORBOY NALA 72 @ 4-08 (75/67)
 4-03 348D 2X 17820M 3.4% 603F 3.2% 566P 93

LOT 28 VALLEY GEM CHRISTIAN SILK 000068020333

Born: 01-06-2008 Tattoo LE 852 RE VGF
 Breeder & Owner: BRANDON GREWE
 952 19TH AVE
 CUMBERLAND WI 54829

SELLING OPEN

IDLE GOLD M CHRISTIAN-TW 000068002857 (007GU00418)
 PA: +1585M -0.08% +56F -0.06% +41P +214CM\$ +232NM\$
 PTAT +1.8 PTI +187
 ST SR BD DF RA TW RL FA
 +3.4 +1.3 +1.8 +2.9 L1.9 +1.7 P0.3 S0.5
 FU RH RW UC UD TP TL
 +0.9 +2.3 +2.6 +1.9 S0.2 C0.1 +0.2

LANE VIEW SALUTE SALLIE 000003060551
 01/08 USDA PTA -215M +0.02% -7F -92NM\$ 11NM%ile
 -0.02% -9P -98CM\$ 54% Rel
 2 Rec YDev: -974M -25F -29P
 Appraisal: 82 @ 6-10 (80/80)
 ST SR BD DF RA TW RL FA FU RH RW UC UD TP TL
 32 34 35 30 27 32 20 20 18 27 33 41 20 20 28
 5-02 363D 2X 19430M 4.4% 864F 3.3% 634P 100
 6-04 329D 2X 15830M 4.8% 766F 3.3% 524P 70
 7-10 305D 3X 16020M 4.9% 789F 3.2% 511P 103

LANE VIEW RAPTOR SARA 70 @ 3-08 (70/65)
 2-02 313D 2X 15480M 4.2% 649F 3.1% 479P 100
 LANE VIEW TILLER STORM
 2-01 305D 2X 16600M 5.1% 852F 3.3% 550P 74

MARFRED MAXIE-ET 00000603635 (054GU00440)
 01/08 USDA PTA +1045M -0.06% +35F +131NM\$ 45NM%ile
 -0.05% +25P +115CM\$ 84% Rel
 AGA 01/08 PTAT +1.2 83% Rel PTI +104

IDLE GOLD ROYAL CONTESSA-ET 000003069270
 01/08 USDA PTA +2125M -0.10% +76F +332NM\$ 98NM%ile
 -0.07% +56P +312CM\$ 59% Rel
 4 Rec YDev: +5678M +198F +151P
 3 App 01/08 PTAT +2.4 57% Rel CPI +267
 Appraisal: 88 @ 5-10 (86/88) Gold Star Dam - 2006
 5-02 305D 2X 35320M* 4.3% 1536F 2.9% 1019P 93

WALNUT HILL ENHANCER SALUTE-ET 603136 (001GU00209)
 01/08 USDA PTA +354M -0.11% -3F -147NM\$ 0NM%ile
 -0.08% -2P -175CM\$ 84% Rel
 AGA 01/08 PTAT -0.5 79% Rel PTI -33

LANE VIEW PERFECTO SHARON 000003012894
 01/08 USDA PTA -690M +0.13% -10F +33NM\$ 42NM%ile
 +0.07% -12P +53CM\$ 59% Rel
 5 Rec YDev: -1234M +14F -6P
 2-02 294D 2X 14150M 5.2% 731F 4.0% 564P DHIA
 3-02 278D 2X 13210M 5.3% 705F 4.0% 534P DHIA
 4-01 289D 2X 14470M 5.3% 774F 3.9% 571P DHIA
 5-01 305D 2X 15820M 5.0% 797F 3.7% 589P DHIR

LANE VIEW MAGIC SHELLEY 74 @ 4-03
 2-08 305D 2X 17020M 4.5% 758F 3.3% 569P DHIR