



Four Winds Adm B Silk EX-93

3X HM All-American in Milking Form
Maternal Family Member of Lots 34 & 35

LOT 34 CHUPPS FRIENDSHIP FARM CINDY-TW USA000068019050

Born: 01-20-2007 Tattoo LE C543 RE C543
Breeder & Owner: FRIENDSHIP FARM & CHUPPS GUERNSEY FARM
560 VERBANK RD
MILLBROOK NY 12545

PA: -222M +0.05% -2F +0.02% -6P +15CM\$ +12NM\$
+0.6PTAT +0.9UDC +0.6FLC -0.1DPR +0.9PL +18PTI
ST SR BD DF RA TW RV RL FA
+0.8 +0.3 -0.2 -1.0 H0.9 +0.5 S0.1 P0.2 S0.6
FU RH RW UC UD TP TL
+1.9 +0.7 -0.4 -0.2 S2.3 C0.7 -0.9

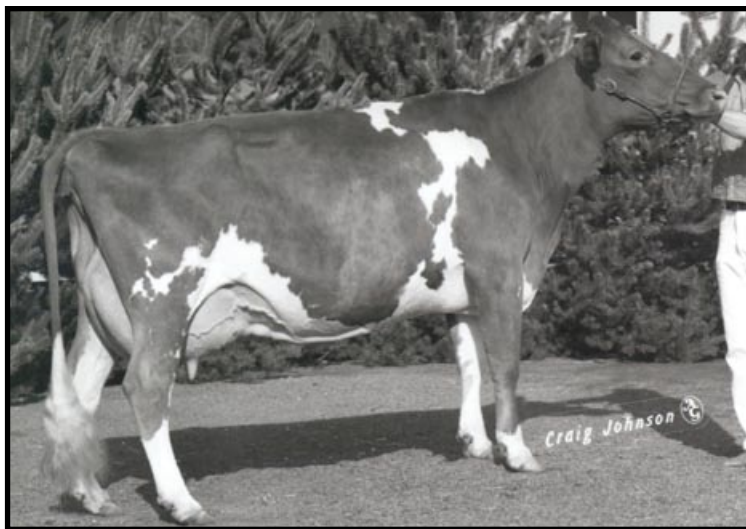
VILLA CREST FAME MARQUIS USA000068002955

PA: -153M +0.04% -1F +0.01% -5P +61CM\$ +61NM\$
+0.8PTAT +1.0UDC +0.6FLC +0.7DPR +1.3PL +30PTI
ST SR BD DF RA TW RV RL FA
+1.7 +0.1 -0.1 -0.2 H0.6 +0.5 S0.1 P0.2 S0.6
FU RH RW UC UD TP TL
+1.3 +1.0 +0.1 +0.8 S2.4 C0.8 -0.1

FOUR WINDS B CHARMER-TW USA000003060412

01/09 USDA PTA -291M +0.06% -3F +0.02% -6P
-0.9DPR +0.5PL -37NM\$ 20NM%ile -31CM\$ 57% Rel
5 Rec YDev: -235M +6F +1P
3 App 01/09 PTAT +0.3 +0.7UDC +0.6FLC 52%Rel CPI +5
Appraisal: 88 @ 5-01 (88/85)
ST SR BD DF RA TW RL FA FU RH RW UC UD TP TL
33 29 27 36 17 32 20 26 41 35 30 19 22 20 32
2-02 305D 2X 12410M 4.1% 503F 3.2% 403P DHIA
3-07 364D 2X 17480M 5.3% 928F 3.4% 587P 95
5-01 345D 2X 18800M 4.9% 921F 3.2% 597P 21
6-04 305D 2X 19570M 4.4% 853F 3.2% 632P 93
7-10 305D 2X 16740M 4.2% 702F 3.1% 525P 94
2087D 105,050M 4.7% 4,899F 3.3% 3,472P LIFE
2ND JR. 2-YEAR-OLD IL STATE FAIR 2001

FRIENDALE PERFECT CHARM 83 @ 4-04 (83/83)
3-06 305D 2X 16150M 4.6% 735F 3.4% 555P 91
FRIENDSHIP D CHARDENAY-TW 78 @ 2-05 (78/86)



Shady View DF Strawberry EX-93

All-American Aged Cow 1988
Maternal Sister to 3rd Dam of Lots 34 & 35

SELLING FRESH & OPEN

VILLA CREST P FAME USA000000604077

01/09 USDA PTA -19M -0.01% -3F -0.01% -3P
-1.2DPR -2.2PL -95NM\$ 4NM%ile -100CM\$ 64% Rel
AGA 01/09 PTAT +1.1 +0.9UDC +0.7FLC 68%Rel PTI +16

MAR RAL GOLIATH MODEL-ET USA000003064944

+2.6DPR +4.8PL +217NM\$ 87NM%ile +221CM\$ 60% Rel
1 App 01/09 PTAT +0.4 +1.1UDC +0.4FLC 51%Rel CPI +43
Appraisal: 91 @ 8-01 (90/86)
5-10 365D 2X 29960M 4.8% 1444F 3.3% 990P DHIA

MARFRED BOSSMAN-ET USA000000601056 7GU306

01/09 USDA PTA -188M +0.01% -7F +0.00% -6P
-0.1DPR +0.7PL -42NM\$ 9NM%ile -42CM\$ 96% Rel
AGA 01/09 PTAT +0.7 +0.8UDC -0.1FLC 96%Rel PTI -4

FOUR WINDS OK BLOSSOM-ET USA000003040107

01/09 USDA PTA -821M +0.14% -14F +0.05% -19P
-1.5DPR -2.2PL -211NM\$ 1NM%ile -197CM\$ 55% Rel
3 Rec YDev: -2281M -32F -47P
3 App 01/09 PTAT +0.4 +0.4UDC +1.0FLC 54%Rel CPI -36
Appraisal: 91 @ 4-09
2-01 365D 2X 17920M 4.6% 832F 3.5% 627P DHIA
3-03 305D 2X 17330M 4.6% 802F 3.4% 590P DHIA

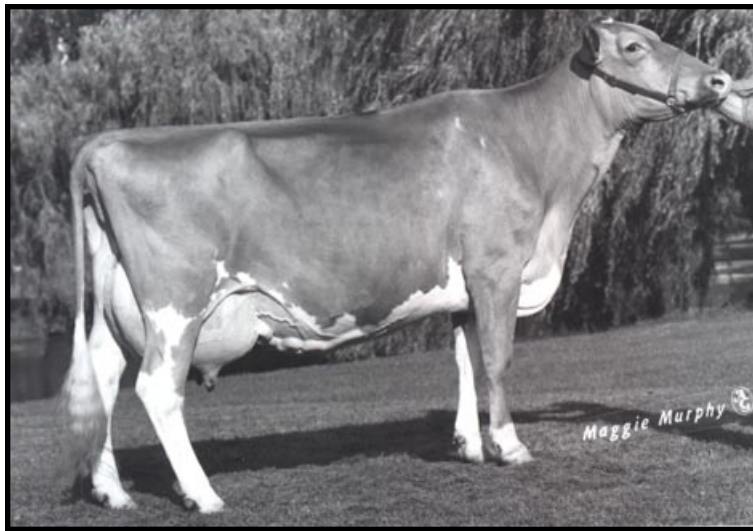
FOUR WINDS BOSSMAN CRYSTAL 86 @ 2-08
HM ALL-AMERICAN WINTER CALF 1998

3RD DAM: FOUR WINDS B T BLOSSOM USA000002899922

Appraisal: 93 @ 8-09
5-11 365D 2X 22780M 4.2% 967F 3.4% 780P DHIA
7-02 365D 2X 24710M 4.3% 1060F 3.6% 878P DHIA
2034D 100,980M 4.5% 4,548F 3.7% 3,781P LIFE
RES. ALL-AMERICAN AGED COW 1991
HM ALL-AMERICAN 4-YEAR-OLD 1989
DAM OF: FOUR WINDS MAGICMAN-ET PTI +39

4TH DAM: BUTENSCHOENS P W CHERRY USA000002706399

Appraisal: 91 @ 9-09
1ST AGED COW NGS-LOUISVILLE 1981
RES GRAND CHAMPION NJS-LOUISVILLE 1981



Four Winds BT Blossom EX-93

3rd Dam of Lot 34 & 35

LOT 35 CHUPPS FRIENDSHIP FARM CHLOE-TW USA000068019051

Born: 01-20-2007 Tattoo LE C544 RE C544
Breeder & Owner: FRIENDSHIP FARM & CHUPPS GUERNSEY FARM
560 VERBANK RD
MILLBROOK NY 12545

PA: -222M +0.05% -2F +0.02% -6P +15CM\$ +12NM\$
+0.6PTAT +0.9UDC +0.6FLC -0.1DPR +0.9PL +18PTI
ST SR BD DF RA TW RV RL FA
+0.8 +0.3 -0.2 -1.0 H0.9 +0.5 S0.1 P0.2 S0.6
FU RH RW UC UD TP TL
+1.9 +0.7 -0.4 -0.2 S2.3 C0.7 -0.9

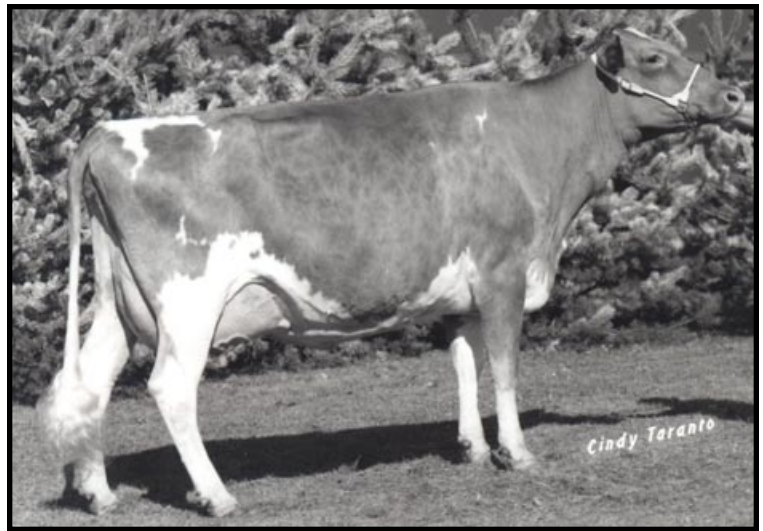
VILLA CREST FAME MARQUIS USA000068002955

PA: -153M +0.04% -1F +0.01% -5P +61CM\$ +61NM\$
+0.8PTAT +1.0UDC +0.6FLC +0.7DPR +1.3PL +30PTI
ST SR BD DF RA TW RV RL FA
+1.7 +0.1 -0.1 -0.2 H0.6 +0.5 S0.1 P0.2 S0.6
FU RH RW UC UD TP TL
+1.3 +1.0 +0.1 +0.8 S2.4 C0.8 -0.1

FOUR WINDS B CHARMER-TW USA000003060412

01/09 USDA PTA -291M +0.06% -3F +0.02% -6P
-0.9DPR +0.5PL -37NM\$ 20NM%ile -31CM\$ 57% Rel
5 Rec YDev: -235M +6F +1P
3 App 01/09 PTAT +0.3 +0.7UDC +0.6FLC 52%Rel CPI +5
Appraisal: 88 @ 5-01 (88/85)
ST SR BD DF RA TW RL FA FU RH RW UC UD TP TL
33 29 27 36 17 32 20 26 41 35 30 19 22 20 32
2-02 305D 2X 12410M 4.1% 503F 3.2% 403P DHIA
3-07 364D 2X 17480M 5.3% 928F 3.4% 587P 95
5-01 345D 2X 18800M 4.9% 921F 3.2% 597P 21
6-04 305D 2X 19570M 4.4% 853F 3.2% 632P 93
7-10 305D 2X 16740M 4.2% 702F 3.1% 525P 94
2087D 105,050M 4.7% 4,899F 3.3% 3,472P LIFE
2ND JR. 2-YEAR-OLD IL STATE FAIR 2001

FRIENDALE PERFECT CHARM 83 @ 4-04 (83/83)
3-06 305D 2X 16150M 4.6% 735F 3.4% 555P 91
FRIENDSHIP D CHARDENAY-TW 78 @ 2-05 (78/86)



Butenschoens PW Cherry EX-91

4th Dam of Lot 34 & 35

SELLING FRESH & OPEN

VILLA CREST P FAME USA000000604077

01/09 USDA PTA -19M -0.01% -3F -0.01% -3P
-1.2DPR -2.2PL -95NM\$ 4NM%ile -100CM\$ 64% Rel
AGA 01/09 PTAT +1.1 +0.9UDC +0.7FLC 68%Rel PTI +16

MAR RAL GOLIATH MODEL-ET USA000003064944

+2.6DPR +4.8PL +217NM\$ 87NM%ile +221CM\$ 60% Rel
1 App 01/09 PTAT +0.4 +1.1UDC +0.4FLC 51%Rel CPI +43
Appraisal: 91 @ 8-01 (90/86)
5-10 365D 2X 29960M 4.8% 1444F 3.3% 990P DHIA

MARFRED BOSSMAN-ET USA000000601056 7GU306

01/09 USDA PTA -188M +0.01% -7F +0.00% -6P
-0.1DPR +0.7PL -42NM\$ 9NM%ile -42CM\$ 96% Rel
AGA 01/09 PTAT +0.7 +0.8UDC -0.1FLC 96%Rel PTI -4

FOUR WINDS OK BLOSSOM-ET USA000003040107

01/09 USDA PTA -821M +0.14% -14F +0.05% -19P
-1.5DPR -2.2PL -211NM\$ 1NM%ile -197CM\$ 55% Rel
3 Rec YDev: -2281M -32F -47P
3 App 01/09 PTAT +0.4 +0.4UDC +1.0FLC 54%Rel CPI -36
Appraisal: 91 @ 4-09
2-01 365D 2X 17920M 4.6% 832F 3.5% 627P DHIA
3-03 305D 2X 17330M 4.6% 802F 3.4% 590P DHIA

FOUR WINDS BOSSMAN CRYSTAL 86 @ 2-08
HM ALL-AMERICAN WINTER CALF 1998

3RD DAM: FOUR WINDS B T BLOSSOM USA000002899922

Appraisal: 93 @ 8-09
5-11 365D 2X 22780M 4.2% 967F 3.4% 780P DHIA
7-02 365D 2X 24710M 4.3% 1060F 3.6% 878P DHIA
2034D 100,980M 4.5% 4,548F 3.7% 3,781P LIFE
RES. ALL-AMERICAN AGED COW 1991
HM ALL-AMERICAN 4-YEAR-OLD 1989
DAM OF: FOUR WINDS MAGICMAN-ET PTI +39

4TH DAM: BUTENSCHOENS P W CHERRY USA000002706399

Appraisal: 91 @ 9-09
1ST AGED COW NGS-LOUISVILLE 1981
RES GRAND CHAMPION NJS-LOUISVILLE 1981