

LOT# 40 \$ _____

MAPLE BUD ANDRE WHIT

003082956

BORN: 09-14-03 TATTOO RE M71 TATTOO LE M71
BREEDER & OWNER: MARY & MARK ERLANDSON
MAPLE BUD FARM
N5718 530TH ST
ELLSWORTH WI 54011
715-273-3680

SELLING OPEN

PA: -3M +.03% +4F +3\$ +.02% +3P +8P\$ +12CY\$
PTAT +0.4

MAPLE BUD FAVRE ANDRE 000604834
PA: -59M +.08% +9F +2\$ +.01% +1P +6P\$ +9CY\$
PTAT +0.7
ST SR DF BD FA RL RA TW
+0.9 +0.8 +0.2 +0.9 S0.5 P0.8 L0.6 +0.6
FU RW RH TP TL UC UD
+1.4 +0.7 +1.1 C0.6 +0.8 +0.1 S0.6

MAPLE BUD JOSH WYLY 003078592
02/04 USDA PTA +54M -0.02% -1F +3\$ +15CY\$ 23% REL
PROT +0.02% +5P +11P\$ 22%ILE P\$
02/04 USDA PPA -220M -14F -28\$ +5P -8P\$ +5CY\$
1 REC YD -1350M -39F -135\$ -25P -123P\$ -108CY\$

JENS GOLD LOGIC FAVRE 000603852 (001G0412)
02/04 USDA PTA +185M -0.02% +5F +18\$ +16CY\$ 66% REL
PROT -0.02% +4P +18P\$ 66% REL
AGA 02-04 PTAT +1.8 54% REL

MAPLE BUD LANCE ANDREA 002998042 90 @ 7-08
02/04 USDA PTA -303M +0.17% +12F -14\$ +1CY\$ 61% REL
PROT +0.04% -3P -6P\$ 42%ILE P\$
5 REC YD -311M +52F +18\$ +5P +42P\$ +58CY\$
2 APP 02-04 PTAT -0.4 51% REL
4-04 305D 2X 15340M 4.8% 733F 3.4% 527P DHIA

MAPLE BUD PERFECTO JOSH 000604742
PA: +115M -.02% +2F +10\$ +.02% +6P +17P\$ +20CY\$
PTAT +0.7

MAPLE BUD CARTER LYNN 003067296
02/04 USDA PTA +100M -0.04% -2F +6\$ +33CY\$ 41% REL
PROT +0.05% +11P +24P\$ 33%ILE P\$
02/04 USDA PPA -542M +4F -38\$ +25P +36P\$ +84CY\$
1 REC YD -2468M +23F -171\$ +35P +12P\$ +135CY\$

LOT# 41 \$ _____

ROLLANDIA IRON MAN PRAYER

003082512

BORN: 04-24-03 TATTOO RE 389 TATTOO LE 389
BREEDER & OWNER: HARRY & MARGARET SWYERS & FAMILY
ROLLANDIA GUERNSEYS
995 85TH AVE
AMERY WI 54001
608-268-2405

SELLING OPEN

PA: +273M -.02% +8F +27\$ +.02% +11P +35P\$ +39CY\$
PTAT -0.4
ST SR DF BD FA RL RA TW
-0.9 -0.2 -0.1 -0.3 L0.2 S0.2 H1.5 -0.1
FU RW RH TP TL UC UD
-0.7 +1.0 -0.4 W0.3 -0.2 +0.6 D1.5

OCS DAIRY DIAS IRON MAN-ET 000603158 (007G0356)
02/04 USDA PTA +1228M -0.26% +12F +104\$ +93CY\$ 83% REL
PROT -0.08% +27P +102P\$ 83% REL
AGA 02-04 PTAT -0.5 78% REL PTI +64
ST SR DF BD FA RL RA TW
+2.5 +1.0 +1.6 +1.0 S0.1 S0.2 H2.0 +1.4
FU RW RH TP TL UC UD
-2.5 +1.5 -0.6 W2.1 +1.1 +0.5 D3.4

SOLUM GRAND HENRY 000600174 (007G0331)
02/04 USDA PTA +351M -0.22% -19F +12\$ -26CY\$ 98% REL
PROT -0.09% -3P -10P\$ 98% REL
AGA 02-04 PTAT +0.6 97% REL

OCS DAIRY DAISYS DIADORA 002972606 94 @ 8-00
02/04 USDA PTA +1355M -0.23% +21F +121\$ +103CY\$ 81% REL
PROT -0.1% +28P +115P\$ 58%ILE P\$
4 REC YD +3467M +77F +328\$ +85P +339P\$ +325CY\$
1 APP 02-04 PTAT +0.3 63% REL
7-05 365D 2X 37630M* 4.6% 1745F* 3.4% 1277P* DHIR

ROLLANDIA HARPOON PASSOVER 003056231 82 @ 4-08(84/78)
02/04 USDA PTA -682M +0.23% +3F -50\$ -15CY\$ 61% REL
PROT +0.11% -6P -31P\$ 21%ILE P\$
02/04 USDA PPA -1808M +17F -125\$ -17P -76P\$ -37CY\$
4 REC YD -1896M +10F -138\$ -23P -97P\$ -61CY\$
4 APP 02-04 PTAT -0.2 57% REL CPI -16
2-00 223D 2X 6730M 6.4% 430F 4.0% 272P DHI
2-11 289D 2X 9200M 6.8% 622F 3.9% 360P DHI
3-11 305D 2X 10290M 6.0% 616F 3.9% 402P DHI

ST SR BD DF RA TW RL FA FU RH RW UC UD TP TL
24 34 35 25 23 30 30 24 34 28 30 25 28 28 28

WISPRIDE PENDER HARPOON-ET 000600972 (021G0353)
02/04 USDA PTA +16M +0.09% +14F +12\$ +56CY\$ 95% REL
PROT +0.08% +14P +40P\$ 95% REL
AGA 02-04 PTAT +0.1 94% REL

ROLLANDIA AMBIIONIC PATRICIA 003049782 76 @ 3-07
02/04 USDA PTA -433M +0.16% +5F -29\$ -5CY\$ 59% REL
PROT +0.08% -3P -15P\$ 16%ILE P\$
02/04 USDA PPA -1763M -22F -153\$ -30P -132P\$ -109CY\$
3 REC YD -1096M +10F -76\$ -7P -40P\$ -12CY\$
2 APP 02-04 PTAT -0.5 52% REL
1-11 264D 2X 6540M 5.3% 348F 4.1% 265P DHIR
2-11 244D 2X 6820M 4.9% 336F 4.0% 272P DHIR

ROLLANDIA SABER PAX VOBISCUM PTA -38\$ 80 @ 3-05

LOT# 42 \$ _____

JARIS HILLS G KATHY 003084629

BORN: 01-11-04 TATTOO LE J86H
BREEDER & OWNER: JAMES & DORIS BOLLECH
1318 SCHWEIZER RD
ATHENS WI 54411
715-257-7641

SELLING OPEN

ROZELYN PATMAR JAY GLACIER-ET 000602961 (007G0343)

02/04 USDA PTA +686M +0.13% +52F +94\$ +152CY\$ 86% REL
PROT +0.08% +35P +133P\$ 86% REL
AGA 02-04 PTAT +0.9 75% REL PTI +182
ST SR DF BD FA RL RA TW
+0.9 +0.7 +1.1 +0.8 S0.1 P0.1 H1.2 +0.4
FU RW RH TP TL UC UD
-0.2 +1.6 +1.0 C0.1 -1.9 +0.2 S0.3

ROZELYN PRINCE JAY-ET 000600064 (021G0332)

02/04 USDA PTA +582M +0.08% +38F +75\$ +160CY\$ 98% REL
PROT +0.13% +41P +130P\$ 98% REL
AGA 02-04 PTAT -0.9 98% REL

ROZELYN PATMAR P GINA-ET 003010608 90 @ 3-07

02/04 USDA PTA +223M +0.24% +47F +55\$ +133CY\$ 79% REL
PROT +0.14% +30P +105P\$ 98% ILE P\$
2 REC YD +1042M +144F +195\$ +106P +360P\$ +451CY\$
2 APP 02-04 PTAT +0.9 69% REL
3-05 365D 2X 22460M 5.4% 1217F 4.2% 951P DHIR

GR-SCHULZLANDS T KATELYN 003084628

2-03 305D 2X 12075M 4.3% 511F 3.1% 387P OS
3-04 36D 2X 1912M 4.6% 88F 3.2% 61P RIP
305D 12992M 567F 409P PROJ ACT OS

SPRING WALK KARIS TRUMPET 000601647 (001G0368)

02/04 USDA PTA +1910M -0.17% +55F +191\$ +177CY\$ 97% REL
PROT -0.12% +43P +189P\$ 97% REL
AGA 02-04 PTAT -0.4 97% REL

PR-SCHULZLANDS MAGIC LINDA 376011139

LOT# 43 \$ _____

SKY TOP JB NAOMI 003084496

BORN: 08-08-03
BREEDER & OWNER: TONY GALGOWSKI
W8114 830TH AVE
RIVER FALLS WI 54022
715-425-7093

SELLING OPEN

PA: +1015M -0.02% +41F +110\$ -0.02% +30P +123P\$ +124CY\$
PTAT +1.2

ST SR DF BD FA RL RA TW
+0.4 +0.6 +1.8 +1.4 L0.1 S0.2 H0.9 +0.6
FU RW RH TP TL UC UD
-0.1 +1.8 +1.8 C1.0 -0.1 +1.1 D0.7

ROYAL ACRES ENHANCER JB 000603423 (001G0405)

02/04 USDA PTA +1247M -0.02% +51F +137\$ +166CY\$ 81% REL
PROT 0.0% +40P +159P\$ 81% REL
AGA 02-04 PTAT +1.7 76% REL PTI +212
ST SR DF BD FA RL RA TW
+1.5 +0.1 +3.7 +1.6 L0.3 S0.1 H0.7 +0.8
FU RW RH TP TL UC UD
-0.2 +3.2 +3.2 C1.4 -0.6 +1.5 D1.3

SHERMA VICTORY ELLAS ENHANCER 000600510 (029G0918)

02/04 USDA PTA +1353M -0.04% +54F +147\$ +129CY\$ 97% REL
PROT -0.1% +28P +141P\$ 97% REL
AGA 02-04 PTAT +1.9 97% REL

ROYAL ACRES PENDER JESSICA-ET 003027561 87 @ 2-10

02/04 USDA PTA +555M -0.02% +21F +59\$ +76CY\$ 61% REL
PROT 0.0% +19P +72P\$ 38% ILE P\$
1 REC YD +366M -178F -114\$ -3P -137P\$ -153CY\$
2 APP 02-04 PTAT +1.4 59% REL
2-01 305D 2X 22050M 3.3% 736F 3.2% 696P DHIA

TROTACRE MERCURY LORRY-ET 000602120 (014G0258)

02/04 USDA PTA +1403M -0.02% +58F +154\$ +142CY\$ 97% REL
PROT -0.09% +31P +152P\$ 97% REL
AGA 02-04 PTAT +0.7 97% REL

MAPLE GROVE LORRY NANCY 003067227 73 @ 3-02(73/82)

1-11 365D 2X 24510M 4.3% 1046F 2.9% 714P DHI
ST SR BD DF RA TW RL FA FU RH RW UC UD TP TL
20 18 20 43 19 20 30 25 15 30 35 35 13 16 27

MAPLE GROVE CARTER NELLA 003043944 80 @ 3-11

02/04 USDA PTA +163M -0.03% +2F +14\$ +24CY\$ 48% REL
PROT +0.01% +7P +21P\$ 50% ILE P\$
3 REC YD +363M +16F +41\$ +16P +56P\$ +63CY\$
2 APP 02-04 PTAT +0.4 47% REL
2-04 251D 2X 9460M 4.7% 446F 3.5% 331P DHIR
3-04 305D 2X 15200M 4.3% 655F 3.5% 529P DHI

THIRD DAM: MAPLE GROVE PERFECTO NINA 88 @ 6-08

FOURTH DAM: MAPLE GROVE ADMIRAL NANCY 86 @ 4-09

FIFTH DAM: MAPLE GROVE CAPTAIN MOEL 90 @ 5-06

LOT# 44 \$ _____

JENS GOLD GLACIER AMAZING 003084650

BORN: 12-27-03
BREEDER & OWNER: JENS GOLD FARMS
DALE & LYLE JENSEN
1308 80TH ST
AMERY WI 54001
715-268-8711

SELLING OPEN
JOHNES VACCINATE

PA: +739M +0.07% +45F +92\$ +0.02% +28P +114P\$ +122CY\$
PTAT +0.5
ST SR DF BD FA RL RA TW
+0.4 +0.5 +0.8 +0.9 S0.1 S0.1 H0.2 +0.1
FU RW RH TP TL UC UD
-0.4 +0.8 +0.6 C0.2 -1.6 +0.5 S0.1

ROZELYN PATMAR JAY GLACIER-ET 000602961 (007G0343)
02/04 USDA PTA +686M +0.13% +52F +94\$ +152CY\$ 86% REL
PROT +0.08% +35P +133P\$ 86% REL
AGA 02-04 PTAT +0.9 75% REL PTI +182
ST SR DF BD FA RL RA TW
+0.9 +0.7 +1.1 +0.8 S0.1 P0.1 H1.2 +0.4
FU RW RH TP TL UC UD
-0.2 +1.6 +1.0 C0.1 -1.9 +0.2 S0.3

JENS GOLD FARO AMARILLA 003068132 83 @ 3-02 (81/84)
11/03 USDA PTA +792M +0.01% +37F +90\$ +92CY\$ 49% REL
PROT -0.04% +20P +94P\$ 79%ILE P\$
11/03 USDA PPA +2728M +104F +293\$ +60P +288P\$ +268CY\$
1 REC YD +3184M +120F +341\$ +61P +317P\$ +283CY\$
2 APP 02-04 PTAT +0.1 50% REL CPI +106
2-01 365D 2X 19300M 4.4% 852F 3.1% 590P DHI

ST SR BD DF RA TW RL FA FU RH RW UC UD TP TL
30 28 38 29 20 28 25 20 27 29 22 27 34 25 17

ROZELYN PRINCE JAY-ET 000600064 (021G0332)
02/04 USDA PTA +582M +0.08% +38F +75\$ +160CY\$ 98% REL
PROT +0.13% +41P +130P\$ 98% REL
AGA 02-04 PTAT -0.9 98% REL

ROZELYN PATMAR P GINA-ET 003010608 90 @ 3-07
02/04 USDA PTA +223M +0.24% +47F +55\$ +133CY\$ 79% REL
PROT +0.14% +30P +105P\$ 98%ILE P\$
2 REC YD +1042M +144F +195\$ +106P +360P\$ +451CY\$
2 APP 02-04 PTAT +0.9 69% REL
3-05 365D 2X 22460M 5.4% 1217F 4.2% 951P DHIR

TWIN L FARMS MAGIC FARO-ET 000602410 (009G0136)
02/04 USDA PTA +1020M -0.11% +27F +100\$ +105CY\$ 89% REL
PROT -0.04% +27P +107P\$ 89% REL
AGA 02-04 PTAT +0.2 84% REL

JENS GOLD BILLY ARILLA 003049508 80 @ 2-09
02/04 USDA PTA +93M +0.17% +31F +32\$ +53CY\$ 58% REL
PROT +0.04% +9P +46P\$ 56%ILE P\$
02/04 USDA PPA +13M +80F +65\$ +30P +124P\$ +160CY\$
2 REC YD -188M +75F +46\$ +23P +100P\$ +134CY\$
2 APP 02-04 PTAT -0.4 54% REL
2-03 352D 2X 15891M 5.0% 954F 3.4% 638P DHI

THIRD DAM: LEVEL GOLD PROKING ARIANNE 80 @ 5-05
6-01 305D 2X 18500M 5.2% 954F 3.4% 638P DHI
FOURTH DAM: LEVEL GOLD ABLE ANGELA 85 @ 5-01
FIFTH DAM: LEVEL GOLD QUANTITYS ANGIE 84 @ 5-04
5-01 335D 2X 17860M 5.2% 927F DHI

LOT # 45 \$ _____

MARSHALLANE HAWK DISCO 003083845

BORN: 07-28-03 TATTOO RE A421TATTOO LE A421
BREEDER & OWNER: HANSEN FARMS
W8450 COUNTY HWY A
NEW LISBON WI 53950
608-562-5251

SELLING OPEN

PA: +898M +0.01% +42F +102\$ +0.01% +32P +124P\$ +132CY\$
PTAT +0.7
ST SR DF BD FA RL RA TW
0.0 -0.3 +0.5 -0.3 S0.1 0.0 H1.0 -0.4
FU RW RH TP TL UC UD
-0.6 0.0 -0.1 W0.2 -1.1 +0.2 D0.5

JENS GOLD G HAWK-TWIN 000604445 (007G0391)
PA: +1224M +0.06% +63F +144\$ +0.03% +44P +176P\$ +188CY\$
PTAT +1.3
ST SR DF BD FA RL RA TW
+1.2 +1.1 +1.8 +1.5 S0.3 S0.1 H0.3 +1.0
FU RW RH TP TL UC UD
+0.5 +2.4 +1.8 C0.8 -0.5 +0.8 D0.4

MARSHALLANE HOT SHOT DEW 003062272 78 @ 4-05
02/04 USDA PTA +573M -0.03% +20F +60\$ +75CY\$ 54% REL
PROT 0.0% +19P +72P\$ 71%ILE P\$
3 REC YD +1431M +67F +164\$ +55P +208P\$ +226CY\$
3 APP 02-04 PTAT +0.1 53% REL CPI +77
2-02 305D 2X 15620M 4.6% 717F 3.4% 525P DHI
3-03 305D 2X 17190M 4.7% 813F 3.3% 573P DHI

ST SR BD DF RA TW RL FA FU RH RW UC UD TP TL
29 16 18 37 15 17 11 02 27 30 26 07 16 13

2 NEGATIVE JOHNES TESTS

ROZELYN PATMAR JAY GLACIER-ET 000602961 (007G0343)
02/04 USDA PTA +686M +0.13% +52F +94\$ +152CY\$ 86% REL
PROT +0.08% +35P +133P\$ 86% REL
AGA 02-04 PTAT +0.9 75% REL

JENS GOLD VELOUR HANES 003054648 84 @ 1-11
02/04 USDA PTA +1761M -0.02% +74F +194\$ +224CY\$ 57% REL
PROT -0.03% +53P +220P\$ 98%ILE P\$
3 REC YD +4123M +209F +484\$ +139P +573P\$ +601CY\$
4 APP 02-04 PTAT +1.7 57% REL

MYRTLEDALES MAGIC HOT SHOT-ET 000602097 (001G0381)
02/04 USDA PTA +1418M -0.11% +44F +144\$ +163CY\$ 96% REL
PROT -0.04% +41P +161P\$ 96% REL
AGA 02-04 PTAT 0.0 95% REL

MARSHALLANE CHAMP DEWDROP 003035187 85 @ 3-04
02/04 USDA PTA -510M -0.02% -26F -60\$ -77CY\$ 57% REL
PROT -0.01% -18P -73P\$ 03%ILE P\$
3 REC YD -1756M -61F -184\$ -64P -231P\$ -249CY\$
2 APP 02-04 PTAT -0.1 50% REL
2-02 285D 2X 12330M 4.4% 543F 3.3% 403P DHIR
3-02 305D 2X 14100M 4.6% 650F 3.4% 485P DHIR

LOT# 46 \$**CROSS LEA ONWARD ROXY 003077350**

BORN: 05-14-02 TATTOO RE C375
 BREEDER & OWNER: GENE CROSS & FAMILY
 CROSS LEA GUERNSEYS
 437 80TH ST
 SHERBURN MN 56171
 507-695-2923

BRED: 10-24-03 DUE: 08-04-04
 TROTACRE ENHANCER TYLER-ET 000603340 (009G0148)
 02/04 USDA PTA +1389M -0.12% +41F +139\$ +132CY\$ 71% REL
 PROT -0.08% +32P +140P\$ 71% REL
 AGA 02-04 PTAT +1.9 67% REL PTI +184
 SHERMA VICTORY ELLAS ENHANCER 000600510 (029G0918)
 GREENWOOD M TILLIE-ET 003013942 90 @ 3-03

PA: +197M +0.2% +12F +24\$ -.04% +1P +17P\$ +12CY\$
 PTAT +0.4
 ST SR DF BD FA RL RA TW
 -0.4 +0.2 -0.9 +0.1 L0.2 P0.1 L0.4 -0.1
 FU RW RH TP TL UC UD
 +0.6 -0.6 -0.5 C0.1 +0.2 -0.3 S0.5

MYRTLEDALES SMOKEY HORNET-ET 000601905 (007G0319)
 02/04 USDA PTA +560M -0.02% +21F +60\$ +38CY\$ 86% REL
 PROT -0.07% +7P +48P\$ 86% REL
 AGA 02-04 PTAT +1.2 79% REL

MEADOW CREEK HORNET ONWARD 000604020
 PA: +602M +0.1% +28F +68\$ -.06% +10P +61P\$ +53CY\$
 PTAT +0.9
 ST SR DF BD FA RL RA TW
 +2.7 +1.2 +1.6 +1.1 S0.5 S0.4 H0.5 +1.5
 FU RW RH TP TL UC UD
 +0.7 +1.4 +1.4 C0.5 +0.5 -0.2 D0.3

MEADOW CREEK FRANKS ILA 003015748 92 @ 7-01
 02/04 USDA PTA +644M +0.03% +34F +77\$ +67CY\$ 60% REL
 PROT -0.05% +13P +73P\$ 82%ILE P\$
 4 REC YD +1893M +126F +246\$ +47P +253P\$ +246CY\$
 3 APP 02-04 PTAT +0.6 54% REL
 4-01 305D 2X 23273M 7.1% 1643F* 3.3% 765P DHIA

RAINBOW ACRES LORAL JILL 003059706 79 @ 4-00(81/78)
 02/04 USDA PTA -209M +0.03% -4F -19\$ -28CY\$ 44% REL
 PROT -0.01% -8P -26P\$ 08%ILE P\$
 1 REC YD -160M +2F -11\$ -43P -89P\$ -135CY\$
 1 APP 02-04 PTAT -0.1 39% REL CPI -28
 3-03 305D 2X 13700M 4.6% 634F 3.4% 463P DHIA
 ST SR BD DF RA TW RL FA FU RH RW UC UD TP TL
 31 32 30 12 21 23 32 31 31 28 33 27 33 27 21

TROTACRE MERCURY LORAL-ET 000602121 (007G0322)
 02/04 USDA PTA +385M -0.03% +13F +40\$ +41CY\$ 96% REL
 PROT -0.01% +10P +42P\$ 96% REL
 AGA 02-04 PTAT +1.5 95% REL

THIRD DAM: RAINBOW ACRES FAYETTE JULIE 88 @ 7-08

RAINBOW ACRES AGATE JOSIE 002993029 87 @ 9-03
 02/04 USDA PTA -813M +0.09% -23F -81\$ -64CY\$ 38% REL
 PROT +0.08% -15P -74P\$ 06%ILE P\$
 1 APP 02-04 PTAT -1.4 35% REL
 3-04 229D 2X 9150M 3.7% 340F 3.7% 338P DHIA
 4-04 269D 2X 10610M 4.3% 451F 3.7% 396P DHIA
 5-05 247D 2X 11090M 4.8% 534F 3.8% 421P DHIA
 6-05 222D 2X 10440M 4.1% 428F 3.6% 378P DHIA
 7-04 305D 2X 14050M 4.0% 562F 3.6% 512P DHIR
 8-05 252D 2X 10700M 4.4% 469F 3.6% 385P DHIA
 9-04 289D 2X 11950M 5.2% 622F 3.6% 432P DH
 10-05 278D 2X 8410M 4.4% 366F 3.5% 298P DH
 11-05 270D 2X 10180M 4.1% 413F 3.3% 337P DH
 RAINBOW ACRES SHARP JOAN PTA +5\$
 3-06 296D 2X 15210M 4.7% 714F 3.6% 550P DH
 RAINBOW ACRES LORAL JILL PTA -19\$ 79 @ 4-00(81/78)
 3-03 347D 2X 14470M 4.7% 680F 3.4% 494P DH
 RAINBOW ACRES FELIX JOYCE 84 @ 6-02(86/79)

LOT# 47 \$**GR-KNAPPS PENSION DAISY 003071873**

BORN: 03-30-01 TATTOO RE K294TATTOO LE K294
 BREEDER: RANDY KNAPP & FAMILY
 EPWORTH IA 52045
 OWNER: ZACHARY HOLST
 26547 665TH AVE
 DEXTER MN 55926
 507-584-6411

BRED: 09-01-03 DUE: 06-12-04
 TROTACRE LORAL TILLER-ET 000603341

LILY LANE T PENNY PENSION-ET 000601295 (001G0355)
 02/04 USDA PTA +434M -0.12% +1F +34\$ +76CY\$ 95% REL
 PROT +0.06% +24P +62P\$ 95% REL
 AGA 02-04 PTAT -0.3 92% REL PTI +45
 ST SR DF BD FA RL RA TW
 -1.2 +0.1 -0.3 -0.7 L0.2 S0.7 H4.1 +0.3
 FU RW RH TP TL UC UD
 -0.2 +1.4 +0.1 W1.0 +2.9 +0.1 D1.2

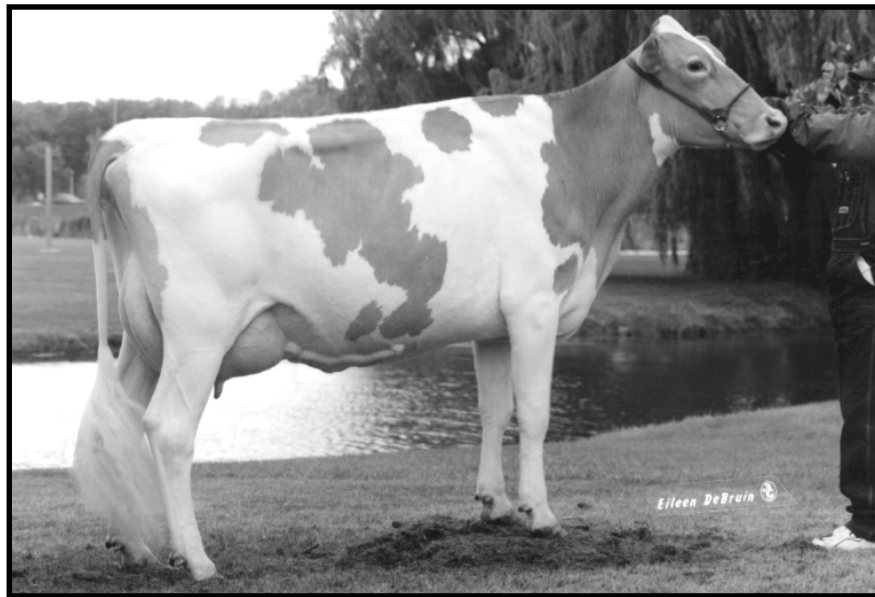
KELLOGG E CHOICE PENDER 000592570 (007G0179)
 02/04 USDA PTA +289M -0.03% +8F +29\$ +44CY\$ 99% REL
 PROT +0.02% +12P +39P\$ 99% REL
 AGA 02-04 PTAT +0.2 98% REL

PR-KNAPPS SLYMER TULIP 376010563

LILY LANE TEX PENNY-ET 002883494 90 @ 3-11
 02/04 USDA PTA +436M -0.07% +8F +40\$ +37CY\$ 84% REL
 PROT -0.03% +10P +40P\$ 37%ILE P\$
 4 REC YD +1207M +37F +122\$ +21P +109P\$ +94CY\$
 2 APP 02-04 PTAT -0.1 71% REL
 4-09 305D 2X 22120M 4.1% 897F 3.4% 747P DHIA

BLOSSUM HILL P ANDY SLYMER-ET 000599798 (001G0183)
 02/04 USDA PTA -354M +0.04% -9F -34\$ -45CY\$ 90% REL
 PROT 0.0% -12P -42P\$ 90% REL
 AGA 02-04 PTAT +0.6 87% REL

GT-KNAPPS POPPIE 365010956



Rainbow Acres Enhancer Jewel VG-86
Granddam of Lot #48

LOT# 48 \$ _____

IDLE NEER MAXIMUM JOURNEY

003073970

BORN: 08-16-01 TATTOO RE S215TATTOO LE S215
BREEDER & OWNER: STEVE SYWASSINK
IDLE NEER FARMS
PO BOX 393
GRANDVIEW IA 52752
319-729-4921

BRED: 08-28-00 DUE: 06-09-01
IDLE NEER CHARLIE 000604854
PA: +962M -.02% +40F +106\$ -.07% +20P +102P\$ +94CY\$
PTAT 0.0
TROTACRE MERCURY LORRY-ET 000602120 (014G0258)
IDLE NEER GOLIATH CHRIS 003039718 80 @ 4-05

PA: +380M +.07% +28F +51\$ -.01% +12P +58P\$ +59CY\$
PTAT +0.7
ST SR DF BD FA RL RA TW
-0.3 -0.3 +0.1 +0.1 L0.1 S0.1 H0.1 -0.5
FU RW RH TP TL UC UD
+1.1 0.0 +0.6 C1.0 -0.6 +1.2 S1.6

TROTACRE MERCURY LORRY-ET 000602120 (014G0258)
02/04 USDA PTA +1403M -0.02% +58F +154\$ +142CY\$ 97% REL
PROT -0.09% +31P +152P\$ 97% REL
AGA 02-04 PTAT +0.7 97% REL

LUDLOW ACRES LORRY MAXIMUM-ET 000603827 (007G0376)
02/04 USDA PTA +804M +0.07% +47F +99\$ +122CY\$ 57% REL
PROT 0.0% +27P +117P\$ 57% REL

CANNIFF VALOR MAY 003039655 87 @ 2-11
02/04 USDA PTA +459M +0.11% +37F +65\$ +96CY\$ 68% REL
PROT +0.04% +21P +86P\$ 80%ILE P\$
2 REC YD +2846M +165F +351\$ +102P +424P\$ +451CY\$
2 APP 02-04 PTAT +1.3 58% REL
1-11 365D 3X 22169M 4.8% 1055F 3.6% 795P DHIR

RAINBOW ACRES SHARP JENNA 003053784 88 @ 5-01(90/82)
02/04 USDA PTA -44M +0.06% +8F +3\$ -3CY\$ 60% REL
PROT -0.01% -3P -1P\$ 33%ILE P\$
02/04 USDA PPA -1931M -28F -171\$ -49P -180P\$ -174CY\$
4 REC YD -830M +1F -63\$ -23P -71P\$ -71CY\$
3 APP 02-04 PTAT +1.3 54% REL CPI +59
2-05 305D 2X 10600M 4.7% 503F 3.5% 374P DHI
3-07 364D 2X 14270M 5.6% 802F 3.8% 544P DHI
4-08 304D 2X 12360M 5.6% 694F 3.9% 479P DHI

TAG LANE IDEAL SHARP-ET 000601474 (001G0201)
02/04 USDA PTA +596M -0.04% +20F +62\$ +62CY\$ 97% REL
PROT -0.03% +15P +64P\$ 97% REL
AGA 02-04 PTAT +1.8 96% REL

ST SR BD DF RA TW RL FA FUR RH RW UC UD TP TL
24 28 32 38 20 25 30 18 40 37 28 33 32 38 25

RAINBOW ACRES ENHANCER JEWEL 003040906 86 @ 3-08
02/04 USDA PTA +351M +0.01% +18F +41\$ +33CY\$ 58% REL
PROT -0.04% +6P +37P\$ 47%ILE P\$
02/04 USDA PPA +833M +42F +98\$ +11P +81P\$ +67CY\$
3 REC YD +807M +41F +95\$ +11P +80P\$ +66CY\$
2 APP 02-04 PTAT +1.2 49% REL
2-04 305D 2X 13330M 4.0% 529F 3.5% 473P DHIR
3-06 305D 2X 16790M 4.3% 719F 3.5% 595P DHI

IDLE NEER RAIN LUCK JANIS PTA +42\$ 75 @ 3-05(74/78)

HM ALL-AMERICAN SR. 2-YEAR-OLD 1998
3RD SR 2-YEAR-OLD NGS-MADISON 1998
4TH SR CALF NGS-MADISON 1996

LOT# 49 \$

BORN: 02-19-02 TATTOO RE S229TATTOO LE S229
 BREEDER & OWNER: DONALD SYWASSINK
 IDLE NEER FARMS
 PO BOX 393
 LETTS IA 52752
 319-729-4921

PA: +1102M +.02% +52F +126\$ -.05% +28P +132P\$ +129CY\$
 PTAT +0.7
 ST SR DF BD FA RL RA TW
 -0.5 -0.8 +0.2 -0.6 L0.4 S0.1 0.0 -0.4
 FU RW RH TP TL UC UD
 +0.2 +0.3 +0.5 0.0 +0.2 +0.1 S0.4

COULEE CREST TRUMPET SUNSET-ET 000603955 (007G0374)

PA: +1869M -.03% +78F +206\$ -.1% +46P +211P\$ +203CY\$
 PTAT +1.0
 ST SR DF BD FA RL RA TW
 +3.0 +0.9 +2.8 +1.5 L0.1 S0.8 L1.2 +1.8
 FU RW RH TP TL UC UD
 -0.8 +2.0 +1.7 C0.5 -1.2 +0.3 D2.0

IDLE NEER HUNTER ESTELLA-TWIN 003047346 77 @ 4-11

05/01 USDA PTA +335M +0.07% +26F +47\$ +55CY\$ 51% REL
 PROT 0.0% +11P +53P\$ 71%ILE P\$
 05/01 USDA PPA +489M +58F +84\$ +14P +90P\$ +90CY\$
 2 REC YD +570M +52F +85\$ +9P +77P\$ +69CY\$
 2 APP 02-04 PTAT +0.5 51% REL CPI +85
 2-10 365D 2X 16580M 4.8% 799F 3.6% 595P DHI
 4-04 305D 2X 15730M 4.9% 764F 3.4% 537P DHI

ST SR BD DF RA TW RL FA FU RH RW UC UD TP TL
 24 22 26 28 16 24 21 18 29 35 21 12 21 26 34

THIRD DAM: IDLE NEER LANCE ELLIE 84 @ 4-04

8-11 358D 2X 17380M 4.7% 810F 3.3% 571P DHI

FOURTH DAM: IDLE NEER R H ESTHER 89 @ 4-06

4-08 365D 2X 19110M 4.7% 892F DHIR

LOT# 50 \$

BORN: 09-15-01 TATTOO LE C14
 BREEDER: SUNNY BROOK GUERNSEY
 BANGOR WI 54614
 OWNER: JON LANTZ
 N5683 530TH ST
 ELLSWORTH WI 54011
 715-273-6074

PA: +423M +.07% +29F +56\$ -.02% +11P +58P\$ +57CY\$
 PTAT +0.8
 ST SR DF BD FA RL RA TW
 +1.9 +0.6 +1.0 +0.6 S0.3 S0.1 H0.9 +1.2
 FU RW RH TP TL UC UD
 +0.6 +1.2 +1.2 W0.4 +1.1 +0.5 S0.2

BIG SPRING ROGER 040020213

11/02 USDA PTA +172M -0.02% +4F +16\$ +3CY\$ 86% REL
 PROT -0.03% 0P +9P\$ 83% REL
 AGA 02-04 PTAT +1.6 63% REL PTI +56
 ST SR DF BD FA RL RA TW
 +3.7 +1.1 +1.9 +1.1 S0.5 S0.1 H1.8 +2.4
 FU RW RH TP TL UC UD
 +1.2 +2.3 +2.3 W0.8 +2.2 +0.9 S0.3

MAPLE GROVE LORRY COLLIE 003061205

02/04 USDA PTA +673M +0.15% +54F +95\$ +112CY\$ 48% REL
 PROT 0.0% +22P +108P\$ 82%ILE P\$
 02/04 USDA PPA +1407M +130F +212\$ +46P +240P\$ +248CY\$
 2 REC YD +1187M +144F +206\$ +48P +248P\$ +266CY\$
 2-02 303D 2X 12780M 5.6% 722F 3.7% 472P DHI

IDLE NEER SUNSET ESTELL 003077295

BRED: 10-31-03 DUE: 08-11-04
 PENNY LANE ROYAL OAK TURLEY 000604633 (007G0394)
 PA: +1339M -.05% +51F +143\$ -.03% +40P +162P\$ +165CY\$
 PTAT +1.6 PTI +107
 JENSGOLDEN PROKING ROYAL OAK 000602216 (007G0330)
 BLA ARL PREPPYS VALOR PRECIOUS-ET 003065299 85 @ 3-01

SPRING WALK KARIS TRUMPET 000601647 (001G0368)

02/04 USDA PTA +1910M -0.17% +55F +191\$ +177CY\$ 97% REL
 PROT -0.12% +43P +189P\$ 97% REL
 AGA 02-04 PTAT -0.4 97% REL

COULEE CREST ENHANCER SNOW-ET 003050736 88 @ 2-08

02/04 USDA PTA +1827M +0.12% +101 +221\$ +230CY\$ 66% REL
 PROT -0.07% +48P +233P\$ 99%ILE P\$
 1 REC YD +3644M +325F +540\$ +110P +593P\$ +603CY\$
 1 APP 02-04 PTAT +2.3 57% REL
 2-01 365D 2X 21059M 6.3% 1319F 3.7% 784P DHIR

JENSGOLDEN VICTORY HUNTER 000600924 (029G0924)

02/04 USDA PTA +896M -0.05% +32F +94\$ +142CY\$ 95% REL
 PROT +0.05% +37P +127P\$ 95% REL
 AGA 02-04 PTAT +1.3 93% REL

IDLE NEER IDEAL ELLIEMAY 002998048 85 @ 3-07

02/04 USDA PTA -188M +0.18% +20F +2\$ -9CY\$ 66% REL
 PROT -0.01% -8P -6P\$ 35%ILE P\$
 3 REC YD -212M +64F +35\$ -12P +21P\$ +13CY\$
 2 APP 02-04 PTAT +0.2 57% REL
 2-02 291D 2X 11430M 4.8% 547F 3.5% 395P DHIR
 3-02 305D 2X 13330M 4.8% 643F 3.6% 475P DHIR
 4-02 365D 2X 15750M 5.2% 815F 3.6% 571P DHIR

IDLE NEER PERFECTO ELLIEFAY PTA +19\$ 89 @ 5-06

4-04 305D 2X 14420M 4.7% 674F 3.6% 519P DHIR

IDLE NEER AMBIONIC ETHEL PTA -7\$ 72 @ 3-02

2-02 298D 2X 10610M 5.2% 548F 3.6% 383P DHIR

SUNNY BROOK ROGER CANDY 003076167

SELLING FRESH & OPEN

WILLOWS ADMIRAL JASPER 000598587 (009G0109)

02/04 USDA PTA -105M +0.06% +5F -4\$ -2CY\$ 97% REL
 PROT +0.01% -2P -3P\$ 97% REL
 AGA 02-04 PTAT +0.9 96% REL

BIG SPRING VICTORY ROSE 040194553**TROTACRE MERCURY LORRY-ET 000602120 (014G0258)**

02/04 USDA PTA +1403M -0.02% +58F +154\$ +142CY\$ 97% REL
 PROT -0.09% +31P +152P\$ 97% REL
 AGA 02-04 PTAT +0.7 97% REL

MAPLE GROVE OAK CARRIE 003038845 86 @ 3-02

05/01 USDA PTA -184M +0.23% +27F +7\$ +38CY\$ 46% REL
 PROT +0.07% +5P +26P\$ 71%ILE P\$
 05/01 USDA PPA -1095M +52F -42\$ -7P -6P\$ +22CY\$
 2 REC YD -1427M +68F -55\$ -11P -12P\$ +22CY\$
 2 APP 02-04 PTAT +0.5 50% REL
 2-04 305D 2X 10820M 5.8% 625F 3.9% 417P DHIR

THIRD DAM: MAPLE GROVE VICTORY CHARLIE 86 @ 7-02**FOURTH DAM: MAPLE GROVE BELL CORA 84 @ 4-08****FIFTH DAM: MAPLE GROVE JAY CELIA 85 @ 6-03****SIXTH DAM: GR-MAPLE GROVE MR D BETH 89 @ 6-04**

LOT# 51 \$ _____**IDLE NEER VALIANT TIFF 003077294**

BORN: 02-02-02 TATTOO RE S228TATTOO LE S228
 BREEDER & OWNER: DONALD SYWASSINK
 IDLE NEER FARMS
 PO BOX 393
 LETTS IA 52752
 319-729-4921

BRED: 11-19-03 DUE: 08-30-04
 LANTZ FARM RO RACERS RESPONSE-ET 000604530 (001G0423)
 PA: +792M +.07% +46F +97\$ -.02% +23P +107P\$ +108CY\$
 PTAT +1.1
 JENSGOLDEN PROKING ROYAL OAK 000602216 (007G0330)
 BREEZY POINT P RACER 003025568 92 @ 6-07

PA: +38M +.05% +10F +11\$ +.01% +3P +15P\$ +17CY\$
 PTAT +0.8
 ST SR DF BD FA RL RA TW
 +0.2 +0.2 +0.4 +0.3 S0.2 P0.1 L0.1 +0.4
 FU RW RH TP TL UC UD
 +0.8 +0.3 +1.2 C0.6 +0.1 +1.3 S1.7

TAMARACKS PERFECTOS VALIANT-ET 000602300 (009G0134)
 02/04 USDA PTA +41M +0.05% +10F +11\$ +14CY\$ 94% REL
 PROT 0.0% +2P +13P\$ 94% REL
 AGA 02-04 PTAT +1.8 92% REL PTI +68
 ST SR DF BD FA RL RA TW
 +2.0 +0.8 +1.6 +1.0 S0.4 S0.1 L1.1 +1.1
 FU RW RH TP TL UC UD
 +1.0 +1.0 +1.4 C1.6 -0.3 +1.8 S1.7

IDLE NEER SABER TIFFANY 003054394 80 @ 4-07
 02/04 USDA PTA +35M +0.05% +10F +11\$ +21CY\$ 60% REL
 PROT +0.02% +4P +17P\$ 42%ILE P\$
 02/04 USDA PPA -548M -6F -47\$ -11P -44P\$ -39CY\$
 3 REC YD -279M +11F -13\$ -2P -4P\$ +3CY\$
 3 APP 02-04 PTAT -0.3 55% REL CPI +12
 2-02 305D 2X 11530M 4.8% 559F 3.6% 412P DHI
 3-03 305D 2X 15100M 4.8% 718F 3.5% 532P DHI
 ST SR BD DF RA TW RL FA FU RH RW UC UD TP TL
 28 24 32 27 15 32 22 39 19 39 29 41 32 31 34

LILY LANE PENNY PERFECTO-ET 000598133 (021G0296)
 02/04 USDA PTA +275M -0.09% -2F +20\$ +30CY\$ 99% REL
 PROT +0.01% +10P +27P\$ 99% REL
 AGA 02-04 PTAT +1.5 99% REL

PIERCE FARMS A VALERIE 002958191 92 @ 3-11
 02/04 USDA PTA +434M -0.03% +15F +45\$ +40CY\$ 78% REL
 PROT -0.03% +9P +43P\$ 10%ILE P\$
 3 REC YD +2032M +88F +226\$ +65P +263P\$ +273CY\$
 3 APP 02-04 PTAT +1.6 70% REL
 3-07 365D 2X 28560M* 4.9% 1409F* 3.7% 1052P* DHIR

TAG LANE BUTTERMOST SABER 000601734 (009G0125)
 02/04 USDA PTA +437M +0.11% +36F +62\$ +101CY\$ 97% REL
 PROT +0.06% +23P +88P\$ 97% REL
 AGA 02-04 PTAT -0.6 97% REL

IDLE NEER MAGIC TINA 003014035 84 @ 5-00
 02/04 USDA PTA +108M -0.05% -3F +6\$ +1CY\$ 62% REL
 PROT -0.01% +1P +3P\$ 32%ILE P\$
 4 REC YD +308M -12F +14\$ +4P +8P\$ +2CY\$
 3 APP 02-04 PTAT +0.6 57% REL
 2-05 365D 2X 15160M 4.2% 644F 3.6% 541P DHIR
 3-10 301D 2X 14730M 4.3% 637F 3.7% 540P DHIR
 4-10 365D 2X 19250M 4.2% 802F 3.5% 675P DHIR
 6-01 305D 2X 15690M 3.9% 615F 3.4% 528P DHIA

THIRD DAM: PENNYRILE FAYETTE TERESA 83 @ 4-06
FOURTH DAM: PENNYRILE DANDY TONYA 81 @ 3-09

LOT #52 \$ _____**WRIGHTSTOCK BERT ROSEBUD 003048442**

BORN: 12-06-96 TATTOO RE W123
 BREEDER: MICAH EL WRIGHT
 MONDOVI WI 54755
 OWNER: MR & MRS JAMES ROLLI & FAMILY
 RT 1 BOX 168
 SPRING VALLEY MN 55975

FRESH: 10-04-03
 BRED 3-21-04 TO TROTACRE ENHANCER TYLER-ET 000603340

PA: -291M +.05% -5F -27\$ +.02% -7P -26P\$ -24CY\$
 PTAT +0.6
 ST SR DF BD FA RL RA TW
 +0.1 +0.1 +0.4 +0.5 L0.1 S0.1 H0.3 +0.2
 FU RW RH TP TL UC UD
 -0.4 +0.2 +0.2 C0.1 -0.2 +0.5 D0.6

WRIGHTSTOCK PERFECTO BERT 000603321
 PA: -317M +.04% -9F -31\$ +.04% -6P -29P\$ -25CY\$
 PTAT +0.8
 ST SR DF BD FA RL RA TW
 +0.8 +0.4 +0.5 +0.5 S0.6 P0.1 H0.4 -0.2
 FU RW RH TP TL UC UD
 +0.6 +0.2 +0.4 C0.1 +0.2 +0.6 S0.9

WRIGHTSTOCK SIMON ROSEMARIE 003048441
 PA: -265M +.06% -2F -22\$ +.01% -7P -24P\$ -23CY\$
 PTAT +0.5
 ST SR DF BD FA RL RA TW
 +0.3 +0.3 +0.8 +1.1 L0.2 S0.1 H0.5 +0.4
 FU RW RH TP TL UC UD
 -0.7 +0.4 +0.3 C0.2 -0.5 +1.1 D1.2

LILY LANE PENNY PERFECTO-ET 000598133 (021G0296)
 02/04 USDA PTA +275M -0.09% -2F +20\$ +30CY\$ 99% REL
 PROT +0.01% +10P +27P\$ 99% REL
 AGA 02-04 PTAT +1.5 99% REL

WRIGHTSTOCK VOLCANO BEAUTY 003048375
 02/04 USDA PTA -908M +0.17% -15F -82\$ -80CY\$ 36% REL
 PROT +0.06% -22P -84P\$ 10%ILE P\$

BLOSSUM HILL P ANDY SIMON-ET 000599797 (021G0321)
 02/04 USDA PTA -26M +0.06% +9F +5\$ -9CY\$ 97% REL
 PROT -0.03% -5P -4P\$ 97% REL
 AGA 02-04 PTAT +0.7 95% REL

WRIGHTSTOCK IDEAL ROSEMAE 003048440
 PA: -504M +.07% -13F -49\$ +.05% -9P -44P\$ -38CY\$
 PTAT +0.2