

LOT 9 OAK KNOB GUNNER FIZZ 000068014516

Born: 12-11-2006 Tattoo LE C302
 Breeder & Owner: OAK KNOB GUERNSEYS
 CRAIG & GLADIE CHURCH
 3347 310TH AVE
 CRESCO IA 52136
 563-547-4871

JOHNES VACCINATE

PA: +427M +0.00% +19F -0.04% +8P +152CM\$ +164NM\$
 PTAT +0.5 PTI +75
 ST SR BD DF RA TW RL FA
 +0.2 +0.6 +0.1 -0.3 H0.8 +0.4 P0.1 S0.4
 FU RH RW UC UD TP TL
 +1.1 +0.3 -0.2 +0.2 S1.2 C0.4 -0.6

OAK KNOB LJ GUNNER 000068009096

PA: -45M +0.08% +10F -0.03% -6P +94CM\$ +104NM\$
 PTAT +0.6 PTI +43
 ST SR BD DF RA TW RL FA
 -0.5 +1.0 +0.3 -1.1 H1.1 +0.5 P0.2 S0.3
 FU RH RW UC UD TP TL
 +2.1 +0.3 -0.3 +0.3 S2.0 C0.9 -1.0

OAK KNOB HUDSON FLAVOR 000068003134

2-07 30D 2X 1562M 4.4% 68F 3.2% 50P RIP

KNAPPS LOR JORDAN-ET 000000603912 (001GU00411)

02/07 USDA PTA +466M -0.10% +3F -65NM\$ 4NM%ile
 -0.08% +1P -94CM\$ 84% Rel
 AGA 02/07 PTAT +0.7 74% Rel PTI +21

GOLDEN POINT GOLIATH GYPSY 000003044822

02/07 USDA PTA -556M +0.25% +17F +272NM\$ 96NM%ile
 +0.03% -13P +281CM\$ 66% Rel
 3 App 02/07 PTAT +0.4 58% Rel CPI +63
 Appraisal: 91 @ 9-08 (91/86)
 5-05 365D 2X 23330M 5.3% 1246F 3.3% 778P DHIA

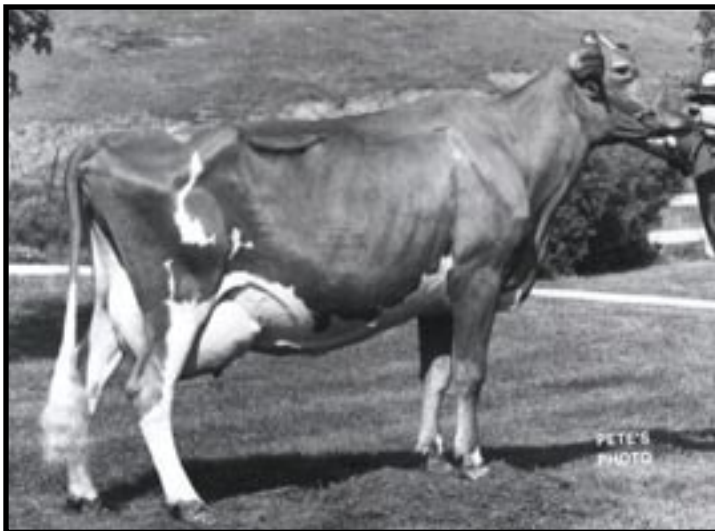
JENS GOLD FORT HUDSON 000000604713 (014GU00297)

02/07 USDA PTA +1580M -0.10% +51F +263NM\$ 91NM%ile
 -0.04% +44P +253CM\$ 62% Rel
 AGA 02/07 PTAT +1.1 51% Rel PTI +181

OAK KNOB GEODE FLAUNT 000003063724

02/07 USDA PTA +217M -0.05% +2F +184NM\$ 84NM%ile
 -0.05% -2P +165CM\$ 53% Rel
 4 Rec YDev: +1312M +40F +29P
 3 App 02/07 PTAT -0.5 52% Rel CPI +16
 Appraisal: 85 @ 4-10 (86/85)
 2-06 322D 2X 19640M 4.1% 796F 3.1% 612P 95
 3-06 330D 2X 21470M 3.8% 814F 3.2% 678P 94
 4-06 342D 2X 21840M 3.9% 842F 3.3% 724P 92

OAK KNOB PERFECT FLIGHT 82 @ 3-06 (82/78)
 2-06 365D 2X 17920M 4.3% 779F 3.2% 566P DHIA



Green Moor Tammys M Twinkle EX-90
 7-01 365D 22,347M 4.7% 1,048F 3.5% 755P
 Life: 149,351M 4.8% 7,133F 3.6% 5,387P
 Maternal Family Member of Lot 10



Green Moor Twilites S Twila EX-91
 3-05 359D 19,073M 4.9% 995F 3.5% 703P
 Maternal Family Member of Lot 10

LOT 10 LANG HAVEN KHAN TIARA**000068014496**

Born: 01-01-2007 Tattoo LE 846L
 Breeder & Owner: LANGREHR DON & KATHY
 W3411 FENNIGKOH RD
 WEST SALEM WI 54669
 608-786-1098

PA: +401M +0.05% +27F +0.03% +17P +170CM\$ +160NM\$
 PTAT +1.3 PTI +103
 ST SR BD DF RA TW RL FA
 +0.5 +0.9 +0.4 +0.3 H1.8 +1.0 S0.3 S0.3
 FU RH RW UC UD TP TL
 +1.0 +0.6 +0.7 +0.3 S0.7 C0.1 +0.1

RIVERWOOD TILLER KHAN 00000605000 (007GU00409)
 PA: +905M +0.11% +59F +0.03% +35P +279CM\$ +264NM\$
 PTAT +2.1 PTI +190
 ST SR BD DF RA TW RL FA
 +2.2 +1.6 +1.7 +1.9 H1.8 +1.9 P0.1 S0.4
 FU RH RW UC UD TP TL
 +1.5 +1.5 +2.1 +0.4 S0.5 C1.0 -0.3

GREEN MOOR NATHAN TICKLE 000003078212
 02/07 USDA PTA -103M -0.01% -6F +56NM\$ 48NM%ile
 +0.02% -1P +61CM\$ 51% Rel
 2 Rec YDev: +519M +16F +32P
 2 App 02/07 PTAT +0.4 44% Rel CPI +12
 Appraisal: 84 @ 4-03 (82/76)
 ST SR BD DF RA TW RL FA FU RH RW UC UD TP TL
 25 37 34 17 24 32 28 16 20 28 23 22 31 21 27
 2-05 335D 2X 19040M 4.7% 887F 3.4% 655P 95
 3-06 310D 2X 17500M 4.7% 824F 3.4% 601P 94

LOT 11 JENS GOLD SPRINT INSPIRE**000068014691**

Born: 01-04-2007 Tattoo LE Z169 RE JSI
 Breeder & Owner: JENS GOLD FARMS
 DALE & LYLE JENSEN
 1308 80TH ST
 AMERY WI 54001
 715-268-8711

PA: +720M -0.02% +29F -0.05% +15P +85CM\$ +101NM\$
 PTAT +0.9 PTI +85
 ST SR BD DF RA TW RL FA
 +0.6 +0.4 +1.1 +1.4 L0.5 +0.5 P0.3 0.0
 FU RH RW UC UD TP TL
 +0.6 +1.6 +1.4 +1.1 D0.4 C0.3 +0.1

JENS GOLD REGIS Z SPRINT-ET 00000604914
 PA: +913M +0.01% +42F -0.05% +22P +202CM\$ +216NM\$
 PTAT +1.5 PTI +139
 ST SR BD DF RA TW RL FA
 +1.9 +1.1 +1.7 +1.6 L0.7 +1.1 P0.2 L0.1
 FU RH RW UC UD TP TL
 +2.1 +2.4 +1.7 +1.4 S1.0 C0.4 +0.1

JENS GOLD VALIANT INDIVISIBLE 000003075927
 02/07 USDA PTA +526M -0.05% +15F -15NM\$ 28NM%ile
 -0.05% +8P -32CM\$ 53% Rel
 2 Rec YDev: +1971M +76F +42P
 2 App 02/07 PTAT +0.2 52% Rel CPI +28
 Appraisal: 81 @ 4-00 (83/85)
 ST SR BD DF RA TW RL FA FU RH RW UC UD TP TL
 30 25 41 35 30 32 30 22 25 40 32 42 20 20 26
 2-04 336D 2X 17600M 4.4% 775F 3.2% 561P 95
 3-04 365D 2X 21548M 4.4% 1046F 3.3% 697P 93

TROTACRE LORAL TILLER-ET 00000603341 (007GU00360)
 02/07 USDA PTA +896M +0.02% +43F +80NM\$ 30NM%ile
 -0.04% +22P +69CM\$ 96% Rel
 AGA 02/07 PTAT +2.9 95% Rel PTI +164

RIVERWOOD GLACIER KUKU 000003052931
 02/07 USDA PTA +914M +0.19% +75F +448NM\$ 99NM%ile
 +0.10% +47P +489CM\$ 61% Rel
 5 Rec YDev: +2835M +220F +138P
 3 App 02/07 PTAT +1.3 57% Rel CPI +214
 Appraisal: 88 @ 5-02
 6-11 305D 2X 23910M 4.4% 1047F 3.8% 905P 94

LANG HAVEN LORD NATHAN 00000603705 (001GU00410)
 02/07 USDA PTA +40M +0.05% +10F +106NM\$ 30NM%ile
 -0.01% +0P +103CM\$ 77% Rel
 AGA 02/07 PTAT +1.0 71% Rel PTI +66

GREEN MOOR BIG AL TRIXIE 000003062265
 02/07 USDA PTA -466M -0.05% -29F -125NM\$ 8NM%ile
 +0.01% -13P -123CM\$ 51% Rel
 1 Rec YDev: -961M -81F -28P

JOHNES VACCINATE

MARODORE ENHANCER REGIS-ET 00000603223 (014GU00280)
 02/07 USDA PTA +1237M -0.11% +35F +130NM\$ 34NM%ile
 -0.11% +21P +93CM\$ 95% Rel
 AGA 02/07 PTAT +1.4 94% Rel PTI +116

JENS GOLD ROYAL OAK Z SPRUCE 000003052204
 02/07 USDA PTA +589M +0.13% +49F +301NM\$ 97NM%ile
 +0.02% +23P +311CM\$ 66% Rel
 5 Rec YDev: +1891M +138F +72P
 5 App 02/07 PTAT +1.6 61% Rel CPI +161
 Appraisal: 92 @ 6-01 (91/91)
 6-11 365D 2X 22780M 4.7% 1073F 3.2% 736P DHIA

TAMARACKS PERFECTOS VALIANT-ET 602300 (009GU00134)
 02/07 USDA PTA -132M +0.06% +4F -145NM\$ 0NM%ile
 +0.00% -4P -144CM\$ 97% Rel
 AGA 02/07 PTAT +1.4 97% Rel PTI +22

JENS GOLD VELOUR INDIGO 000003054655
 02/07 USDA PTA +894M -0.17% +10F +36NM\$ 42NM%ile
 -0.09% +13P +4CM\$ 58% Rel
 2 Rec YDev: +1480M -5F +29P
 2 App 02/07 PTAT -1.1 55% Rel CPI -12
 Appraisal: 56 @ 4-01
 2-08 362D 2X 24580M 4.4% 1076F 3.3% 810P DHIA

THIRD DAM: JENSGOLDEN GOLIATH INDURA 000003041900
 Appraisal: 83 @ 4-09
 5-05 365D 2X 26170M 4.4% 1152F 3.0% 793P DHIA
 6-10 305D 2X 21340M 4.2% 903F 2.9% 613P 99
 1930D 127,980M 4.5% 5,764F 3.1% 3,913P LIFE

FOURTH DAM: JENSGOLDEN VICTORY INDY 000003009347
 Appraisal: 81 @ 4-01
 2-08 314D 2X 18260M 4.5% 824F 3.7% 671P DHIA
FIFTH DAM: JENSGOLDEN PROKING IPPY 000002960297
 Appraisal: 85 @ 4-04
 4-08 305D 2X 17400M 4.7% 817F 3.4% 599P DHIA