

**LOT# 01 \$ \_\_\_\_\_**

**GURN Z MEADOW AMELIA ASTER**

**003079171**

BORN: 09-24-02

BREEDER & OWNER: ORCHARD WILLIAM R  
GURN Z MEADOW  
S109 W39186 HWY 67  
EAGLE WI 53119  
262-495-2582

SELLING OPEN  
CALFHOOD & JOHNES VACCINATE

PA: +869M +.04% +44F +102\$ -.05% +21P +104P\$ +100CY\$  
PTAT -0.5

ST SR DF BD FA RL RA TW  
-1.8 -1.5 +0.1 -1.2 L0.3 P0.3 L1.4 -1.5  
FU RW RH TP TL UC UD  
-0.1 +0.3 +0.4 W0.3 -0.5 +0.3 D0.2

**ROZELYN ENHANCER JULES-ET 000603287 (014G0279)**

11/02 USDA PTA +1225M +0.01% +56F +139\$ +135CY\$ 84% REL  
PROT -0.07% +29P +141P\$ 84% REL

AGA 11-02 PTAT 0.0 84% REL PTI +151

ST SR DF BD FA RL RA TW  
-2.2 -1.5 +0.8 -0.9 0.0 P0.6 L2.0 -2.1  
FU RW RH TP TL UC UD  
-0.7 +0.8 +0.4 W0.6 -0.2 +0.1 D1.3

**GURN Z MEADOW ANGELICA AMELIA 003053221 85 @ 5-02**

11/02 USDA PTA +512M +0.06% +32F +65\$ +66CY\$ 51% REL  
PROT -0.02% +13P +67P\$ 85%ILE P\$

11/02 USDA PPA +1071M +80F +146\$ +21P +139P\$ +129CY\$

2 REC YD +1776M +112F +226\$ +47P +239P\$ +235CY\$

1 APP 11-02 PTAT -0.9 44% REL CPI +42

2-08 365D 2X 17160M 4.3% 777F 3.3% 570P DHIR

3-10 354D 2X 21478M 5.0% 1075F 3.5% 748P DHIR

4-11 305D 2X 18829M 902F 632P PROJ ACT.

ST SR BD DF RA TW RL FA FU RH RW UC UD TP TL

23 27 32 37 29 29 33 17 24 38 34 21 18 22 33

**LOT# 02 \$ \_\_\_\_\_**

**TERPHILL GOLIATH CREAMPUFF**

**003079091**

BORN: 07-16-02

BREEDER: TATTOO RE K339TATTOO LE K339

SPARTA WI 54656

OWNER: KNAPP D RANDY & FAMILY

22245 PILOT GROVE RD

EPWORTH IA 52045

563-876-3834

SELLING OPEN  
CALFHOOD & JOHNES VACCINATE

PA: +390M +.07% +28F +52\$ -.03% +9P +52P\$ +50CY\$  
PTAT -0.1

ST SR DF BD FA RL RA TW  
-0.7 -0.2 -0.4 -0.4 S0.2 P0.1 H1.0 -1.0  
FU RW RH TP TL UC UD  
+0.7 -0.3 -0.7 C0.5 -1.1 -0.4 S1.0

**ROZELYN PAT MAR P GOLIATH-ET 000600974 (007G0302)**

11/02 USDA PTA +219M +0.21% +43F +51\$ +72CY\$ 99% REL  
PROT +0.03% +12P +65P\$ 99% REL

AGA 11-02 PTAT -0.1 99% REL PTI +91

ST SR DF BD FA RL RA TW

-1.4 -0.4 -0.7 -0.7 S0.3 P0.1 H2.0 -1.9

FU RW RH TP TL UC UD

+1.4 -0.6 -1.3 C0.9 -2.1 -0.7 S2.0

**TERPHILL TRUMPET CREAMY 003061783**

11/02 USDA PTA +561M -0.08% +12F +53\$ +27CY\$ 45% REL  
PROT -0.08% +6P +39P\$ 26%ILE P\$

11/02 USDA PPA +75M -13F -5\$ -24P -56P\$ -87CY\$

1 REC YD -3160M -126F -343\$ -132P -463P\$ -515CY\$

2-05 93D 6227M 4.3% 265F 2.8% 174P RIP

305D 19944M 903F 620P PROJ ACT

**ROZELYN PATS PRINCE-ET 000595650 ( )**

11/02 USDA PTA +198M +0.09% +22F +33\$ +71CY\$ 87% REL  
PROT +0.07% +17P +58P\$ 87% REL

AGA 11-02 PTAT -1.0 84% REL PTI +69

**ROZELYN HONORS GLORIA 002902962 92 @ 5-07**

11/02 USDA PTA +251M +0.29% +57F +65\$ +115CY\$ 79% REL  
PROT +0.09% +22P +97P\$ 99%ILE P\$

11/02 USDA PPA +2914M +253F +426\$ +130P +553P\$ +610CY\$

4 REC YD +1763M +176F +276\$ +89P +373P\$ +421CY\$

3 APP 11-02 PTAT +0.7 71% REL CPI +166

4-09 365D 2X 30070M\* 5.4% 1611F\* 3.8% 1149P\* DHIR

**SPRING WALK KARIS TRUMPET 000601647 (001G0368)**

11/02 USDA PTA +1781M -0.16% +51F +178\$ +164CY\$ 96% REL  
PROT -0.11% +40P +176P\$ 97% REL

AGA 11-02 PTAT 0.0 97% REL PTI +167

**TERPHILL MAGIC COTTAGE 003036627 87 @ 4-04**

11/02 USDA PTA -47M -0.02% -5F -8\$ -29CY\$ 57% REL  
PROT -0.04% -8P -21P\$ 21%ILE P\$

11/02 USDA PPA -400M -43F -65\$ -37P -121P\$ -151CY\$

5 REC YD -620M -39F -79\$ -36P -122P\$ -145CY\$

3 APP 11-02 PTAT +0.5 56% REL CPI -5

4-03 305D 2X 14870M 4.8% 714F 3.2% 475P DHIA

5-05 290D 2X 10850M 3.7% 405F 3.1% 338P DHI

6-07 305D 2X 14400M 4.2% 598F 2.9% 424P DHI

TERPHILL LOGIC COLBY PTA +43\$ 86 @ 2-08

**LOT# 03 \$**

**ROLLING PRAIRIE KING LYNX**

**003079005**

BORN: 10-16-02 TATTOO RE H277TATTOO LE H277  
BREEDER & OWNER: ROLLING PRAIRIE FARMS INC  
DANIEL WALTHER  
28112 215TH ST  
GARNAVILLO IA 52049  
563-964-2552

SELLING OPEN  
CALFHOOD & JOHNES VACCINATE

PA: +358M +.09% +30F +51\$ +.03% +16P +66P\$ +72CY\$  
PTAT +0.7

ST SR DF BD FA RL RA TW  
+1.2 +0.1 +1.5 +1.0 S0.2 P0.3 L1.1 +0.2  
FU RW RH TP TL UC UD  
+0.2 +0.7 +0.8 C1.6 +0.3 -0.4 D0.4

**JENSGOLDEN V PROTEIN KING 000598017 (014G0210)**

11/02 USDA PTA -192M +0.3% +38F +16\$ +40CY\$ 98% REL  
PROT +0.06% +3P +30P\$ 98% REL  
AGA 11-02 PTAT +0.9 99% REL PTI +91

ST SR DF BD FA RL RA TW  
+1.0 +0.6 +1.2 +1.6 S0.7 P0.1 L1.9 +0.7  
FU RW RH TP TL UC UD  
+0.8 +0.5 +0.4 C2.8 +1.1 +0.1 D0.6

**ROLLING PRAIRIE PJ LUXURIOUS 003057962 82 @ 2-09**

11/02 USDA PTA +908M -0.12% +21F +87\$ +104CY\$ 43% REL  
PROT -0.01% +28P +101P\$ 71%ILE P\$  
11/02 USDA PPA +2171M +27F +188\$ +65P +219P\$ +224CY\$  
1 REC YD +1981M +1F +153\$ +53P +168P\$ +165CY\$  
1 APP 11-02 PTAT +0.4 45% REL CPI +110  
2-00 365D 2X 22445M 3.9% 898F 3.2% 731P DHIR  
3-10 305D 21420M 961F 646P PROJ ME

ST SR BD DF RA TW RL FA FU RH RW UC UD TP TL  
34 24 25 38 30 20 18 27 29 3 7 31 22 41 27 23

**LOT# 04 \$**

**JARIS HILLS LORD HALO**

**003078578**

BORN: 06-07-02 TATTOO LE J62H  
BREEDER & OWNER: BOLLECH EDWARD  
58631 HWY 23  
PLAIN WI 53577  
715-257-7641

SELLING OPEN  
CALFHOOD VACCINATE

PA: +950M -.03% +39F +104\$ -.01% +31P +121P\$ +126CY\$  
PTAT -0.1

ST SR DF BD FA RL RA TW  
+0.6 +0.7 +1.4 +1.0 L0.3 S0.3 L2.0 +1.0  
FU RW RH TP TL UC UD  
-1.0 +1.1 -0.1 W0.2 0.0 -0.7 D2.0

**TROTACRE MERCURY LORD-ET 000602119 (009G0131)**

11/02 USDA PTA +932M -0.02% +39F +103\$ +128CY\$ 92% REL  
PROT 0.0% +31P +122P\$ 93% REL  
AGA 11-02 PTAT +0.3 92% REL PTI +137

ST SR DF BD FA RL RA TW  
+1.3 +1.2 +0.9 +1.2 S0.1 P1.1 L1.2 +1.3  
FU RW RH TP TL UC UD  
+0.6 +0.9 0.0 C0.2 +1.0 -0.5 D0.3

**JARIS HILLS TRUMPET HAPPY 003055526 70 @ 3-00**

11/02 USDA PTA +968M -0.03% +38F +105\$ +124CY\$ 51% REL  
PROT -0.01% +30P +120P\$ 58%ILE P\$  
11/02 USDA PPA +1418M +82F +175\$ +47P +204P\$ +212CY\$  
2 REC YD +1717M +95F +208\$ +54P +237P\$ +244CY\$  
2 APP 11-02 PTAT -0.4 55% REL  
1-10 305D 2X 12444M 4.7% 588F 3.2% 402P DHI  
2-11 305D 2X 13642M 4.6% 628F 3.4% 460P DHI

ST SR BD DF RA TW RL FA FU RH RW UC UD TP TL  
28 17 43 38 33 25 33 20 01 33 24 10 18 25 25

**HARMONY QUANTITY VOLCANO 000593564 (014G0186)**

11/02 USDA PTA -223M +0.32% +38F +13\$ +37CY\$ 98% REL  
PROT +0.06% +2P +27P\$ 99% REL  
AGA 11-02 PTAT -0.6 98% REL PTI +49

**JENSGOLDEN MAVERICK KELLA 002799845 90 @ 6-04**

08/00 USDA PTA -190M +0.11% +8F -8\$ +45CY\$ 77% REL  
PROT +0.12% +12P +25P\$ 40%ILE P\$  
08/00 USDA PPA +1586M +96F +199\$ +103P +332P\$ +402CY\$  
5 REC YD +608M +53F +89\$ +58P +177P\$ +226CY\$  
2 APP 11-02 PTAT -0.6 67% REL CPI +14  
7-03 365D 2X 23280M 4.4% 1022F 3.5% 822P DHIR

**ROLLING PRAIRIE P JAY-TWIN 000603167**

AGA 11-02 PTAT +0.7 59% REL

**ROLLING PRAIRIE L LUXURY 003048037 80 @ 5-04**

05/01 USDA PTA +503M -0.07% +11F +47\$ +49CY\$ 54% REL  
PROT -0.02% +13P +50P\$ 53%ILE P\$  
05/01 USDA PPA +1759M +67F +189\$ +46P +200P\$ +196CY\$  
2 REC YD +1661M +61F +176\$ +43P +186P\$ +182CY\$  
3 APP 11-02 PTAT -0.3 60% REL CPI +33  
1-11 324D 2X 14840M 4.6% 680F 3.5% 512P DHIR  
3-00 305D 2X 20240M 4.7% 950F 3.3% 667P DHIR  
4-01 305D 2X 19400M 4.9% 942F 3.3% 641P DHIR

**ROLLING PRAIRIE VALIANT LEER PTA +30\$ 83 @ 2-04**

1-10 336D 2X 15405M 5.0% 771F 3.6% 557P DHIR

**LOT# 04 \$**

**JARIS HILLS LORD HALO**

**003078578**

BORN: 06-07-02 TATTOO LE J62H  
BREEDER & OWNER: BOLLECH EDWARD  
58631 HWY 23  
PLAIN WI 53577  
715-257-7641

SELLING OPEN  
CALFHOOD VACCINATE

PA: +950M -.03% +39F +104\$ -.01% +31P +121P\$ +126CY\$  
PTAT -0.1

ST SR DF BD FA RL RA TW  
+0.6 +0.7 +1.4 +1.0 L0.3 S0.3 L2.0 +1.0  
FU RW RH TP TL UC UD  
-1.0 +1.1 -0.1 W0.2 0.0 -0.7 D2.0

**TROTACRE MERCURY LORD-ET 000602119 (009G0131)**

11/02 USDA PTA +932M -0.02% +39F +103\$ +128CY\$ 92% REL  
PROT 0.0% +31P +122P\$ 93% REL  
AGA 11-02 PTAT +0.3 92% REL PTI +137

ST SR DF BD FA RL RA TW  
+1.3 +1.2 +0.9 +1.2 S0.1 P1.1 L1.2 +1.3  
FU RW RH TP TL UC UD  
+0.6 +0.9 0.0 C0.2 +1.0 -0.5 D0.3

**JARIS HILLS TRUMPET HAPPY 003055526 70 @ 3-00**

11/02 USDA PTA +968M -0.03% +38F +105\$ +124CY\$ 51% REL  
PROT -0.01% +30P +120P\$ 58%ILE P\$  
11/02 USDA PPA +1418M +82F +175\$ +47P +204P\$ +212CY\$  
2 REC YD +1717M +95F +208\$ +54P +237P\$ +244CY\$  
2 APP 11-02 PTAT -0.4 55% REL  
1-10 305D 2X 12444M 4.7% 588F 3.2% 402P DHI  
2-11 305D 2X 13642M 4.6% 628F 3.4% 460P DHI

ST SR BD DF RA TW RL FA FU RH RW UC UD TP TL  
28 17 43 38 33 25 33 20 01 33 24 10 18 25 25

**OAKLANDS MERCURY 000597376 (003G0184)**

11/02 USDA PTA +438M +0.08% +32F +59\$ +79CY\$ 97% REL  
PROT +0.01% +17P +73P\$ 97% REL  
AGA 11-02 PTAT -0.8 97% REL PTI +66

**TROTACRE FAYETTE LORETTA 002938801 92 @ 4-09**

11/02 USDA PTA +1512M -0.19% +35F +144\$ +143CY\$ 87% REL  
PROT -0.07% +37P +149P\$ 95%ILE P\$  
4 REC YD +4145M +93F +393\$ +105P +413P\$ +400CY\$  
2 APP 11-02 PTAT +2.3 79% REL CPI +229  
5-07 365D 2X 32710M\* 4.0% 1318F\* 3.3% 1067P\* DHIR

**SPRING WALK KARIS TRUMPET 000601647 (001G0368)**

11/02 USDA PTA +1781M -0.16% +51F +178\$ +164CY\$ 96% REL  
PROT -0.11% +40P +176P\$ 97% REL  
AGA 11-02 PTAT 0.0 97% REL PTI +167

**JARIS HILLS PATRICK HAYLEY 003044568 82 @ 3-07**

11/02 USDA PTA +273M +0.03% +16F +34\$ +89CY\$ 58% REL  
PROT +0.09% +24P +69P\$ 55%ILE P\$  
11/02 USDA PPA +91M +15F +19\$ +48P +111P\$ +165CY\$  
3 REC YD +584M +34F +72\$ +60P +165P\$ +217CY\$  
3 APP 11-02 PTAT 0.0 60% REL CPI +77  
2-01 357D 2X 14770M 4.4% 654F 3.8% 557P DHIR  
3-03 305D 2X 14342M 4.4% 638F 3.9% 565P DHIR  
4-05 305D 2X 13430M 4.4% 594F 3.7% 492P DHIR

**THIRD DAM: JARIS HILLS TRIUMPH HILLARY 87 @ 5-01**

**FOURTH DAM: JARIS HILLS BT JUSTIN HEATEHR 88 @ 5-06**

5-10 305D 2X 17020M 3.8% 651F 3.5% 599P DHIR

**FIFTH DAM: BETTSWARDS PUF HORNET HAIDEE 84 @ 3-11**

4-03 305D 2X 16330M 4.5% 730F 3.7% 597P DHIR

**LOT# 05 \$** \_\_\_\_\_

**WOODALE GLACIER CLAIR 003079335**

BORN: 09-20-02  
BREEDER & OWNER: WOODMAN ROBERT J  
WOODALE FARM  
1812 VAN ALLEN RD  
JANESVILLE WI 53546  
608-754-2733

SELLING OPEN  
CALFHODD & JOHNES VACCINATE

PA: +425M +.11% +35F +61\$ +.03% +19P +79P\$ +88CY\$  
PTAT +0.1

ST SR DF BD FA RL RA TW  
-0.6 +0.3 +0.3 +0.3 0.0 P0.2 H0.9 +0.1  
FU RW RH TP TL UC UD  
-0.6 +0.1 +0.4 W0.8 -1.4 -0.3 D0.4

**ROZELYN PATMAR JAY GLACIER-ET 000602961 (007G0343)**

11/02 USDA PTA +669M +0.14% +52F +93\$ +149CY\$ 84% REL  
PROT +0.07% +34P +130P\$ 84% REL

AGA 11-02 PTAT +0.9 76% REL PTI +179

ST SR DF BD FA RL RA TW  
+0.7 +1.0 +1.2 +0.8 0.0 P0.1 H1.0 +0.6  
FU RW RH TP TL UC UD  
-0.2 +0.9 +1.6 C0.2 -2.0 -0.3 D0.2

**WOODALE E CLEVER 003043150 72 @ 5-11**

11/02 USDA PTA +181M +0.07% +18F +28\$ +27CY\$ 59% REL  
PROT -0.01% +4P +28P\$ 52%ILE P\$

11/02 USDA PPA -314M +27F -3\$ -9P -6P\$ -6CY\$  
4 REC YD +127M +35F +38\$ +2P +36P\$ +34CY\$

AGA 11-02 PTAT -0.7 35% REL CPI +9  
2-06 337D 2X 12790M 4.6% 592F 3.4% 434P DHIR  
3-05 305D 2X 10844M 5.0% 537F 3.8% 413P DHIR  
4-05 305D 2X 15845M 4.6% 735F 3.5% 554P DHIR  
5-06 305D 2X 12424M 4.5% 561F 3.4% 417P DHIR

ST SR BD DF RA TW RL FA FU RH RW UC UD TP TL  
38 41 34 06 22 24 34 35 22 14 07 16 31 16 26

WOODALE LUKE CHRIS 85 @ 3-06  
3-03 305D 2X 19170M 4.0% 768F 3.2% 618P

**ROZELYN PRINCE JAY-ET 000600064 (021G0332)**

11/02 USDA PTA +568M +0.08% +38F +74\$ +157CY\$ 98% REL  
PROT +0.14% +40P +128P\$ 98% REL

AGA 11-02 PTAT -0.8 99% REL PTI +125

**ROZELYN PATMAR P GINA-ET 003010608 90 @ 3-07**

11/02 USDA PTA +213M +0.24% +47F +54\$ +133CY\$ 78% REL  
PROT +0.14% +30P +104P\$ 98%ILE P\$

11/02 USDA PPA +1163M +155F +213\$ +115P +390P\$ +488CY\$  
2 REC YD +1043M +145F +196\$ +106P +360P\$ +452CY\$

2 APP 11-02 PTAT +1.0 72% REL CPI +180  
3-05 365D 2X 22460M 5.4% 1217F 4.2% 951P DHIR

**GOLDEN WHEY MAGIC ENERGIZER 000602193 (007G0329)**

11/02 USDA PTA +638M +0.05% +36F +78\$ +98CY\$ 85% REL  
PROT +0.01% +22P +93P\$ 85% REL

AGA 11-02 PTAT -0.5 82% REL PTI +91

**WOODALE JESSE CLASSIC 002991187**

11/02 USDA PTA -192M +0.05% -1F -16\$ -32CY\$ 64% REL  
PROT -0.02% -10P -27P\$ 18%ILE P\$

11/02 USDA PPA -1229M -35F -122\$ -40P -146P\$ -153CY\$  
5 REC YD -699M -13F -64\$ -28P -88P\$ -98CY\$

AGA 11-00 PTAT -1.2 27% REL / PTI -82 0% REL  
2-04 349D 2X 11370M 4.7% 536F 3.7% 417P DHIR  
3-05 341D 2X 12080M 4.4% 533F 3.6% 434P DHIR  
4-07 336D 2X 14010M 4.3% 604F 3.3% 466P DHIR  
5-08 354D 2X 13700M 4.5% 621F 3.4% 462P DHIR  
6-10 339D 2X 13440M 4.4% 590F 3.4% 459P DHIR  
7-11 305D 2X 14590M 4.3% 629F 3.3% 487P DHIR  
9-08 305D 2X 12790M 4.3% 556F 3.3% 428P DHIR

WOODALE DIXIE CASE PTA -19\$  
3-02 337D 2X 13740M 3.9% 538F 3.3% 456P DHIR  
WOODALE NITRO CHERIE PTA +49\$ 86 @ 3-11  
2-04 314D 2X 14480M 4.8% 699F 3.4% 486P DHIR

**LOT# 06 \$** \_\_\_\_\_

**RIDGEROLL BRYANTS DRENA 003078019**

BORN: 06-25-02 TATTOO LE R985  
BREEDER & OWNER: VERGIN JEROME  
RIDGEROLL FARM  
1570 ECKERT AVE SE  
BUFFALO MN 55313  
763-498-8012

SELLING OPEN

PA: +855M -.09% +24F +85\$ -.01% +27P +99P\$ +102CY\$  
PTAT +0.6

ST SR DF BD FA RL RA TW  
+0.2 +0.2 -0.1 -0.2 S0.3 P0.0 H0.7 +0.2  
FU RW RH TP TL UC UD  
+0.6 +0.2 +0.2 W0.0 +0.4 -0.1 S0.7

**RIPLEY FARMS HOT SHOT BRYANT-ET 000604274 (014G0291)**

PA: +1558M -.13% +48F +158\$ -.01% +51P +188P\$ +197CY\$  
PTAT +1.2

ST SR DF BD FA RL RA TW  
+1.9 +0.2 +2.1 +0.5 S0.6 S0.3 H0.4 -0.2  
FU RW RH TP TL UC UD  
-0.1 +1.0 +1.1 C0.1 -0.9 +0.4 S0.1

**RIDGEROLL TRIPLE PLAY DELTA 003078017**

1-10 267D 2X 9920M 4.7% 401F 2.9% 289P DHIR  
2-10 305D 2X 13638M 4.2% 566F 3.0% 403P DHIR  
3-10 305D 2X 14112M 594F 388P PROJ ACT

**MYRTLEDALES MAGIC HOT SHOT-ET 000602097 (001G0381)**

11/02 USDA PTA +1557M -0.15% +44F +155\$ +162CY\$ 94% REL  
PROT -0.06% +41P +165P\$ 94% REL

AGA 11-02 PTAT +0.1 92% REL PTI +161

**LAESCHLAND PERFECT BLISS-ET 003024141 92 @ 4-07**

11/02 USDA PTA +1558M -0.11% +51F +160\$ +232CY\$ 66% REL  
PROT +0.05% +61P +211P\$ 99%ILE P\$

11/02 USDA PPA +6250M +253F +682\$ +223P +842P\$ +899CY\$  
2 REC YD +6658M +265F +723\$ +242P +902P\$ +969CY\$  
3 APP 11-02 PTAT +2.2 67% REL CPI +302  
3-08 365D 2X 35220M\* 3.9% 1382F\* 3.6% 1253P\* DHIR

**NEDROW FARMS TRIPLE PLAY-TRI 000603235 (007G0353)**

11/02 USDA PTA +304M -0.06% +4F +27\$ +25CY\$ 64% REL  
PROT -0.02% +7P +27P\$ 64% REL

AGA 11-02 PTAT +0.4 61% REL PTI +32

**RIDGEROLL FRANKS DIMPLE 003078016**

PA: 0M -0.2% -4F -3\$ -0.2% -3P -9P\$ -12CY\$  
PTAT -0.4

**LOT# 07 \$** \_\_\_\_\_

**IDLE GOLD TLT ANAHEIM 003079389**

BORN: 11-04-02  
BREEDER & OWNER: JENSEN NEIL & JANICE  
IDLE GOLD GUERNSEYS  
1361 60TH ST  
TURTLE LAKE WI 54889  
715-268-8611

SELLING OPEN  
JOHNES VACCINATE

PA: +617M +0.09% +39F +79\$ -0.02% +18P +85P\$ +86CY\$  
PTAT +0.9  
ST SR DF BD FA RL RA TW  
+0.5 +1.0 +0.5 +0.9 S0.4 S0.4 H0.9 +0.9  
FU RW RH TP TL UC UD  
+1.4 +0.6 +1.2 C0.9 -0.4 +0.1 S1.2

**TROTACRE LORAL TILLER-ET 000603341 (007G0360)**  
11/02 USDA PTA +1462M -0.07% +52F +154\$ +153CY\$ 73% REL  
PROT -0.07% +36P +159P\$ 73% REL  
AGA 11-02 PTAT +2.3 74% REL PTI +221  
ST SR DF BD FA RL RA TW  
+4.2 +3.3 +3.3 +3.5 S0.7 S0.7 H0.1 +3.6  
FU RW RH TP TL UC UD  
+0.7 +2.9 +2.9 C1.0 +1.0 +0.8 D0.7

**IDLE GOLD GOLIATH AUSTRALIA 003054358 80 @ 4-01**  
11/02 USDA PTA -228M +0.24% +26F +3\$ +18CY\$ 54% REL  
PROT +0.04% -1P +12P\$ 85%ILE P\$  
11/02 USDA PPA -82M +59F +41\$ +4P +53P\$ +60CY\$  
2 REC YD -456M +48F +3\$ -6P +12P\$ +20CY\$  
2 APP 11-02 PTAT -0.5 57% REL CPI +19  
2-02 342D 2X 15612M 4.8% 752F 3.3% 516P DHI  
3-03 365D 2X 19070M 4.8% 923F 3.4% 648P DHI  
  
ST SR BD DF RA TW RL FA FU RH RW UC UD TP TL  
11 29 32 15 15 27 35 29 42 32 28 22 35 37 16

**LOT# 08 \$** \_\_\_\_\_

**LONE ACRES TILLER IVY 003079343**

BORN: 12-14-02 TATTOO RE K249TATTOO LE K249  
BREEDER & OWNER: KIPP FREDERICK F  
LONE ACRES FARM  
BOX 291  
NORTH PRAIRIE WI 53153  
262-392-3889

SELLING OPEN  
CALFHOOD AND JOHNES VACCINATE

PA: +608M +0.07% +36F +75\$ -0.04% +14P +75P\$ +72CY\$  
PTAT +1.3  
ST SR DF BD FA RL RA TW  
+1.6 +1.0 +1.4 +1.4 S0.4 S0.6 L0.1 +1.5  
FU RW RH TP TL UC UD  
+1.0 +1.3 +1.4 C1.8 -0.2 +0.4 S0.2

**TROTACRE LORAL TILLER-ET 000603341 (007G0360)**  
11/02 USDA PTA +1462M -0.07% +52F +154\$ +153CY\$ 73% REL  
PROT -0.07% +36P +159P\$ 73% REL  
AGA 11-02 PTAT +2.3 74% REL PTI +221  
ST SR DF BD FA RL RA TW  
+4.2 +3.3 +3.3 +3.5 S0.7 S0.7 H0.1 +3.6  
FU RW RH TP TL UC UD  
+0.7 +2.9 +2.9 C1.0 +1.0 +0.8 D0.7

**LONE ACRES P KING IMAGINE 003036387 91 @ 7-02**  
11/02 USDA PTA -246M +0.2% +19F -4\$ -10CY\$ 60% REL  
PROT 0.0% -8P -8P\$ 42%ILE P\$  
11/02 USDA PPA -643M +59F -2\$ -30P -33P\$ -47CY\$  
5 REC YD -575M +45F -8\$ -22P -26P\$ -33CY\$  
2 APP 11-02 PTAT +0.2 57% REL CPI +55  
2-00 365D 2X 14570M 5.0% 728F 3.5% 517P DHIR  
3-02 334D 2X 16808M 4.9% 819F 3.6% 597P DHIR  
4-07 365D 2X 18012M 5.4% 966F 3.6% 646P DHIR  
5-10 287D 2X 17050M 5.1% 864F 3.1% 526P DHIR  
6-09 365D 2X 16364M 5.0% 825F 3.1% 513P DHIR

LONE ACRES B ISIS 80 @ 3-08  
3-04 305D 2X 18600M 4.6% 856F 3.0% 552P DHIR

**TROTACRE MERCURY LORAL-ET 000602121 (007G0322)**  
11/02 USDA PTA +354M -0.05% +7F +33\$ +34CY\$ 95% REL  
PROT -0.01% +9P +35P\$ 95% REL  
AGA 11-02 PTAT +1.8 94% REL PTI +78

**GREENWOOD M TILLIE-ET 003013942 90 @ 3-03**  
11/02 USDA PTA +1625M -0.12% +51F +166\$ +165CY\$ 67% REL  
PROT -0.08% +40P +171P\$ 97%ILE P\$  
2 REC YD +4732M +145F +479\$ +123P +509P\$ +498CY\$  
2 APP 11-02 PTAT +2.0 63% REL CPI +248  
2-01 365D 2X 31730M\* 4.1% 1290F\* 3.1% 980P\* DHIR

**ROZELYN PAT MAR P GOLIATH-ET 000600974 (007G0302)**  
11/02 USDA PTA +219M +0.21% +43F +51\$ +72CY\$ 99% REL  
PROT +0.03% +12P +65P\$ 99% REL  
AGA 11-02 PTAT -0.1 99% REL PTI +91

**LEVEL GOLD TRAVEL ALYSSA-TWIN 003016951 85 @ 6-04**  
11/99 USDA PTA +81M +0.24% +37F +36\$ +64CY\$ 61% REL  
PROT +0.06% +11P +54P\$ 50%ILE P\$  
11/99 USDA PPA +166M +102F +94\$ +33P +153P\$ +186CY\$  
5 REC YD -135M +72F +47\$ +15P +83P\$ +106CY\$  
2 APP 11-02 PTAT -0.8 59% REL CPI +50  
2-03 305D 2X 11620M 5.0% 579F 3.6% 420P DHIA  
3-03 305D 2X 13120M 5.3% 701F 4.0% 528P DHIA  
4-03 297D 2X 14950M 5.6% 843F 3.6% 545P DHIR  
5-03 305D 2X 12760M 5.5% 705F 3.7% 474P DHIR  
6-03 304D 2X 14080M 5.4% 764F 3.6% 507P DHIA  
7-05 305D 2X 12680M 5.2% 663F 3.2% 408P DHI

IDLE GOLD GOLIATH AVONLEA PTA +58\$ 83 @ 3-09  
3-04 305D 2X 20740M 5.2% 1073F 3.8% 781P DHI

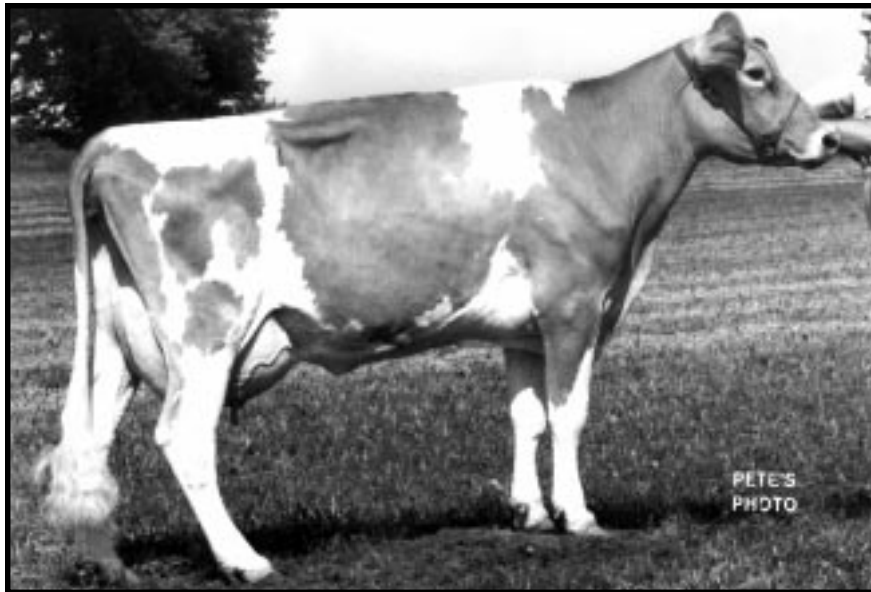
**TROTACRE MERCURY LORAL-ET 000602121 (007G0322)**  
11/02 USDA PTA +354M -0.05% +7F +33\$ +34CY\$ 95% REL  
PROT -0.01% +9P +35P\$ 95% REL  
AGA 11-02 PTAT +1.8 94% REL PTI +78

**GREENWOOD M TILLIE-ET 003013942 90 @ 3-03**  
11/02 USDA PTA +1625M -0.12% +51F +166\$ +165CY\$ 67% REL  
PROT -0.08% +40P +171P\$ 97%ILE P\$  
11/02 USDA PPA +3219M +87F +317\$ +76P +321P\$ +305CY\$  
2 REC YD +4732M +145F +479\$ +123P +509P\$ +498CY\$  
2 APP 11-02 PTAT +2.0 63% REL CPI +248  
2-01 365D 2X 31730M\* 4.1% 1290F\* 3.1% 980P\* DHIR

**JENSGOLDEN V PROTEIN KING 000598017 (014G0210)**  
11/02 USDA PTA -192M +0.3% +38F +16\$ +40CY\$ 98% REL  
PROT +0.06% +3P +30P\$ 98% REL  
AGA 11-02 PTAT +0.9 99% REL PTI +91

**LONE ACRES VIKING ILA 003000682 81 @ 5-04**  
11/02 USDA PTA -425M +0.04% -12F -42\$ -53CY\$ 60% REL  
PROT 0.0% -14P -51P\$ 19%ILE P\$  
11/02 USDA PPA -729M -26F -77\$ -19P -81P\$ -80CY\$  
4 REC YD -426M -12F -42\$ -15P -53P\$ -56CY\$  
2 APP 11-02 PTAT -1.0 54% REL CPI -90  
2-01 365D 2X 14640M 4.3% 634F 3.6% 527P DHIR  
3-05 365D 2X 20220M 4.3% 865F 3.6% 733P DHIR  
5-00 365D 2X 19680M 4.5% 879F 3.5% 694P DHIR  
6-05 305D 2X 15310M 4.6% 706F 3.5% 535P DHIR

**THIRD DAM: LONE ACRES JAY AMRGE 80 @ 5-08**  
5-02 365D 2X 19210M 4.4% 836F 3.5% 680P DHIR



**Amber Rae Henrys Okie VG-88**  
**4-08 365D 2X 21,000M 4.9% 1,028F 3.6% 756P**  
**Third Dam of Lot #09**

**LOT# 09 \$ \_\_\_\_\_**

**SUNNY BROOK PRINCEJAY OPRAH**

**003079223**

BORN: 07-30-02 TATTOO LE C30  
 BREEDER & OWNER: CHRISTOPHERSON CAROLYN  
 N5996 COUNTY RD DE  
 BANGOR WI 54614  
 608-486-4279

SELLING OPEN  
 CALFHOOD VACCINATE

PA: +91M +.11% +21F +24\$ +.08% +16P +51P\$ +66CY\$  
 PTAT -0.6  
 ST SR DF BD FA RL RA TW  
 +0.2 -0.4 -0.2 -0.7 L0.1 S0.1 H0.3 -0.8  
 FU RW RH TP TL UC UD  
 -1.0 -1.6 -0.6 W0.6 -1.1 -1.1 S0.4

**ROZELYN PRINCE JAY-ET 000600064 (021G0332)**  
 11/02 USDA PTA +568M +0.08% +38F +74\$ +157CY\$ 98% REL  
 PROT +0.14% +40P +128P\$ 98% REL  
 AGA 11-02 PTAT -0.8 99% REL PTI +125  
 ST SR DF BD FA RL RA TW  
 +0.8 -0.1 +0.5 -0.2 L0.3 P0.1 H1.1 0.0  
 FU RW RH TP TL UC UD  
 -2.6 -1.8 -0.6 W1.3 -0.9 -1.8 D1.2

**AMBER RAE GOLIATHS OPIE 003056344 77 @ 2-05**  
 11/02 USDA PTA -386M +0.14% +4F -26\$ -25CY\$ 55% REL  
 PROT +0.02% -9P -27P\$ 51%ILE P\$  
 11/02 USDA PPA -1217M +13F -83\$ -27P -81P\$ -73CY\$  
 3 REC YD -995M +3F -74\$ -27P -82P\$ -81CY\$  
 1 APP 11-02 PTAT -0.4 47% REL CPI -29  
 2-03 296D 3X 16750M 4.9% 814F 3.4% 574P DHIR  
 3-03 265D 2X 12170M 5.2% 634F 3.5% 430P  
 4-01 280D 2X 12070M 4.9% 596F 3.4% 411P

ST SR BD DF RA TW RL FA FU RH RW UC UD TP TL  
 24 21 18 25 31 19 33 25 26 34 24 27 34 24 18

**ROZELYN PATS PRINCE-ET 000595650 ( )**  
 11/02 USDA PTA +198M +0.09% +22F +33\$ +71CY\$ 87% REL  
 PROT +0.07% +17P +58P\$ 87% REL  
 AGA 11-02 PTAT -1.0 84% REL PTI +45

**ROZELYN ABLES JACKIE 002824098 85 @ 4-05**  
 11/01 USDA PTA +450M +0.1% +36F +63\$ +146CY\$ 79% REL  
 PROT +0.14% +37P +117P\$ 73%ILE P\$  
 11/01 USDA PPA +3156M +216F +415\$ +172P +615P\$ +714CY\$  
 3 REC YD +2116M +150F +283\$ +128P +442P\$ +523CY\$  
 3 APP 11-02 PTAT -1.5 72% REL CPI +76  
 5-08 365D 2X 29080M 5.1% 1487F\* 3.9% 1124P\* DHIR

**ROZELYN PAT MAR P GOLIATH-ET 000600974 (007G0302)**  
 11/02 USDA PTA +219M +0.21% +43F +51\$ +72CY\$ 99% REL  
 PROT +0.03% +12P +65P\$ 99% REL  
 AGA 11-02 PTAT -0.1 99% REL PTI +91

**AMBER RAE MISTERS OPIE 003043080**  
 11/02 USDA PTA -492M +0.05% -15F -50\$ -46CY\$ 46% REL  
 PROT +0.04% -11P -49P\$ 19%ILE P\$  
 11/02 USDA PPA -1660M -52F -169\$ -40P -173P\$ -165CY\$  
 1 REC YD -2563M -82F -262\$ -66P -277P\$ -270CY\$  
 AGA 11-02 PTAT -0.5 29% REL CPI -68

**THIRD DAM: AMBER RAE HENRY'S OKIE 88 @ 5-08**  
 4-08 365D 2X 21000M 4.9% 1028F 3.6% 756P DHIR

**LOT# 10 \$ \_\_\_\_\_**

**CLOVER NOOK LORAL KIWI**

**003079252**

BORN: 09-06-02 TATTOO LE CN60  
BREEDER & OWNER: SCHILL DONALD  
9549 CTY K  
AUBURNDALE WI 54412  
715-652-3457

SELLING OPEN  
VACCINATE

**OAKLANDS MERCURY 000597376 (003G0184)**  
11/02 USDA PTA +438M +0.08% +32F +59\$ +79CY\$ 97% REL  
PROT +0.01% +17P +73P\$ 97% REL  
AGA 11-02 PTAT -0.8 97% REL PTI +66

**TROTACRE MERCURY LORAL-ET 000602121 (007G0322)**  
11/02 USDA PTA +354M -0.05% +7F +33\$ +34CY\$ 95% REL  
PROT -0.01% +9P +35P\$ 95% REL  
AGA 11-02 PTAT +1.8 94% REL PTI +78  
ST SR DF BD FA RL RA TW  
+2.9 +3.3 +1.2 +3.7 S0.6 P0.2 L0.4 +3.0  
FU RW RH TP TL UC UD  
+1.9 +1.3 +1.3 C0.8 +0.9 +0.1 D0.1

**TROTACRE FAYETTE LORETTA 002938801 92 @ 4-09**  
11/02 USDA PTA +1512M -0.19% +35F +144\$ +143CY\$ 87% REL  
PROT -0.07% +37P +149P\$ 95%ILE P\$  
4 REC YD +4145M +93F +393\$ +105P +413P\$ +400CY\$  
2 APP 11-02 PTAT +2.3 79% REL  
5-07 365D 2X 32710M\* 4.0% 1318F\* 3.3% 1067P\* DHIR

**CLOVER NOOK HORNETS CURRENTS 003072762**

**MYRTLEDALES SMOKEY HORNET-ET 000601905 (007G0319)**  
11/02 USDA PTA +388M -0.02% +14F +41\$ +14CY\$ 82% REL  
PROT -0.08% +1P +25P\$ 82% REL  
AGA 11-02 PTAT +1.4 75% REL

**GUERNSEY VALLEY CARRIE 003024542**

**LOT# 11 \$ \_\_\_\_\_**

**KNAPPS AWARD GILDA**

**003079092**

BORN: 09-04-02 TATTOO RE K355TATTOO LE K355  
BREEDER & OWNER: KNAPP D RANDY & FAMILY  
22245 PILOT GROVE RD  
EPWORTH IA 52045  
563-876-3834

SELLING OPEN  
CALFHOOD & JOHNES VACCINATE

PA: +290M +0.03% +18F +36\$ -0.01% +8P +38P\$ +38CY\$  
PTAT +1.2  
ST SR DF BD FA RL RA TW  
-0.1 -0.6 +0.3 -0.1 L0.2 S0.1 L0.1 -0.8  
FU RW RH TP TL UC UD  
+0.2 0.0 +0.5 W0.3 +0.4 +0.4 S0.5

**SHERMA VICTORY ELLAS ENHANCER 000600510 (029G0918)**  
11/02 USDA PTA +1399M -0.05% +53F +150\$ +132CY\$ 97% REL  
PROT -0.1% +29P +144P\$ 97% REL  
AGA 11-02 PTAT +2.1 97% REL PTI +202

**KNAPPS AWARD-ET 000603602 (200G0101)**  
PA: +776M 0.0% +34F +87\$ -0.06% +16P +82P\$ +75CY\$  
PTAT +1.8  
ST SR DF BD FA RL RA TW  
+1.8 +0.5 +2.0 +0.7 S0.5 P0.3 L1.3 +0.5  
FU RW RH TP TL UC UD  
+0.6 +2.3 +2.1 C0.7 -0.8 +1.4 S0.4

**KNAPPS PERFECTO ALFINA 003021761 92 @ 4-00**  
11/02 USDA PTA +153M +0.05% +15F +24\$ +18CY\$ 66% REL  
PROT -0.02% +2P +21P\$ 58%ILE P\$  
11/02 USDA PPA +1157M +82F +154\$ +27P +155P\$ +149CY\$  
2 REC YD +1748M +102F +216\$ +43P +222P\$ +215CY\$  
4 APP 11-02 PTAT +1.4 64% REL CPI +85  
3-03 365D 2X 34130M\* 4.7% 1614F\* 3.4% 1176P\* DHIR

**MT ZION BILLY GILLIAN 003053166 85 @ 3-09**  
11/02 USDA PTA -197M +0.06% +1F -14\$ +1CY\$ 54% REL  
PROT +0.04% 0P -5P\$ 34%ILE P\$  
11/02 USDA PPA -336M -9F -33\$ +3P -12P\$ +3CY\$  
2 REC YD -354M -10F -35\$ +1P -17P\$ -4CY\$  
2 APP 11-02 PTAT +0.7 56% REL CPI +30  
2-04 294D 2X 14470M 4.9% 705F 3.3% 477P DHIR  
3-03 365D 2X 21292M 4.4% 940F 3.3% 707P DHIR

**JIMCO PANSYS BILLY-ET 000601478 (009G0123)**  
11/02 USDA PTA +220M +0.03% +15F +29\$ +69CY\$ 95% REL  
PROT +0.07% +18P +55P\$ 95% REL  
AGA 11-02 PTAT +0.4 95% REL PIT +73

ST SR BD DF RA TW RL FA FU RH RW UC UD TP TL  
26 25 26 38 22 17 20 27 32 35 31 27 32 20 33

**MT ZION JASPER LATOYLA 003038281 91 @ 4-05**  
11/02 USDA PTA -716M +0.18% -5F -59\$ -63CY\$ 59% REL  
PROT +0.03% -19P -64P\$ 08%ILE P\$  
11/02 USDA PPA -1786M +31F -112\$ -32P -95P\$ -73CY\$  
3 REC YD -1724M +15F -120\$ -41P -123P\$ -115CY\$  
4 APP 11-02 PTAT +0.5 63% REL CPI -28  
2-00 293D 2X 12760M 5.7% 727F 3.5% 452P DHIR  
2-11 341D 2X 14460M 5.8% 836F 3.8% 544P DHIR

**THIRD DAM: MT ZION SONNY LACEY 84 @ 4-06**

**LOT# 12 \$ \_\_\_\_\_****JARIS HILLS PATTON NANCI-TWIN****003079196**

BORN: 12-03-02 TATTOO LE J69H  
 BREEDER & OWNER: BOLLECH JAMES & DORIS  
 1318 SCHWEIZER RD  
 ATHENS WI 54411  
 715-257-7641

SELLING OPEN

PA: +860M -.06% +29F +89\$ -.04% +22P +92P\$ +89CY\$  
 PTAT +1.1  
 ST SR DF BD FA RL RA TW  
 +1.6 0.0 +1.4 -0.2 L0.3 P0.5 L1.8 +0.3  
 FU RW RH TP TL UC UD  
 -0.2 +1.4 +1.5 C1.7 -1.5 +0.5 S0.2

**NELLS GLOW ENHANCER PATTON 000603094 (001G0404)**  
 11/02 USDA PTA +1089M -0.06% +38F +114\$ +108CY\$ 72% REL  
 PROT -.06% +25P +114P\$ 73% REL  
 AGA 11-02 PTAT +1.5 74% REL PTI +154  
 ST SR DF BD FA RL RA TW  
 +1.6 +0.9 +1.9 +1.3 L0.3 S0.2 L1.0 +0.6  
 FU RW RH TP TL UC UD  
 0.0 +1.4 +1.6 C2.2 -1.9 +0.9 D0.5

**SCHULZLANDS AL NIKIANN 003066306 84 @ 2-09**  
 11/02 USDA PTA +631M -0.06% +19F +64\$ +71CY\$ 32% REL  
 PROT -.01% +18P +71P\$ 72% ILE P\$  
 11/02 USDA PPA +1014M +27F +99\$ +29P +111P\$ +112CY\$  
 1 REC YD +691M +13F +63\$ +18P +68P\$ +66CY\$  
 1 APP 11-02 PTAT +0.7 36% REL CPI +97  
 2-05 305D 2X 11730M 4.4% 515F 3.2% 379P DHIR

ST SR BD DF RA TW RL FA FU RH RW UC UD TP TL  
 37 16 11 34 36 19 09 21 36 40 30 33 42 38 18

**LOT# 13 \$ \_\_\_\_\_****ROLLANDIA MAYPENNANT D DAY****003076818**

BORN: 06-06-02 TATTOO RE 380 TATTOO LE 380  
 BREEDER & OWNER: SWYERS HARRY & MARGARET & FAMILY  
 ROLLANDIA GUERNSEYS  
 995 85TH AVE  
 AMERY WI 54001  
 715-268-2405

SELLING OPEN  
CALFHOOD VACCINATE

PA: +179M +.1% +24F +33\$ +.07% +17P +59P\$ +73CY\$  
 PTAT +0.3  
 ST SR DF BD FA RL RA TW  
 +0.0 +0.1 -0.4 -0.1 L0.1 P0.1 L0.7 -0.1  
 FU RW RH TP TL UC UD  
 0.0 -0.6 -0.4 C0.3 -0.1 +0.3 S0.5

**JENS GOLD HARPOON MAYPENNANT 000604016 (054G0442)**  
 PA: +373M +.12% +35F +57\$ +.07% +23P +86P\$ +100CY\$  
 PTAT +0.8  
 ST SR DF BD FA RL RA TW  
 -0.4 +0.1 +0.5 -0.1 S0.7 P0.1 H0.5 +0.2  
 FU RW RH TP TL UC UD  
 +0.7 +0.6 +1.7 C1.4 +0.4 +0.8 S0.1

**ROLLANDIA JAY GREG DRUCILA 003068765**

2-00 175D 2X 5817M 5.6% 328F 3.7% 214P RIP

**SHERMA VICTORY ELLAS ENHANCER 000600510 (029G0918)**  
 11/02 USDA PTA +1399M -0.05% +53F +150\$ +132CY\$ 97% REL  
 PROT -.01% +29P +144P\$ 97% REL  
 AGA 11-02 PTAT +2.1 97% REL PTI +202

**NELLS GLOW CALEB PAGE 003018312 86 @ 4-10**  
 11/02 USDA PTA +773M -0.04% +27F +81\$ +103CY\$ 65% REL  
 PROT +0.01% +26P +98P\$ 82% ILE P\$  
 11/02 USDA PPA +3088M +94F +312\$ +96P +363P\$ +374CY\$  
 3 REC YD +2493M +82F +257\$ +82P +307P\$ +321CY\$  
 3 APP 11-02 PTAT +0.8 63% REL CPI +131  
 3-05 354D 2X 26080M 4.2% 1102F 3.3% 871P DHIR

**BLACKWATER ENHANCER AL-ET 000603307 (001G0211)**  
 11/02 USDA PTA +1300M -0.06% +48F +138\$ +166CY\$ 77% REL  
 PROT -.01% +41P +161P\$ 77% REL  
 AGA 11-02 PTAT +0.6 64% REL PTI +180

**SCHULZLANDS MAGIC NATALIE-TWIN 003066304**

**WISPRIDE PENDER HARPOON-ET 000600972 (021G0353)**  
 11/02 USDA PTA -48M +0.11% +15F +8\$ +54CY\$ 95% REL  
 PROT +0.09% +13P +37P\$ 95% REL  
 AGA 11-02 PTAT -0.1 94% REL PTI +49

**MAYWOOD ROAD KING PENNY 003033956 90 @ 5-02**  
 11/02 USDA PTA +793M +0.12% +55F +105\$ +147CY\$ 64% REL  
 PROT +0.04% +33P +135P\$ 98% ILE P\$  
 11/02 USDA PPA +1771M +130F +240\$ +81P +321P\$ +358CY\$  
 4 REC YD +1842M +123F +240\$ +77P +310P\$ +340CY\$  
 4 APP 11-02 PTAT +1.7 65% REL CPI +227  
 3-08 305D 2X 17920M 4.8% 863F 3.9% 690P DHIR

**ROZELYN PATMAR JAY GREG 000601830 (029G0936)**  
 11/02 USDA PTA -110M +0.18% +23F +10\$ +70CY\$ 92% REL  
 PROT +0.13% +16P +47P\$ 92% REL  
 AGA 11-02 PTAT -0.2 86% REL PTI +66

**ROLLANDIA PAULS DEARLY BELOVED 003056932 80 @ 3-10**  
 11/02 USDA PTA +82M 0.0% +3F +9\$ +21CY\$ 51% REL  
 PROT +0.02% +6P +17P\$ 40% ILE P\$  
 11/02 USDA PPA +38M -5F -1\$ +8P +13P\$ +21CY\$  
 3 REC YD -322M -21F -42\$ -2P -31P\$ -22CY\$  
 3 APP 11-02 PTAT -0.1 53% REL CPI +14  
 2-00 295D 2X 9950M 5.1% 508F 3.5% 351P DHIR  
 2-11 305D 2X 10535M 4.6% 488F 3.7% 393P DHIR  
 4-00 190D 2X 9655M 4.5% 433F 3.3% 214P RIP  
 12073M 551F 404P PROJ ACT

**THIRD DAM: ROLLANDIA STAR WARS RTWO DTWO 81 @ 3-06**

**LOT# 14 \$ \_\_\_\_\_**

**SUNNY BROOK LORRY SHEILA**

**003079220**

BORN: 07-16-02 TATTOO LE C27  
BREEDER & OWNER: SUNNY BROOK GUERNSEY  
CAROLYN CHRISTOPHER  
N5996 CO RD DE  
BANGOR WI 54614  
608-486-4279

SELLING OPEN  
CALFHOOD VACCINATE

**OAKLANDS MERCURY 000597376 (003G0184)**  
11/02 USDA PTA +438M +0.08% +32F +59\$ +79CY\$ 97% REL  
PROT +0.01% +17P +73P\$ 97% REL  
AGA 11-02 PTAT -0.8 97% REL PTI +66

**TROTACRE MERCURY LORRY-ET 000602120 (014G0258)**  
11/02 USDA PTA +1280M -0.03% +51F +139\$ +127CY\$ 96% REL  
PROT -0.09% +28P +136P\$ 96% REL  
AGA 11-02 PTAT +0.8 96% REL PTI +162  
ST SR DF BD FA RL RA TW  
-0.6 +3.1 +0.7 +3.8 S0.1 S0.2 H0.6 +2.6  
FU RW RH TP TL UC UD  
-0.3 +0.8 +0.9 W0.1 +0.5 +1.3 D1.7

**TROTACRE FAYETTE LORETTA 002938801 92 @ 4-09**  
11/02 USDA PTA +1512M -0.19% +35F +144\$ +143CY\$ 87% REL  
PROT -0.07% +37P +149P\$ 95%ILE P\$  
4 REC YD +4145M +93F +393\$ +105P +413P\$ +400CY\$  
2 APP 11-02 PTAT +2.3 79% REL CPI +229  
5-07 365D 2X 32710M\* 4.0% 1318F\* 3.3% 1067P\* DHIR

**GLENVILLE VICTOR SHARON 003068024**  
2-03 345D 2X 12542M 5.4% 679F 3.6% 446P

**SPRING WALK STREAKS VICTOR 000601990**  
11/02 USDA PTA +733M 0.0% +32F +82\$ +88CY\$ 85% REL  
PROT -0.03% +20P +88P\$ 85% REL  
AGA 11-02 PTAT +0.3 55% REL PTI +102

**THIRDDAM: GLENVILLE BAKERS SHARON 33Z GP-80 (CAN)**

**GLENVILLE SERGIOS SHARON 040198589 EX-9 (CAN)**  
2-03 305D 2X 11535M 4.8% 550F 3.6% 420P CAN  
3-04 305D 2X 12302M 5.0% 618F 3.8% 473P CAN  
4-03 305D 2X 10811M 4.8% 515F 3.8% 416P CAN  
5-05 305D 2X 14012M 4.8% 673F 3.6% 504P CAN

**LOT# 15 \$ \_\_\_\_\_**

**ROCKING K JAG RANDI**

**003079166**

BORN: 11-10-02 TATTOO LE 95  
BREEDER & OWNER: KOELLER DANNY R  
6724 REYNOLDS RIDGE RD  
POTOSI WI 53820  
608-723-7388

SELLING OPEN

PA: -73M +1.2% +15F +6\$ +0.2% -1P +9P\$ +10CY\$  
PTAT -0.5  
ST SR DF BD FA RL RA TW  
-1.1 -1.1 -1.3 -1.2 L0.1 P0.1 H0.5 -1.2  
FU RW RH TP TL UC UD  
+1.2 -1.4 -0.8 C1.6 -1.3 -0.6 S1.6

**LILY LANE PENNY PERFECTO-ET 000598133 (021G0296)**  
11/02 USDA PTA +269M -0.09% -2F +19\$ +30CY\$ 99% REL  
PROT +0.01% +10P +27P\$ 99% REL  
AGA 11-02 PTAT +1.5 99% REL PTI +58

**DONNYBROOK PERFECT JAG 000604335**  
PA: +426M +0.01% +21F +49\$ -0.01% +12P +54P\$ +54CY\$  
PTAT +0.3  
ST SR DF BD FA RL RA TW  
+0.7 +0.2 +0.2 +0.5 S0.8 P0.4 L0.7 -0.5  
FU RW RH TP TL UC UD  
+0.1 0.0 -0.7 C0.3 +0.5 +0.6 S0.4

**DONNYBROOK VOL JEM 003016710 82 @ 5-06**  
11/02 USDA PTA +583M +0.11% +43F +79\$ +78CY\$ 66% REL  
PROT -0.03% +14P +80P\$ 90%ILE P\$  
11/02 USDA PPA +2992M +143F +344\$ +70P +347P\$ +331CY\$  
5 REC YD +2115M +111F +251\$ +49P +252P\$ +240CY\$  
3 APP 11-02 PTAT -0.9 64% REL CPI +62  
5-02 318D 2X 21980M 4.1% 901F 3.2% 705P DHIR

**DONNYBROOK G RODMAN 003047995 72 @ 2-03**  
11/02 USDA PTA -571M +0.23% +9F -37\$ -33CY\$ 54% REL  
PROT +0.04% -13P -37P\$ 41%ILE P\$  
11/02 USDA PPA -2657M -24F -223\$ -61P -224P\$ -208CY\$  
2 REC YD -3197M -82F -311\$ -79P -323P\$ -310CY\$  
1 APP 11-02 PTAT -1.2 51% REL CPI -62  
2-02 213D 2X 8320M 4.5% 377F 3.5% 295P DHIR

**ROZELYN PAT MAR P GOLIATH-ET 000600974 (007G0302)**  
11/02 USDA PTA +219M +0.21% +43F +51\$ +72CY\$ 99% REL  
PROT +0.03% +12P +65P\$ 99% REL  
AGA 11-02 PTAT -0.1 99% REL PTI +91

ST SR BD DF RA TW RL FA FU RH RW UC UD TP TL  
15 7 9 19 17 20 21 22 41 11 5 16 44 41 4

**GR-DONNYBROOK PK RAVIN 003016630 83 @ 5-05**  
11/02 USDA PTA -691M +0.24% +5F -49\$ -58CY\$ 68% REL  
PROT +0.02% -20P -57P\$ 10%ILE P\$  
11/02 USDA PPA -1413M +44F -73\$ -38P -85P\$ -83CY\$  
5 REC YD -1200M +34F -65\$ -35P -80P\$ -82CY\$  
3 APP 11-02 PTAT -1.1 62% REL CPI -80  
2-10 329D 2X 13230M 5.1% 673F 3.3% 436P DHIR  
3-10 285D 2X 13260M 5.2% 694F 3.7% 486P DHIR  
4-09 305D 2X 17630M 5.0% 874F 3.4% 600P DHIR  
6-00 304D 2X 16370M 4.7% 774F 3.4% 555P DHIR  
7-00 305D 2X 19290M 4.7% 912F 3.4% 657P

**DONNYBROOK J ROXIE 85 @ 2-10**  
2-02 245D 2X 16381M 4.3% 707F 2.9% 481P RIP  
305D 19420M 861F 600P PROJ ACT

**LOT# 16 \$ \_\_\_\_\_**

**RIDGEROLL VALIANT MAUDE**

**003078087**

BORN: 04-04-02 TATTOO LE R977  
BREEDER & OWNER: VERGIN JEROME  
RIDGEROLL FARM  
1570 ECKERT AVE SE  
BUFFALO MN 55313  
763-498-8012

PA: +581M +.03% +30F +69\$ -.03% +15P +72P\$ +70CY\$  
PTAT -0.1  
ST SR DF BD FA RL RA TW  
+0.4 +0.3 +0.4 +0.4 S0.1 S0.8 H0.5 -0.3  
FU RW RH TP TL UC UD  
+0.0 -0.3 -0.4 C0.3 -1.5 -0.5 D0.2

**TAMARACKS PERFECTOS VALIANT-ET 000602300 (009G0134)**

11/02 USDA PTA +279M +0.02% +15F +33\$ +34CY\$ 89% REL  
PROT -0.02% +7P +35P\$ 89% REL  
AGA 11-02 PTAT +2.2 87% REL PTI +97  
ST SR DF BD FA RL RA TW  
+3.0 +1.1 +2.3 +1.5 S0.8 S0.4 L0.9 +1.2  
FU RW RH TP TL UC UD  
+0.2 +1.6 +1.2 C0.4 +0.1 +1.9 S1.0

**RIDGEROLL TRUMPETS MANDY 003078086**

1-11 275D 2X 10444M 4.2% 438F 3.1% 324P DHI

SELLING OPEN

**LILY LANE PENNY PERFECTO-ET 000598133 (021G0296)**

11/02 USDA PTA +269M -0.09% -2F +19\$ +30CY\$ 99% REL  
PROT +0.01% +10P +27P\$ 99% REL  
AGA 11-02 PTAT +1.5 99% REL PTI +58

**PIERCE FARMS A VALERIE 002958191 92 @ 3-11**

11/02 USDA PTA +578M -0.04% +19F +60\$ +55CY\$ 78% REL  
PROT -0.04% +13P +59P\$ 22%ILE P\$  
11/02 USDA PPA +1934M +86F +217\$ +61P +251P\$ +259CY\$  
3 REC YD +2148M +91F +238\$ +67P +273P\$ +282CY\$  
3 APP 11-02 PTAT +2.0 72% REL CPI +139  
3-07 365D 2X 28560M\* 4.9% 1409F\* 3.7% 1052P\* DHIR

**SPRING WALK KARIS TRUMPET 000601647 (001G0368)**

11/02 USDA PTA +1781M -0.16% +51F +178\$ +164CY\$ 96% REL  
PROT -0.11% +40P +176P\$ 97% REL  
AGA 11-02 PTAT 0.0 97% REL PTI +167

**RIDGEROLL HENRYS MABELENE 003078085**

PA: +107M -.13% -16F -5\$ -.06% -5P -19P\$ -29CY\$  
PTAT -0.1

**THIRD DAM: RIDGEROLL KINGS MABLE 80 @ 4-06**

4-02 316D 2X 15990M 4.6% 741F 3.2% 516P DHIR

**FOURTH DAM: RIDGEROLL LESTERS MARGE 80 @ 6-02**

5-08 365D 2X 20430M 3.6% 731F 3.5% 706P DHIR

**FIFTH DAM: RIDGEROLL RONS MAY 81 @ 3-01**

**LOT# 17 \$ \_\_\_\_\_**

**BLUFF VIEW POKER DURANGO**

**003079214**

BORN: 12-03-02 TATTOO LE BV02  
BREEDER & OWNER: SCHILL KEVIN  
7997 A BLUFF DR  
ARPIN WI 54410  
715-752-3263

PA: +628M -.04% +21F +65\$ -.02% +18P +73P\$ +74CY\$  
PTAT +0.8  
ST SR DF BD FA RL RA TW  
+1.3 +0.2 +1.4 -0.2 L0.0 P0.0 L0.7 +0.5  
FU RW RH TP TL UC UD  
-0.6 +1.1 +1.1 W0.6 -0.4 +0.5 D0.2

**MYOWN MAGIC POKER 000602889 (001G0400)**

11/02 USDA PTA +1367M -0.04% +54F +148\$ +174CY\$ 89% REL  
PROT -0.02% +42P +170P\$ 89% REL  
AGA 11-02 PTAT +1.1 87% REL PTI +205  
ST SR DF BD FA RL RA TW  
+2.7 +0.5 +2.8 -0.4 L0.1 S0.2 L1.5 +1.2  
FU RW RH TP TL UC UD  
-1.4 +2.0 +2.2 W1.5 -0.5 +0.6 D0.9

**CLOVER NOOK FAYETTE DELTA 003056327**

PA: -112M -.04% -11F -18\$ -.01% -5P -23P\$ -26CY\$  
PTAT +0.6  
ST SR DF BD FA RL RA TW  
-0.1 -0.1 +0.1 +0.1 S0.1 P0.3 H0.2 -0.3  
FU RW RH TP TL UC UD  
+0.2 +0.3 -0.1 C0.3 -0.3 +0.4 S0.5

SELLING OPEN

**NELLS GLOW ADMIRAL MAGIC 000598858 (021G0305)**

11/02 USDA PTA +1103M -0.08% +35F +113\$ +118CY\$ 99% REL  
PROT -0.04% +29P +120P\$ 99% REL  
AGA 11-02 PTAT +0.8 99% REL PTI +139

**MYOWN ENHANCER POLKA 003000603 87 @ 5-10**

11/02 USDA PTA +1077M -0.05% +40F +115\$ +122CY\$ 68% REL  
PROT -0.04% +29P +123P\$ 88%ILE P\$  
11/02 USDA PPA +3344M +103F +339\$ +94P +374P\$ +375CY\$  
3 REC YD +2785M +92F +287\$ +77P +314P\$ +313CY\$  
3 APP 11-02 PTAT +1.3 65% REL CPI +179  
2-01 365D 2X 23910M 4.2% 1009F 3.4% 820P DHIR

**EDBLOMS FAYETTE TARZAN 000603077**

PA: -382M -.02% -20F -45\$ -.01% -15P -57P\$ -62CY\$  
PTAT +0.5

**CLOVER NOOK WAYLON DELLA 003044463**

PA: +159M -.06% -3F +10\$ -.01% +4P +11P\$ +10CY\$  
PTAT +0.7

**THIRD DAM: LAESCHLAND BIONIC DELICIOUS 85 @ 5-01**

4-01 364D 2X 20920M 4.3% 907F 3.6% 748P DHIR

**FOURTH DAM: LAESCHLAND LAD DIANE 81 @ 3-04**

2-03 365D 2X 20300M 3.8% 779F 3.5% 701P DHIR

**LOT# 18 \$** \_\_\_\_\_

**LARALAND LARRY REBECCA**

**003079167**

BORN: 12-03-02 TATTOO LE L39  
BREEDER & OWNER: LARA FARMS  
KRIS LARA  
10914 KATZENBERGER RD  
MT CARROLL IL 61053  
815-244-4318

SELLING OPEN

**ACE R JACK BE NIMBLE 000603695**  
11/02 USDA PTA -1189M -0.11% -68F -146\$ -205CY\$ 44% REL  
PROT -0.06% -48P -187P\$ 44% REL  
AGA 11-02 PTAT -0.3 37% REL PTI -219

**LYRIC LANE GLACIERS N LARRY 000604589**  
PA: -875M -.06% -47F -105\$ -.05% -36P -137P\$ -150CY\$  
PTAT -0.8  
ST SR DF BD FA RL RA TW  
-0.5 +0.3 -1.5 -0.2 S0.1 P0.9 H0.6 +0.5  
FU RW RH TP TL UC UD  
+0.5 -0.9 -0.5 W0.1 +1.4 -0.1 S0.3

**LYRIC LANE GLACES F GLACIER 003027723 84 @ 5-07**  
11/02 USDA PTA -560M -0.01% -26F -64\$ -96CY\$ 60% REL  
PROT -0.04% -24P -86P\$ 03%ILE P\$  
5 REC YD -953M -38F -104\$ -43P -146P\$ -165CY\$  
4 APP 11-02 PTAT -1.2 63% REL CPI -142  
4-06 305D 2X 12360M 4.7% 576F 3.6% 448P DHIR

**GR-LARALAND GREG REBA 003069685**

**ROZELYN PATMAR JAY GREG 000601830 (029G0936)**  
11/02 USDA PTA -110M +0.18% +23F +10\$ +70CY\$ 92% REL  
PROT +0.13% +16P +47P\$ 92% REL  
AGA 11-02 PTAT -0.2 86% REL PTI +66

**PR-LARALAND CALEB SWEETPEA 376010448**

**LOT# 19 \$** \_\_\_\_\_

**MUDBRANCH LORAL OLIVIA-TWIN**

**003079255**

BORN: 09-21-02 TATTOO LE MD95  
BREEDER & OWNER: FLANNERY GREG T  
13657 HWY 78 SOUTH  
ARGYLE WI 53504  
608-543-3117

SELLING OPEN  
CALFHOOD VACCINATE

PA: +493M -.05% +14F +49\$ -.01% +15P +55P\$ +56CY\$  
PTAT +0.9  
ST SR DF BD FA RL RA TW  
+1.5 +1.7 +0.6 +1.9 S0.3 P0.1 L0.2 +1.5  
FU RW RH TP TL UC UD  
+1.0 +0.7 +0.7 C0.4 +0.5 +0.1 D0.1

**OAKLANDS MERCURY 000597376 (003G0184)**  
11/02 USDA PTA +438M +0.08% +32F +59\$ +79CY\$ 97% REL  
PROT +0.01% +17P +73P\$ 97% REL  
AGA 11-02 PTAT -0.8 97% REL PTI +66

**TROTACRE MERCURY LORAL-ET 000602121 (007G0322)**  
11/02 USDA PTA +354M -0.05% +7F +33\$ +34CY\$ 95% REL  
PROT -0.01% +9P +35P\$ 95% REL  
AGA 11-02 PTAT +1.8 94% REL PTI +78  
ST SR DF BD FA RL RA TW  
+2.9 +3.3 +1.2 +3.7 S0.6 P0.2 L0.4 +3.0  
FU RW RH TP TL UC UD  
+1.9 +1.3 +1.3 C0.8 +0.9 +0.1 D0.1

**TROTACRE FAYETTE LORETTA 002938801 92 @ 4-09**  
11/02 USDA PTA +1512M -0.19% +35F +144\$ +143CY\$ 87% REL  
PROT -0.07% +37P +149P\$ 95%ILE P\$  
4 REC YD +4145M +93F +393\$ +105P +413P\$ +400CY\$  
2 APP 11-02 PTAT +2.3 79% REL CPI +229  
5-07 365D 2X 32710M\* 4.0% 1318F\* 3.3% 1067P\* DHIR

**MUDBRANCH HIGH HOPES IN ORCHID 003054167**  
11/02 USDA PTA +631M -0.05% +20F +64\$ +78CY\$ 43% REL  
PROT 0.0% +20P +76P\$ 72%ILE P\$  
11/02 USDA PPA +1717M +61F +181\$ +50P +202P\$ +204CY\$  
3 REC YD +1659M +52F +169\$ +53P +199P\$ +207CY\$  
4-01 283D 2X 13760M 4.6% 628F 3.4% 464P DHI

**ROLLING VIEW ACRES FOR MARK-ET 000602837**  
PA: +591M -.13% +6F +50\$ -.08% +8P +39P\$ +29CY\$  
PTAT +0.4

**CREAMERY HILL JAY OPRAH 003039411**  
11/02 USDA PTA +401M +0.06% +27F +52\$ +104CY\$ 44% REL  
PROT +0.08% +26P +86P\$ 75%ILE P\$

**THIRD DAM: JIMCO ORANATORS ORCHID 80 @ 3-05**  
3-00 291D 2X 15460M 4.1% 638F 3.5% 537P DHIR  
**FOURTH DAM: JIMCO VICTORYS VICKIE 86 @ -300**  
**FIFTH DAM: JIMCO U PLAYBOYS PEACH 84 @ 3-08**  
3-05 356D 2X 18010M 4.6% 833F 3.7% 668P DHIR  
**SIXTH DAM: JIMCO ADMIRALS ANDREA 87 @ 5-03**  
6-02 365D 2X 21700M 5.0% 1077F 3.5% 769P DHIR  
**SEVENTH DAM: JIMCO CHRISTMAS COLEEN 82 @ 4-07**  
6-09 305D 2X 19880M 3.8% 755F 3.1% 610P DHIR

**LOT# 20 \$ \_\_\_\_\_**

**OMALLEY POKER ELIZA**

**003079168**

BORN: 11-15-02 TATTOO LE 0115  
BREEDER & OWNER: O MALLEY COLBY N  
N3842 GAY DR  
GILMAN WI 54433  
715-447-8535

SELLING OPEN

PA: +646M -.01% +27F +71\$ -.02% +18P +77P\$ +77CY\$  
PTAT +0.3  
ST SR DF BD FA RL RA TW  
+0.7 -0.2 +1.2 -0.5 L0.4 S0.5 L0.2 +0.1  
FU RW RH TP TL UC UD  
-0.7 +0.2 +0.7 W0.6 +0.0 +0.3 D0.6

**MYOWN MAGIC POKER 000602889 (001G0400)**  
11/02 USDA PTA +1367M -0.04% +54F +148\$ +174CY\$ 89% REL  
PROT -.02% +42P +170P\$ 89% REL  
AGA 11-02 PTAT +1.1 87% REL PTI +205  
ST SR DF BD FA RL RA TW  
+2.7 +0.5 +2.8 -0.4 L0.1 S0.2 L1.5 +1.2  
FU RW RH TP TL UC UD  
-1.4 +2.0 +2.2 W1.5 -0.5 +0.6 D0.9

**OMALLEY FILMOR ELIZABETH 003043515 71 @ 4-03**  
3-05 346D 2X 18049M 4.0% 719F 3.2% 578P  
ST SR BD DF RA TW RL FA FU RH RW UC UD TP TL  
13 16 20 21 11 20 40 16 34 28 26 19 30 32 24

**NELLS GLOW ADMIRAL MAGIC 000598858 (021G0305)**  
11/02 USDA PTA +1103M -0.08% +35F +113\$ +118CY\$ 99% REL  
PROT -.04% +29P +120P\$ 99% REL  
AGA 11-02 PTAT +0.8 99% REL PTI +139

**MYOWN ENHANCER POLKA 003000603 87 @ 5-10**  
11/02 USDA PTA +1077M -0.05% +40F +115\$ +122CY\$ 68% REL  
PROT -.04% +29P +123P\$ 88%ILE P\$  
11/02 USDA PPA +3344M +103F +339\$ +94P +374P\$ +375CY\$  
3 REC YD +2785M +92F +287\$ +77P +314P\$ +313CY\$  
3 APP 11-02 PTAT +1.3 65% REL CPI +179  
2-01 365D 2X 23910M 4.2% 1009F 3.4% 820P DHIR

**SHENMONT AGNI FILMOR-ET 000599501 (029G0901)**  
11/02 USDA PTA +395M -0.01% +16F +43\$ +41CY\$ 94% REL  
PROT -.02% +9P +43P\$ 94% REL  
AGA 11-02 PTAT -0.1 92% REL PTI +42

**SEEGERHILL FRITZ ELLY 003033399 81 @ 5-03**  
11/02 USDA PTA -544M +0.06% -16F -55\$ -82CY\$ 44% REL  
PROT -.03% -22P -74P\$ 05%ILE P\$  
1 APP 11-02 PTAT -1.0 49% REL CPI -113

OMALLEY FANCY ELLAMAE PTA -12\$ 82 @ 4-06  
OMALLEY FANCY EMMAMAE PTA -36\$ 76 @ 2-02

**THIRD DAM: SEEGERHILL JETSTREAMELEANOR**  
4-07 305D 2X 15630M 4.7% 730F 3.5% 544P DHI

**LOT# 21 \$ \_\_\_\_\_**

**SUNNY BROOK ROGER JOSIE-TWIN**

**003079221**

BORN: 07-23-02 TATTOO LE C28  
BREEDER & OWNER: SUNNY BROOK GUERNSEY  
CAROLYN CHRISTOPHER  
N5996 CO RD DE  
BANGOR WI 54614  
608-486-4279

SELLING OPEN  
CALFHOOD VACCINATE

PA: +66M +.02% +5F +9\$ +.01% +3P +11P\$ +12CY\$  
PTAT +0.6  
ST SR DF BD FA RL RA TW  
+1.9 +0.7 +1.0 +0.5 S0.3 0.0 H0.3 +0.8  
FU RW RH TP TL UC UD  
+0.2 +0.9 +1.0 W0.4 +0.7 +0.6 S0.1

**BIG SPRING ROGER 040020213**  
11/02 USDA PTA +172M -0.02% +4F +16\$ +3CY\$ 86% REL  
PROT -.03% 0P +9P\$ 83% REL  
AGA 08-02 PTAT +1.2 50% REL PTI +46  
ST SR DF BD FA RL RA TW  
+3.7 +1.3 +2.0 +1.0 S0.6 0.0 H0.6 +1.5  
FU RW RH TP TL UC UD  
+0.3 +1.8 +1.9 W0.7 +1.4 +1.1 S0.1

**RAINBOW ACRES SHARP JOAN 003053786**  
11/02 USDA PTA -41M +0.05% +6F +2\$ +21CY\$ 49% REL  
PROT +0.04% +5P +14P\$ 41%ILE P\$  
11/02 USDA PPA +171M +37F +43\$ +30P +95P\$ +125CY\$  
2 REC YD +175M +38F +44\$ +31P +98P\$ +129CY\$  
2-05 305D 2X 12160M 5.0% 606F 3.5% 426P  
3-06 296D 2X 15210M 4.7% 714F 3.6% 550P

**WILLOWS ADMIRAL JASPER 000598587 (009G0109)**  
11/02 USDA PTA -85M +0.06% +5F -3\$ +1CY\$ 97% REL  
PROT +0.01% -1P -1P\$ 97% REL  
AGA 11-02 PTAT +0.9 96% REL PTI +30

**BIG SPRING VICTORY ROSE 040194553**

**TAG LANE IDEAL SHARP-ET 000601474 (001G0201)**  
11/02 USDA PTA +583M -0.04% +20F +61\$ +59CY\$ 96% REL  
PROT -.03% +14P +62P\$ 96% REL  
AGA 11-02 PTAT +2.1 97% REL PTI +117

**RAINBOW ACRES AGATE JOSIE 002993029 87 @ 9-03**  
11/02 USDA PTA -811M +0.08% -24F -81\$ -65CY\$ 38% REL  
PROT +0.08% -15P -74P\$ 08%ILE P\$  
1 APP 11-02 PTAT -1.6 38% REL CPI -135  
3-04 229D 2X 9150M 3.7% 340F 3.7% 338P DHIA  
4-04 269D 2X 10610M 4.3% 451F 3.7% 396P DHIA  
5-05 247D 2X 11090M 4.8% 534F 3.8% 421P DHIA  
6-05 222D 2X 10440M 4.1% 428F 3.6% 378P DHIA  
7-04 305D 2X 14050M 4.0% 562F 3.6% 512P DHIR  
8-05 252D 2X 10700M 4.4% 469F 3.6% 385P DHIA

RAINBOW ACRES FELIX JOYCE 78 @ 4-08

**THIRD DAM: RAINBOW ACRES FAYETTE JULIE 88 @ 7-08**