

# SO MY GUERNSEY LOST HER EARTAG...

## WHAT SHOULD I DO NEXT?

### LOST RFID TAGS

Unfortunately, we cannot replace the RFID tag with the same number. AGA recommends you replace the tag with an extra RFID you have on hand. If you have a set sequence for your calves, consider ordering a separate set for replacement purposes.

Whether or not your animal's RFID was their registration number, we recommend you update the AGA with the new number. **We will not change your animal's registration number**, so do not update your milk testing records!

### LOST HERD/CUSTOM ID TAGS

Replacement tags can be ordered with the American Guernsey Association. Keep in mind that your tag may take up to a month to arrive. This is why AGA recommends having backup ID in the event an animal loses their tag right before an exhibition or sale. Backup ID can include sketches, photos, and/or tattoos. **Keep in mind the RFID tag alone is not adequate ID for registration.**

### RFID ON HEALTH PAPERS

Exhibitions and sales that require RFID for entry require you to list the current RFID tag in the animal's ear on the health paper, even if that is a replacement tag and does not match her registration number. Use the previous registration number as an alternate ID. **Your new RFID does not have to be on the registration paper for entry to these events**, but the AGA is happy to send an updated copy for a \$10 duplicate fee.

### MILK/HERD DATA RECORDING

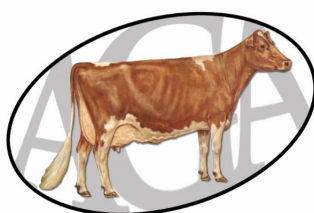
In order for your animal's production and performance data to be obtained by the AGA, her identification number on your milk testing or other herd recording programs must match her official registration number. If your animal has an RFID or metal tag that is not her registration number, do not use it on your herd records! We understand this is a frequent frustration of lost tags, which is why many breeders have opted not to use RFID for registration papers, but only recorded separately. If this interests you, contact the AGA to set this up.

### HOW TO AVOID LOST TAG PROBLEMS

We all know cows are mischievous creatures, and lost tags are an inevitability. However, there are many steps you can take to avoid these problems in the future.

1. Tag your animal in the first third of the ear from the head.
2. Ensure the thick part of the RFID is on the inside of the ear.
3. When tagging, ensure the tag is fully inserted into the back, and is not loose.
4. Once the animal is registered, do not make any changes to her registration ID on your herd management program(s).
5. Consider using backup forms of ID, such as sketches, photos, or tattoos.

## AMERICAN GUERNSEY ASSOCIATION



[www.usguernsey.com](http://www.usguernsey.com)